



Welcome to the Mesa County Fairgrounds!

It is our intention to make every visitor to the Fairgrounds feel welcome and to provide the best possible service to you and those in attendance at your event. The Mesa County Fairgrounds is a family-oriented special event complex established in 1944. Annually, the facility hosts a wide variety of commercial, business, youth, and private events. It is the home campus for the Mesa County 4-H Youth Program and plays host to the annual Mesa County Fair held each July.

This Event Holder's Guide covers the operating policies and procedures of this facility and is organized in an A-to-Z format. Inside you will find information on our property, pricing, policies, and available services. Many activities may have special circumstances not covered in this guide. These should be discussed with the Fairgrounds office for any special provisions and regulations that may apply. Please contact us if you have additional questions that are not covered in this guide. All policies and procedures are subject to change.

We look forward to serving you in 2008.

Marsha Kosteva
Fairgrounds Manager

❖ CONTACT INFORMATION

Staff: *Marsha Kosteva, Fairgrounds Manager*
Janet Renzelman, Administrative Assistant/Event Coordinator
Carina Meridith, Mesa County Fair Coordinator
Roger Finkel, Maintenance Crew Manager
Dale Silzell, Maintenance Technician

Phone/Fax: *Main Number: (970) 255-7107 or (970) 256-1531*
Fax Number: (970) 256-1533
Event Hot Line: (970) 255-7100

Address: *2785 U.S. Highway 50 —Grand Junction, Colorado 81503*

Email: *For bookings: Janet.Renzelman@mesacounty.us*
General information: fairgrounds@mesacounty.us

Website: *www.mesacounty.us/fairgrounds*

Office Hours: *Monday through Friday 8:00 am –5:00 pm*
Closed for lunch from noon to 1:00 pm except by special arrangement
Closed weekends and holidays (open during some events)

We encourage visitors to call ahead for an appointment.

TABLE OF CONTENTS

	PAGE
Welcome	1
Contact Information	1
TABLE OF CONTENTS	2-3
AREAS OF THE FAIRGROUNDS & DESCRIPTIONS	4
Building/Arena/Parking Specifications	5
Layout – Map of local area	6
SCHEDULING PROCESS (How to Book an Event)	7
GENERAL USE POLICIES	7
Access During Events	7
Accidents and Injuries	8
Additional Services	8
Advertising and Announcements	8
Alcohol/Illegal Substances	9
Camping on Mesa County Fairgrounds	9
Cancellation of an Event or Activity	9
Cleaning the Facilities	10
Compliance with all Laws	10
Damage Deposits & Costs	10
Decorations	10
Display Advertising	11
Dogs	11
Donations to the Mesa County Fairgrounds	11
Emergency Medical Personnel	11
EMT Requirement Guidelines	11
EQUESTRIAN AREA & GUIDELINES	12-13
• Activities	12
• Arena Permits	12
• Riding Only	12
• Scheduling	12
• Tie-ups	12
• Stallions	12
• Wash Racks	12
• Stalls	12
• Dogs	12
• Grass Lawn Area	12
• Arena Grooming	12
• Arena Hardpan	12
• Round Pens	12
• Helmet Policy	12
• Horse Right-of-Way	13
• Manure and Trash	13
• Equestrian Professional Endorsement	13
• Care and Cleaning (Equestrian)	13
• Equine and Llama Law	13

Equipment Use on Mesa County Fairgrounds	13
Event Operating Hours	14
Event Setup	14
Facility Alterations	14
Facility Lighting (Including all facilities)	14
Fee Categories	15
Fee Payment Schedule and Deadlines	14
Fee Waiver/Reduction Requests / Special User Groups	16
Fire Regulations	16
Food & Beverages	16
Glass Containers	16
Governing Law	16
Insurance and Liability Requirements	17-18
Indemnification	18
Law Enforcement	18
Licenses, Taxes, Fees, and Permits	18
Mission Statement	18
Names of the Fairgrounds	19
Noise Ordinance	19
Non-discrimination	19
Nonexclusive Licenses	19
Obstruction of Facilities or Grounds	19
Occupancy Limits	19
Parking on the Fairgrounds	19
Photos	20
Promotion of Events	20
Raffles, Collections, etc.	20
Restroom (Portable) Requirements	20
Rights of first Refusal	20
Security Officers	21
Security Requirements	21
Separation of Events	21
Set Ups (Standard)	22
Sharing of Facilities and Services	22
Smoking	23
Stalls Use & Rental	23
Storage – Responsibility	23
Speed	23
Taxes	23
Ticketed Events	23
Traffic Control	23
Use Restrictions	24
Vendors	24
Weapons, Firearms and Fireworks	24
<hr/>	
APPENDIX A	
Mesa County Policy on Helmets	25
APPENDIX B	
Incidental Expenses and Rates	26-27
APPENDIX C	
Rate Schedule for Mesa County Fairgrounds	28



PROPERTY/BUILDING DESCRIPTIONS

The Mesa County Fairgrounds is divided into four areas for event purposes and throughout this booklet is referred to as MCFG. Two areas not listed below are our baseball fields which, at this time, are reserved for the Orchard Mesa Little League, and the other undeveloped areas to the west of the main entrance.

❖ Exposition Park & Building Rental Area – This area includes the Community Building, the



Jockey Club Building, the Exposition Park, and the adjacent parking lots. The buildings may be rented for meetings, weddings, trainings, trade shows, merchandise sales, and educational seminars. The two buildings have heating and air-conditioning and are available for year-round use. The Community Building has been recently renovated and features new restrooms, a warming kitchen, and a bridal dressing room.



The Exposition Park measures 1.8 acres and can be used for festivals, weddings and other events. It features a metal-roofed 40' hexagonal gazebo on a concrete pad near the Community Building. The gazebo is available for rent separately as a picnic shelter or wedding ceremony site and has electricity. The Park is illuminated at night along the east edge and power is available at the base of each light pole.

❖ Equestrian Area – This area includes the Covered Arena, the Livestock Pavilion, the Warm-Up Arena, and our barns/stall area. The Arenas and Pavilion are primarily used for local and regional equestrian shows, animal auctions, and 4-H activities. The Pavilion is a roofed red-iron structure and can be used for swap meets and outdoor exhibitions. The Covered Arena is also available for open riding by local residents. There are ten RV/camper hook ups located in this area.



❖ Grandstand Complex – This area hosts the main ticketed spectator events such as Super cross racing, monster truck shows, concerts, and rodeos. This area consists of the Grandstand seating area, the Grandstand Lobby (concessions and restrooms), the Grandstands Arena, the Practice Arena, and an adjacent staging area for animal pens, participant parking, or equipment parking, plus use of the Main Parking Lot for spectators. The arenas are also available for rent for equestrian activities.



❖ Park Complex – The Park Complex consists of two parks and is situated at the west end of the property. The larger of the two parks is Intermountain Veteran's Memorial Park and the smaller is Lions Park. Together they encompass approximately seven acres. This area hosts many outdoor festivals and shows, dog agility shows, and outdoor concerts. It is available for family reunions and church picnics. The two parks are available for rental together or separately. Lions Park has a large outdoor barbeque area, a playground, and restroom facilities.



FAIRGROUNDS BUILDINGS & ARENA SPECIFICATIONS

Facility	Section	Dimensions	Area	Capacity	Notes
COMMUNITY BLDG has main room plus connects to smaller, separate meeting room	Main Room (banquets, meetings, trade shows)	35' X 120'	4,200 sq. ft.	280 reception 225 (seated)	PA system, warming kitchen, tables/chairs
	Sagebrush Room (meetings, trainings)	26' X 32'	832 sq. ft.	50	Kitchen available
JOCKEY CLUB BLDG (meetings, trainings, small receptions)	Main Room	28' x 31.5"	882 sq. ft.	50	Counter, refrigerator, microwave,
	Staging Area		365 sq. ft.		Showers, Concrete Floor
GRANDSTANDS LOBBY	Vendor space, trade shows, dog matches		5,600 sq. ft.		Concession 5 Men+1HC 12 Wom+1HC
GRANDSTANDS				3,000-4,000 General Adm Seating	Arena Lighting PA System Power tap boxes

❖ ARENAS & EQUESTRIAN AREA:

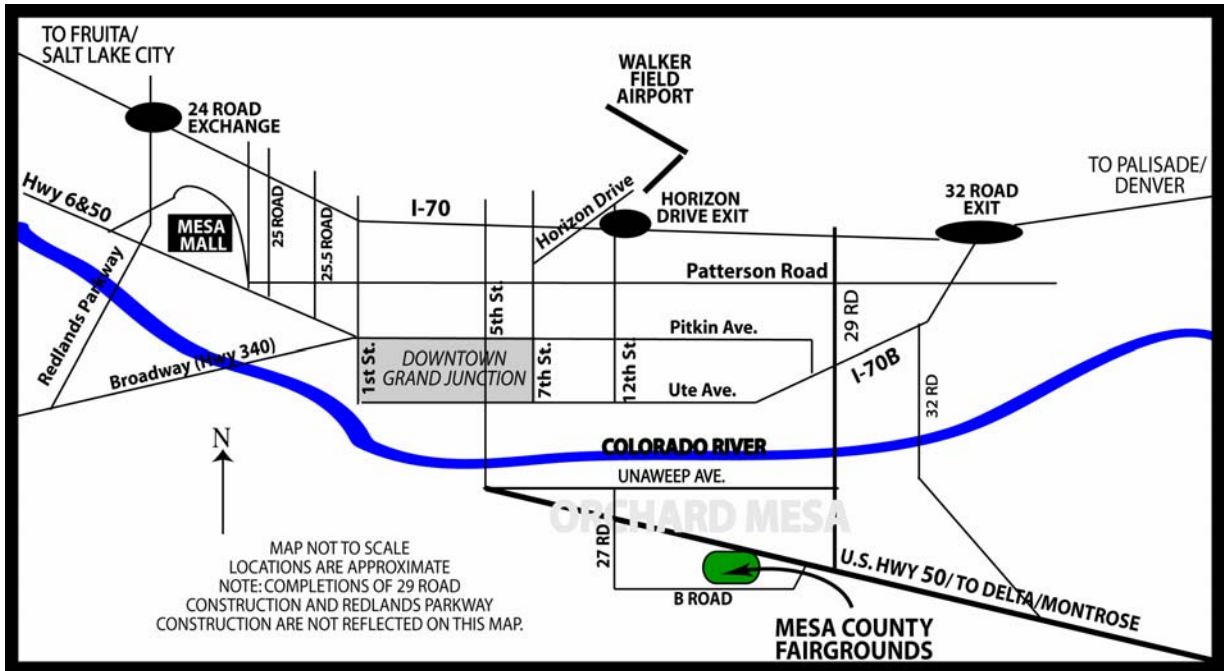
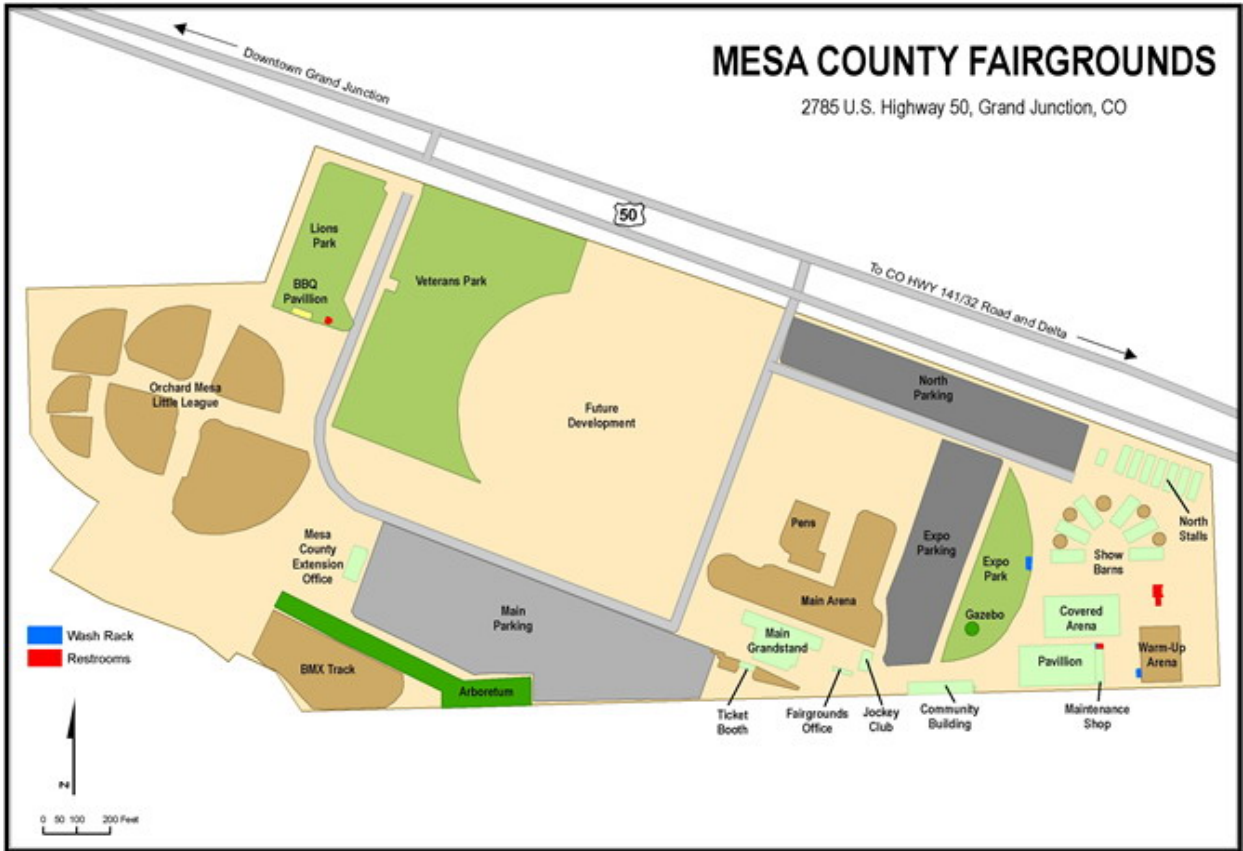
Facility	Dimensions	Area
Warm Up Arena	150' x 50'	7,500 sq. ft.
Covered Arena	225' x 125'	28,125 sq. ft.
Practice Arena (Grandstands Area)	275' x 150'	41,250 sq. ft.
Grandstand Arena	250' x 125'	31,250 sq. ft.

❖ BARNS & STALLS:

Facility	Barns	# Stalls	Stall Size	Total Stalls	Notes
Show Barns	6	16 per barn	12' X 12'	96	Semi-circular set-up
North Barns	7	14 per barn	12' X 12'	98	Parallel to Hwy. 50
Livestock Pavilion	--	40-60	12' X 12'	40-60	Portable Stalls
Total Stalls				194 fixed plus 60 portable=254	

❖ PARKING SPACES FOR CARS:

Main Lot	Asphalt	806 cars - 21 ADA spots - lights
Overflow Lot (next to main)	Roadbase	Approximately 200
Exposition Lot	Roadbase	Approximately 500
North Lot	Roadbase	Approximately 200





Scheduling Process – How to Book An Event

In order to schedule an event or activity, you will need to contact the **Fairgrounds office at 970.255.7107**. The steps shown below are a guideline and should be followed as closely as possible; however, there may be additional requirements depending on the nature of your event or activity.

1. Contact the Fairgrounds office to determine the availability of the facilities.
2. Book the date with the Event Coordinator. Please be prepared with all necessary information regarding your event or activity. *Do not leave this information on our voicemail.*
3. After booking your event or activity, you will be sent (or you may pick up the copies at the office) a Booking Slip, a Facility Application and a copy of this booklet. The Application will need to be completed, signed and returned as soon as possible to the Fairgrounds office. In order to secure the date(s) you requested, you must send in your damage deposit payment at this time as well. **Your date(s) is not confirmed until the Fairgrounds has received your deposit payment and your application approved.** If your application is not accepted we will return or refund your deposit.
4. Once the Facility Application is reviewed and approved, we will generate and mail a Use License (or contract) along with other documents necessary for maintenance and other services for your event. Review the License and all attachments, then sign and return the License and any other requested documents and any facility rental pre-payments to the Fairgrounds office.
5. You will now need to contact the Fairgrounds office to arrange for an inspection and possibly a pre-event meeting to coordinate all aspects of your event.
6. Post-event inspections, ticket reconciliation, and any other matters will be addressed immediately after the event. Refunds on deposits, if any, generally occur within two weeks of your event, but could take longer, to process and place in the mail.

GENERAL USE POLICIES

Mesa County Government retains control and management of Mesa County Fairgrounds (MCFG) at all times, and has the right at all times to enforce all rules and regulations described hereto, and has the right to reject all persons who fail to comply with the rules and regulations.

Access During Events

Mesa County Facilities and Parks and MCFG employees are responsible for the management and maintenance of the Fairgrounds facilities and property and have the right to access the facilities and property at any time during any event.

Accidents and Injuries

When accidents and/or injuries occur it is imperative that first aid be administered at once. Notification should then be made to any emergency services either on property (if available) or by calling 911 if not available.

If the security services are employed, notification should be made to the chief of security at that time and any paperwork completed as required. If there is no security employed at the time of the accident or injury, please contact the MCFG staff at 970-255-7107. Complete any required documents at that time.

For those individuals or organizations involved in equine or llama activities, please be aware of the Colorado law regarding such activities.

Additional Services

Event Holders may need to provide any ushers, announcers, traffic control, trash crew, and other personnel necessary to conduct the event or activity. Some of these additional services are available from MCFG on a fee for services basis.

If the Event Holder uses the facilities on weekends or holidays, they may need to have a MCFG employee present or available. The Event Holder will be required to pay for the services at the hourly rate for that assigned employee on that day. In some cases the Event Holder will be charged the overtime rate per hour for that assigned employee. MCFG will attempt to minimize these charges; however these costs are ultimately borne by the Event Holder as the users of the facility.

Advertising and Announcements

The MCFG has a considerable amount of advertising and sign space available in most areas on the premises. Use of these areas by the Event Holder or event sponsors is subject to the approval of the MCFG. MCFG reserves the right to approve or deny any display. Please keep in mind that the MCFG is a family oriented venue and all advertising being considered will be reviewed for appropriate content.

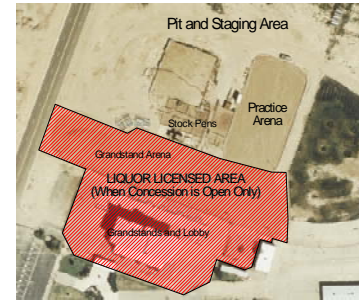
MCFG or its designee, at such reasonable time, or times as it may deem appropriate, may announce, or request to be announced, over the public address system in the premises (regardless of the ownership of such public address system) various announcements.

MCFG also retains the right to use, and may use, the sound system and display advertising capabilities and facilities on the premises in any manner which, in its opinion, shall be construed, as desirable or appropriate.

Alcohol / Illegal Substances

**THE MCFG IS A DRUG AND ALCOHOL FREE ZONE.
NO UNAUTHORIZED ALCOHOL IS ALLOWED.**

The exceptions to the alcohol policy are in the licensed area of the Grandstands when alcoholic beverages are being sold at the concessions, at designated areas when a special event liquor license has been issued, or at a private event is where alcohol is given away.



Private events held inside one of our buildings, where complimentary alcoholic beverages are served such as weddings, have specific insurance and security requirements. These requirements will be discussed with the event holder in advance and must be verified (and in place) before the beverage service is authorized. See sections on insurance and security.

SPECIAL EVENT LIQUOR LICENSES: Special events liquor licenses are available from Mesa County for areas other than the main Grandstand area shown on the illustration. If you wish to obtain one of these licenses you must receive a letter of authorization from the MCFG prior to applying for the Special Events Liquor License. **Special Event Liquor Licenses are available to non-profit organizations only** and have guidelines and restrictions. Interested groups should contact the County at (970) 244-1800 at least three months prior to their event.

The sale of alcohol is solely at the discretion of the County, which monitors the liquor license for the MCFG. Any illegal sales or entry of alcohol on the MCFG, or any unauthorized consumption outside of the licensed areas, will cause the immediate termination of the event or activity.

Violations of this policy by you, anyone associated with you or your organization, any user or any person associated with a user, may result in the termination of your license, and you and all associated parties will be required to vacate the premises immediately. The violators may be subject to arrest and prosecution.

Camping on Mesa County Fairgrounds

MCFG is not licensed or permitted as a campground. Any persons desiring to stay overnight at the property must be here as part of a scheduled event and/or permitted by the Fairgrounds management and pay the required fees for camping. There are ten (10) RV hookups in the Equestrian Area that are available for rent during a scheduled show. The overnight hook up fee is \$20-\$25.00 per night. All overnight RV camping is charged whether hookups are used or not. Dry camping is permitted with authorization by the Mesa County Fairgrounds.

Cancellation of an Event or Activity

If the Event Holder needs to cancel an event or activity they should immediately notify the MCFG via phone and follow-up with a written confirmation indicating such.

If written notification is received 60 to 90 days prior to the first scheduled day of the license term, the Event Holder will pay a cancellation fee in the amount of thirty percent 30% of the licensed rental fee, plus any direct charges incurred by the Fairgrounds. If notice is received 59 to 31 days prior to the first scheduled day of the licensed term, the Event Holder will pay a cancellation fee in

the amount of sixty percent (60%) of the licensed rental fee, plus any direct costs incurred by the Fairgrounds. For any cancellation notice received 30 days or less prior to the first scheduled day of the licensed term, there will be no refund on the licensed facility fees. In addition, the Event Holder will be billed for any and all incidental costs and charges incurred by the Fairgrounds in preparing for the event or activity.

Cleaning the Facilities

The MCFG endeavors to maintain a clean, safe, and attractive facility at all times. Buildings are cleaned and prepped by MCFG prior to each activity. It is the responsibility of the Event Holder when using the buildings to clean the floors, bundle trash, and store tables and chairs properly after their event. All cleaning equipment and instructions are provided by MCFG. Post event cleaning services are available on a fee basis. MCFG reserves the right to charge the Event Holder or retain from the deposit, for the cost of any type of clean up or damage, including the removal of unusual amounts of rubbish.

Compliance with all Laws

All visitors and Event Holders, while on the premises of the MCFG, will comply with all laws of the United States and of the State of Colorado, all ordinances, resolutions, requirements, and agreements of the County of Mesa, all rules and lawful requirements of the Sheriff's Office and Fire Departments or other authorities of the County of Mesa having jurisdiction in the circumstances, and all policies, procedures, requirements, and agreements of MCFG. Anyone found to be in violation of any of the above will immediately desist from or correct such violation, and may be subject to removal from the premises, and arrest by law enforcement.

Damage Deposits

All Event Holders are required to pay a damage deposit prior to the event. The deposit is necessary to secure the booking dates. The deposit will be refunded if the facility and property are left in a clean state and there are no damages. The deposit is due and payable at the time the Facility Application is submitted (see page 27 for deposit fees). An increased damage deposit may be required under certain circumstances. The Event Holder is held responsible for all damages to the MCFG property. All costs deemed necessary and incurred by Mesa County for replacement and/or repairs caused on behalf of the Event Holder will be billed within 10 (ten) working days after the event.

MCFG may require an Event Holder to set up a pre and post event inspection with our maintenance staff. MCFG reserves the right to make the final determination of the refund.
Decorations

The Fairgrounds staff will make every attempt to meet your needs, however, the posting of any posters, signs, banners, and alike materials to be used as decorations must first be approved by the MCFG staff. Certain facilities have specific regulations regarding the attaching of any materials to ceilings, doors, walls, or other painted surfaces. We ask that all Event Holders discuss their decorating plan prior to the event. It is the responsibility of the Event Holder to remove any decorating materials immediately following the event.

Display Advertising

The MCFG is a family oriented facility. Therefore, the Event Holder may not distribute, circulate, permit to be distributed or circulated, any advertising matter, program or signs at the entrance to, or about any part of the premises, except such advertising programs as may pertain to the immediate attraction for which the License is granted, and only with the approval of the MCFG. Please discuss your display advertising needs with the MCFG staff in advance of your scheduled activity.

Signage in the Grandstands Arena area under and around the announcer's booth is the sole property of the MCFG and will not be covered, removed, or damaged in any way. Any damage or loss of signage will be charged to the Event Holder and/or deducted from the damage deposit.

Dogs

Dogs must be on a leash at all times while on Mesa County property. Owners are required to clean up all manure left by their animals and dispose of property.

Donations to the Mesa County Fairgrounds

From time to time groups have donated labor, materials, and equipment to the MCFG for use at the Fairgrounds. It is understood that these donations become the property of Mesa County at that time. It is also understood that these donations in no way confer special privileges or discounts upon the donors to the Fairgrounds.

Emergency Medical Personnel

Emergency Medical Technicians (EMT) are required at each event where there is substantial risk of injury to the contestants or audience. MCFG has set the following guidelines based on attendance and whether alcoholic beverages are served. Need is determined on an event-by event basis in the Park Areas. Activities using the Community Building and the Jockey Club are excluded from EMT requirements.

Securing and/or notifying EMT and paramedic personnel is the responsibility of the Event Holder. The word 'notified' indicates that the Event Holder has notified local paramedics or emergency dispatchers of the nature of the event, and start and end times. The Event Holder must verify this notification by providing a written copy to the MCFG.

EMT REQUIREMENT GUIDELINES

Attendance	No Alcohol Served		Alcohol Served	
	EMT/Ambulance	Paramedic	EMT/Ambulance	Paramedic
1 - 1000	No	No	No	No
1000 - 2000	No	Notified	Yes	Notified
2000 +	TBD	Notified	Yes	Notified

Equestrian Area and Arena Usage Guidelines

- **ACTIVITIES:** Riding arenas are open from dawn to dusk. Please read any notices and check the posted schedule before riding in the arena as groups and associations may have booked events with arena exclusivity. No riding is allowed unless pre-scheduled or during open riding times. Violation of these rules and regulations may result in revocation of access to the property.

- **ARENA PERMITS:** Permits are issued to all users of the equestrian arenas, with the exception of participants in a horse show during the actual event. Weekly and monthly riding permits for local residents are available for a fee and obtained at the MCFG office. The riding permit (and parking pass) must be displayed or presented to any Fairgrounds staff person or designee upon request. Riders failing to display their riding permit will be asked to leave the arena. (Refer to page 28 for rates).

- **RIDING ONLY:** Arenas are available for riding only. Horses are not to be turned loose at any time.

- **SCHEDULING:** Scheduled events and organized riding activities for groups are scheduled through the Fairgrounds office and take priority over individual open riding. To reserve a specific time, call the MCFG office.

- **TIE-UPS:** Tie-ups are allowed only in designated areas. Violators will be assessed a cleanup and damage fee. Absolutely no tie-ups allowed in parking areas, to barn doors, water faucets, arenas, or similar devices or structures. **TYING OF HORSES TO ANY ARENA IS NOT PERMITTED.**

- **STALLIONS:** Stallions may only be boarded with professionals holding current Commercial General Liability insurance coverage in the amount of \$1,000,000.00 combined single limit per occurrence which has been approved by the Mesa County Risk Management Department.

- **WASH RACKS:** Animals are to be washed only at wash racks. Washing of vehicles at wash racks is prohibited.

- **OPEN STALLS:** Opening of locked stalls must be scheduled during regular business hours.

- **DOGS:** Dogs must be on a leash at all times while on Mesa County property. Owners are required to clean up all manure left by their animals.

- **LAWN AREA:** No horses are allowed on the grass or allowed to be tied to the white vinyl fence around or near the grassy lawn area.

- **ARENA GROOMING:** Grooming of the arena is handled by MCFG staff only. Equipment that is not owned by Mesa County shall not be used on Mesa County property without written authorization from the MCFG staff.

- **ARENA HARDPAN:** The arena hardpan has been groomed to special standards to accommodate diverse events. Any damage to the hardpan, whether intentional or accidental, will result in loss and damage assessment against the users of the facility. It is imperative that the hardpan be protected, and not penetrated in any way. Stakes or other items that could potentially damage the hardpan, or create a potential hazard for animals, are not allowed in the arenas.

- **ROUND PENS:** The round pens in the barn area are for the licensed users of MCFG, including trainers and other scheduled events. Please limit the time a horse is in the round pen in order to allow other boarders to use the pen. At no time will placing an animal in a round pen be considered a substitute for procuring a stall.

- **HELMET POLICY:** MCFG does have a helmet policy for riders age 17 and under. See Appendix A.

• **HORSE RIGHT-OF-WAY:** In all areas of the MCFG, horses have the right-of-way over vehicles. Pedestrians have the right-of-way over all vehicles and horses.

• **MANURE AND TRASH:** Owners are required to clean up all manure left by their animals, including horses outside of the arena. Manure is to be placed only in designated areas. These areas are posted with an identification sign and instructions. Trash must be placed in the appropriate containers and dumpsters. If an Event Holder fails to place all animal waste and trash in the proper locations, they will be assessed labor charges that will be withheld from the damage deposit.

• **CARE AND CLEANING:** In order to maintain a lower cost of operations, Event Holders will need to provide all bedding, feed, water, and care for any and all horses housed or otherwise brought onto the premises. Horse stall cleaning performed by the Fairgrounds staff is charged at \$5.00 per stall. Animal owners must maintain and care for all animals in a manner consistent with the standards as established by Mesa County Animal Control. MCFG reserves to the right do periodic inspections and to contact Animal Control if they feel it is necessary.

• **EQUESTRIAN PROFESSIONAL ENDORSEMENT:** Equestrian professional is defined as anyone who provides services for compensation, or who provides services under the auspices of a professional. If anyone is using the Mesa County Fairgrounds under these conditions a professional endorsement must be signed and all qualifications must be met as specified or required. These requirements include, but are not limited to, Mesa County insurance requirements, certifications, ownership documents, and incorporation papers. If anyone is not able to provide the appropriate documents or meet the requirements they may not operate as a professional on the premises. Violation of this requirement may result in legal action to the full extent allowed by law.

EQUINE AND LLAMA LAW

“WARNING: Under Colorado Law, an equine professional is not liable for an injury to or the death of a participant in equine activities resulting from the inherent risks of equine activities, pursuant to section 13-21-119, Colorado Revised Statutes.”

“WARNING: Under Colorado Law, a llama professional is not liable for an injury to or the death of a participant in llama activities resulting from the inherent risks of llama activities, pursuant to section 13-21-119, Colorado Revised Statutes.”

End of Equestrian Only Section

Equipment on Mesa County Fairgrounds

Operation of County Equipment - Use of equipment owned by Mesa County and MCFG, is at the discretion of the Fairgrounds Management. County equipment must be operated by County personnel only. The staff of the Fairgrounds may only move any Fairgrounds equipment, such as bleachers, tables, motorized equipment, or trailers. Costs for damage, maintenance, or any action to return equipment to its prior status will be charged to and paid by the Event Holder.

Non-County Owned Equipment - Personal equipment brought to MCFG for operation, such as for modifying or grooming the arenas, must be approved by the Fairgrounds management in advance. All work performed on the facility must be approved in advance, and presented in detail to the Fairgrounds management. The Event Holder will pay any repairs for damage that might be caused due to work, whether it is approved or not approved. Prior to the commencement of any work on MCFG property, proof of insurance must be filed with the MCFG and be approved by the Fairgrounds and/or the Mesa County Risk Management Department.

Event Operating Hours

Mesa County Board of Commissioners has established certain hours that specify the operating time for events held at the Mesa County Fairgrounds.

Outdoor Events: Outdoor events at MCFG will need to be completed prior to or at 10:00 PM on weekdays (Monday through Thursday) and 11:00 PM on weekends and holidays. Special permission may be granted to certain events to extend until midnight, however, no exceptions will be made to extend any event time past midnight. This includes events held at the Park Complex, the Covered Arena, the Pavilion, the Grandstands, the Parking Lot, or any other outdoor area.

Indoor Events: Indoor events at MCFG will need to be completed prior to or at 10:00 PM on weekdays (Monday through Thursday) and 11:00 PM on weekends and holidays. One event per weekend may be extended until midnight in both the Jockey Club and the Community Building. Special permission may be granted to certain events to extend until midnight, however, no exceptions will be made to extend any event time past midnight. This includes events held at the Community Building, the Jockey Club, the Grandstand Lobby, or any other enclosed area.

Event Setup

MCFG offers set up and tear down services for your event. Contact the office to discuss specific needs and staff availability. Please refer to the rate table and incidental charge sheet (page 26).

Facility Alterations

Event Holders shall not undertake any plumbing, electrical, telecommunications, carpentry or mechanical work on any of the facilities. Special event requirements must be submitted in writing a minimum of 30 days prior to the event to the Mesa County Fairgrounds staff.

Facility Lighting

The main arena lights and seating lights in the Grandstands Complex are turned off usually within thirty minutes after an event is concluded providing the area is safely cleared. Event Holders may request additional pre or post lighting in advance by contacting the Fairgrounds office. Lighting in the Covered Arena is available on a per event basis for a fee. Please refer to the rate schedule on pages 26. There is no charge for lighting in the Community or Jockey Club Buildings.

Fees and Rates

MCFG is privately owned by the County of Mesa, Colorado and is provided for the use and enjoyment of the citizens of Mesa County. The costs of maintaining this facility are borne partially by the citizens of Mesa County under the auspices of the Mesa County Board of County Commissioners (BOCC), and partially by the direct users of the Fairgrounds. Fees and rates are reviewed annually by the BOCC. Certain groups are eligible for discounts on fees for use of the Fairgrounds. See pages 26-28 for the facility rental rates and fee schedule. The Fairgrounds accepts cash or checks for rental and damage deposit fees.

Fee Category	Group Definition	Discount
Commercial	Promoters and groups that are using the facility for a commercial purpose. Examples in this category are major ticketed events, auctions, merchandise sales, and most grandstand events.	0
Non-profit	Organizations with a 501(c)(3) under IRS certification or a 'non-profit' organization by the State, providing appropriate certification. Examples in this category are community organizations such as Lions Club and most museums.	25% discount
Resident	Individuals who have proof of residency in Mesa County. Proof can be in the form of a Colorado Driver's License or Identification Card.	10% discount
Youth	Youth organizations with a 501(c)(3) under IRS certification or a 'non-profit' organization by the State, providing appropriate certification. e.g. Boy and Girl Scouts, Mesa County Partners, Grand Valley Pony Club.	40% discount
Municipal Organizations	Any federal or state government in the United States, Canada, or Mexico.	25% discount
Special Use	Any organization deemed to receive special consideration by the Mesa County Board of County Commissioners.	Discount or grant determined by the BOCC.
Recurring Rates	Organizations which use the facility on a regular, recurring basis (i.e. weekly on Tuesdays, monthly on the second Thursday, etc.) are eligible for an additional discount.	Case by case basis

Fee Payment Schedule and Deadlines

All License (facility rental) fees are due and must be paid no less than thirty (30) days prior to the first scheduled day, whether it is a set up day or the event day. At the discretion of Fairgrounds management, certain shows and activities may require a sixty (60) or ninety (90) day advance payment for license fees. If the Use License is being executed less than thirty (30) days before the first scheduled day, then the full license rental fee is due immediately upon execution of the License.

MCFG offers many other services to assist the Event Holder. The published fee and rate schedules and incidental expense sheets are attached to the License and included in this Event Holder's Guide on pages 26-28. (These rates as well as any rates referenced in this Guide and any attachments are considered incorporated within the Use License.)

Fee Payment Responsibility

The Event Holder must pay all costs and incidental charges incurred in staging the event on the MCFG. Such cost and incidental charges include, but are not limited to: electrical services, security, excessive water usage, specialized equipment usage, tables, chairs, bleachers, stages, and any labor or machinery costs associated with your event. Invoices are generated within ten (10) days after the event and payment will be due within thirty (30) days after receipt of the event invoice.

All fees, which are due in accordance with the Use License, shall be delinquent after ten (10) business days of the due date and shall accrue interest at the rate of eighteen percent (18%) per annum. Fees not paid after ninety (90) days will be assessed additional fees to the extent allowed by law and the account may be assigned to a collection agency, or pursued through legal proceedings at the County's election.

Fee Waiver or Reduction Requests / Special User Groups

It is the policy of Mesa County Fairgrounds that events paying full fee have priority over those activities that are paying a reduced fee or have been awarded complimentary use. Others will be considered based on time of request, potential benefit to the community and to the MCFG. Please contact the MCFG office for a Special User Request. These requests are approved by the Board of County Commissioners and are handled on an individual basis.

Fire Regulations

Fire regulations and codes are strictly enforced by the Grand Junction Fire Department. If you have any questions, please contact the Grand Junction Fire Department at (970) 244-1400. The MCFG also maintains final approval of all legal activities at the Fairgrounds. Heat lamps and heaters are prohibited inside the arenas, stalls, and barns.

Food & Beverages

Buildings: In the Community Building there is an equipped warming kitchen that can be used for catered events and for family-oriented potluck food service. The price to use the kitchen is included in the building rental. The Fairgrounds does not provide linens, utensils or serving pieces.

Outdoors: Food vendors participating at events must have a current Colorado retail food establishment license, proof of valid liability insurance, complete a MCFG vendor form, and meet Mesa County Health Department regulations (see section on Vendors). Promoters bringing in more than two food vendors must apply for a Coordinator's Event Permit from the Mesa County Health Department (see Vendors).

Grandstand Complex: Food and beverage service is provided by our exclusive concessionaire in this area. The menu includes typical foods found at similar establishments and are competitively priced. Beer is typically served at evening performances. Outside food and beverages are not allowed in the Grandstand Complex at ticketed events.

Glass Containers

Glass containers are prohibited on the Fairgrounds property.

Governing Law

Use of this facility, is governed by, construed and enforced in accordance with the laws of the State of Colorado and the venue for all legal proceedings hereunder shall be Mesa County, Colorado.

Insurance Requirements & Indemnification

Liability insurance is required for all commercial and some noncommercial events held at the Mesa County Fairgrounds. It is the responsibility of the event holder to obtain, at its own cost and expense, said insurance(s) necessary. Requirements are established with each Use License and are based on the planned activity. MCFG general requirements are listed below.

No individual or organization shall be allowed to use the facilities at the Mesa County Fairgrounds unless all requirements for insurance are met. These requirements pertain to all users without exception, including promoters, organizers, vendors, and private individuals. If an individual or organization fails to comply with the insurance regulations, MCFG reserves the right to cancel the scheduled event. Please contact the Fairgrounds office in advance to discuss insurance requirements for your planned activity.

Certificates evidencing insurance must be provided to MCFG in advance on an Acord 25-S form (or similar) with Mesa County Fairgrounds identified as the Certificate Holder and include the endorsement language shown below:

Licensors, its officers, officials, employees, and volunteers are ADDITIONAL INSUREDS, as respects liability, on behalf of the Licensee, arising out of this License.

The general requirements are as follows:

For Commercial and Public Events

- \$1,000,000.00*

• *Commercial General Liability* *Minimum coverage*
Coverage as a combined single limit per occurrence for bodily injury, personal injury and property damage is established by each Use License.
- \$1,000,000.00*

• *Automobile Liability*
Required for all commercial vehicles utilized by the Event Holder in the production of the event. Automobile Liability that is required is generally \$1,000,000.00 accident for bodily injury and property damage.
- *Workers Compensation Insurance* is required for all commercial events within the scope and limits set as required by the laws of the State of Colorado.

- \$150,000.00*

• *Host Liquor Liability Insurance (where alcohol is given away)* *Per injury - Per occurrence*
A separate policy is needed for private events where alcohol is given away (e.g. weddings) if the host family does not have adequate homeowners insurance.
- \$150,000.00*

• *Liquor Legal Liability Insurance (where alcohol is sold)* *Per injury*
Includes a per drink charge, admissions, donations, and/or tips *\$1,000,000.00 Aggregate per event*

For private or family events in our buildings (e.g. weddings and receptions) where alcohol will be given away, a copy of the host family's homeowners insurance (after review by MCFG staff) is often sufficient.

Other insurance endorsements and provisions may also be required by each Use License. It is the responsibility of each individual or organization requesting use of the facility to meet these requirements in the time required.

Deductibles and self-insurance must be declared to and approved by the Mesa County Fairgrounds and the Mesa County Risk Management Department as is required to be paid by the individual or organization being issued the Use License upon claim.

The insurance requirement does not reduce or eliminate the users' responsibility for taking precautions. These precautions shall be exercised at all times for the protection of all persons (including the employees and volunteers of the Mesa County Fairgrounds) and property. Safety provisions of all applicable rules and regulations shall be observed, and hazards arising from the work performed shall be guarded against or eliminated in accordance with the highest standards of safety practice. All users of the facility, and any subcontractors, must comply fully with all requirements of the Occupational Safety and Health Act, and any other pertinent rules or regulations.

For questions regarding these requirements, call the Fairgrounds office or the Mesa County Risk Management Department at (970) 244-1868.

Indemnification

All Event Holders agree:

You shall protect, defend, indemnify, and hold harmless the Mesa County Fairgrounds, Mesa County, its officers, officials, employees and agents free and harmless from, and against, any and all losses, penalties, damages, illnesses, or liabilities of every kind and character arising out of, or relating to, any and all claims, obligations, actions, proceedings, liens, or causes of action arising directly or indirectly, out of the activities contemplated under your License. Without limiting the generality of this clause, any and all such claims or actions relating to personal injury, or of any other tangible or intangible personal or property right, whether or not arising under the constitution of the state or federal government, or actual or alleged violation of any other applicable statute, ordinance, administration order, rule or regulation, or decree of court, shall be included in the indemnity hereunder.

Law Enforcement

All rules, regulations, and policies of the MCFG are enforceable by Mesa County Sheriff and any contracted security service in accordance with Colorado Revised Statutes 29-7-101 and as directed by the Mesa County Board of Commissioners.

Licenses, Taxes, Fees, and Permits

Special licenses and permits may be required for your event. Be certain to check with all applicable authorities to be certain you are in compliance at all levels. The Event Holder must obtain all permits and/or licenses required by applicable law, ordinance, resolutions and rules. Please provide copies of all required permits and/or licenses to the MCFG prior to the event.

Special taxes and fees may be applicable. Please know that any and all taxes, fees and assessments, including but not limited to, license fee, fees for permits, profits, sales or use taxes, personal property taxes or any other taxes that may be levied or assessed on the assets, shall be borne and paid by the Event Holder.

Mission Statement

The mission of the Mesa County Fairgrounds is to provide citizens of Mesa County with a multi-use event facility which serves agricultural, business, cultural, educational, recreational, urban and youth interests of Mesa County and the Western Slope.

Names of the Fairgrounds

Event Holders may make mention or reference to MCFG in any advertisement, ticket, placard, or other written or printed matter as well as any photograph, motion picture, television, tape recording or other matter circulated or published. The only name(s) that may use in reference to this facility is either Mesa County Fairgrounds or Fairgrounds.

Noise Ordinance

Mesa County currently has a resolution (#92-17-1b) restricting noise produced by events at the MCFG. The decibel level will not exceed 80 decibels from 8:00 a.m. to 11:00 p.m., and will not exceed 75 decibels for all other times.

Non-discrimination

No Event Holder using MCFG shall discriminate in the use of the premises against any person because of race, creed, color, religion, national origin, political belief or affiliation, age or sex, or disability. Everyone on the premises of the Fairgrounds must be in compliance with the Americans With Disabilities Act of 1990 (PL 101-336). If you have any questions, or need assistance in this area, please contact the Fairgrounds office.

Nonexclusive Licenses

The Use License is not an exclusive License. The MCFG, at its sole discretion, issue licenses to other entities for events of a similar nature to that covered under the License. Whenever possible, MCFG attempts to keep some separation between similar events deemed as competing. MCFG will advise you of other events taking place which may impact your event whenever possible.

Obstructions of Facilities or Grounds

Pedestrian and vehicular traffic on the MCFG can be substantial. No portion of the sidewalks, entryways, passages, halls, or way of access to public utilities on the premises shall be obstructed.

Occupancy Limits

Admission tickets sold at the MCFG must not be in excess of the seating capacity of the premises granted under each Use License. Due to safety concerns, occupancy levels are set by MCFG, Mesa County, and the Grand Junction Fire Department, and any other applicable codes and regulations.

Parking on the Fairgrounds

For the safety of all users, and in compliance with local and state codes/ordinances, no parking is allowed in fire lanes or where otherwise posted “No Parking.” Vehicles found in violation of this policy will be towed away at owner’s expense.

Photos

MCFG often records events and activities taking place on the property. All users of the MCFG, by virtue of their presence on the property, are consenting to allow Mesa County, and the Fairgrounds, rights to photograph them, their guests, participants, and the event itself while on the property. These photographic or video images shall be the property of Mesa County and are for educational, promotional, or documentation purposes only.

Promotion of Events

Event information is posted on our outdoor marquee and on the event telephone hotline, plus all public activities held at the MCFG are listed on event schedule of the MCFG web site. In addition a calendar of events is distributed monthly to local and regional chamber of commerce offices and visitor and convention bureaus. MCFG also frequently produces short stories and/or photo stories regarding upcoming events for consideration in the Mesa County Employee Association newsletter and other publications.

Raffles, Collections, etc.

No collections, whether for charity or otherwise, shall be made or attempted without the prior written consent of the MCFG. Raffles are governed by the State of Colorado. If a raffle is held for any cause, they Event Holder must secure a license from the Department of State, State of Colorado. A copy of this license must be presented to the MCFG at least ten (10) days prior to the event.

Restroom Facility Requirements

MCFG has restroom facilities in most areas of the premises. For some larger events, however, extra facilities must be brought in. The table below indicates the number of portable toilets needed at each location for your event. The Event Holder shall be responsible for arrangement and payment of the portable toilets or MCFG can make arrangements on your behalf and include this service on the final invoice.

Portable Restroom Guidelines {in addition to existing facilities}:

Expected Attendance	Park Areas		Equestrian Area	
	Men’s	Women’s	Men’s	Women’s
1 – 249	0	0	0	0
250 – 499	2	2	0	0
500 - 999	2	4	0	4
1000 - 1999	6	8	4	6

Rights of First Refusal

As a matter of practice, MCFG allows historical users of the facility the right of first refusal for scheduling the same event in the following year on approximately the same date. This option is contingent upon submitting a deposit to hold that date. MCFG may refuse to honor a right of first refusal based on the performance, cooperation, use of facilities, payment history, or other reasons deemed necessary by MCFG staff. This right of first refusal pertains only to the event currently scheduled and does not give anyone preferential rights to schedule additional events. Additional events will be scheduled in accordance with the policies and procedures established for MCFG.

Security Officers

All security for the MCFG is provided through a security vendor by contract. If the event requires security services (see table below), please contact the MCFG office to make those arrangements. Any event in which alcohol is served requires security and liability insurance.

Security Requirements

The establishment of security requirements for an event will be made by the MCFG staff and is necessary for the orderly operation of activities held on the MCFG. These security guidelines are established for the protection of life and property while events are in progress and may include officers before, during, or after events. All security costs are borne by the promoter/renter of each event.

All security officers will be arranged and managed by MCFG. Security will cover all areas of each event, including but not limited to grandstands, lobby, arenas, buildings, restrooms, stock and pit areas, parking lots, entrance and exit areas, announcers areas, any and all other areas, and any adjacent or associated areas. The Fairgrounds will also furnish adequate police protection for each event in accordance with all federal and state laws, and local ordinances and resolutions, Mesa County and MCFG Policies and Procedures.

General Guidelines for Security (each event will be evaluated by MCFG staff and levels set)

Attendance	No Alcohol Served		Alcohol Served	
	Security	Law Enforcement	Security	Law Enforcement
1 - 250	0	0	1-2	0
251 - 500	0	0	2-4	0
501 - 1000	0	0	4	0
1001 - 2000	4	2	6	2
2001 +	6	2	8+	2+

Security guards or law enforcement must be present prior to the beginning of the event and must remain until all crowds and traffic are dispersed and evacuated. Security services are required at private or family events in the Community Building and/or Jockey Club where alcohol is given away regardless of the number of attendees.

Separation of Events

MCFG continues to pursue quality events at the facility. Mesa County always reserves the right to schedule any events in its facilities it deems to be of interest to the citizens of the Western Slope and meets its mission as approved by the BOCC. As a courtesy to all Event Holders, the MCFG may refrain from scheduling events of a similar nature sixty (60) days prior to an event or thirty (30) days after an event. Some restrictions may apply even outside of these parameters in areas such as advertising prior to a similar event. Check with the MCFG office for these stipulations.

SET UPS (STANDARD)

The base fees stated in this guide are for each facility with a standard set-up. Standard set-ups for each facility are listed below. Additional requirements should be listed on the Facility Use Application and discussed with the Fairgrounds. Most common incidental expenses are listed on Appendix B.

Facility	Standard Set-up Description
Community Building	Building only. Includes kitchen facilities, restrooms, pa system. Bridal dressing room (fee charged) (No placement of tables, chairs, or other furniture.)
Sagebrush Meeting Room	Meeting space, restrooms, counter, kitchen facilities. (No placement of tables/chairs.)
Jockey Club Building	Building only. Three restrooms, two showers, Refrigerator, microwave, and counter/bar area. (No placement of tables, chairs, or other furniture.)
Covered Arena	Clean and groomed prior to booked date Gate at each end, Announcer's platform, pa system Use of Registration/Show office building on northeast corner One working-watering per day
All Arenas (except Covered Arena)	Open, clean, and groomed arena prior to booked date Arena groomed prior to booked date
Pavilion	Stalls and pens set-up standard All stalls clean and functional - <i>Shavings required for each stall</i>
RV Spaces	Clean pad Hook-ups functional and operating; reservation signs in place
Barns and Stalls	Clean and functional <i>Shavings are required in all stalls and are available from MCFG for a fee</i>
Grandstand Lobby	Building only with restrooms (seasonal) No tables, chairs, or other furniture
Park Complex: Lions/Veterans Park	BBQ Pavilions clean Trash cans available and clean. Restrooms open and clean (seasonal). Grass mowed. Sprinkler lines identified (as necessary)
All Parking Lots	Asphalt parking lots clean and swept (as necessary) Dirt parking areas free of debris
Grandstands	Clean, swept, washed down, trash receptacles in place Lobby clean, swept. Restrooms clean (seasonal)

Sharing of Facilities and Services

MCFG is used for many activities, events, operations, and engagements. The use or availability of services and facilities is dependent on demand. As a condition of the use of this facility, the Event Holder must agree to comply with established schedules so established and to cooperate in shared arrangements. The Fairgrounds Staff will keep each Event Holder aware of any and all events occurring on the same dates.

Smoking Prohibited

Smoking is prohibited in any enclosed area, i.e., inside the Grandstand Lobby, in the Grandstand seating areas, the Jockey Club, the Community Building, in the arenas, pavilions, or barns. Any violation of this policy MCM #93-39 will precipitate the eviction of the person or persons involved. Event Holders will need to make public announcements as to the “no smoking” policies of the property. These announcements must be made, at minimum, through the P.A. system at the start of all events and all intermissions.

Stall Use & Rental

Overnight and daytime use of the stalls is arranged through the Fairgrounds office. No unauthorized overnight stalling is permitted. Stalls used in conjunction with shows are reserved in advance by the show promoter and billed accordingly. Shavings are required in all stalls. Rental fees and clean up fees apply (see page 27 for fees).

Storage - Responsibility

Mesa County shall not be liable in the receipt, handling, care or custody of property of any kind shipped or otherwise delivered to the premises, either during or subsequent to the use of the facilities by the Event Holder, the Fairgrounds shall not be liable for any loss, damage or injury to such property.

Speed

Please observe all posted speed and traffic signs. Speed limit in the barn area is 10 mph.

Taxes (Sales)

The State of Colorado sales tax is 2.9% and Mesa County tax is 2.0%. The total tax to be collected at the Mesa County Fairgrounds is 4.9%. Either the promoter may request a special event sales tax license and be responsible for all the different vendors or each vendor may request their own. A one time license is \$8.00 and a 2 year multi event license is available for \$16.00.

Vendor special event license applications are available at the Fairgrounds office; however, all applicants must go to the Grand Junction Dept. of Revenue Service Center at 222 S. 6th St. Room 208, Grand Junction CO 81501. Applicants may call 248-7140 for more information.

Ticketed Events

It is the responsibility of the Event Holder to arrange for ticket production, advance ticket sales and distribution, managing the gate, and providing the change fund. If requested, MCFG staff can

secure temporary labor to act as ticket handlers. Charges for the labor will be discussed in advance and included on the final billing. The Fairgrounds does not have a portable ticket booth.

Traffic Control

State Patrol – The Event Holder is required to have the Colorado State Patrol for Highway access traffic control for events with more than 1,500 people exiting at the same time. The Event Holder or promoter is responsible for securing (and payment of) services of the Colorado State Patrol. Two week advance notice and proof of liability insurance is required.

Parking Lot – Events in excess of 1,000 attendees per day, shall require parking attendants to assist with traffic entering or leaving any public area. These services will be arranged by MCFG staff but will be provided by the Event Holder for a fee. Parking lot control is essential for the safety of the attendees of each event.

Use Restrictions

Mesa County Fairgrounds reserves the right to refuse event bookings that the event may cause undue or unusual damage to the facilities or that may violate local, state, or federal laws, regulations, or rules. No event shall be scheduled at the MCFG that would interfere with the annual Mesa County Fair held in July.

Vendors

All vendors participating at an event at the MCFG must be discussed with staff in advance. MCFG vendor application forms are provided to the Promoter for distribution. The completed application, and their accompanying insurance certificate (if necessary), must be returned to Fairgrounds office for review prior to the event. Food vendors on the property must meet Mesa County Health Dept. regulations (see below) and provide proof of valid general commercial liability insurance.

MCFG has three categories of vendors: 1) commercial (manufactured or handmade items for sale), 2) non-commercial (display or information only) and 3) food/beverage vendors. The Event Holder/Promoter will be charged a daily fee per commercial and/or food vendor in accordance with the fees listed on page 26.

The Mesa County Health Department requires all food vendors to have a 2008 Colorado Retail Food Establishment License and have completed the Health department's Licensed Vendor Temporary Event Information form in advance of the event. Food vendors without a current Colorado license must contact the health department to begin a plan review process to obtain a license. Nonprofit organizations serving food are required to contact the Mesa County Health Department in advance of any planned food service at the Fairgrounds.

For larger events (whenever there are more than two food vendors and/or 5,000 or more expected event attendees), the event coordinator/promoter needs to submit an Event Coordinator's Application for Temporary Events form to the Mesa County Health Department. The application must be received by the Health Department at least 30 days in advance of the event. The application forms can be downloaded from: www.health.mesacounty.us or call 970.248.6962.

Weapons, Firearms and Fireworks

All firearms, fireworks and weapons used, demonstrated, discharged or for decoration as the part of the licensed event must be approved by the MCFG. Law enforcement officers and licensed security personnel are exempt from these requirements. No other firearms or weapons are permitted upon the property of the MCFG. Persons or organizations allowed to bring firearms or weapons on the premises must comply with all laws, rules, regulations, permits or other requirements. The MCFG shall establish requirements covering firearms and weapons and fireworks for each user.

APPENDIX A

Mesa County Policy on Helmets

Due to the unpredictability in equine behavior, and a concern for the health and well-being of children, the Mesa County Board of Commissioners passed unanimously Resolution MCM-2001-135 requiring the use of equine industry standard helmets or the signing of a notarized waiver of liability by the parent or guardian. This resolution applies to individual riders and boarders, as well as all organizers, and promoters of equine events.

Organizers and promoters shall assure that all participants are in compliance with this resolution. Contact of MCFG office for the Helmet Waiver of Liability.

HELMET POLICY (Resolution MCM-2001-135)

All riders age seventeen (17) and under must wear an equine industry approved helmet while in the Mesa County Fairgrounds arenas or while riding an animal anywhere on the premises of the Mesa County Fairgrounds ("Fairgrounds") or must provide a waiver of liability signed by a parent or guardian. Riders age seventeen (17) and under who do not comply with this policy will lose their privilege to participate in any further activity at the Fairgrounds until the signed waiver is provided. The event organizer is required to implement this regulation or to obtain signed waivers from their riders.

APPENDIX B
2008 INCIDENTAL EXPENSES & RATES

*The costs below are for services not included in the Standard Set-up (see page 22).
 Any requests not covered in the Standard Set-up shall be incidental and subject
 to the charges listed below.*

INCIDENTAL EXPENSES

- Extra Arena Grooming: \$15.00 each
- Extra Arena Watering/Working \$20.00 each
- Stall Watering Hourly rates
- Stalls: Show (day use) \$10.00 (*discounts can apply*)
 + \$5.00 one-time cleaning fee
- Additional Lighting \$100.00/hour Grandstands (*afterhours*)
 \$ 50.00/day for Covered Arena
- Security Officers \$19.00/hour

ADDITIONAL LABOR SERVICES & RATES

- Loading/Unloading Hourly rates apply
- Moving/Hauling Hourly rates apply
- Furniture Set-up or Tear down Hourly rates apply
- Building Cleaning Fee (after the event) Hourly rates apply
- Equipment Use Rates \$25.00/hr – 30 minute minimum
 (e.g.loader, dump truck, tractor)

MAINTENANCE STAFF HOURLY RATES

- Maintenance Tech Rate \$17.00/hour Overtime Rate \$25.00/hour
- Supervisor Rate \$23.00/hour Overtime Rate \$34.00/hour

***Notice:** All facilities must be returned to their original condition by the renter/promoter.
 Any labor utilized for the cleaning, and returning the facilities to the original condition, will be
 billed at the hourly rate.*

VENDOR RATES

- **Food Vendor*** \$50.00 per day for Grandstand events
 \$25.00 per day for Arena/Buildings/Park Areas
** Proof of Liability Insurance Required -- Must be pre-approved by MCFG and Mesa County Health Dept.*
- **Commercial Merchandise Vendor**
 \$25.00 per day for Grandstand Events
 \$10.00 per day for Arena/Buildings/Park Area
Additional \$10.00 for those merchandise vendors requiring electricity.

PORTABLE ELECTRICAL POWER

MCFG has a portable power system available for rent. Fuel and generator costs are not included.

	Set-up/Strike Charge	Daily Charge	Weekly Charge
• One leg Only (200 amps)	\$350.00	\$250.00	\$650.00
• Full system –two legs (400 amps)	\$520.00	\$275.00	\$725.00
• Full system –three legs (600 amps)	\$675.00	\$325.00	\$760.00

EQUESTRIAN AREA RATES

- | | |
|----------------------------------|--|
| • Individual Arena Riding Permit | \$5.00 daily
\$15.00 14-day pass
\$30.00 monthly |
|----------------------------------|--|
- | | |
|----------------------------|---|
| • Stalls Rentals for Shows | \$10.00/day
\$7.50/day for eligible nonprofits |
|----------------------------|---|
- | | |
|------------------|------------------------------|
| • Stall Cleaning | \$5.00 one-time cleaning fee |
|------------------|------------------------------|
- | | |
|-----------------------------|----------------|
| • Stall Shavings (required) | \$7.25 per bag |
|-----------------------------|----------------|
- | | |
|------------------------------|--|
| • Stalls: Overnight Boarding | \$20.00/night
<i>Includes shavings & cleaning</i> |
|------------------------------|--|
- | | |
|---|---|
| • RV/Camping
(water/electric/sewer hook ups) | \$20.00 per night /30 amp
\$25.00 per night / 50 amp
\$10.00 per day use during shows |
|---|---|

** discounted rates available for eligible groups/residents*

APPENDIX C
2008 FACILITY FEES & RATE SCHEDULE

Facility	High Usage Days (Friday, Saturday & Sunday)		Low Usage Days (Monday – Thursday)	
	Full Day Rate 7:00AM-11:00PM	Deposit	Full Day Rate 7:00AM-11:00PM	Deposit
Community Bldg-- Main Room	\$400.00	\$350.00	\$225.00	\$250.00
Sagebrush Room	\$135.00	\$100.00	\$110.00	\$100.00
ENTIRE BLDG	\$475.00	\$350.00	\$300.00	\$250.00
Jockey Club Building	\$135.00	\$100.00	\$110.00	\$100.00
Livestock Pavilion	\$150.00	\$100.00	\$100.00	\$100.00
Building Rental includes tables and chairs Hourly rates from \$15-\$25/hour are available (3 hr minimum – 6 hour maximum)				
<u>Arena Rates</u>				
Covered Arena	\$325.00	\$200.00	\$200.00	\$200.00
Warm Up Arena	\$100.00	\$50.00	\$50.00	\$50.00
Grandstand Arena	\$250.00	\$200.00	\$200.00	\$200.00
Practice Arena <small>(adjacent to Grandstand Arena)</small>	\$200.00	\$100.00	\$100.00	\$100.00
<u>Grandstand Facilities</u> <small>(facility rental requires pre-event meeting)</small>				
Grandstand Lobby	\$200.00	\$150.00	\$150.00	\$150.00
Grandstand Arenas	See Above			
Grandstand Complex <small>(Arenas, Lobby, Seating Area, Main Parking Lot, Pit Area)</small>	Commercial Use: \$1,500 or 10% of ticket sales whichever is greater. Or other as mutually agreed.	\$2000.00	Commercial Use: \$1,000 or 10% of ticket sales whichever is greater. Or other as mutually agreed.	\$1,000.00
Main Parking Lot	\$150.00	\$250.00	\$130.00	\$250.00
<u>Parks</u>				
Exposition Park	\$220.00	200.00	\$120.00	\$100.00
Gazebo only	\$25.00	\$25.00	\$25.00	\$25.00
Park Complex <small>(Lions & Veterans Park)</small>	\$330.00	\$150.00	\$150.00	\$150.00
Veteran's Park	\$110.00	\$75.00	\$75.00	\$75.00
Lion's Park <small>w/Pavilion & Playground</small>	\$165.00	\$150.00	\$100.00	\$150.00
Main BBQ Pavilion in Lions	\$45.00 <small>(seats 60)</small>	\$50.00	\$45.00	\$50.00

► See page 15 for any eligible discounts to rates

