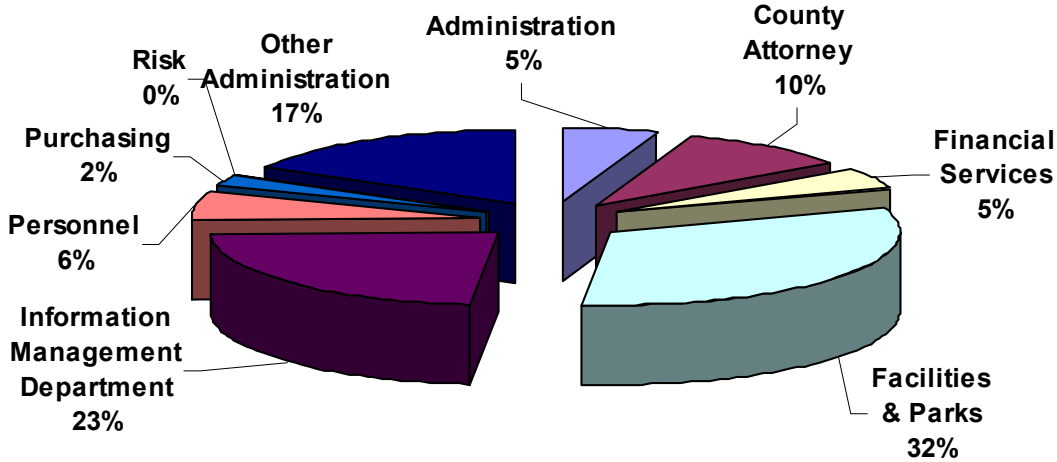


# ADMINISTRATION & SUPPORT SERVICES

## 2004 Expenditures

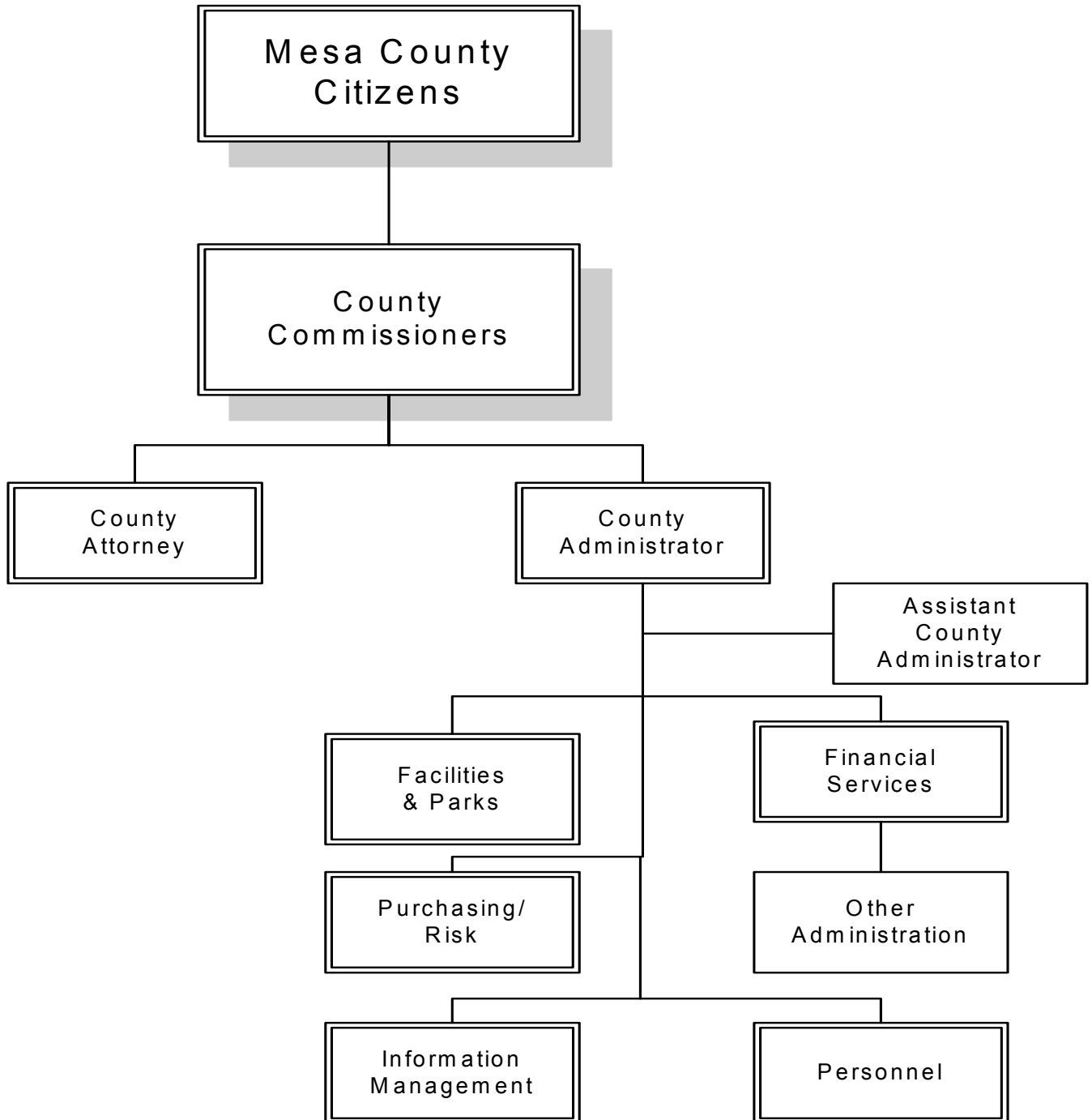


### Functions

- Administration
- County Attorney
- Financial Services
- Facilities & Parks
- Information Management
- Personnel
- Purchasing
- Risk
- Other Administration
- Contingency Fund
- PILT

**COST PER CITIZEN: 21 CENTS PER DAY**

# ADMINISTRATION & SUPPORT SERVICES



# ADMINISTRATION & SUPPORT SERVICES

	Actual Audited			Projected 2003	Budget 2004
	2000	2001	2002		
<b>Revenues</b>					
Department Generated	\$447,769	\$324,745	\$360,732	\$370,428	\$367,936
General Support Required *	\$5,965,228	\$6,317,216	\$6,898,473	\$8,759,320	\$10,003,986
<b>Total Revenues</b>	\$6,412,997	\$6,641,961	\$7,259,205	\$9,129,748	\$10,371,922
* Taxes, Transfers or Fund Balance					
<b>Expenditures</b>					
Personnel	\$3,220,838	\$3,610,419	\$3,728,101	\$4,524,526	\$4,649,329
Operating	\$2,946,228	\$2,921,041	\$3,283,139	\$4,201,362	\$5,362,638
Capital Outlay	\$245,931	\$110,501	\$247,965	\$403,860	\$359,955
<b>Total Expenditures</b>	\$6,412,997	\$6,641,961	\$7,259,205	\$9,129,748	\$10,371,922
<b>Authorized Personnel (FTE's)</b>	61.50	63.00	63.50	73.00	70.00

## Administration & Support Services

### Expenditure Summary

	Actual Audited			Projected 2003	Budget 2004
	2000	2001	2002		
Administration	\$409,241	\$449,631	\$480,039	\$557,656	\$556,881
County Attorney	\$577,136	\$623,705	\$682,869	\$869,140	\$998,243
Financial Services	\$365,087	\$373,677	\$396,790	\$455,108	\$497,761
Facilities & Parks	\$1,963,417	\$2,289,474	\$2,553,048	\$3,140,456	\$3,315,689
Information Management Department	1,394,436	1,510,639	1,836,152	2,041,856	2,358,293
Personnel	482,519	488,539	530,735	565,910	663,505
Purchasing	172,391	184,904	172,739	197,316	214,346
Risk	\$102,761	\$104,483	\$134,542	\$83,983	\$49,699
Other Administration	\$946,009	\$616,909	\$472,291	\$1,218,323	\$1,717,505
<b>Total</b>	\$6,412,997	\$6,641,961	\$7,259,205	\$9,129,748	\$10,371,922

## ADMINISTRATION

*~Our Mission~*

*To assist the Board of County Commissioners in formulating policies and goals, and to administer the daily operations of the County in order to implement Board policies and achieve County goals.*

### Organizational Functions

The Administration Department assists the Board of County Commissioners (BOCC) in formulating policies and goals and supervises the daily operations of the County in order to implement the BOCC directives and achieve County goals. General tasks for Administration include; consistent application of policies and procedures, assist in monitoring the strategic plan, facilitate communication between departments and encourage teamwork, and provide information to departments, citizens and BOCC.

### 2003 Accomplishments

- ◆ Adopted the 2003 Strategic Plan.
- ◆ Completed 30 Road Underpass Project.
- ◆ Completion of the new Community Services Building which houses the Department of Human Services and the Health Department.
- ◆ Formed new committees made up of employees from various departments to increase communications and share information on Finance, Purchasing, Computer, and Communications.
- ◆ Worked with the Benefits Committee toward becoming self-insured.

# ADMINISTRATION

## 2003 Accomplishments

- ◆ Worked with the Compensation Committee and the Compensation Sub-Committee to bring employees within 2.9% of market this year.
- ◆ Supported the Safety Team and the Wellness Committees in developing ideas to help employees be more safe and to work toward more healthy lifestyles.
- ◆ Hosted the first ever Mesa County Economic Development Forum which was held in partnership with the Chamber, GJEP, the Incubator, and the municipalities. Follow up steps are being taken to continue this work.
- ◆ Work with the Grand Valley Transit System in ongoing to provide bus services for citizens.
- ◆ Long Family Memorial Park Final Design was introduced.
- ◆ Policy use for the Government Access Channel (Channel 12) was adopted and excellent programming for this channel on Mesa County Services continues.
- ◆ Continued to work with GOCO for grants to purchase development rights within the cooperative planning areas (buffer zones).
- ◆ EMS Cooperative Effort and Study was completed and results will be announced soon.
- ◆ Gateway Special District was formed for sewer, fire protection, police, and parks.
- ◆ HIPPA Compliance was implemented.

# ADMINISTRATION

## 2003 Accomplishments

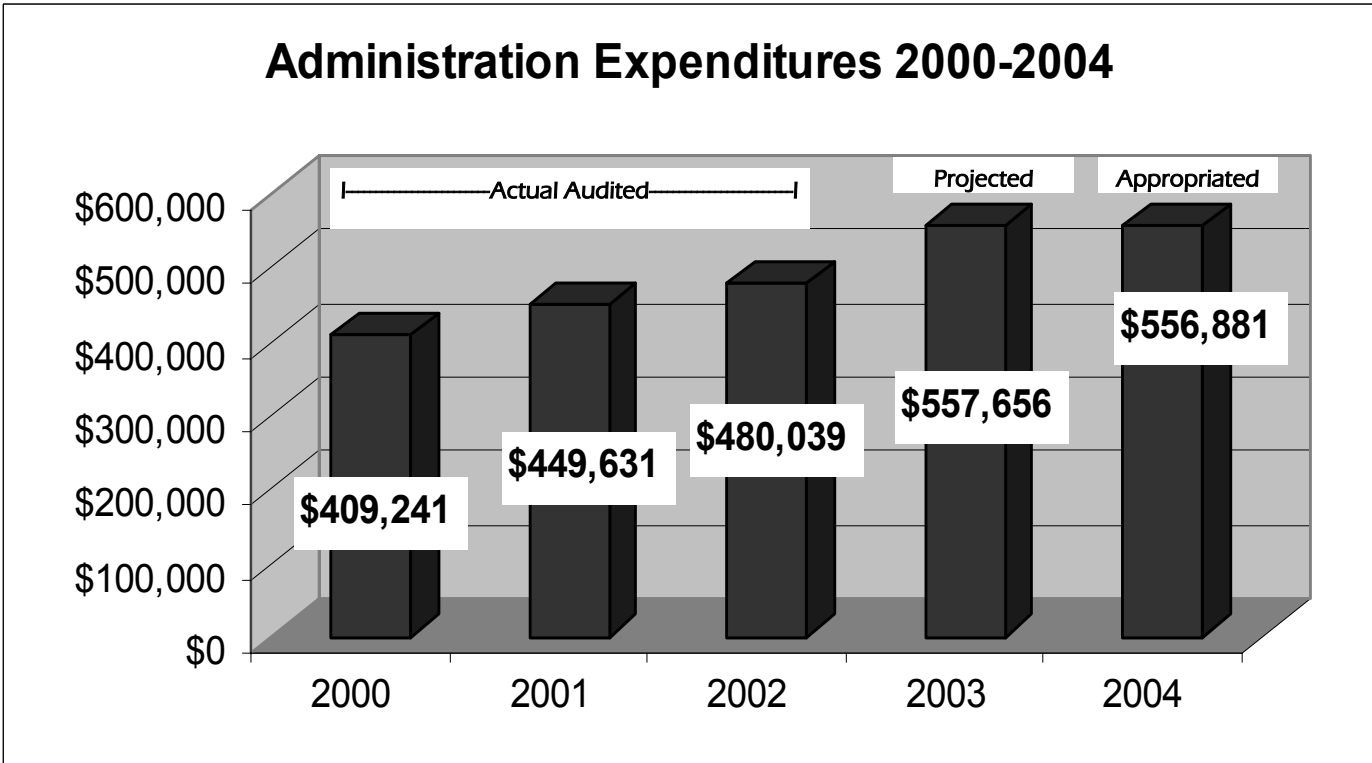
- ◆ Road Access Policy was adopted and a committee of citizens put together to review access issues.
- ◆ A stormwater study was conducted and a committee formed to review it.
- ◆ Use Tax Amnesty Program was implemented through the Treasurer's Office, and also an intergovernmental agreement for audits with the City of Grand Junction.
- ◆ Contributed toward building the Redlands Fire Station.
- ◆ Continued to work with the BLM and the Forest Service on Colorado Canyon Lands and healthy forests issues.
- ◆ Loma/Mack Rural Community Plan Kickoff.

## 2004 Goals & Projects

- ◆ Update land development code.
- ◆ Address land use and transportation access needs for all income levels.
- ◆ Participate in efforts that will increase employment opportunities and compensation packages so that the average per capita income (APCI) in Mesa County is brought in line with the national average, and the number of employed with health insurance is increased.
- ◆ Encourage intergovernmental and private partnerships to help achieve the County mission.
- ◆ Develop strategic and processes to identify and meet the changing expectations of county government by its many constituents.

## ADMINISTRATION MANAGING DEPARTMENT: BOARD OF COUNTY COMMISSIONERS

<u>Revenues</u>	← Actual Audited	→	Projected	Budget	
	2000	2001	2002	2003	2004
Department Generated	\$0	\$1,000	\$0	\$0	\$0
General Support Required *	\$409,241	\$448,631	\$480,039	\$557,656	\$556,881
<b>Total Revenues</b>	\$409,241	\$449,631	\$480,039	\$557,656	\$556,881
* Taxes, Transfers or Fund Balance					
<u>Expenditures</u>					
Personnel	\$327,463	\$358,375	\$365,055	\$469,721	\$413,058
Operating	\$81,778	\$91,256	\$114,984	\$87,935	\$143,823
Capital Outlay	\$0	\$0	\$0	\$0	\$0
<b>Total Expenditures</b>	\$409,241	\$449,631	\$480,039	\$557,656	\$556,881
<b>Authorized Personnel (FTE's)</b>	6.00	6.00	6.00	7.00	6.00



## COUNTY ATTORNEY

*~Our Mission~*

*To provide comprehensive legal support to the Board of County Commissioners and all other appointed and elected officials of Mesa County and to prosecute dependency and neglect, mental health, and alcohol cases for the people of the State of Colorado in the best interests of children, citizens, and resources of the county.*

### Organizational Function

The office of the County Attorney provides comprehensive legal support to the Board of County Commissioners (BOCC) and all other appointed and elected officials. The department also has the responsibility to prosecute dependency and neglect, mental health commitments and alcohol, developmental disability and drug abuses impositions of the people of the State of Colorado in the best interests of children, citizens and resources of the County. Additional duties include representing the BOCC, its officers and all elected officials in civil matters and drafting or reviewing County contracts.

### 2004 Goals

- ◆ Provide effective legal assistance and guidance to the Board on the issues of AFT Density Criteria and Code Enforcement, with the idea of resolving and implementing these matters during the next year.
- ◆ Keep abreast of and provide opinions and guidance to the Board on effective and economical implementation of the Federal Help America Vote Act (HAVA) within the statutorily required time.
- ◆ Deal effectively with any proposed Grand Junction Watershed Protection Ordinance and /or any agreements which may be implemented to support the concept of watershed protection.
- ◆ Continue to provide effective legal assistance and guidance regarding implementation and administration of the Persigo Agreement, including the possible integration of the Clifton Sanitation District #2 into the Persigo System.
- ◆ Monitor and implement the major changes to the mental health and alcohol commitment and treatment systems currently anticipated by the reduction in service by the State and the increase in service by local entities, including Colorado West Mental Health Services, Hilltop, and MCDHS.
- ◆ Continue to inform the Board of and provide assistance to the Board on internal and external issues of importance to the Board and the County. It is expected that the County Attorney's Office will continue to anticipate problems and/or issues and react and/or bring such matters to the Board in a pre-emptive manner.
- ◆ Continue to carry out and fulfill all statutory duties applicable to the County Attorney and the County's Office and all assignments from the Board.
- ◆ Continue to develop and maintain an effective, high quality staff and to provide effective legal assistance and opinions to the Board on all matters which are assigned, or which may come before the Board.

## COUNTY ATTORNEY MANAGING DEPARTMENT: BOARD OF COUNTY COMMISSIONERS

**Revenues**

Department Generated  
General Support Required \*

**Total Revenues**

\* Taxes, Transfers or Fund Balance

**Expenditures**

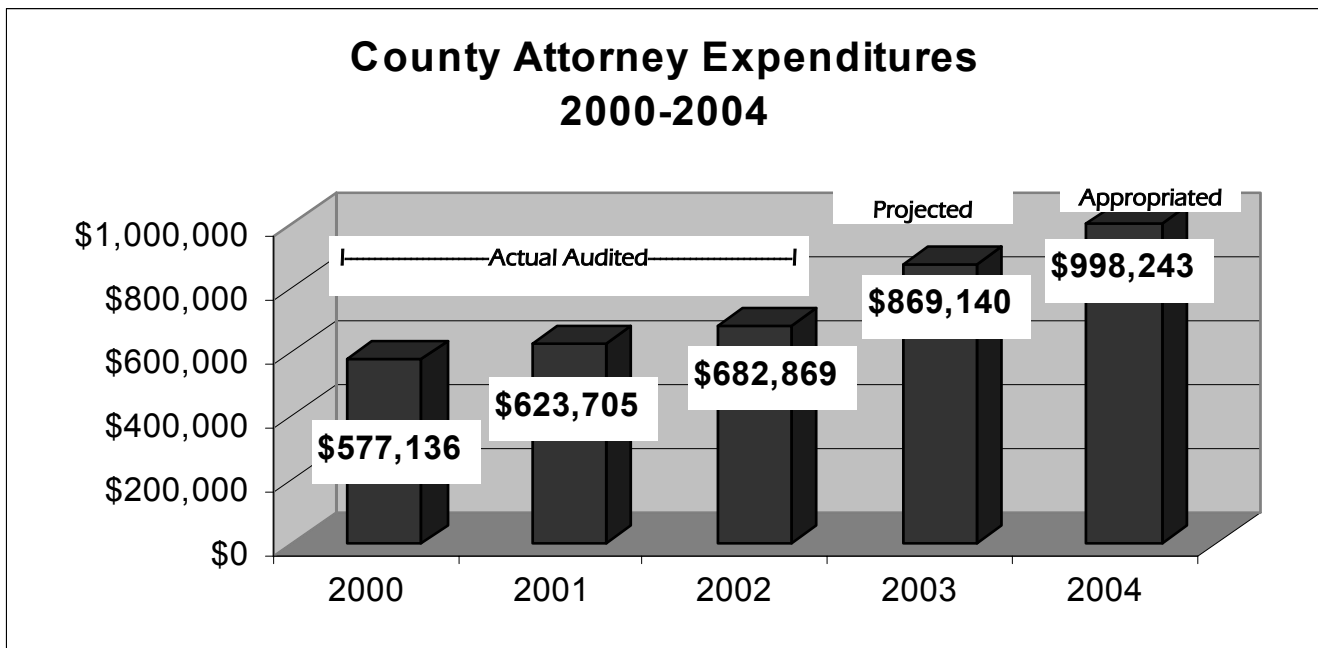
Personnel  
Operating  
Capital Outlay

**Total Expenditures**

	Actual Audited			Projected	Budget
	2000	2001	2002	2003	2004
Department Generated	\$135,855	\$122,178	\$156,698	\$236,868	\$207,260
General Support Required *	\$441,281	\$501,527	\$526,171	\$632,272	\$790,983
<b>Total Revenues</b>	<b>\$577,136</b>	<b>\$623,705</b>	<b>\$682,869</b>	<b>\$869,140</b>	<b>\$998,243</b>
Personnel	\$486,311	\$530,379	\$603,871	\$775,695	\$756,712
Operating	\$90,326	\$93,201	\$77,850	\$93,445	\$241,531
Capital Outlay	\$499	\$125	\$1,148	\$0	\$0
<b>Total Expenditures</b>	<b>\$577,136</b>	<b>\$623,705</b>	<b>\$682,869</b>	<b>\$869,140</b>	<b>\$998,243</b>

**Authorized Personnel (FTE's)**

9.00      9.00      9.50      12.00      12.00



## FINANCIAL SERVICES

*~Our Mission~*

*To maintain a governmental accounting and financial reporting system which provides accurate, useful and timely financial information to both external users and internal management and to maintain an adequate system of internal controls to protect the County's assets and to monitor the receipt and disbursement of public funds in compliance with statutory requirements.*

### Organizational Function

The budget element develops an annual financial plan that depicts anticipated revenues and expenditures, which supports the strategic plan and provides services to the public. Analysis and recommendations on policies, goals and operations, presenting supplemental budget appropriations and examining significant budget variances are part of the daily operations. The finance component manages internal control systems for protecting assets, coordinates debt and financing of projects, monitors cash flow and investments, administers payroll and accounts payable function, provides analysis and recommendations on strategic financial policies or goals, monitors the receipt and disbursement of public funds and maintains an accounting and financial reporting system to provide accurate, useful and timely financial information.

### 2003 Accomplishments

- ◆ Awarded the Government Finance Officer's Association's Certificate of Achievement for Excellence in Financial Reporting
- ◆ Earned the Government Finance Officer's Association's Distinguished Budget Presentation Award
- ◆ Implemented Government Accounting Standards Board Statement #34 Reporting Model a year earlier than required
- ◆ Developed Finance Policy and Procedures adopted by the Board of County Commissioners

### 2004 Goals

- ◆ Select and implement a new Finance System
- ◆ Continue developing Finance policies and procedures for the Board of County Commissioners' approval
- ◆ Initiate development of County-wide performance measures

## FINANCIAL SERVICES MANAGING DEPARTMENT: ADMINISTRATION

**Revenues**

Department Generated  
General Support Required \*

**Total Revenues**

\* Taxes, Transfers or Fund Balance

**Expenditures**

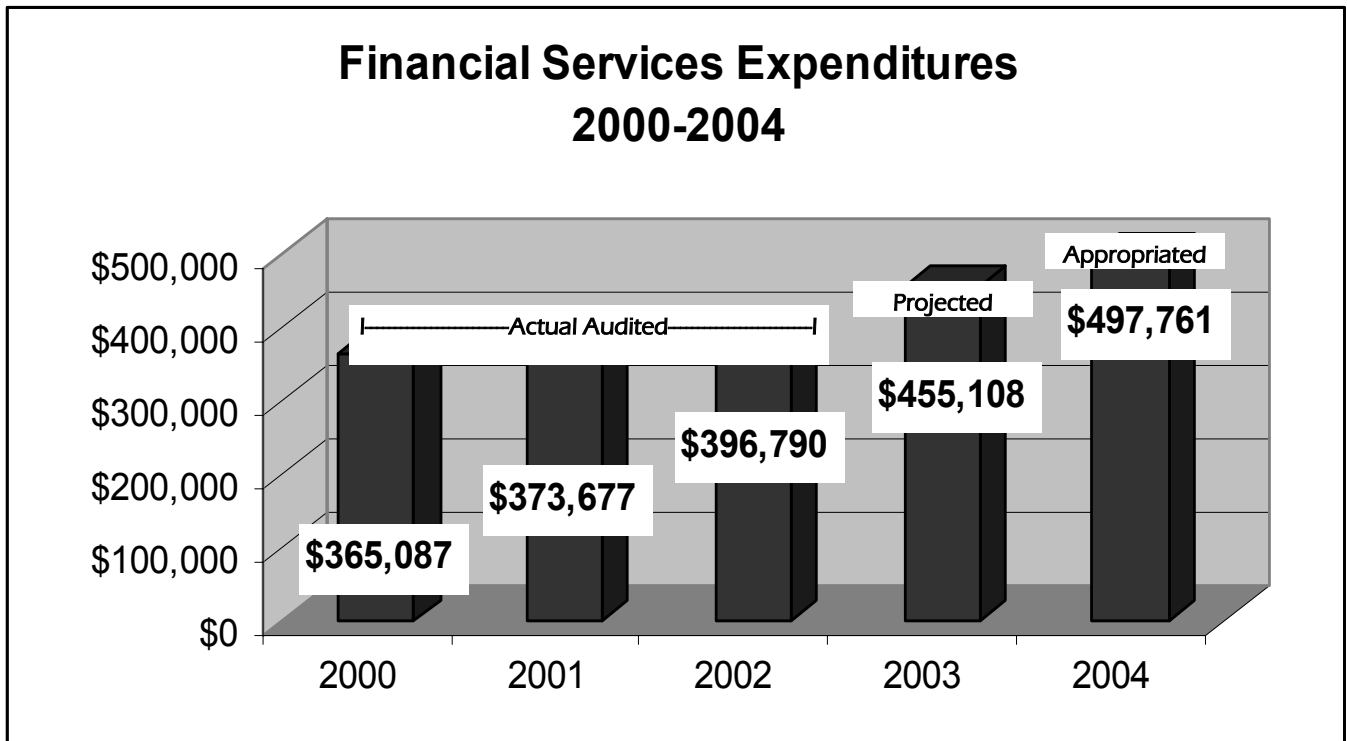
Personnel  
Operating  
Capital Outlay

**Total Expenditures**

	← 2000	Actual Audited 2001	2002 →	Projected 2003	Budget 2004
Department Generated	\$4,874	\$3,898	\$3,581	\$2,720	\$3,500
General Support Required *	\$360,213	\$369,779	\$393,209	\$452,388	\$494,261
<b>Total Revenues</b>	<b>\$365,087</b>	<b>\$373,677</b>	<b>\$396,790</b>	<b>\$455,108</b>	<b>\$497,761</b>
Personnel	\$261,683	\$298,709	\$298,743	\$347,863	\$371,806
Operating	\$102,905	\$74,787	\$98,047	\$107,245	\$125,955
Capital Outlay	\$499	\$181	\$0	\$0	\$0
<b>Total Expenditures</b>	<b>\$365,087</b>	<b>\$373,677</b>	<b>\$396,790</b>	<b>\$455,108</b>	<b>\$497,761</b>

**Authorized Personnel (FTE's)**

5.50                      6.00                      6.00                      6.00                      6.00



## FACILITIES & PARKS

*~Our Mission~*

*To provide, protect and maintain Mesa County's physical assets such as buildings, properties, equipment to ensure a safe working environment in a cost-effective manner for its employees and citizens.*

### Organizational Function

The Facilities and Parks Division protects and maintains buildings, properties and equipment, administers janitorial and other third party contractors for general services, directs maintenance of outlying parks and grounds, provides major construction oversight and minor construction services, executes leases and partners with local entities in planning and providing recreational opportunities with parks, trails and public sites.

### 2003 Accomplishments

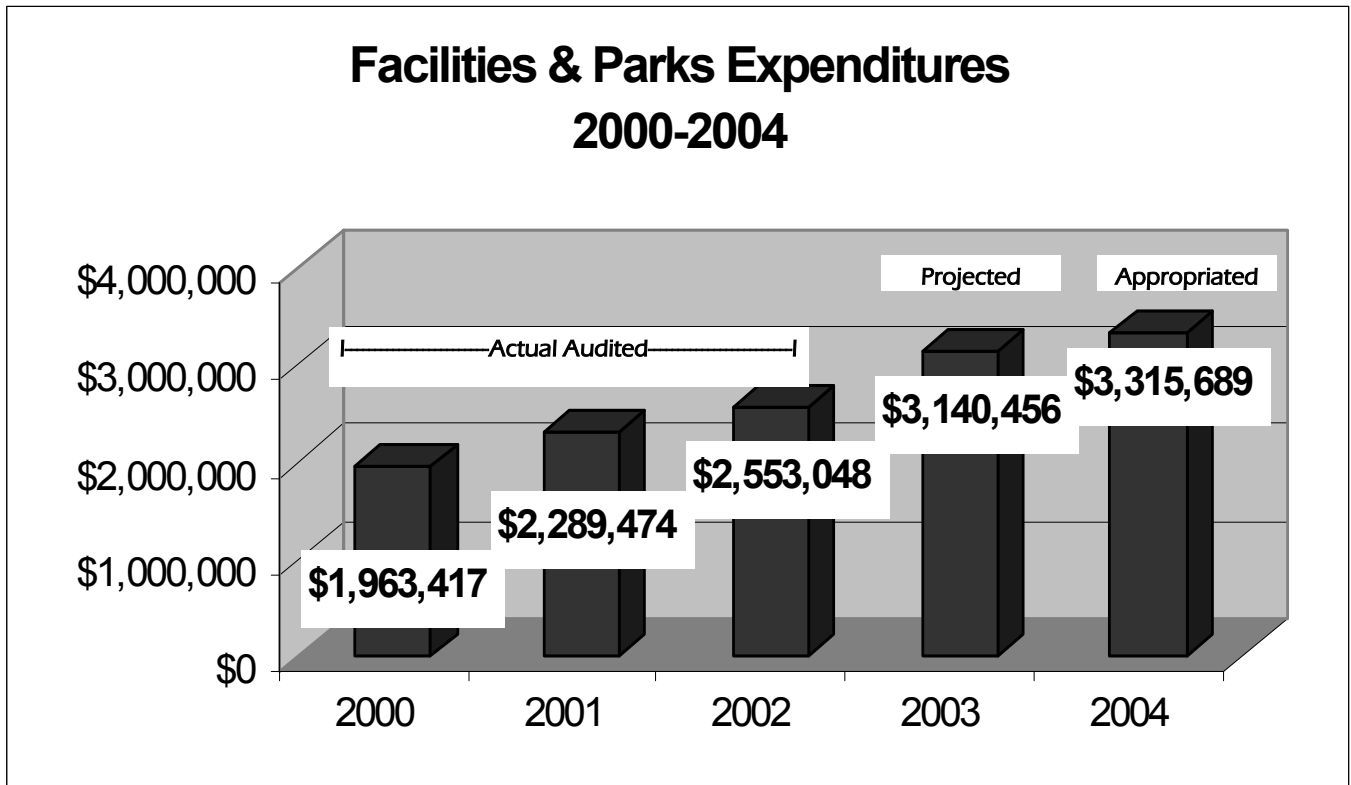
- ◆ Completed 81,000 sq ft Community Services Building located at 510 29 1/2 Road. This building co-locates the Departments of Human Services and Health along with ancillary offices for Criminal Justice Services, Colorado West Mental Health and Probation. The facility was dedicated November 15, 2003.
- ◆ Held a series of public meetings regarding the future construction of Long Family Memorial Park located at 317 F Road. Final construction drawings have been prepared for Board consideration in 2004. Drawings are based on desires of neighbors and East Grand Valley residents.
- ◆ Mesa County, in partnership with the City of Grand Junction, elected to build a 202 vehicle parking garage adjacent to downtown City and County administrative buildings. Project is underway with a Spring, 2004 completion date.

### 2004 Goals & Project Highlights

- ◆ With construction projects nearly complete, focus more staff effort on preventative maintenance and implementation of standards/policies for maintenance, construction, and remodeling/replacement of County equipment and facilities.
- ◆ Fill vacancies in Department, in order to be fully staffed and provide a broader level of service and responsiveness to department customers. Increase efforts to provide more and consistent information regarding building and equipment to the various departments.
- ◆ Begin first Board-designated phase of construction at Long Family Memorial Park based on capital resources available. Phase I estimated at approximately \$1.2 million.

## FACILITIES & PARKS MANAGING DEPARTMENT: ADMINISTRATION

	Actual Audited			Projected 2003	Budget 2004
	2000	2001	2002		
<b>Revenues</b>					
Department Generated	\$115,120	\$88,891	\$98,822	\$72,369	\$94,676
General Support Required *	\$1,848,297	\$2,200,583	\$2,454,226	\$3,068,087	\$3,221,013
<b>Total Revenues</b>	<b>\$1,963,417</b>	<b>\$2,289,474</b>	<b>\$2,553,048</b>	<b>\$3,140,456</b>	<b>\$3,315,689</b>
<small>* Taxes, Transfers or Fund Balance</small>					
<b>Expenditures</b>					
Personnel	\$667,676	\$749,772	\$844,006	\$899,852	\$931,538
Operating	\$1,114,642	\$1,430,353	\$1,476,560	\$1,840,604	\$2,042,196
Capital Outlay	\$181,099	\$109,349	\$232,482	\$400,000	\$341,955
<b>Total Expenditures</b>	<b>\$1,963,417</b>	<b>\$2,289,474</b>	<b>\$2,553,048</b>	<b>\$3,140,456</b>	<b>\$3,315,689</b>
<b>Authorized Personnel (FTE's)</b>	<b>14.00</b>	<b>15.00</b>	<b>15.00</b>	<b>16.00</b>	<b>16.00</b>



# INFORMATION MANAGEMENT DEPARTMENT

*~Our Mission~*

*To work as a team to provide leadership, service, and support to County users in telecommunications, system analysis, and records management to increase the efficiency and/or effectiveness of County services.*

## Organizational Function

The department develops, analyzes and recommends computer hardware or software for various applications, implements networks, provides technical support, training and manages automated information and telecommunications systems.

## 2003 Accomplishments

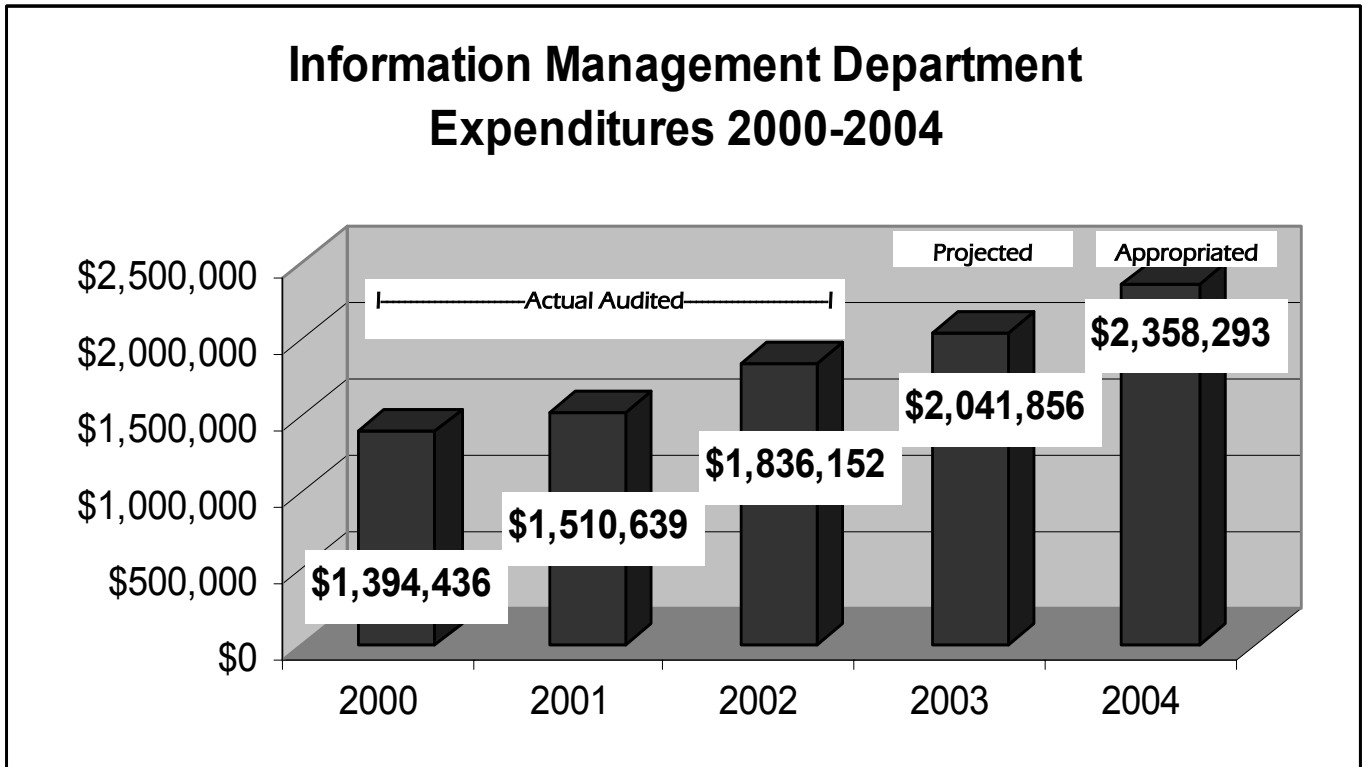
- ◆ Storage Area Network installed
- ◆ Health Department moved

## 2004 Goals & Projects

- ◆ Implement a new Finance System
- ◆ Justice Center and Sheriff's Office switch upgrade
- ◆ Spillman upgrade
- ◆ Sheriff's Office cabling upgrade

## INFORMATION MANAGEMENT DEPARTMENT MANAGING DEPARTMENT: ADMINISTRATION

	Actual Audited			Projected 2003	Budget 2004
	2000	2001	2002		
<b><u>Revenues</u></b>					
Department Generated	\$10,986	\$5,737	\$42,636	\$57,888	\$62,500
General Support Required *	\$1,383,450	\$1,504,902	\$1,793,516	\$1,983,968	\$2,295,793
<b>Total Revenues</b>	<b>\$1,394,436</b>	<b>\$1,510,639</b>	<b>\$1,836,152</b>	<b>\$2,041,856</b>	<b>\$2,358,293</b>
* Taxes, Transfers or Fund Balance					
<b><u>Expenditures</u></b>					
Personnel	\$918,212	\$1,056,694	\$1,144,179	\$1,294,022	\$1,401,130
Operating	\$420,834	\$453,543	\$677,638	\$743,974	\$939,163
Capital Outlay	\$55,390	\$402	\$14,335	\$3,860	\$18,000
<b>Total Expenditures</b>	<b>\$1,394,436</b>	<b>\$1,510,639</b>	<b>\$1,836,152</b>	<b>\$2,041,856</b>	<b>\$2,358,293</b>
<b>Authorized Personnel (FTE's)</b>	<b>16.00</b>	<b>16.00</b>	<b>16.00</b>	<b>18.00</b>	<b>18.00</b>



## PERSONNEL

*~Our Mission~*

*To provide human resource services to employees, public and private entities and all other citizens in order that the County's workplace is free from any discriminatory practices and all personnel actions are fair and equitable and to provide staff assistance to management to assure successful administration and execution of personnel policies, procedures, and programs.*

### Organizational Function

The Personnel Division provides services to employees to assure workplace practices are free from any discriminatory practices and all personnel transactions are fair and equitable. Additional duties include administration policies, procedures, benefits and merit appraisal system, maintaining files and records and conducting recruiting, training and recognition programs.

### 2003 Accomplishments

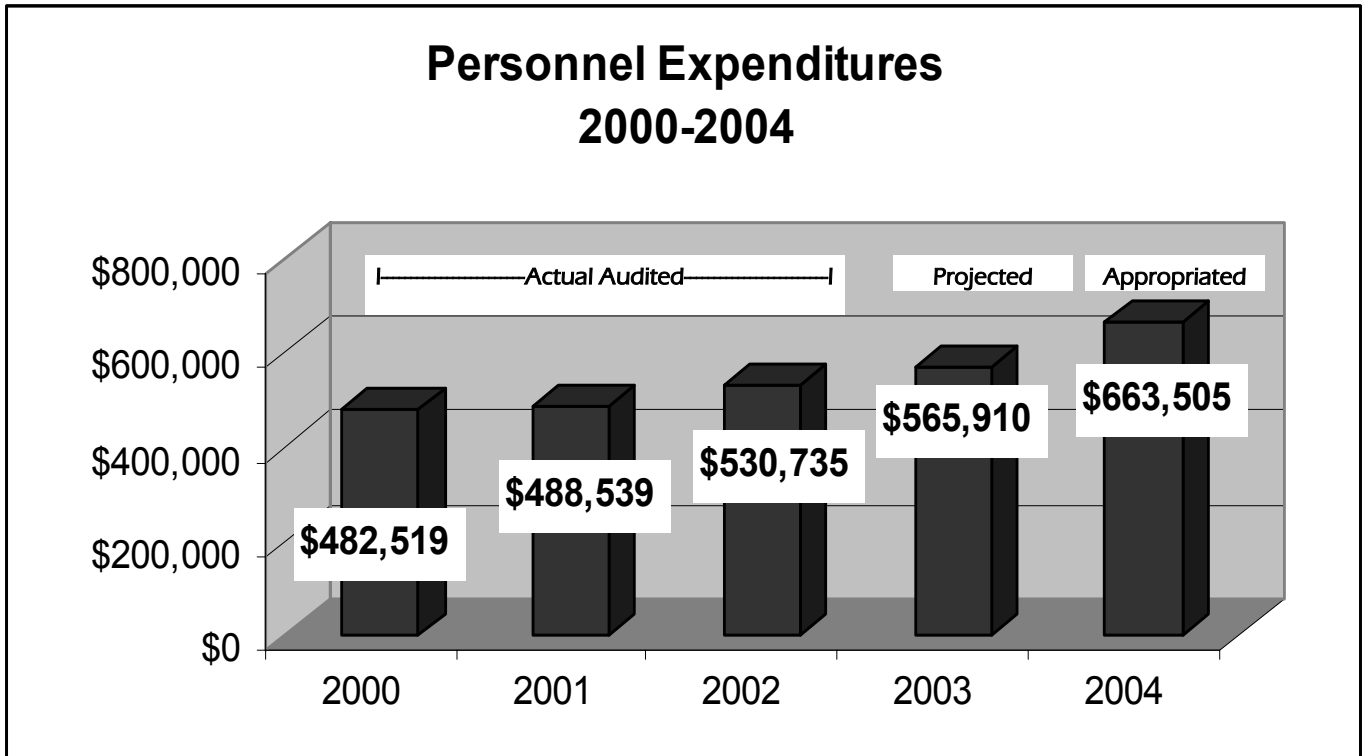
- ◆ Entered into a "Shared Funding" agreement (partial self-funded plan) with Rock Mountain HMO for group health insurance
- ◆ Conducted market study on County jobs
- ◆ Developed County HIPPA policies in compliance with State and Federal regulations and conducted employee training on privacy issues
- ◆ Provided supervisory training for newly promoted managers

### 2004 Goals & Projects

- ◆ Maintain health insurance premiums at '03 rates; assist with new plan designs and educate employees on wise usage of the health insurance benefit
- ◆ Establish a formal Wellness Program for County employees emphasizing healthy lifestyles and providing incentives for healthy behaviors
- ◆ Assist managers in resolving work related issues before they become liabilities
- ◆ Select and implement new HR computer system
- ◆ Coordinate a combined employee recognition and awards function working with the Mesa County Employees Association

## PERSONNEL MANAGING DEPARTMENT: ADMINISTRATION

	Actual Audited			Projected 2003	Budget 2004
	2000	2001	2002		
<b>Revenues</b>					
Department Generated	\$53,123	\$53,505	\$58,985	\$0	\$0
General Support Required *	\$429,396	\$435,034	\$471,750	\$565,910	\$663,505
<b>Total Revenues</b>	<b>\$482,519</b>	<b>\$488,539</b>	<b>\$530,735</b>	<b>\$565,910</b>	<b>\$663,505</b>
* Taxes, Transfers or Fund Balance					
<b>Expenditures</b>					
Personnel	\$296,352	\$334,854	\$358,131	\$432,200	\$437,043
Operating	\$186,167	\$153,241	\$172,604	\$133,710	\$226,462
Capital Outlay		\$444	\$0	\$0	\$0
<b>Total Expenditures</b>	<b>\$482,519</b>	<b>\$488,539</b>	<b>\$530,735</b>	<b>\$565,910</b>	<b>\$663,505</b>
<b>Authorized Personnel (FTE's)</b>	<b>6.00</b>	<b>6.00</b>	<b>6.00</b>	<b>8.00</b>	<b>8.00</b>



## PURCHASING

*~Our Mission~*

*We are responsible for the acquisition of high quality goods and services to assure that all County departments receive the best value for their budgeted funding in an open and fair bidding environment which encourages the greatest number of vendors to compete for County contract opportunities.*

### Organizational Function

Purchasing functions involve acquiring goods and services for all departments to assure fair and open bidding is achieved to provide the best value for each dollar expended, managing an inventory of supplies, mail services, travel services contracts and a portfolio of pre-qualified service providers and preparing and issuing formal bid documents.

### 2003 Accomplishments

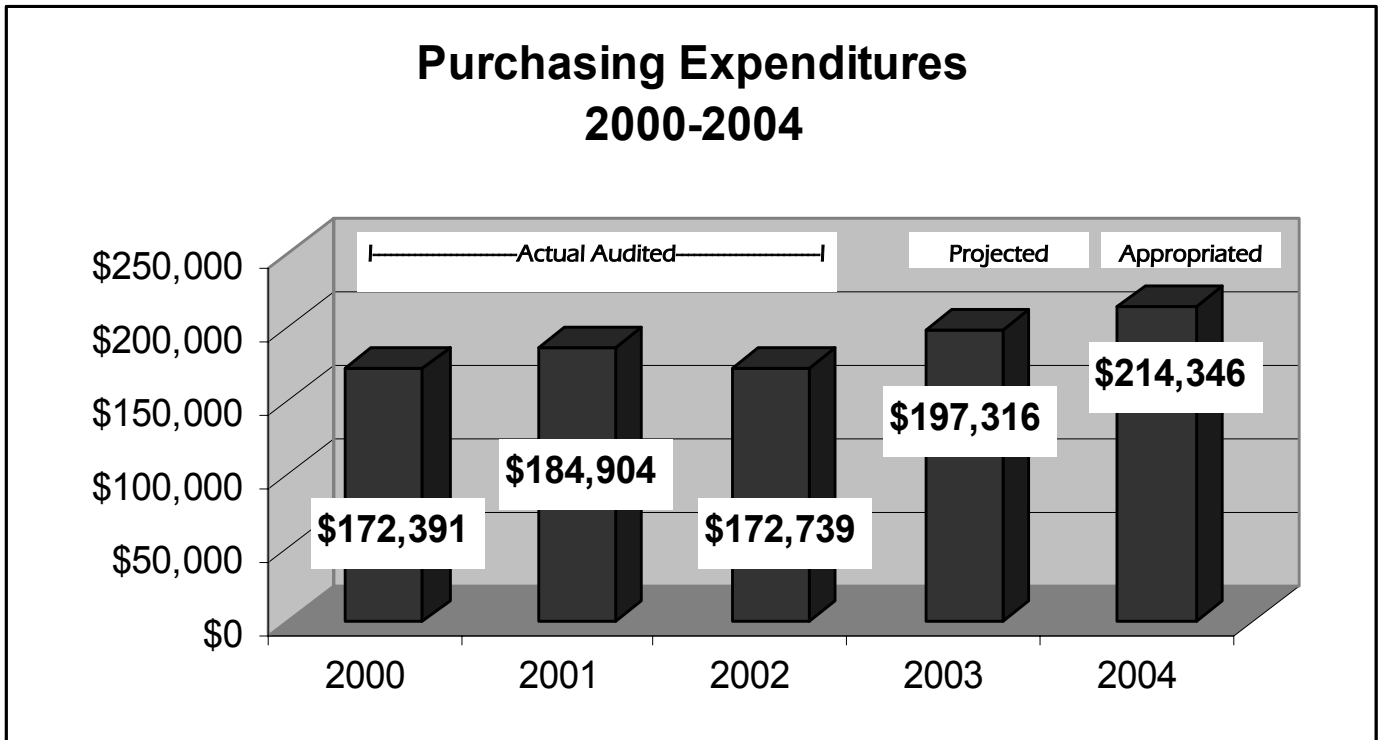
- ◆ Policies and procedures were completely revised and revisions were approved by the Board of County Commissioners (BOCC) in September 2003.
- ◆ Successfully worked with local entities (i.e. School District 51, City of Grand Junction, Mesa State College) in some cooperative purchasing efforts.
- ◆ Procurement Card Program graduated from a trial program to a wide spread County program.

### 2004 Goals

- ◆ Follow through on the implementation of the new Purchasing Policies.
- ◆ Support the Finance Division's efforts to acquire a new Finance Software System in 2004.

## PURCHASING MANAGING DEPARTMENT: ADMINISTRATION

	Actual Audited			Projected 2003	Budget 2004
	2000	2001	2002		
<b>Revenues</b>					
Department Generated	\$60	\$22	\$10	\$583	\$0
General Support Required *	\$172,331	\$184,882	\$172,729	\$196,733	\$214,346
<b>Total Revenues</b>	<b>\$172,391</b>	<b>\$184,904</b>	<b>\$172,739</b>	<b>\$197,316</b>	<b>\$214,346</b>
* Taxes, Transfers or Fund Balance					
<b>Expenditures</b>					
Personnel	\$159,630	\$171,111	\$160,344	\$185,173	\$198,055
Operating	\$12,342	\$13,793	\$12,395	\$12,143	\$16,291
Capital Outlay	\$419	\$0	\$0	\$0	\$0
<b>Total Expenditures</b>	<b>\$172,391</b>	<b>\$184,904</b>	<b>\$172,739</b>	<b>\$197,316</b>	<b>\$214,346</b>
<b>Authorized Personnel (FTE's)</b>	<b>3.00</b>	<b>3.00</b>	<b>3.00</b>	<b>4.00</b>	<b>4.00</b>



# RISK

*~Our Mission~*

*To protect Mesa County resources and assets on behalf of citizens, taxpayers, and employees by preventing or minimizing the adverse effects of a possible loss or exposure to loss.*

## Organizational Function

Managing the insurance programs to protect resources and assets by preventing or minimizing the adverse effects of a possible loss, development of safety and loss prevention programs and processing all insurance and worker's compensation claims are functions of Risk Management.

## 2003 Accomplishments

- ◆ Migrated to a greater level of self-insurance in the area of property and Errors & Omission liability. During 2003, the County had insurance coverage with a \$250,000 Self-Insured Retention, versus \$5,000 to \$25,000 deductible policies in previous years. The County's loss history supported this business decision.

## 2004 Goals

- ◆ In 2003 the County started a partially self-insured worker's compensation program and received a permit from the Colorado Department of Labor to be fully self-insured for Workers Compensation on December 30, 2003. The major goal for 2004 is to re-align workloads and responsibilities within Risk Management personnel to adjust to the additional workload that a self-insured Worker's Compensation program will involve.



## OTHER ADMINISTRATION

### Organizational Function

This cost center contains several expenditures times that are for the benefit of the entire County. Expenditures in this cost center include insurance, mail services, postage and contingencies for the General Fund. In addition, it contains expenditures for TABOR refund and contingencies for the County.

### 2004 Goals/Objectives

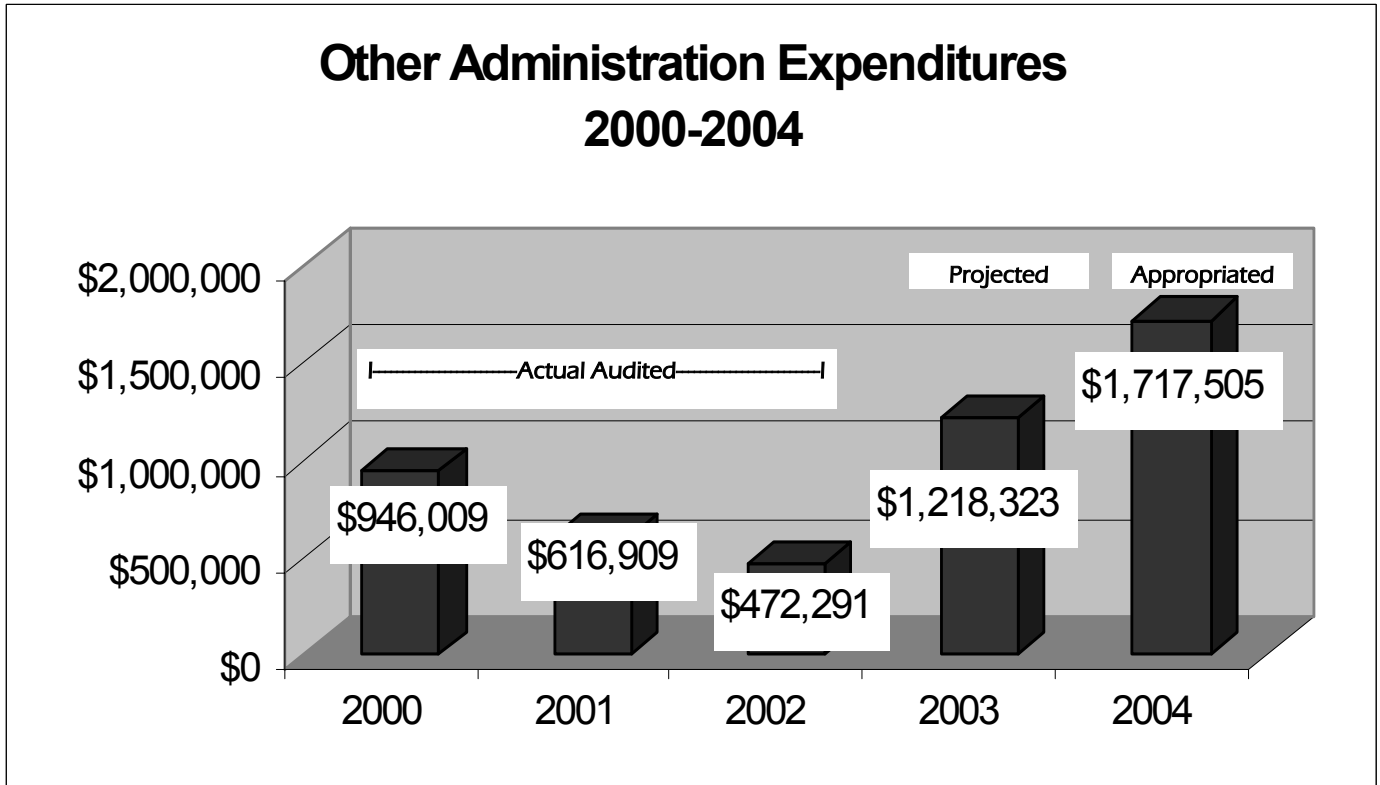
- ◆ To accurately allocate and maintain a ready reserve or contingency fund in the event of a County financial emergency

### Budget Highlights

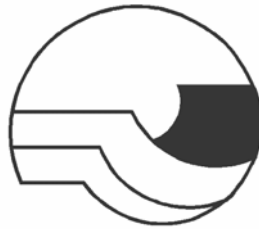
- ◆ Personnel contingency is recommended to cover potential costs of benefits, cash bonuses, market studies, and when conditions warrant, additional contingency for departments.

## OTHER ADMINISTRATION MANAGING DEPARTMENT: FINANCIAL SERVICES

	Actual Audited			Projected 2003	Budget 2004
	2000	2001	2002		
<b>Revenues</b>					
Department Generated	\$127,751	\$49,514		\$0	\$0
General Support Required *	\$818,258	\$567,395	\$472,291	\$1,218,323	\$1,717,505
<b>Total Revenues</b>	<b>\$946,009</b>	<b>\$616,909</b>	<b>\$472,291</b>	<b>\$1,218,323</b>	<b>\$1,717,505</b>
* Taxes, Transfers or Fund Balance					
<b>Expenditures</b>					
Personnel	\$36,187	\$39,008	(\$149,694)	\$60,000	\$139,987
Operating	\$909,822	\$577,901	\$621,985	\$1,158,323	\$1,577,518
Capital Outlay					
<b>Total Expenditures</b>	<b>\$946,009</b>	<b>\$616,909</b>	<b>\$472,291</b>	<b>\$1,218,323</b>	<b>\$1,717,505</b>
<b>Authorized Personnel (FTE's)</b>	0.00	0.00	0.00	0.00	0.00



**MESA COUNTY, COLORADO**



**THIS PAGE INTENTIONALLY LEFT BLANK**