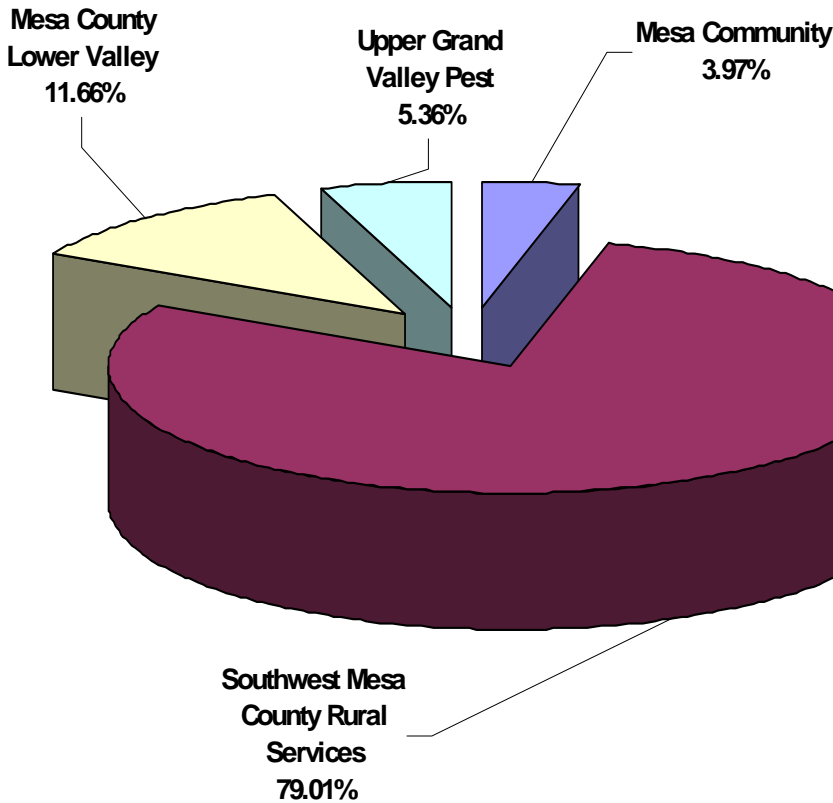


COMPONENT UNITS

2005 Expenditures

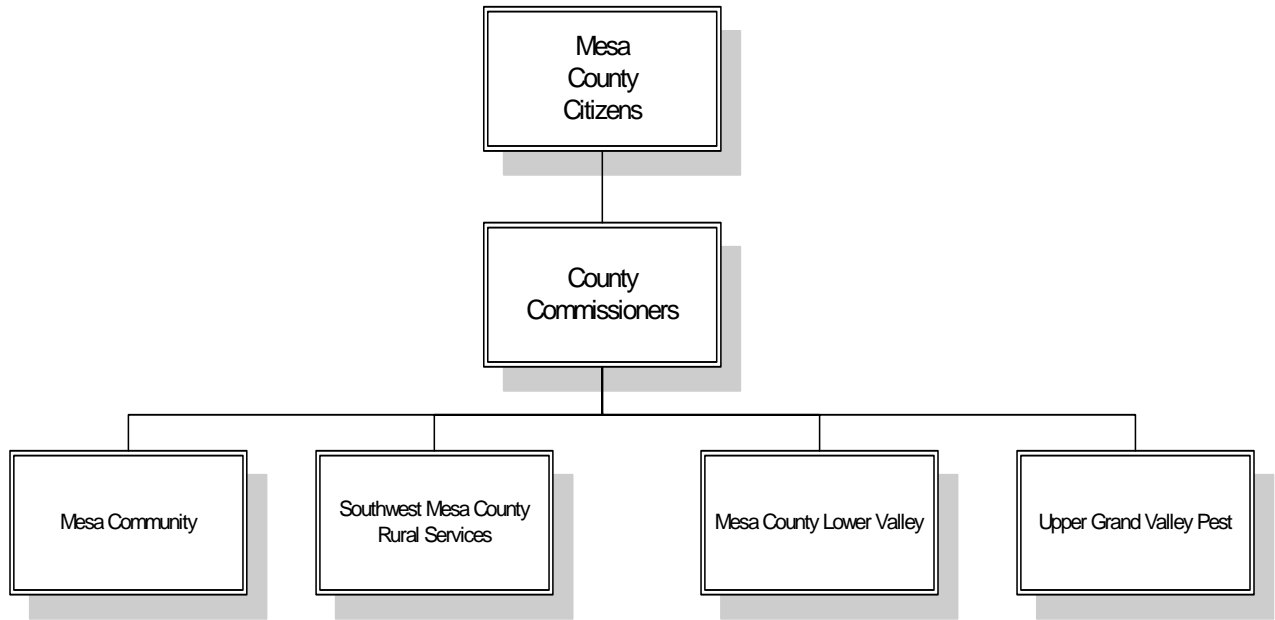


Functions

- Mesa County Fairgrounds
- TV Translator
- Fair Board
- Museum
- Small Parks & Trails
- Community Grants for Recreation & Parks

COST PER CITIZEN: 1 CENTS PER DAY

COMPONENT UNITS



COMPONENT UNITS

	Actual Audited			Projected 2004	Budget 2005
	2001	2002	2003		
<u>Revenues</u>					
Department Generated	\$0	\$5,075	\$257,061	\$90,345	\$362,089
General Support Required *	\$112	\$33,604	(\$202,585)	\$105,050	\$102,992
Total Revenues	\$112	\$38,679	\$54,476	\$195,395	\$465,081
* Taxes, Transfers or Fund Balance					
<u>Expenditures</u>					
Personnel	\$0	\$0	\$679	\$20,354	\$5,313
Operating	\$112	\$20,144	\$51,730	\$120,809	\$457,068
Capital Outlay	\$0	\$18,535	\$2,067	\$54,232	\$2,700
Total Expenditures	\$112	\$38,679	\$54,476	\$195,395	\$465,081
Authorized Personnel (FTE's)	0.00	0.00	0.00	0.00	0.00

Component Units

Expenditure Summary

	Actual Audited			Projected 2004	Budget 2005
	2001	2002	2003		
Mesa Community	\$0	\$18,535	\$9,705	\$18,130	\$18,445
Southwest Mesa County Rural Services	\$0	\$0	\$0	\$122,170	\$367,473
Mesa County Lower Valley	\$0	\$0	\$24,669	\$31,781	\$54,225
Upper Grand Valley Pest	\$112	\$20,144	\$20,102	\$23,314	\$24,938
Total	\$112	\$38,679	\$54,476	\$195,395	\$465,081

MESA COMMUNITY

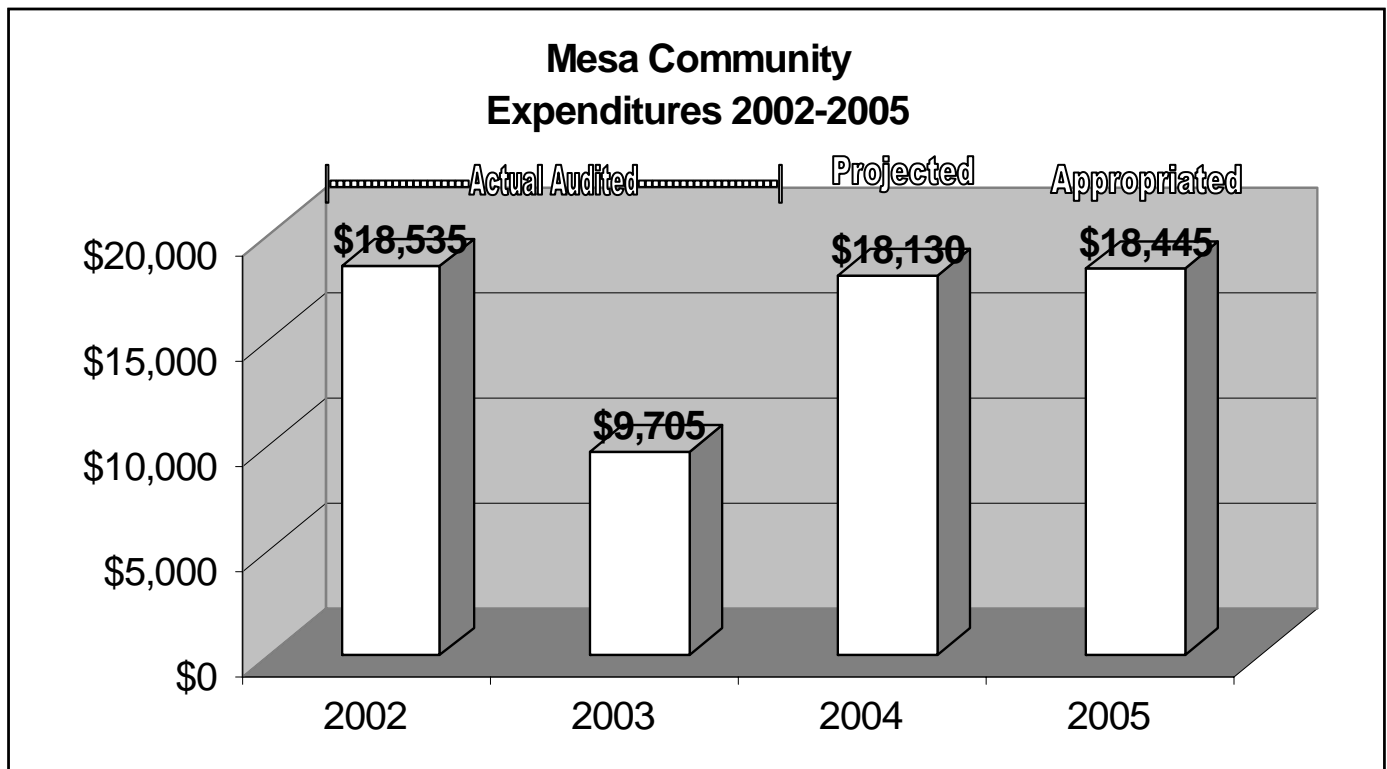
Organizational Function

This fund is a special district and accounts for the revenues and expenditures related to the community club activities in the Mesa taxing district. Revenue is derived from property tax from those who reside within the Mesa Community Center Public Improvement District (MCCPID) boundaries.

The Mesa County Board of County Commissioners constitutes the ex-officio board of the MCCPID. The MCCPID has an advisory board, elected by those residents within the district. This advisory board develops a recommended budget and manages the daily operations of the Community Center. Mesa County staff assist this advisory board with capital improvements, securing grant financing, payment of bills, collecting taxes, financial statements, the annual adoption/appropriation of budget and mill levy assessments. This district budget is not included in the Mesa County Budget but is shown here as a component unit of Mesa County.

MESA COMMUNITY MANAGING DEPARTMENT: COUNTY COMMISSIONERS

	← Actual Audited →			Projected	Budget
	2001	2002	2003	2004	2005
<u>Revenues</u>					
Department Generated	\$0	\$5,075		\$0	\$0
General Support Required *	\$0	\$13,460	\$9,705	\$18,130	\$18,445
al Revenues	\$0	\$18,535	\$9,705	\$18,130	\$18,445
* Taxes, Transfers or Fund Balance					
<u>Expenditures</u>					
Personnel	\$0	\$0	\$679	\$1,772	
Operating	\$0	\$0	\$6,959	\$12,126	\$15,745
Capital Outlay	\$0	\$18,535	\$2,067	\$4,232	\$2,700
Expenditures	\$0	\$18,535	\$9,705	\$18,130	\$18,445
Authorized Personnel (FTE's)		0.00	0.00	0.00	0.00



SOUTHWEST MESA COUNTY RURAL SERVICES

Organizational Function

On February 2, 2004, the Board of the Mesa County Rural Services Public Improvement District established a special revenue fund for the collection of property tax within the District.

On November 1, 2004, the resolution SWRSR 2004-003 defined the use of the four mills levied for sewer services. The four mills mill levy assessed in the District is not intended to pay for monthly user service fees of sewer or water operations.

On November 8, 2004 the Board of the Mesa County approved a resolution to establish an enterprise fund to account for monthly service fee collections for sewer and water.

The Southwest Mesa County Rural Services includes both operations for the PID and operations for sewer and water services.

This is a special district and accounts for all revenues and expenditures for the Southwest County Rural Services Public Improvement District. The two sources of revenue are property tax and charges for sanitary sewer services. The following may be added upon the proposed district reaching a population of 500; Law Enforcement, Fire Protection, Untreated Water Services and Parks and Recreation Improvement.



SOUTHWEST MESA COUNTY RURAL SERVICES

MANAGING DEPARTMENT: COUNTY COMMISSIONERS

Revenues

Department Generated
General Support Required *

al Revenues

* Taxes, Transfers or Fund Balance

Expenditures

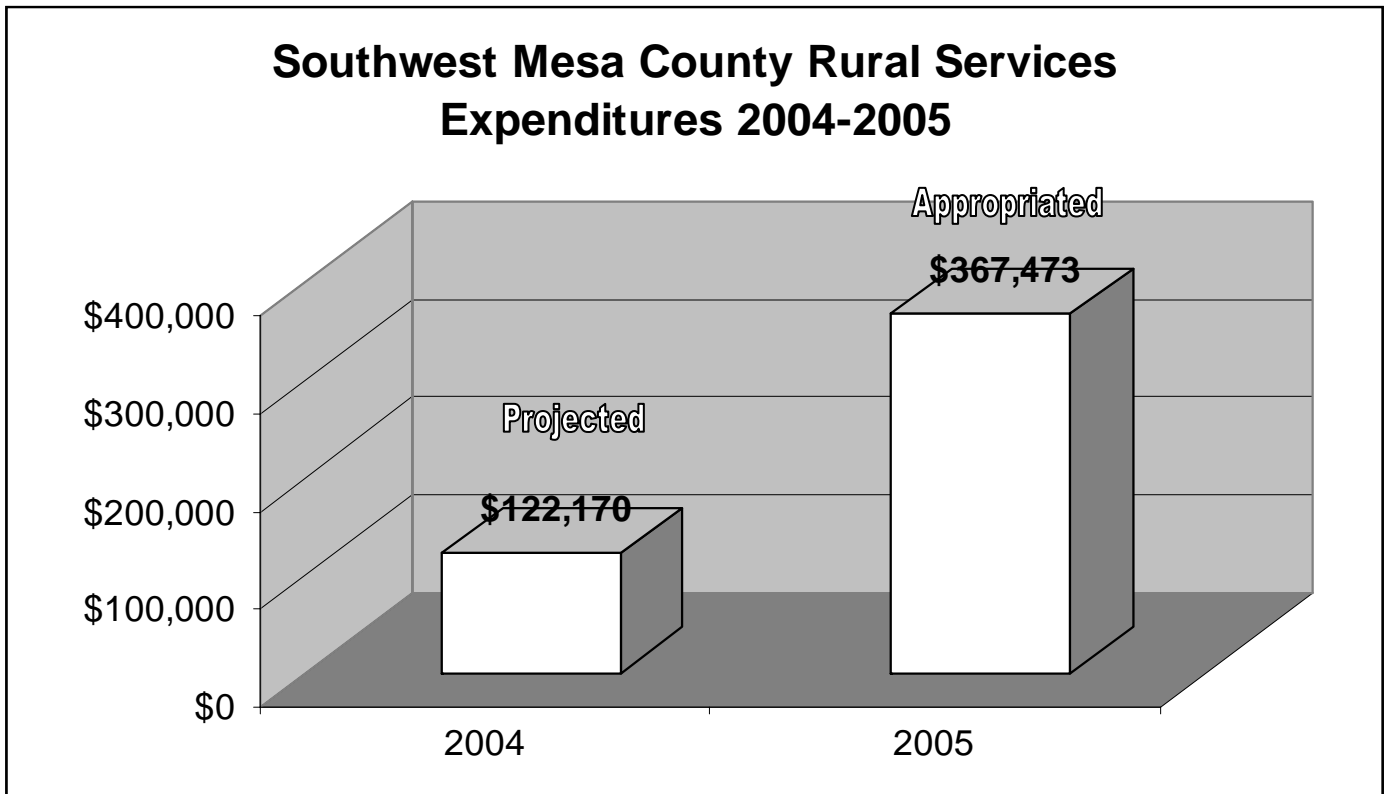
Personnel
Operating
Capital Outlay

Expenditures

Authorized Personnel (FTE's)

	Actual Audited			Projected	Budget
	2001	2002	2003	2004	2005
Department Generated				\$30,000	\$359,274
General Support Required *	\$0	\$0	\$0	\$92,170	\$8,199
al Revenues	\$0	\$0	\$0	\$122,170	\$367,473
Personnel					
Operating				\$72,170	\$367,473
Capital Outlay				\$50,000	
Expenditures	\$0	\$0	\$0	\$122,170	\$367,473

0.00 0.00 0.00 0.00 0.00



MESA COUNTY LOWER VALLEY

Organizational Function

On November 2, 2004, the citizens of the Mack Sanitation District voted to:

- Dissolve the Mack Sanitation District
- For the Mesa County Lower Valley Public Improvement District
- Exempt the newly formed Mesa County Lower Valley Public Improvement District from revenue and spending restrictions.

On December 6, 2004, the Mesa County Lower Valley Public Improvement District (MCLVPID) was established by resolution.

The MCLVPID was formed to provide sanitary sewer services and related improvements. The revenues include monthly service charges for sanitary sewer services and expenditures are for maintenance and operation of the sanitary sewer services.



MESA COUNTY LOWER VALLEY MANAGING DEPARTMENT: COUNTY COMMISSIONERS

Revenues

Department Generated
General Support Required *

al Revenues

* Taxes, Transfers or Fund Balance

Expenditures

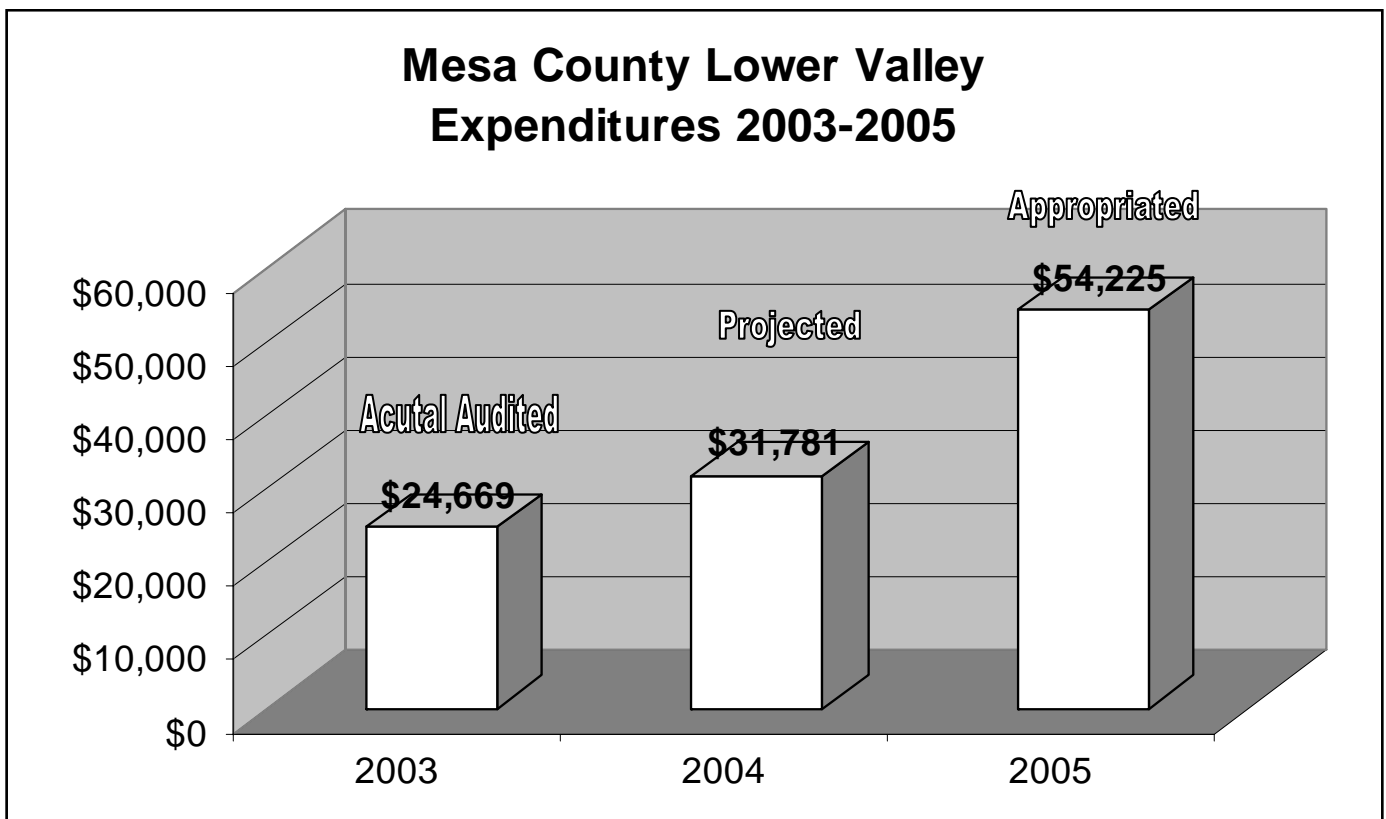
Personnel
Operating
Capital Outlay

Expenditures

Authorized Personnel (FTE's)

	Actual Audited			Projected	Budget
	2001	2002	2003	2004	2005
Department Generated			\$257,060	\$60,345	\$2,815
General Support Required *	\$0	\$0	(\$232,391)	(\$28,564)	\$51,410
al Revenues	\$0	\$0	\$24,669	\$31,781	\$54,225
Personnel					
Operating			\$24,669	\$31,781	\$54,225
Capital Outlay					
Expenditures	\$0	\$0	\$24,669	\$31,781	\$54,225

0.00 0.00 0.00 0.00 0.00



UPPER GRAND VALLEY PEST

Organizational Function

This fund is a special district and accounts for all revenues and expenditures for pest control in the Upper Grand Valley. Revenue is derived from property tax from those who reside within the Upper Grand Valley Pest District.

2004 Accomplishments

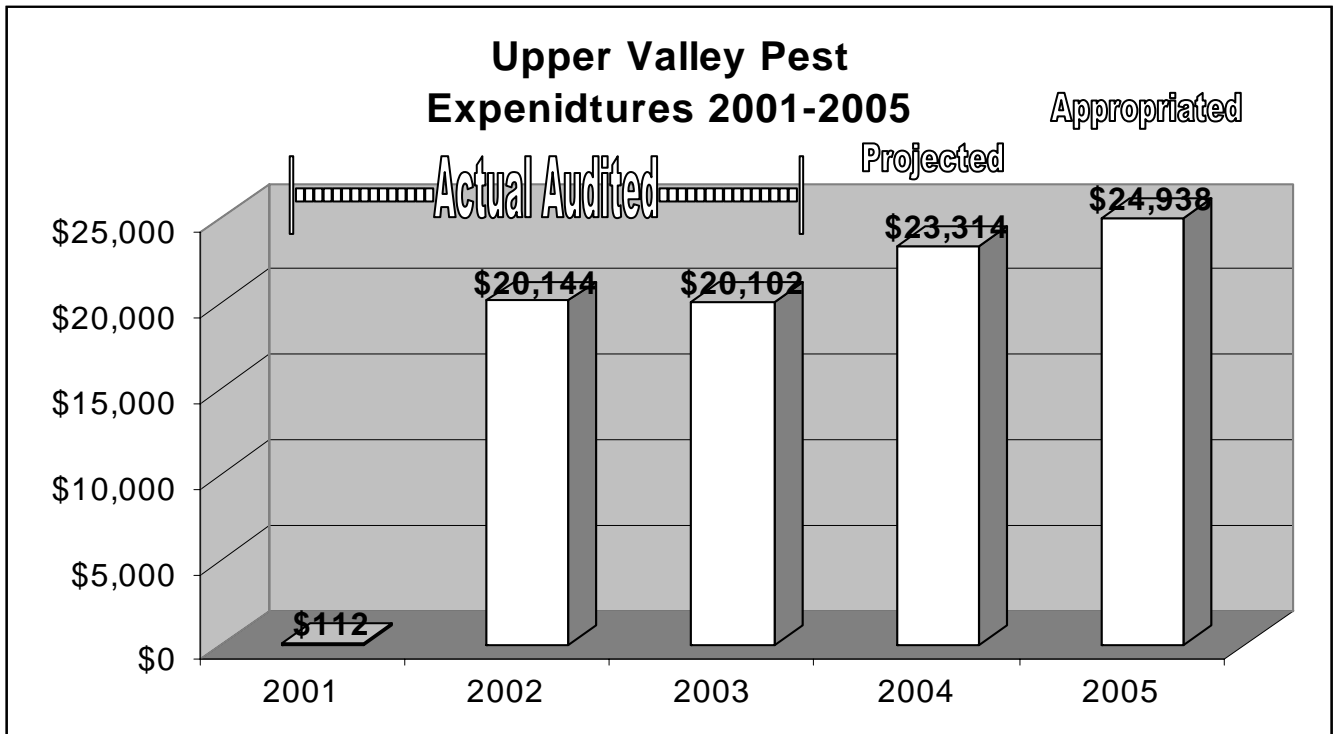
- ◆ Participated in the Japanese Beetle Advisory Committee
- ◆ Continued Fruit Tree Replacement Program, removing over 800 fruit trees
- ◆ Add the Japanese Beetle to the Pest District pest list

2005 Budget Goals

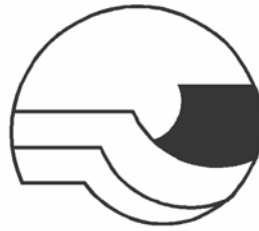
- ◆ Continue work on eradication of Japanese Beetle in Palisade
- ◆ Continue survey and detection of western cherry fruit fly, including increased monitoring of residential cherry trees in Palisade
- ◆ Begin a windshield survey for neglected trees within the district

UPPER GRAND VALLEY PEST MANAGING DEPARTMENT: COUNTY COMMISSIONERS

	Actual Audited			Projected 2004	Budget 2005
	2001	2002	2003		
Revenues					
Department Generated	\$0	\$0	\$1	\$0	\$0
General Support Required *	\$112	\$20,144	\$20,101	\$23,314	\$24,938
Total Revenues	\$112	\$20,144	\$20,102	\$23,314	\$24,938
* Taxes, Transfers or Fund Balance					
Expenditures					
Personnel	\$0	\$0		\$18,582	\$5,313
Operating	\$112	\$20,144	\$20,102	\$4,732	\$19,625
Capital Outlay	\$0	\$0			
Total Expenditures	\$112	\$20,144	\$20,102	\$23,314	\$24,938
Authorized Personnel (FTE's)	0.00	0.00	0.00	0.00	0.00



MESA COUNTY



THIS PAGE INTENTIONALLY LEFT BLANK