



The information in this Statistical Section of the Comprehensive Annual Financial Report is intended, when possible, to show trends in revenues, expenses, and fund balance over a ten-year period. Most of the data comes directly from the current and prior Mesa County reports. Data which comes from other sources is noted on the individual tables.

**Mesa County, Colorado
Net Assets
Last Ten Fiscal Years**

	2006	2005	2004	2003	2002	2001	2000	1999	1998	1997
Government Activities										
Invested in Capital Activities	\$ 165,577,706	\$ 155,412,354	\$ 150,633,987	\$ 64,018,368	\$ 45,343,458	not available prior to 2002				
Restricted										
Debt Service	446,002	555,499	455,269	974,924	876,250					
Emergency Reserve	2,590,764	2,046,677	1,988,693	1,988,693	1,931,662					
Workers Compensation Reserve	-	729,000	729,000	729,000	-					
Trust Accounts and Other Reserves	329,704	50,250	196,126	-	-					
Unrestricted	27,898,326	22,497,299	27,167,455	46,407,205	51,575,762					
Business-Type Activities										
Invested in Capital Activities	4,313,866	3,240,351	2,996,122	2,968,237	2,714,336					
Restricted	-	-	-	-	-					
Debt Service	-	-	-	-	-					
Emergency Reserve	-	-	-	-	-					
Landfill Closure/Post Closure	3,832,995	4,341,200	4,193,767	3,647,015	-					
Unrestricted	656,102	1,237,453	726,373	730,149	4,095,655					
Total Net Assets	\$ 205,645,465	\$ 190,110,083	\$ 189,086,792	\$ 121,463,591	\$ 106,537,123					

Source: Mesa County Financial Services (CAFR)

Mesa County, Colorado
GENERAL GOVERNMENT REVENUES BY SOURCE (1)
Last Ten Fiscal Years

Fiscal Year	Taxes	Special Assessments	Licenses and Permits	Inter-governmental	Charges for Services	Fines and Forfeitures	Miscellaneous	Contracts	Interest	Fee Accounts	Total
1997	\$ 31,961,063	\$ 116,352	\$ 832,862	\$ 33,582,394	\$ 2,380,927	\$ 45,191	\$ 347,313	\$ -	\$ 2,660,002	\$ 1,868,503	\$ 73,794,607
1998	34,830,975	-	906,724	23,281,637	3,105,812	48,662	562,436	-	2,927,739	2,313,994	67,977,979
1999	36,810,818	-	1,047,527	26,861,268	2,940,583	114,512	426,967	-	1,993,594	2,554,404	72,749,673
2000	39,618,813	-	1,006,662	28,090,812	3,243,369	119,479	640,449	-	2,935,719	2,373,284	78,028,587
2001	41,904,642	-	1,241,507	32,865,936	3,187,564	130,633	453,406	-	2,208,774	2,854,952	84,847,414
2002	45,019,473	-	1,406,450	32,434,866	3,822,996	137,593	504,702	-	1,329,554	3,286,693	87,942,327
2003	46,923,654	-	1,562,471	31,918,684	4,183,530	126,632	792,685	2,992,458	562,929	3,958,612	93,021,655
2004	49,536,277	-	1,593,897	34,642,193	4,030,048	174,003	1,016,713	-	637,306	3,326,843 (2)	94,957,280
2005	53,488,985	-	1,933,099	36,752,313	4,552,326	213,172	605,955	-	1,234,459	3,607,777	102,388,086
2006 (3)	55,938,250	-	2,056,748	44,001,017	4,893,149	282,241	2,031,506	-	2,341,248	4,061,214	115,605,373

(1) Includes the General, Special Revenue, Debt Service, and Capital Projects Funds.

(2) Decreased fees from Public Trustee and Clerk/Recorder.

(3) All lines increase reflects the increased population and use of County services in Mesa County.

Source: Mesa County Financial Services Division (CAFR)

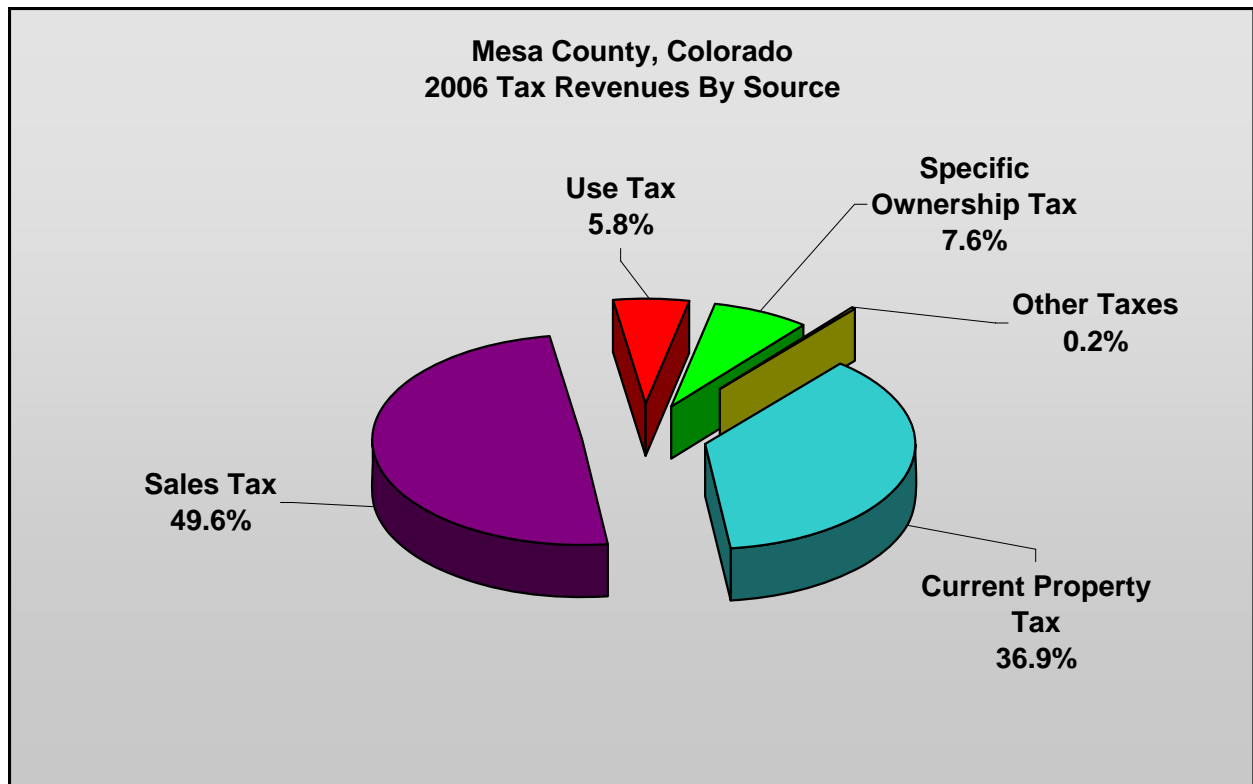
Mesa County, Colorado
GENERAL GOVERNMENT TAX REVENUES BY SOURCE (1)
Last Ten Fiscal Years

Fiscal Year	Current Property Tax	Sales Tax	Use Tax	Specific Ownership Tax	Other Taxes	Total
1997	\$ 14,738,117	\$ 13,715,354	\$ 1,366,768	\$ 2,049,290	\$ 91,534	\$ 31,961,063
1998	15,789,346	15,378,386	1,481,693	2,081,271	100,279	34,830,975
1999	16,242,721	16,366,579	1,845,300	2,298,085	58,133	36,810,818
2000	17,281,525	17,788,462	1,743,298	2,630,495	175,032	39,618,812
2001	18,075,910	18,994,985	1,891,569	2,880,956	61,222	41,904,642
2002	19,626,161	19,945,062	2,014,610	3,361,541	72,098	45,019,472
2003	20,437,400	20,818,552	2,042,322	3,535,755	89,625	46,923,654
2004	21,570,202	21,888,098	2,212,667	3,750,555	114,754	49,536,276
2005	22,613,075	24,405,372	2,641,362	3,586,051	243,125	53,488,985
2006	20,647,516	27,734,352	3,219,895	4,245,600	90,887	55,938,250

Source: Mesa County Financial Services Division (CAFR)

(1) The TABOR (Article X Section 20) amendment to the Colorado State Constitution limits revenue increases and has other specific requirements.

Note: Full reappraisals of all Mesa County properties are completed on a bi-yearly basis.

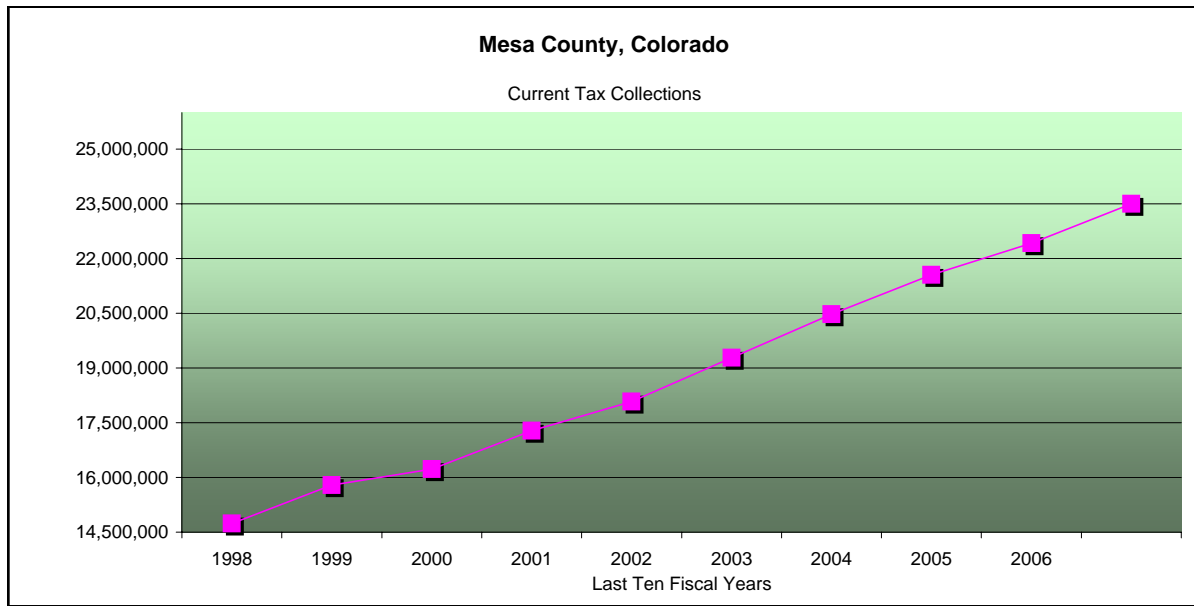


Mesa County, Colorado
COUNTY PROPERTY TAX LEVIES AND COLLECTIONS
Last Ten Fiscal Years

Year of Collection	Total Tax Levy (1)	Current Tax Collection	Percent of Levy Collected	Delinquent Tax Collections	Total Tax Collections	Ratio of Total Collections to Tax Levy	Outstanding Delinquent Taxes	Ratio of Delinquent Taxes to Tax Levy
1997	\$ 14,926,925	\$ 14,738,117	98.74%	\$ 46,765	\$ 14,784,882	99.05%	\$ 478,254	3.20%
1998	15,931,838	15,789,346	99.11%	42,826	15,832,172	99.37%	140,953	0.88%
1999	16,301,204	16,230,131	99.56%	4,060	16,234,191	99.59%	103,180	0.63%
2000	18,299,490	17,281,525	94.44%	125,141	17,406,666	95.12%	105,710	0.58%
2001	18,165,689	18,075,910	99.51%	17,183	18,093,093	99.60%	120,340	0.66%
2002	19,665,274	19,282,711	98.05%	12,725	19,295,436	98.12%	204,402	1.04%
2003	20,528,679	20,470,369	99.72%	22,282	20,492,651	99.82%	473,824	2.31%
2004	21,675,723	21,553,124	99.43%	71,644	21,624,768	99.76%	247,244	1.14%
2005	22,597,893	22,419,096	99.21%	18,301	22,437,397	99.29%	333,808	1.48%
2006	23,759,293	23,501,863	98.92%	43,857	23,545,720	99.10%	362,675	1.53%

(1) As certified by the Board of County Commissioners, does not include Temporary Tax Credit if applicable.

Sources: Mesa County Financial Services Division
Mesa County Treasurer's Office
Mesa County Assessor's Office

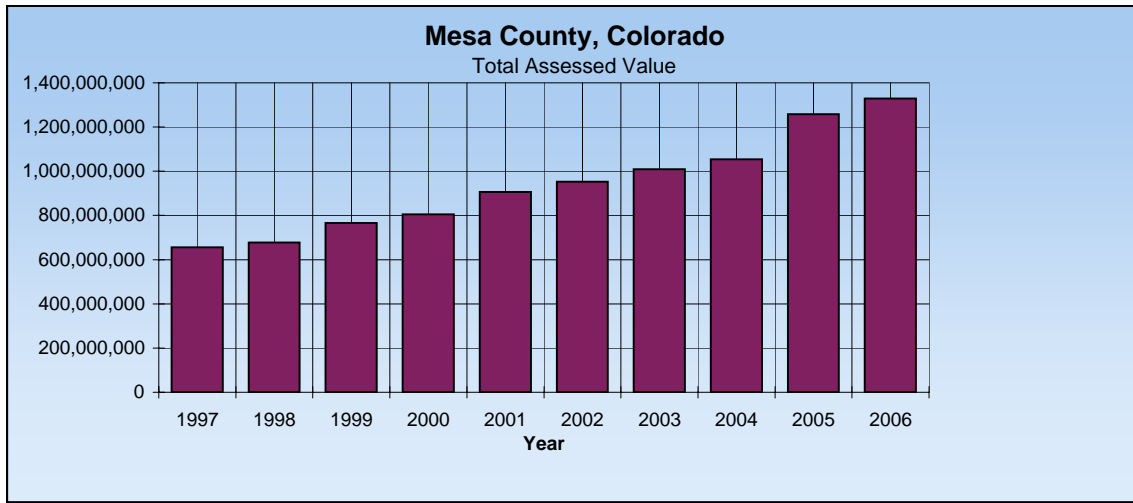


Mesa County, Colorado
ASSESSED AND ESTIMATED ACTUAL VALUE OF TAXABLE PROPERTY
Last Ten Fiscal Years

Levy Year	Assessed Value			Total Assessed Value	Actual Value	Ratio of Assesed Value to Estimated Actual Value	Base Year for Valuation
	Real Property	Personal Property	State Assessed and Other Property		Estimated Actual Value		
1997	\$ 550,026,390	\$ 43,764,880	\$ 61,467,400	\$ 655,258,670	\$ 4,207,085,986	15.58%	1996
1998	569,362,160	45,224,600	62,933,100	677,519,860	4,372,799,537	15.49%	1997
1999	647,025,160	50,568,970	68,356,700	765,950,830	4,787,192,688	16.00%	1998
2000	671,972,010	54,921,090	78,149,900	805,043,000	5,553,500,137	14.50%	1999
2001	763,464,640	55,727,830	87,022,300	906,214,770	6,919,496,613	13.10%	2000
2002	797,695,450	64,438,960	90,220,600	952,355,010	6,921,499,561	13.76%	2001
2003	851,005,780	67,338,240	91,070,100	1,009,414,120	8,499,754,145	11.88%	2002
2004	893,600,900	73,264,950	86,414,600	1,053,280,450	8,876,405,781	11.87%	2003
2005	1,089,246,480	79,913,340	88,794,300	1,257,954,120	10,539,635,729	11.94%	2004
2006	1,153,410,320	87,727,590	88,147,900	1,329,285,810	12,227,233,366	10.87%	2005

Source: Mesa County Assessor's Office, Abstract of Assessment and Summary of Taxes (Valued as of final certification).

Note: The County Assessor determines market value by collecting physical information regarding a given property, analyzing that information using statistical methods and comparing the resulting information to actual sales. The assessed value is a percentage set by the Colorado Division of Property Taxation and the State Legislature via Constitutional Amendment.



Mesa County, Colorado
PROPERTY TAX RATES AND TAX LEVIES - DIRECT AND OVERLAPPING GOVERNMENTS
PER \$1,000 ASSESSED VALUATION (MILL LEVY)
Last Ten Fiscal Years

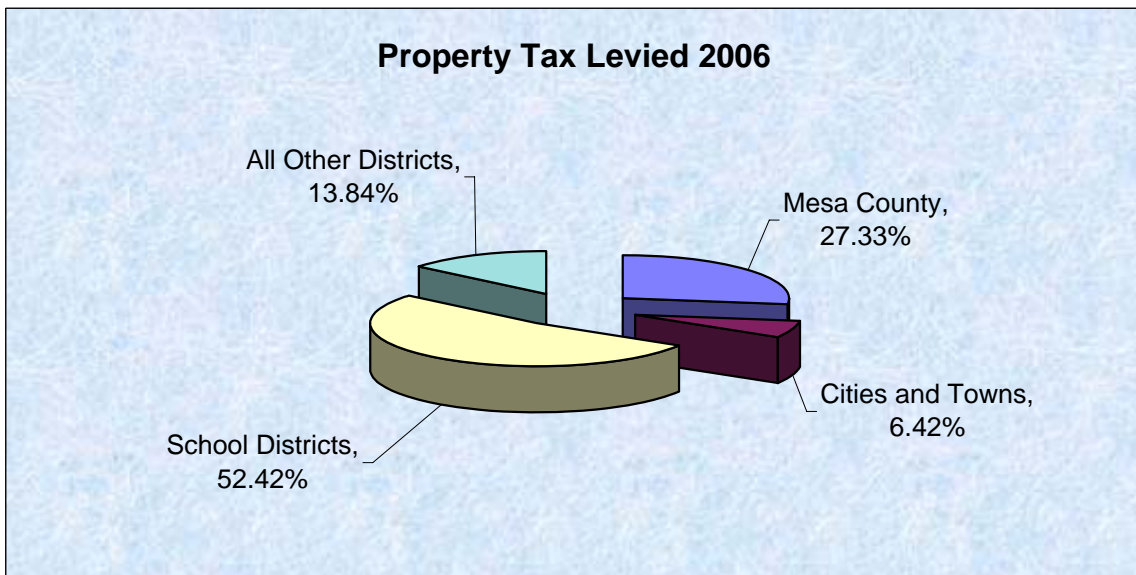
Levy Year	Collection Year	Mesa County	Cities and Towns	School Districts	All Other Districts	Total
1996	1997	25.74	75.93	166.53	315.50	583.70
1997	1998	23.41 *	66.43	160.98	303.33	554.15
1998	1999	23.28 *	65.97	165.66	300.96	555.87
1999	2000	22.78	62.90	155.68	338.96	580.32
2000	2001	21.82 *	68.13	138.52	333.24	561.71
2001	2002	22.24 *	65.04	123.60	336.07	546.94
2002	2003	21.81	65.50	128.52	304.01	519.84
2003	2004	21.72	65.16	128.40	193.49	408.76
2004	2005	19.11	64.31	108.10	163.11	354.63
2005	2006	18.99	62.32	91.89	165.81	339.01

PROPERTY TAX LEVIED

1996	1997	\$ 14,926,925	\$ 2,646,825	\$ 26,511,202	\$ 7,154,116	\$ 51,239,068
1997	1998	15,272,491 *	2,970,750	30,413,309	7,900,949	56,557,499
1998	1999	15,674,364 *	3,077,333	31,163,184	8,271,434	58,186,315
1999	2000	17,323,750	3,365,288	32,456,204	8,982,395	62,127,637
2000	2001	17,433,884 *	3,049,194	33,642,672	9,567,525	63,693,275
2001	2002	19,665,274 *	4,168,905	30,835,993	10,372,565	65,042,737
2002	2003	20,528,679	4,425,140	35,424,090	11,506,305	71,884,214
2003	2004	21,675,723	4,461,813	36,040,447	11,499,329	73,677,312
2004	2005	23,759,293	5,638,920	46,744,262	14,374,928	90,517,403
2005	2006	24,961,409	5,862,569	47,877,877	12,637,064	91,338,919

* Net of Mesa County temporary tax credits and abatement levies.

Source: Mesa County Assessor's Office



**Mesa County, Colorado
PRINCIPAL TAXPAYERS
December 31, 1997 and December 31, 2006**

Taxpayer	Type of Business	1997 Assessed Valuation	Percentage of Total Assessed Valuation	2006 Assessed Valuation	Percentage of Total Assessed Valuation
Public Service Company of Colorado	Utility	\$ 25,903,500	35.81%	\$ 35,579,200	33.44%
QWest Corporation (prev US West)	Utility	15,571,300	21.53%	14,149,900	13.30%
Sundstrand	Manufacturing	3,189,200	4.41%	*	
Union Pacific (prev Southern Pacific)	Railroad	5,240,600	7.25%	9,014,400	8.47%
Transcolorado Gas Trans	Utility	**		6,062,900	5.70%
SGD Macerich Prop LP/Mesa Mall	Shopping Mall	5,360,460	7.41%	9,897,660	9.30%
Walmart/Sam's	Retail	3,713,120	5.13%	9,510,640	8.94%
CoorsTek (prev Coors Porcelain)	Manufacturing	3,162,500	4.37%	4,059,460	3.82%
Grand Valley Rural Power	Utility	3,715,600	5.14%	4,679,120	4.40%
Dillon Real Estate/ City Market	Grocery	4,121,100	5.70%	*	
Williams Companies	Refinery	**		*	
PERA (Hilton/Adams Mark Hotel)	Hotel	2,354,390	3.25%	*	
Grand Mesa Center	Shopping Mall	**		4,383,250	4.12%
Bresnan Communications	Utility	**		9,051,250	8.51%
Totals		\$ 72,331,770	100.00%	\$106,387,780	100.00%

Source: Mesa County Assessor's Office

Based on a 1997 certified assessed valuation of

\$655,258,670

Based on a 2006 certified assessed valuation of

\$1,329,285,810

* Not in the top 10 in 2006

** Not in the top 10 in 1997

Mesa County, Colorado
GENERAL GOVERNMENT EXPENDITURES BY FUNCTION (a)
Last Ten Fiscal Years

Fiscal Year	General Government	Public Safety	Public Works	Public Health and Welfare	Human Services	Culture and Recreation	Miscellaneous	Inter-governmental	Capital Projects	Debt Service	Total
1997	\$ 10,886,034	\$ 11,334,730	\$ 9,513,214	\$ 27,199,005	\$ 796,244	\$ 1,065,994	\$ 485,392	\$ 705,636	\$ 1,745,635	\$ 5,974,355	\$ 69,706,239
1998	10,540,240	12,907,510	13,675,596	16,963,168 (c)	753,740	961,663	781,314	367,054	3,640,114	10,039,081	70,629,480
1999	12,131,932	14,099,423	9,035,692	18,110,817	1,627,493	1,424,528	736,294	462,356	11,417,634 (b)	5,395,010	74,441,179
2000	12,206,349	15,542,958	10,212,900	19,698,482	2,347,581	1,535,430	104,207	663,661	15,645,807 (b)	5,391,979	83,349,354
2001	13,223,025	17,955,472	10,826,467	22,703,970	1,612,883	1,459,098	483,648	440,447	5,391,672	5,387,939	79,484,621
2002	14,200,269	19,499,284	18,441,554	23,408,048	1,787,617	1,325,600	497,622	359,653	9,759,313	5,393,888	94,672,848
2003	16,142,235	20,521,089	18,313,495	24,449,489	1,708,232	1,305,460	693,414	359,754	8,258,697	5,390,164	97,142,029
2004	17,024,364	21,334,654	14,415,705	25,543,516	2,287,069	1,422,060	935,952	396,289	3,659,821 (d)	4,687,249	91,706,679
2005	15,700,427	26,155,632	22,813,980 (e)	25,814,677	2,881,679	1,303,666	250,799 (f)	373,941	3,948,441	5,022,219	104,265,461
2006	20,727,086	25,035,720	11,548,400 (g)	26,658,084	2,502,944	1,497,387	288,308	- (h)	17,586,222 (g)	5,028,188	110,872,339

(a) Includes the General, Special Revenue, Debt Service and Capital Projects Funds.

(b) Includes construction costs of the Detention Center and Sheriff's facility.

(c) After January 31, 1998 Human Services Fund expenditures do not include electronic benefits paid directly to clients by the State of Colorado.

(d) 29 Road Bridge funds encumbered to 2005.

(e) Includes Engineering projects formerly classified in Capital Projects and Transportation Impact Funds (new in 2005).

(f) Decrease in Community Development Block Grant-Revolving Loan Fund Grants.

(g) Changed reporting of capital construction from Public Works to Capital Projects.

(h) Included as a function of General Government.

Source: Mesa County Financial Services Division (CAFR)

Mesa County, Colorado
RATIO OF NET BONDED DEBT TO ASSESSED VALUE
AND NET BONDED DEBT PER CAPITA
Last Ten Fiscal Years

Fiscal Year	(1) Gross Bonded Debt	Debt Service Monies Available	Net Bonded Debt	Assessed Valuation	Ratio of Net Bonded to Assessed Valuation	(2) Population	Net Bonded Debt Per Capita
1997	\$ 15,330,000	\$ 157,925	\$ 15,172,075	\$ 655,258,670	2.32%	109,602	\$ 138
1998	14,255,000	186,482	14,068,518	677,519,860	2.08%	112,913	125
1999	13,110,000	262,054	12,847,946	765,950,830	1.68%	113,383	113
2000	11,900,000	628,034	11,271,966	805,043,000	1.40%	116,255	97
2001	10,620,000	542,515	10,077,485	906,214,770	1.11%	119,223	85
2002	9,275,000	581,713	8,693,287	952,355,010	0.91%	122,350	71
2003	7,875,000	651,975	7,223,025	1,009,414,120	0.72%	124,390	58
2004	6,410,000	91,804	6,318,196	1,053,280,450	0.60%	127,475	50
2005	4,875,000	120,970	4,754,030	1,257,954,120	0.38%	130,399	36
2006	3,260,000	98,603	3,161,397	1,329,285,810	0.24%	133,201	24

(1) Includes only certificates of participation financed by a property tax levy. The debt service obligation for the certificates of participation is subject to annual appropriation by the Board of County Commissioners. The certificates are not general obligation debt of the County.

(2) Population estimates are from the August 2006 Colorado Division of Local Government population forecasts.

Source: Mesa County Financial Services Division.

Mesa County, Colorado
COMPUTATION OF LEGAL DEBT MARGIN
GENERAL OBLIGATION DEBT
December 31, 2006

Computation of legal debt limit:		
2006 taxable assessed valuation		\$1,329,285,810
Plus exempt property		<u>172,559,630</u>
Total assessed value		\$1,501,845,440
Legal debt limit percentage		1.5%
		<u>\$ 22,527,682</u>

Amount of debt applicable to debt limit:

Total long-term borrowings	\$ 17,335,000	
Less: Sales tax revenue bonds	14,075,000	
Lease purchase certificates	<u>3,260,000</u>	
Net borrowings applicable to the debt limit		<u>-</u>
Legal debt margin		<u><u>\$ 22,527,682</u></u>

Source: Colorado Revised Statute 30-26-301.
Mesa County Financial Services (CAFR)

Note: Mesa County has had no general obligation bonded debt in the last ten years. Therefore, the historical table "Ratio of Annual Debt Service Expenditures for General Bonded Debt to Total General Expenditures" is not included.

Mesa County, Colorado
COMPUTATION OF DIRECT AND OVERLAPPING BONDED DEBT
GENERAL OBLIGATION BONDS
December 31, 2006

	Net Debt	Percentage Applicable to	Amount Applicable to
Direct:			
Mesa County	\$ -	-	\$ -
Overlapping:			
Collbran Water Conservancy District	191,697	100.00%	191,697
Ridges Metropolitan Districts	1,240,000	100.00%	1,240,000
Grand Junction West Water & Sanitation District	149,950	100.00%	149,950
Mesa County Valley School District No. 51	135,570,000	100.00%	135,570,000
	\$ 137,151,647		\$ 137,151,647

Sources: Mesa County Valley School District 51 and other individual taxing entities.

Mesa County, Colorado
REVENUE BOND COVERAGE
MESA COUNTY SALES TAX REVENUE BONDS
Last Ten Fiscal Years

Fiscal Year	(1) Sales Tax Revenues	Interest Earnings from Investments	Net Revenue Available for Debt Service	Debt Service Requirements (2)				
				Principal	Interest	Principal/Interest Ratio	Total Principal and Interest	Coverage
1997	\$ 9,458,931	\$ 1,312,378	\$ 10,771,309	\$ 1,140,000	\$ 2,978,020	38.28%	\$ 4,118,020	2.62
1998	10,605,857	1,283,399	11,889,256	1,225,000	2,895,210	42.31%	4,120,210	2.89
1999	11,287,375	502,081	11,789,456	1,625,000	1,911,245	85.02%	3,536,246	3.33
2000	12,267,991	871,477	13,139,468	1,725,000	1,812,245	95.19%	3,537,246	3.71
2001	13,100,081	462,269	13,562,350	1,830,000	1,707,245	107.19%	3,537,246	3.83
2002	13,755,311	107,724	13,863,035	1,940,000	1,595,795	121.57%	3,535,796	3.92
2003	14,357,722	18,880	14,376,602	2,060,000	1,477,595	139.42%	3,537,596	4.06
2004	15,095,346	-	15,095,346	2,185,000	1,351,658	161.65%	3,536,658	4.27
2005	16,831,406	-	16,831,406	2,390,000	778,638	306.95%	3,168,638	5.31
2006	19,127,296	-	19,127,296	2,500,000	669,438	373.45%	3,169,438	6.03

(1) Sales tax pledged for debt service is one-half of the 2% Mesa County sales tax.

(2) Debt service includes regularly scheduled principal and interest payments. Transactions related to bond refundings, early call of subordinate bonds, or interest accretion of capital appreciation bonds are not included in this table.

Mesa County, Colorado
Revenues, Expenditures, and Changes in Fund Balance
Governmental Funds
Last Ten Fiscal Years

	2006	2005	2004	2003	2002	2001	2000	1999	1998	1997
REVENUES										
Taxes	\$ 55,938,250	\$ 53,488,985	\$ 49,536,277	\$46,923,654	\$ 45,019,473	\$41,904,642	\$ 39,618,813	\$ 36,810,818	\$ 34,830,975	\$ 32,077,415
Licenses and Permits	2,056,748	1,933,099	1,593,897	1,562,471	1,406,450	1,241,507	1,006,662	1,047,527	906,724	832,862
Intergovernmental	44,001,017	36,752,314	34,577,194	31,918,684	32,434,866	32,865,936	28,090,812	26,861,268	23,281,637	33,582,394
Charges for services	4,893,149	4,552,326	4,030,048	4,183,530	3,811,037	3,187,564	3,243,369	2,940,583	3,105,812	2,380,927
Fines and forfeitures	282,241	213,172	174,003	126,632	137,593	130,633	119,479	114,512	48,662	45,191
Interest	2,341,248	1,234,459	637,306	562,929	1,437,278	2,208,774	2,935,719	1,993,594	2,927,739	2,660,002
Fee accounts	4,061,214	3,607,777	3,326,843	3,958,612	3,294,278	2,854,952	2,373,284	2,554,404	2,313,994	1,868,503
Contracts	-	-	-	2,992,458	-	-	-	-	-	-
Miscellaneous	2,031,508	605,953	1,081,712	792,685	401,350	453,409	640,449	426,967	562,436	347,313
TOTAL REVENUES	115,605,375	102,388,084	94,957,280	93,021,655	87,942,325	84,847,417	78,028,587	72,749,673	67,977,979	73,794,607
CURRENT EXPENDITURES										
General government	20,727,086	15,700,427	17,024,364	16,142,235	14,200,269	13,223,025	12,206,349	12,131,932	10,540,240	10,886,034
Public safety	25,035,720	26,155,632	21,334,654	20,521,089	19,499,284	17,955,472	15,542,959	14,099,423	12,907,510	11,334,730
Public works	11,548,400	22,813,980	14,415,705	18,313,495	18,441,554	10,826,467	10,212,900	9,035,692	13,675,596	9,513,214
Public health and welfare	26,658,084	25,814,677	25,543,516	24,449,489	23,408,048	22,703,970	19,698,481	18,110,817	16,963,168	27,199,005
Human services	2,502,944	2,881,679	2,287,069	1,708,232	1,787,617	1,612,883	2,347,581	1,627,493	753,740	796,244
Miscellaneous	288,308	250,799	935,952	693,414	497,622	483,648	104,207	736,294	781,314	485,392
Culture and recreation	1,497,387	1,303,666	1,422,060	1,305,460	1,325,600	1,459,098	1,535,430	1,424,528	961,663	1,065,994
Capital projects	17,586,222	3,948,441	3,659,821	8,258,697	9,759,313	5,391,672	15,645,807	11,417,634	3,640,114	1,745,635
Debt Service										
Principal	4,115,000	3,925,000	2,540,000	3,460,000	3,285,000	3,110,000	2,935,000	2,770,000	8,035,000	2,160,000
Redemption Premium	-	-	197,200	-	-	-	-	-	-	-
Interest	913,188	1,097,219	1,950,049	1,930,164	2,108,888	2,277,939	2,456,979	2,625,010	2,004,081	3,814,355
Intergovernmental	-	373,941	396,289	359,754	359,653	440,447	663,661	462,356	367,054	705,636
TOTAL EXPENDITURES	110,872,339	104,265,461	91,706,679	97,142,029	94,672,848	79,484,621	83,349,354	74,441,179	70,629,480	69,706,239
EXCESS (DEFICIENCY) OF REVENUES OVER EXPENDITURES	\$ 4,733,036	\$ (1,877,377)	\$ 3,250,601	\$ (4,120,374)	\$ (6,730,523)	\$ 5,362,796	\$ (5,320,767)	\$ (1,691,506)	\$ (2,651,501)	\$ 4,088,368
Transfers In	9,273,743	19,904,707	12,878,354	15,820,064	18,220,875	10,381,568	20,018,227	11,993,225	13,385,893	6,294,472
Transfers Out	(8,202,993)	(19,412,707)	(12,300,427)	(18,374,199)	(18,465,187)	(10,454,568)	(20,080,570)	(12,064,939)	(13,430,872)	(6,434,600)
Other	-	(1,693,538)	(586,042)	-	-	-	(307,655)	-	(1,555,006)	655,772
Sale of Assets	8,484	3,850	351,794	1,302,544	-	129,189	66,974	65,848	285,248	107,325
	<u>1,079,234</u>	<u>(1,197,688)</u>	<u>343,679</u>	<u>(1,251,591)</u>	<u>(244,312)</u>	<u>56,189</u>	<u>(303,024)</u>	<u>(5,866)</u>	<u>(1,314,737)</u>	<u>622,969</u>
NET CHANGE IN FUND BALANCE	5,812,270	(3,075,065)	3,594,280	(5,371,965)	(6,974,835)	5,418,985	(5,623,791)	(1,697,372)	(3,966,238)	4,711,337
Fund Balance January 1	24,899,113	27,977,946	24,383,666	29,755,631	36,730,466	31,311,481	36,935,272	38,632,644	42,598,882	37,887,545
Prior Period Adjustment		(3,768)								
Fund Balance December 31	<u>\$ 30,711,383</u>	<u>\$ 24,899,113</u>	<u>\$ 27,977,946</u>	<u>\$24,383,666</u>	<u>\$ 29,755,631</u>	<u>\$36,730,466</u>	<u>\$ 31,311,481</u>	<u>\$ 36,935,272</u>	<u>\$ 38,632,644</u>	<u>\$ 42,598,882</u>
Ratio of Debt Service Expenditures/ Total Non-Capital Expenditures	5.2%	4.9%	5.6%	6.5%	6.8%	7.8%	8.7%	8.7%	17.6%	9.6%

Source: Mesa County Financial Services

**Mesa County, Colorado
FUND BALANCES
Last Ten Fiscal Years**

	2006	2005	2004	2003	2002	2001	2000	1999	1998	1997
General Fund Balances										
Reserved for Encumbrances	\$ 765,073	\$ 271,377	\$ 431,296	\$ 719,780	\$ 317,563	\$ 259,185	\$ 141,598	\$ 122,990	\$ 316,954	\$ 244,879
Reserved for Prepaid Items	39,385	19,541	62,166	12,593	984	63,371	29,425	34,233	-	-
Reserved for Emergencies	2,590,764	-	-	-	-	-	-	-	-	-
Unreserved:										
Designated for subsequent year's expenditures	2,246,726	2,303,716	3,934,411	1,158,434	6,666,514	2,853,788	2,230,508	298,662	977,489	4,470,117
Designated	49,680	48,949	51,286	49,219	63,112	40,080	39,026	51,355	30,678	34,150
Undesignated	9,581,615	6,741,339	6,413,020	7,755,437	6,753,722	8,516,935	6,516,442	5,842,167	4,626,586	3,237,314
Total General Fund Balances	15,273,243	9,384,922	10,892,179	9,695,463	13,801,895	11,733,359	8,956,999	6,349,407	5,951,707	7,986,460
Other Governmental Fund Balances										
Reserved for Encumbrances	3,575,212	4,645,487	2,030,025	3,055,903	3,667,801	2,152,959	323,397	1,682,729	5,211,406	2,228,826
Reserved for Trust and Other Accounts	329,704	50,250	196,126	-	-	-	-	-	-	-
Reserved for Emergencies	-	2,046,677	1,988,693	1,988,693	1,931,662	1,864,189	1,812,631	1,703,861	1,697,950	1,634,492
Reserved for Prepaid Items	119,684	254	28,756	13,611	15,556	10,100	17,767	440	9,410	14,078
Reserved for Debt Service	446,002	555,499	455,269	974,924	876,250	837,052	922,554	556,866	2,021,435	14,056,055
Reserved for Capital Projects	5,625,423	4,292,964	5,126,216	1,006,017	3,230,639	10,525,501	5,384,537	11,377,418	16,398,576	8,979,034
Unreserved:										
Designated for subsequent year's expenditures	1,410,695	1,195,485	1,153,902	2,084,368	2,586,676	4,620,288	9,055,145	8,319,670	2,948,608	2,996,945
Undesignated			6,106,780	5,564,687	3,645,152	4,987,018	4,838,450	6,944,880	4,393,552	4,702,992
Human Services	1,910,571	1,828,663	*	*	*	*	*	*	*	*
Public Works	1,325,313	10,504	*	*	*	*	*	*	*	*
Public Health	354,764	238,679	*	*	*	*	*	*	*	*
Public Safety	35,894	47,547	*	*	*	*	*	*	*	*
Culture & Recreation	145,894	516,769	*	*	*	*	*	*	*	*
Other	158,984	85,413	*	*	*	*	*	*	*	*
Total Other Govt Fund Balances	15,438,140	15,514,191	17,085,767	14,688,203	15,953,736	24,997,107	22,354,481	30,585,864	32,680,937	34,612,422
Total Fund Balances	\$ 30,711,383	\$ 24,899,113	\$ 27,977,946	\$ 24,383,666	\$ 29,755,631	\$ 36,730,466	\$ 31,311,480	\$ 36,935,271	\$ 38,632,644	\$ 42,598,882

*Additional breakdown of this information began with the 2005 reporting year.

**Mesa County, Colorado
DEMOGRAPHIC STATISTICS
Last Ten Fiscal Years**

Fiscal Year	(1) Population	(2) School Enrollment (K-12)	Percent of School Enrollment to Population	(3) Total Labor Force	Unemployment Rate	(1) Per Capita Income	(4) Retail Sales (In Millions)
1997	109,602	18,995	17.33%	56,401	4.5%	\$ 20,593	\$ 2,075
1998	112,913	18,694	16.56%	58,691	5.0%	22,491	2,356
1999	113,383	19,567	17.26%	58,927	5.0%	23,557	2,337
2000	116,255	19,428	16.78%	58,532	3.7%	24,693	2,576
2001	119,223	20,404	17.11%	59,677	4.4%	25,366	2,707
2002	122,350	20,174	16.49%	61,109	4.8%	*	2,840
2003	124,390	20,595	16.56%	66,761	5.4%	*	*
2004	127,475	20,207	15.85%	69,907	4.8%	*	3,216
2005	130,399	20,207	15.50%	72,897	3.6%	30,609	4,372
2006	133,201	21,237	15.94%	74,880	3.9%	30,654	5,853

Data Sources:

- (1) DOLA Demography section website
- (2) School district #51 website
- (3) Grand Junction Economic Partnership website
- (4) Colorado Department of Revenue website

* Information not available for these years.



Mesa County, Colorado
PRINCIPAL EMPLOYERS
December 31,2006

Employer	Type of Business	Not Available Prior To 2003	Number of Employees 2003	Number of Employees 2004	Number of Employees 2005	Number of Employees 2006
			(1)	(1)	(2)	(2)
School District #51	Schools		2,646	2,786 a	2,429	2,600
St. Mary's Hospital	Medical		2,073	1,985	2,014	2,000
Mesa State College	Schools		1,194	1,440	1,177	1,250
State of Colorado	Government		580	922 a	969	982
Mesa County	Government		869	872	927	925
City of Grand Junction	Government		570	1,015 a	900	808
Walmart/Sams	Retail		1,000	860 a	865	910
Halliburton	Services				415	700
City Markets, Inc.	Retail		600	600	400 a	589
Star Tek	Services		550	300 a	350 a	580
Choice Hotels	Services		400	346	376	400
Veterans' Administration	Services				353	425
Community Hospital	Medical		420	415	414	392
Rocky Mountain Health Plans	Insurance		380	386	372	350

Source: (1)Grand Junction Chamber of Commerce
(2)Grand Junction Economic Partnership

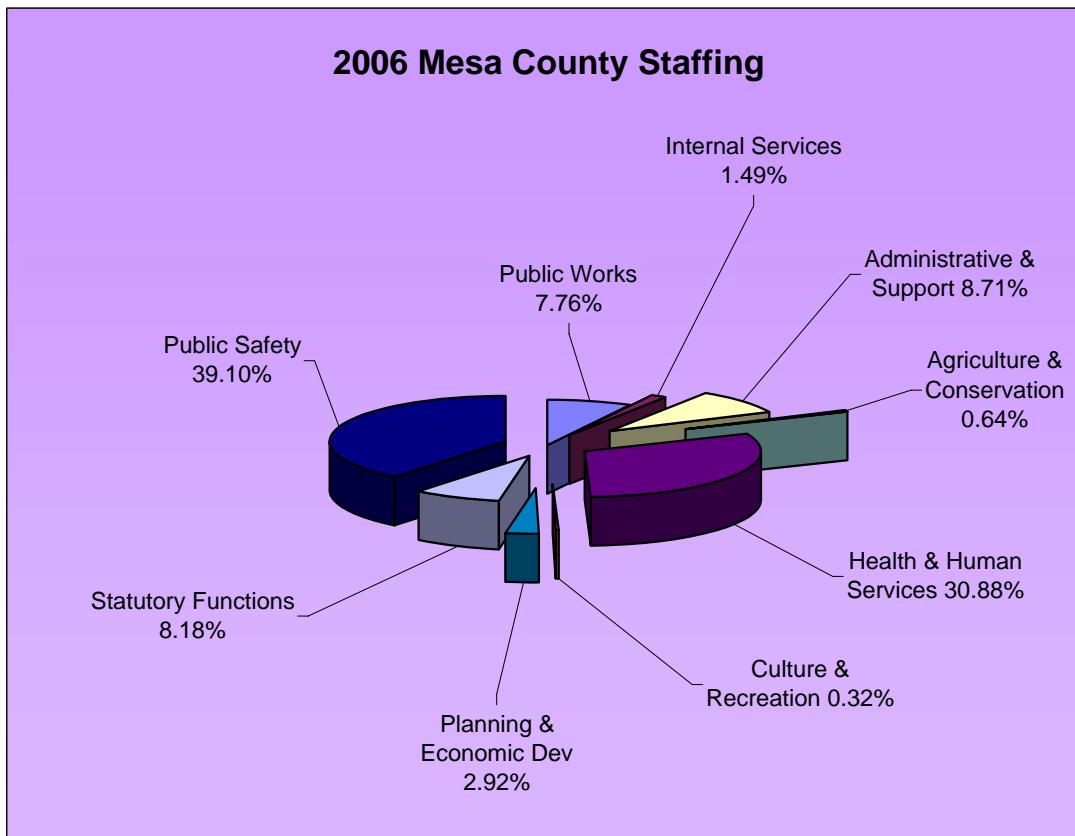
a.) some figures from prior years appear to be incorrect

2006 STAFFING

The chart below depicts the areas of government where Mesa County employees are performing. Public Safety is the largest employment area of Mesa County government, comprising 39.1% of all Mesa County full time equivalent positions. The Sheriff's Department, which includes Detention, represents 206 of the 367.95 positions. Other departments included in Public Safety are: Animal Services, District Attorney, Criminal Justice Services, Coroner, Traffic, Building Inspection, and Emergency Management.

The next largest staffing area is the Department of Human Services with 205.83 or 21.9% of the total positions adopted. This department administers several programs such as Colorado Works, Job Services, Veterans Affairs, Adult Services, Aid to the Blind, Family Preservation, and Child Welfare.

The remaining County employees provide various citizen services, many of which are mandated by Colorado law. In 2006, the County's Adopted budget included 941.09 full time equivalent positions. Mesa County has experienced steady population growth since 1990, and all areas of County government such as health inspections, public work projects, vehicle licensing, document recording, public safety and health/human service needs have been heavily impacted.



**Mesa County, Colorado
Staffing and Service**

	2006	2005	2004	2003	2002	2001	2000	1999	1998	1997		
GENERAL GOVERNMENT												
<i>Administration & Support</i>												
Number of Employees		91.0	101.0	100.0	82.0	77.0	77.0	74.0	72.0	65.0		
Building(s) Sq. Footage	c.	290,654	91,989	85,443	75,821	75,821	75,821	75,821	75,821	75,821		
Service Level (if applicable)		N/A	N/A	N/A	N/A	N/A	N/A	N/A	N/A	N/A		
<i>Clerk and Treasurer</i>												
Number of Employees		45.0	44.0	43.0	43.0	41.0	41.0	40.0	40.0	39.0		
Building(s) Sq. Footage		17,129	17,051	16,245	14,085	14,085	14,085	12,045	12,045	10,645		
Service Level (if applicable)												
Tax notices/certificates		84,215	85,200	85,200	82,410.0	85,889.0	82,251.0	not available prior to 2002				
Documents recorded	b.	231,985	228,637	223,133	231,826	181,316	169,398	156,806	194,118	197,668		
Registered voters		89,393	85,406	86,163	79,950	78,158	80,630	72,029	77,581	71,078		
<i>Assessor</i>												
Number of Employees		29.0	28.0	28.0	28.0	28.0	27.0	27.0	27.0	26.0		
Building(s) Sq. Footage		5,321	5,321	5,321	3,537	3,537	3,537	3,537	3,537	3,537		
Service Level (if applicable)												
Parcels of land		71,277	70,515	68,267	65,694	61,877	63,276	65,266	59,321	56,671		
<i>Planning and Economic Development</i>												
Number of Employees		27.5	23.5	23.5	21.5	20.0	19.0	16.0	16.0	13.0		
Building(s) Sq. Footage		4,529	6,133	6,590	8,603	8,603	8,603	8,603	8,603	8,603		
Service Level (if applicable)		N/A	N/A	N/A	N/A	N/A	N/A	N/A	N/A	N/A		
<i>Public Works and Internal Services</i>												
Number of Employees		85.0	74.0	67.0	84.0	91.0	90.0	90.0	89.0	92.0		
Building(s) Sq. Footage		64,719	68,448	65,414	70,961	70,961	70,961	70,961	70,961	70,961		
Service Level (if applicable)												
Miles of road maintained		1,385.03	1,393.9	1,394.5	1,671.0	1,453.0	1,447.0	1,313.0	1,349.0	1,413.0		
Engineering & Construction Services				Not measurable								
<i>Public Safety</i>												
Number of Employees		368.0	333.7	323.7	323.7	300.0	298.0	293.0	280.0	231.0		
Building(s) Sq. Footage		319,116	331,872	313,715	190,964	190,964	190,964	190,964	190,964	170,122		
Service Level (if applicable)												
Calls for Law Enforcement service		36,966	36,141	33,687	31,902	29,901	29,270	26,284	25,389	24,800		
Jail bookings		6,634	8,142	7,988	7,833	7,462	7,232	6,490	6,389	not available prior to 1999		
Average Criminal Justice Clients		2,176	1,877	1,709	1,819	2,162	2,147	1,786	1,618	1,546	1,021	
<i>Health Department</i>												
Number of Employees		84.8	82.4	74	74	59	59	56	48	not available prior to 1999		
Building(s) Sq. Footage		42,167	46,550	41,490	47,900	24,832	24,832	24,832	24,832	21,584	21,584	
Service Level (if applicable)												
Immunizations		15,496	18,746	18,506	20,102	19,294	16,668	19,588	24,230	17,386	20,976	
Birth/Death Certificates		3,663	3,524	3,362	3,330	3,287	3,142	3,027	2,957	2,902	2,354	
<i>Human Services</i>												
Number of Employees		205.8	212.8	212.8	212.8	209	196	184	176	173	not available prior to 1998	
Building(s) Sq. Footage		61,112	54,639	59,632	54,400	50,276	50,276	50,276	46,776	46,776	36,244	
Service Level (if applicable)												
Caseload		25,472	29,117	not available		21,454	20,104	19,422	10,795	10,021	9,893	10,175
				(a)								

Source: Mesa County departments and documents

- a.) Colorado Dept of Health and Human Services computer system was not operable during this period
- b.) Includes recorded documents and vehicles registrations.
- c.) Parking garage and Fair Ground facilities added