



Public Forums

January 2009

- 1. Open House – Please review materials in the room (30 min.)**
Comment Forms
- 2. Overview – Presentation (15 min.)**
Staff Presentation
- 3. Discussion Groups – Breakout Groups – by Resource (45 min.)**
- 4. Group Summary Presentations – Wrap-up (30 min.)**



- Meeting Format
- Introduction & Overview
- Current Status/Next Steps
- Group Discussions and Summary



Public Forums

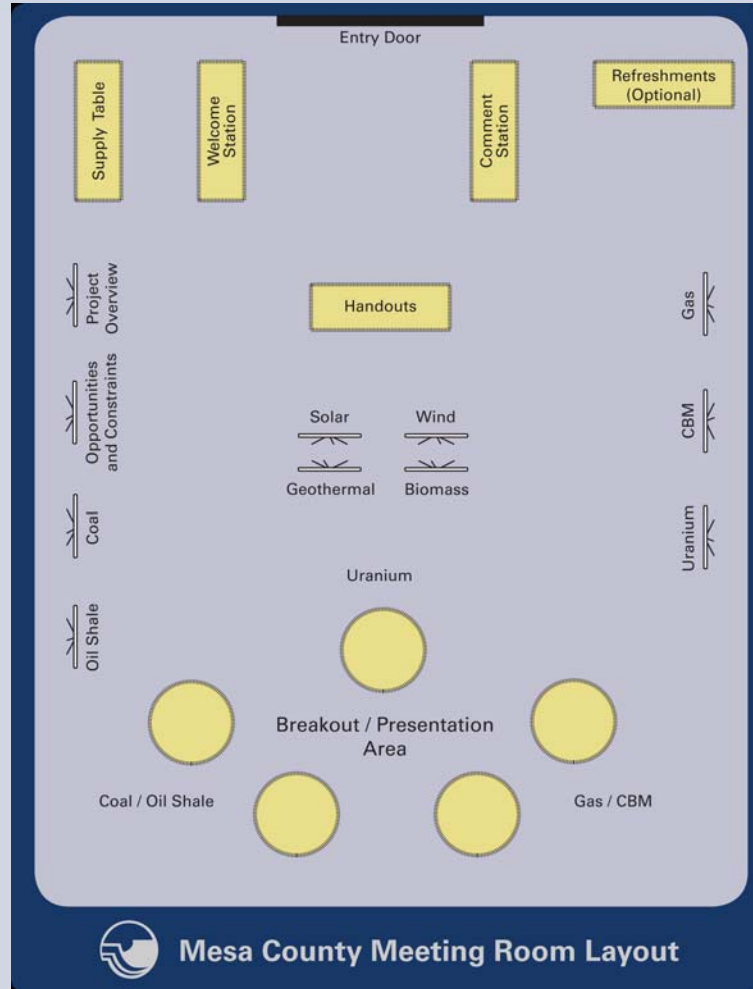
January 2009

- 1. Open House – Please review materials in the room (30 min.)**
Comment Forms
- 2. Overview – Presentation (15 min.)**
Staff Presentation
- 3. Discussion Groups – Breakout Groups – by Resource (45 min.)**
- 4. Group Summary Presentations – Wrap-up (30 min.)**



Mesa County Energy Master Plan

Meeting Layout





Mesa County Energy Master Plan

PURPOSE

- A policy document to be adopted by the Board of County Commissioners related to energy exploration, development and use.
- All development in Mesa County should be conducted in a manner to preserve the quality of life in our local communities while minimizing impacts on the communities and environment.
- The policy plan on how Mesa County can mitigate the impacts—and take advantage of the benefits—of energy development.



POLICIES/PLANS

- ◆ Energy Policies #17 (1983)
- ◆ Environment #18 (1983)
- ◆ Energy Siting Policy #20 (1983)
- ◆ Transmission Lines Policy #21 (1983)
- ◆ Mineral Extraction Policies #29 (1985)
- ◆ Countywide Plan (1996 – updated 2005)

Current Status and Next Steps

IN-HOUSE PROJECTS

- Energy Policy Opportunity Map- interactive map on-line (summer '07) www.mesacounty.us/epom
 - Public Forums – 4 presentations
- Evaporative Pond Policies adopted Feb. '08
- Support Services & Temporary Housing Standards
Oct. '08

EPOM Website

www.mesacounty.us/epom

Home County Location Search/Disclaimer Documents/Contacts/Links Map

EPOM Portions of this website are in development

Clear Results Select Analysis...
Zoom To...

Identify Layer(s) *All Visible Layers

Results

Map Contents

- EPOM Layers
 - Mesa County APDs Permits
 - *Energy Facility and Permit Layers
 - Limited Structures Dwellings
 - Parcels
 - *Emergency Services Layers
 - *Hazard/Resource Layers
 - *Water Related Sensitivities
 - *Transportation Layers
 - *Sensory Impacts
 - *Biological Resources
- Adjacent Counties
- Basemap Layers
- Air Photo/USGS

DELTA COUNTY, CO

MONTROSE COUNTY, CO

OURAY COUNTY, CO

SAN MIGUEL COUNTY, CO

HINSDALE COUNTY, CO

PIT

GUNI

7 3.5 0 7 Miles

Done

Internet 100%

DRAFT MESA COUNTY ENERGY POLICY PLAN –PHASE 1
 Draft Mitigation Measures

10/09/2007

Sensitivity	Mitigation Measure	Description	Recommended or Mandator
Noise	SCADA/Telemetry	<p>Supervisory Control and Data Acquisition (SCADA)/Telemetry systems are used to monitor and/or control processes within facilities remotely.</p> <ul style="list-style-type: none"> • Can be employed at production, gathering and processing facilities to minimize transportation impacts due to typical personnel facility monitoring and control. • Allows for a rapid and remote response in the event of an adverse incident minimizing potential impacts while protecting the community and potential emergency response or company personnel. • Field activities can be better planned and more efficient due to remote monitoring capabilities. • Communication with cell towers, satellites, and other transmitters may limited employing this technology.(NOTE: locating new cell towers may require a Conditional Use Permit) 	Recommended
Noise	Screening/Barriers	<p>Screening/Barriers include natural or constructed barriers to screen visibility of facilities and/or odor impacts.</p> <ul style="list-style-type: none"> • Employed in area with moderate to high sensitivity for visual or noise impacts. • May be most appropriate in locations when tied to Directional or Horizontal Drilling where surface locations can be located to account for topography and other variance in the landscape. 	REQUIRES ON SITE INSPECTION TO DETERMIN APPLICABILITY

BLM Mineral Ownership and Lease Info Website

<http://gis.mesacounty.us/minerals.aspx>

BLM Mineral Ownership

Zoom to Area...

ADVANCED MENU

- ZOOM IN
- ZOOM OUT
- PAN
- ACCESS ASSESSOR INFO
- IDENTIFY
- SELECT
- FIND
- CLEAR
- PRINT
- HELP

LEGEND MAP LAYERS

MAP LAYERS

- All Layers
- Property Information
- Property Lines
- Parcel Lines
- Areas Closed to Leasing
- Oil and Gas Lease Stipulations
- Map Features
- Survey Lines
- Waterways
- Public Lands
- Ortho Photos

Refresh Map

Auto Refresh

Help:

- A closed group, click to open.
- An open group, click to close.
- A map layer.

BLM Mineral Ownership

Rec	Subsurface	Label
1	FM	F-FM

Done Internet 100%

start

N... K... M... S... A... V... D... E... M... M... E... M...

10:30 AM Thursday 01/08/2009

Local Government Designee (LGD) for Colorado Oil & Gas Conservation Commission

Mesa County Energy Planner

Randy Price

Office Phone #: (970) 244-1759

Randy.Price@mesacounty.us



Evaporative Pond Facilities Policies

- Purpose - Minimize or eliminate potential adverse impacts of waste or produced water from drilling operations.
- Requires a Conditional Use Permit.
- Provides guidance to staff, public and applicants.



Support Services Standards

- Support service for oil and gas drilling operations.
- Requires Conditional Use Permit for up to 3 years
(Or a Temporary Use Permit for less than one year)
- Intended for remote rural areas.



Temporary Employee Housing Standards

- Housing related to commercial, industrial, transportation, oil and gas or mineral extraction projects.
- 20 or more employees - Conditional Use Permit
- Fewer than 20 employees on-site - Minor Site Plan

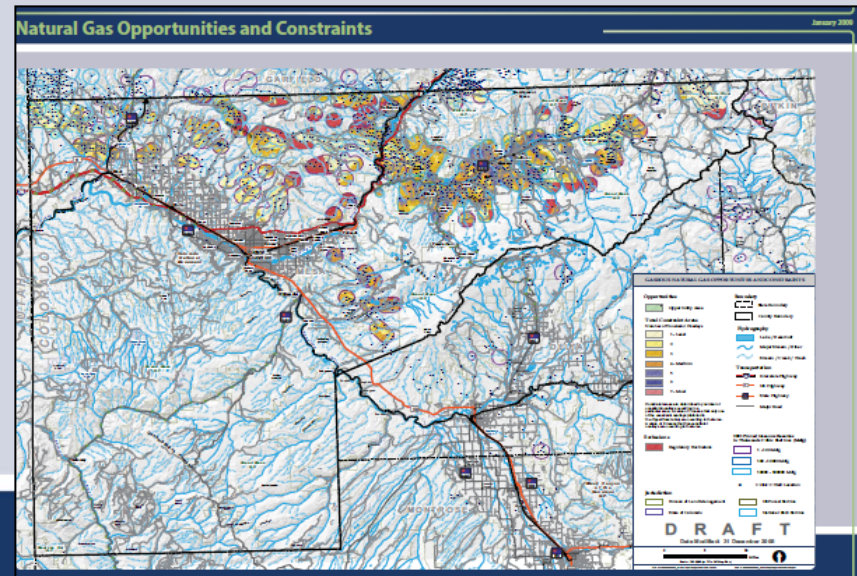


Exhibit 1H

Current Status and Next Steps

CONSULTANT SERVICES (Jan '09)

- Energy Resource Maps
(Coal, Coalbed Methane, Natural Gas, Oil Shale, Uranium, Biomass, Solar, Wind, Geothermal)
- Opportunities/Constraints Maps - non-renewables



Opportunities and Constraint Maps

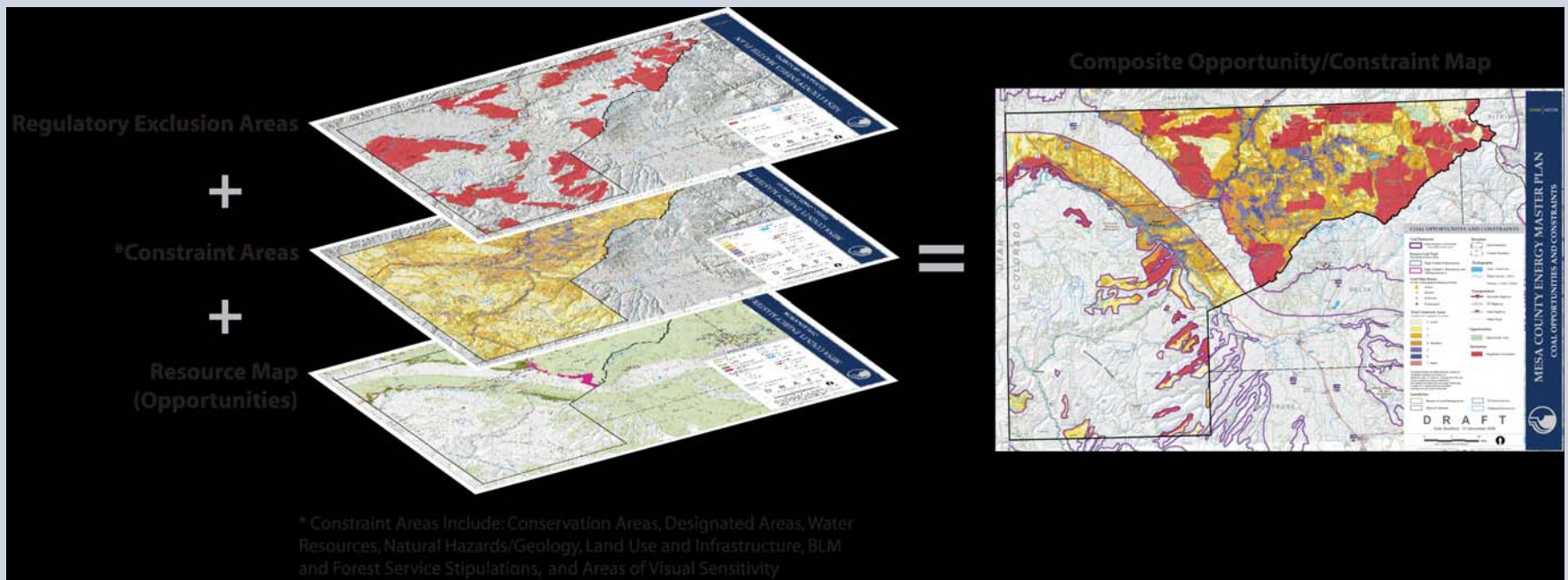
Constraint layers include:

- Conservation areas (State Parks, campgrounds, etc.)
- Water resources
- Natural hazards
- Land uses (agricultural and residential areas)
- BLM and Forest Service lease stipulation areas,
- Visual sensitivity

Exclusion layer:

- Federal and State regulatory designations (wilderness/ wilderness study areas, Colorado National Monument, etc.)

Opportunities and Constraint Maps



Current Status and Next Steps

CONSULTANT SERVICES

(EDAW/AECOM, Inc.)

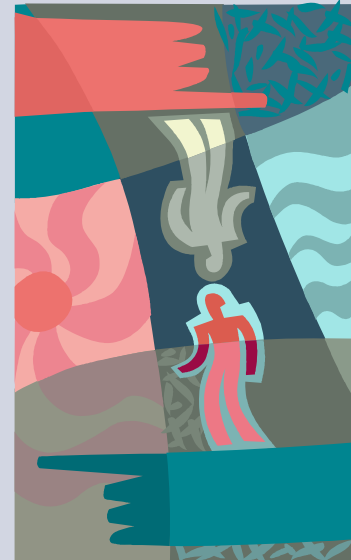
- Issue Identification
 - Stakeholder interviews -Dec '08
 - Public Forums -Jan '09
- Policy and Regulation Analysis
 - Petroleum, Coal, Uranium -in process
- Policy and Implementation Recommendations - April '09



ISSUE IDENTIFICATION

Issue Categories from Stakeholders

1. Infrastructure
2. Regulatory
3. Operation
4. Environment
5. Economics
6. General



ISSUE IDENTIFICATION

Top Five Stakeholder Concerns

1. - Roads & Access - Daily & Emergency Use, Standards
2. - Water Quality
3. - Increased Traffic Impacts
 - Data Collection/Sharing – County/Communities/Region

ISSUE IDENTIFICATION

Top Five Stakeholder Concerns cont'd

4. - Air Quality

- Enforcement
- Chemical/Haz Material Use/Storage/Spills/ Response

5. - Limits / Extent of County Authority

- Reclamation Standards & Enforcement
- Communication – Best Management Practices



Mesa County Energy Master Plan

Schedule

TASKS	2009			
	JAN	FEB	MAR	APR
Public Meetings (January 13-15 and 20-22)	●●			
Draft Policies Analysis Report		●		
Draft-Final Resource Maps		●		
Final Resource Maps			●	
Final Energy Atlas			●	
Draft-Final Policy and Recommendations Report			●	
Final Reports and Maps for County Review				●
Work Sessions and Presentations to County				●
Complete Website Enhancements				●



Public Forums

January 2009

January 13 – Fruita - Fruita 8/9 School (6:30 p.m)

January 14th – Collbran - Plateau Valley School (6:30 p.m)

January 15th – Palisade - Community Center (6:30 p.m)

January 20th – Gateway - Community Center (6:30 p.m)

January 21st – DeBeque – DeBeque School (6:30 p.m)

**January 22nd – Grand Junction—Old County Courthouse
(4:00 p.m.—AND— 6:30 p.m.)**



Mesa County Energy Master Plan



Governor's
Energy Office



Build **GREEN** Live **GREEN**

Sustainability Forum and Renewable Energy Expo

Wednesday January 28th, 2009

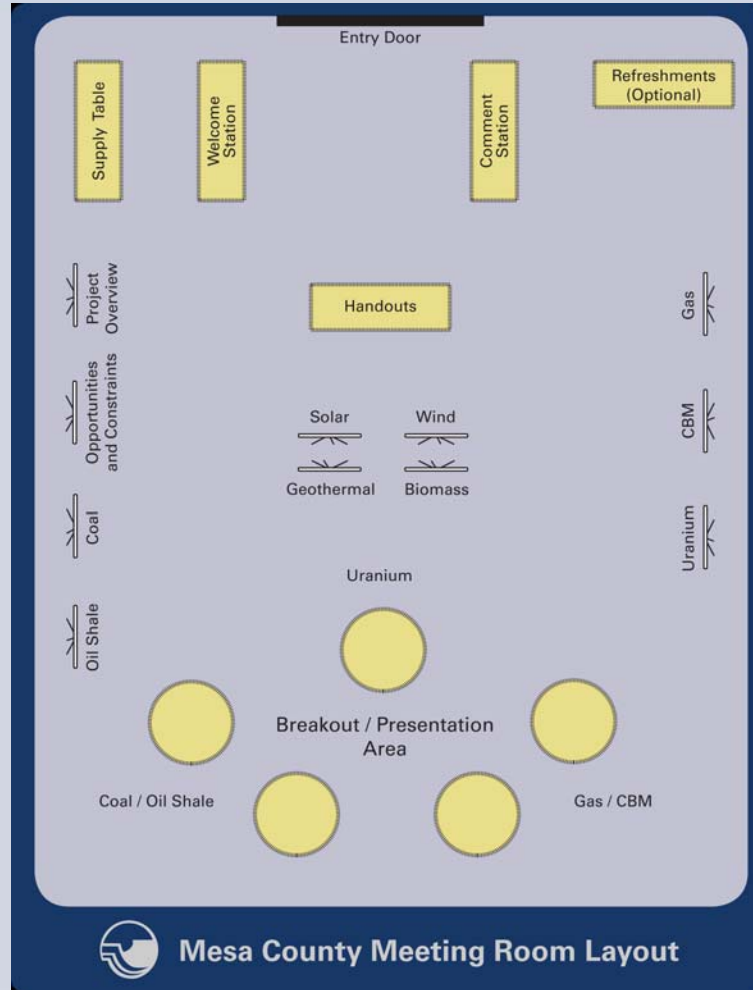
8:30am to 5:30pm at Two Rivers Convention Center Grand Junction, CO

This first ever Western Slope New Energy Economy Conference and Expo is hosted by Mesa State College, City of Grand Junction, Mesa County and Mesa County Valley School District 51.



Mesa County Energy Master Plan

Meeting Layout





Public Forums

January 2009

1. Open House – Please review materials in the room (30 min.)
2. Overview – Presentation (15 min.)
3. Discussion Groups – Breakout Groups – by Resource (45 min.)
Comment Sheets – Group recorder of discussion
4. Group Summaries – Wrap-up (30 min.)



Mesa County Energy Master Plan

Group Discussion Ground Rules

- **Select a recorder and a reporter.**
- **One person speaks at a time. Limit side conversations!**
- **Allow others time to speak.**
- **Listen.**
- **Participate!**



Contact Information

Visit our website:

www.mesacounty.us

click on “Energy Master Plan”

Call (970) 244-1650

Email Mclrange@mesacounty.us