



Mesa County

Dominguez Escalante NCA Proposal

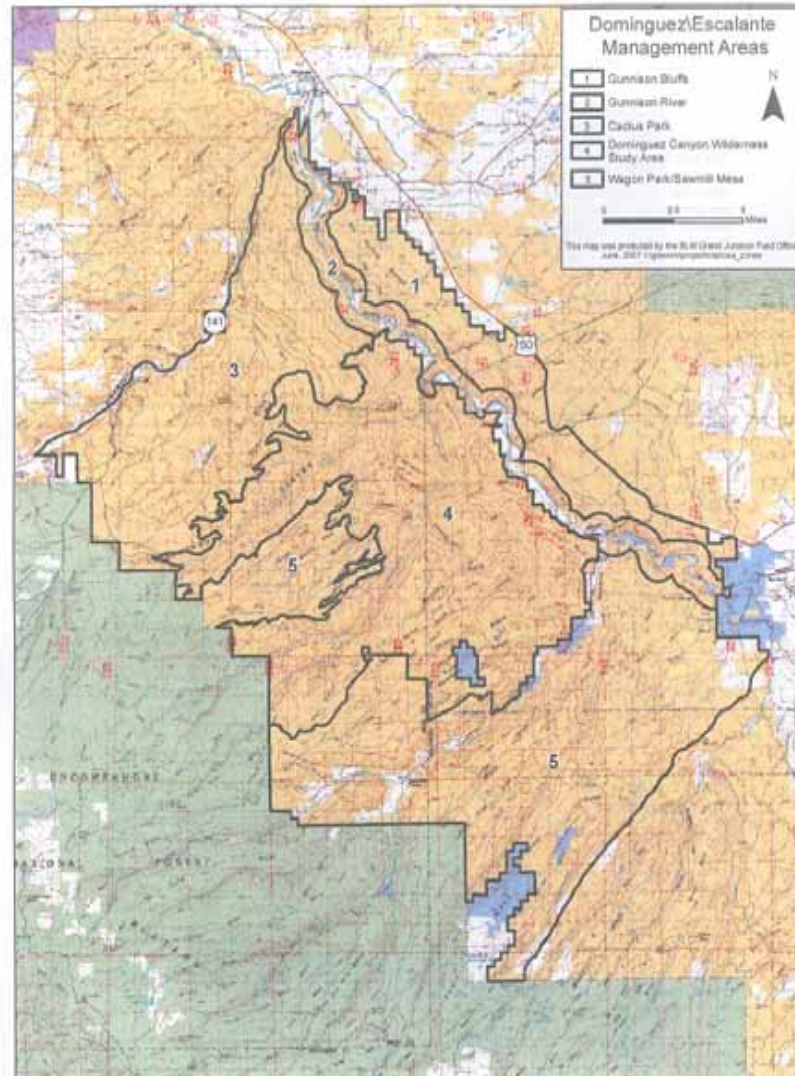


Background

- 2001—Adoption of policy statement by Mesa County supporting designation of Dominguez/Escalante area as National Conservation Area (NCA)
- 2006-2007—Partnership with Mesa, Montrose and Delta counties to conduct public forums to discuss issues with designation
- August 2007—Final report issued by Mesa State College's *Natural Resources and Land Policy Institute* regarding Dominguez Escalante NCA



The Proposed Area





Recommendation and Proposed Resolution

- NCA Designation for Dominguez Escalante Area.
- Existing boundaries of current proposal should be maintained.
- Wilderness Study Area within NCA boundaries should become Wilderness, with the boundary of the Wilderness moved to the edge of the rim along the river corridor.
- Mandate a management plan to settle the use issues raised in this process. Such a management planning process should have heavy public participation.
- Increase resources for management, particularly in the areas of enforcement, dedicated staff and trail improvements.



Additional recommendations in the proposed resolution

- No federal water right will be granted or implied and the provisions of the attached Exhibit “A” are urged for inclusion into the proposed legislation.
- Existing private water rights are recognized and protected for private use.
- Access to private properties within or adjacent to the designated lands will be granted to the private property owner where necessary and physically possible.
- Livestock grazing shall continue as traditionally provided for under law.
- Professionally accepted range management science protocol shall be used for grazing management practices.
- Range improvement projects, including but not limited to vegetation modification, fencing, noxious weed control and water development may occur when conducted under the supervision of the BLM.
- The use of motorized vehicles for livestock grazing and range management purposes can occur as provided for in the appropriate management plan.
- It is appropriate to continue to refer to these lands as the “Dominguez-Escalante National Conservation Area” and the “Dominguez Canyon Wilderness Area.”
- The future management of the Dominguez North Special Management Area should be determined by the public process in the development of the NCA’s management plan and recognize the existing motorized use and backcountry primitive values.



Questions