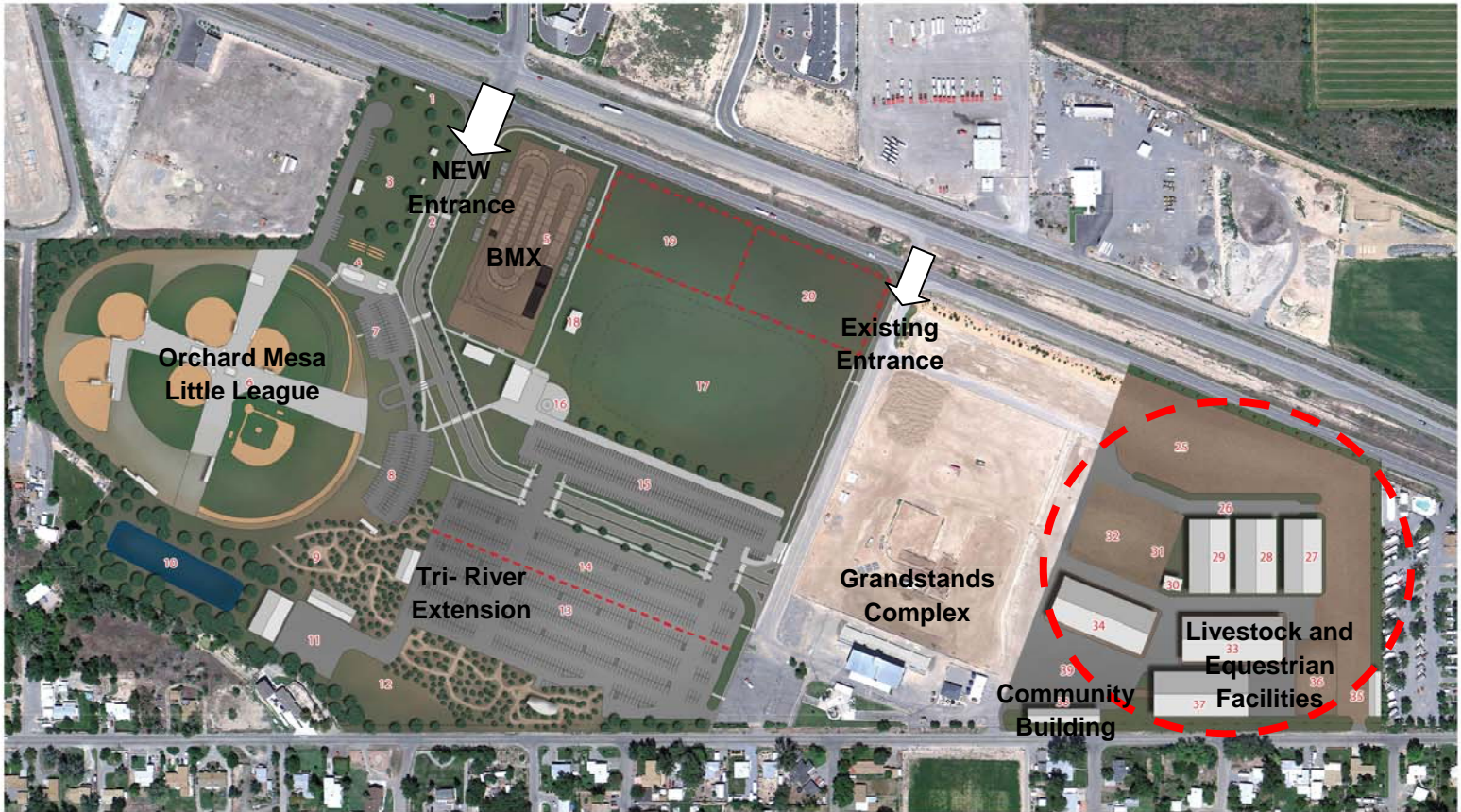


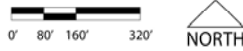


Phase 2



- 1 LED MARQUEE BOARD
- 2 PARK ENTRANCE SIGN
- 3 LION'S PARK
- 4 HORSESHOE PITS
- 5 BMX TRACK
- 6 ORCHARD MESA LITTLE LEAGUE BALLPARK
- 7 NEW BALLPARK PARKING I (62 spaces)
- 8 NEW BALLPARK PARKING II (94 spaces)
- 9 CSU EXTENSION & ARBORETUM
- 10 IRRIGATION POND
- 11 MAINTENANCE YARD
- 12 DOG PARK
- 13 EXISTING PARKING (599 spaces)
- 14 NEW PARKING (220 spaces)
- 15 NEW PARKING (281 spaces)
- 16 VETERAN'S MEMORIAL PARK
- 17 GREENSPACE/MULTI-USE FESTIVAL GROUND
- 18 STAGE
- 19 COMMERCIAL PARCEL A (2.16 ac.)
- 20 COMMERCIAL PARCEL B (2.18 ac.)
- 21 EVENT CENTER DROP OFF
- 22 EVENT CENTER
- 23 EVENT CENTER PARKING (84 spaces)
- 24 NEW PARKING (276 spaces)
- 25 TRAILER PARKING
- 26 LOAD/UNLOAD LANE
- 27 EXISTING BARN (75 stalls)
- 28 NEW BARN I (90 stalls)
- 29 NEW BARN II (90 stalls)
- 30 SHOW OFFICE
- 31 NEW BARN III (90 stalls)
- 32 NEW BARN IV (90 stalls)
- 33 EXISTING COVERED ARENA (120' x 265')
- 34 NEW COVERED ARENA (120' x 265')
- 35 STORAGE BUILDING
- 36 EXISTING OUTDOOR WARM-UP ARENA
- 37 EXISTING LIVESTOCK PAVILION
- 38 EXISTING COMMUNITY BUILDING
- 39 RV SPACES (78 spaces)

POPULOUS™



Phase 2 Development: East Side

Includes improvements and additions to the livestock and equestrian facilities such as two new stall barns and a new covered arena, additional RV spaces for large shows, and reconfiguration of parking and circulation. The grandstands complex will remain during this phase. Development of Phase 2 is expected to occur over 2-4 years.