



Wyoming Survey & Analysis Center  
University of Wyoming  
710 Garfield, Suite 320 • Laramie, WY 82070  
(307) 742-2223 • e-mail: wysac@uwyo.edu

## **MESA COUNTY 2005 CITIZEN ATTITUDE SURVEY**

Final Report to

**County of Mesa, Colorado**

by

Thomas Furgeson, M.A., Assistant Research Scientist

Bistra Anatchkova, Ph. D., Survey Research Center Manager

Burke Grandjean, Ph.D., Executive Director

**Wyoming Survey & Analysis Center**

**University of Wyoming**

with the assistance of

Trish Huckfeldt, Information Specialist

Hristiyan Beshkov, Systems Programmer

**WYSAC Technical Report No. SRC-501**

March, 2005



## Mesa County 2005 Citizen Attitude Survey

### Executive Summary

In January 2005, Mesa County, Colorado, contracted with the Wyoming Survey and Analysis Center (WYSAC) at the University of Wyoming to develop and conduct a citizen attitude telephone survey of Mesa County residents. WYSAC interviewers completed 404 telephone surveys of households within Mesa County, Colorado.

#### Key Findings:

- ◆ Survey respondents are positive about the general quality of life in Mesa County. A large majority of 73.5% believe that quality of life is excellent or good.
- ◆ The overall operation of Mesa County government also rates highly with a majority of respondents, with 60.5% stating that Mesa County government operates very well or well.
- ◆ Nearly two-thirds (73.3%) of survey respondents think that, over the past 3 years, Mesa County quality of life has either stayed the same or has improved.
- ◆ Majorities of survey respondents rated 11 of 15 Mesa County services very good or good. The remaining four services were rated as average or above average by respondent majorities.
- ◆ Protective services for children and adults were rated positively by significantly fewer females (54.1%) than males (68.6%).
- ◆ Mesa County services about which survey respondents were most divided include land use planning (35.9% positive, 32.2% negative) and zoning enforcement (34.5% positive, 33.4% negative).
- ◆ Ease of travel as a motorist in Mesa County was rated as average or above average by a large majority (81.5%) of respondents, as was ease of travel as a pedestrian (84.5%). Respondents were divided, however, on ease of travel by bicycle: nearly as many respondents rated this negatively (34.4%) as positively (35.6%).
- ◆ Most (67.5%) survey respondents believe that Mesa County is doing a very good or good job with conservation of open space.

- ◆ Job opportunities and availability of affordable housing in Mesa County were generally rated negatively by survey respondents. While 46% of respondents rated job opportunities as average or better, 54% stated that such opportunities are very poor or poor. Availability of affordable housing was rated as very poor or poor by 47% of respondents. Though rated negatively overall by both sexes, significantly more (29.9%) males than females (17.8%) positively rated the availability of affordable housing.
- ◆ Air quality and outdoor recreational opportunities were rated as very good or good by majorities of survey respondents.
- ◆ A large majority (78.2%) of respondents said they feel very safe or safe in their Mesa County neighborhoods, and a majority (60.1%) also said they had very high or high confidence in the ability of the Sheriff's Department to provide effective emergency assistance.
- ◆ Significantly fewer (73.6%) females stated they felt very safe or safe in their neighborhoods than did males (84.8%).
- ◆ Of several choices for most serious crime problems in their neighborhoods, respondents rated theft and burglary highest (18%) and drug abuse second highest (14.5%). More respondents (43.6%) stated that their neighborhoods had no serious crime problems than chose any other possible response.
- ◆ Majorities of survey respondents either strongly agreed or agreed that Mesa County should purchase land to maintain open space (74.4%), should require strict adherence to land use plans (84.8%), and should decrease the number of houses allowed per acre in unincorporated Mesa County (70%).
- ◆ A large majority (70.1%) of respondents reported that they do not support a new tax for growth management and purchase of development rights. However, majorities stated that tax dollars (54.2%) and lottery dollars (70.3%) should be used to fund the purchase of development rights program.
- ◆ Majorities of survey respondents strongly agreed or agreed that Mesa County should use county funds to encourage new companies to relocate to the County (61.8%), to help current local businesses expand (70%), and to subsidize the building of low and moderate income housing (67.6%).
- ◆ Of ten items available for comparison between 2003 and 2005, eight showed substantial improvement while only two showed substantial decline.

- ◆ Survey items that received higher ratings of very good or good in 2005 than in 2003 include: protective services and economic assistance programs for children and adults; land use planning; and conservation of open space. Items for which ratings of very good or good declined include public transportation and availability of affordable housing.
- ◆ Survey items that received higher ratings of strongly agree or agree in 2005 than in 2003 include two items about Mesa County employees. Improvement was shown in items indicating that County employees respond quickly to questions and concerns, that employees are well informed and skilled in their service areas, and that Mesa County services are completed quickly and efficiently.
- ◆ Items showing generally lower ratings as age increases include: overall operation of Mesa County government; support for a new tax for growth management and purchase of development rights; and use of County funds to help current businesses expand.
- ◆ Items that received generally higher ratings as age increases include: overall quality of life in Mesa County; protection of public health; services offered through Tri-River extension programs; and confidence in emergency assistance ability of the Sheriff's Department.
- ◆ Length of residence in Mesa County is significantly related to lower ratings for several survey items. Generally, the longer a respondent has lived in the County, the lower their ratings for: traffic control, ease of motor travel; conservation of open space; air quality; availability of affordable housing; and use of county funds to help established local businesses to expand.
- ◆ Whether a respondent lives within or outside city or town limits is related to higher ratings for the following survey items: public transportation; Mesa County should set specific architectural or building standards for commercial buildings; and Mesa County government works well with other local governments to get things done. Positive ratings for feelings of safety in one's neighborhood are significantly lower for those living within city or town limits than for those who live outside city or town limits.

## **Mesa County 2005 Citizen Attitude Survey**

In January 2005, Mesa County, Colorado, contracted with the Wyoming Survey & Analysis Center (WYSAC) at the University of Wyoming to develop and conduct a citizen attitude telephone survey of Mesa County residents. Mesa County's primary interests are citizen perceptions regarding quality of life in Mesa County, and citizen attitudes and opinions regarding County services and current County policy issues. Results of this survey are intended to inform the 2005 strategic planning process of the Mesa County Board of County Commissioners. This report presents the results of the Mesa County 2005 Citizen Attitude Survey.

### **Methods**

#### **Questionnaire Development and Deployment**

Based largely on Mesa County's 2003 Citizen Attitude Survey, the current survey instrument was developed by WYSAC in collaboration with Mesa County officials during the first weeks of January 2005. Mesa County provided WYSAC with a copy of the original 2003 survey annotated with additions and deletions appropriate for the 2005 iteration. These changes were incorporated by WYSAC into a new survey instrument subsequently approved by Mesa County.

Interviews were completed by WYSAC's trained interviewers using computer assisted telephone interviewing (CATI) in the evening hours between January 13 through January 20, 2005, including the Sunday afternoon of January 10<sup>th</sup>. The original sample fed into the CATI system included telephone numbers from each Mesa County zip code, 16 of which ultimately were represented in the sample of completed surveys. The survey yielded 404 complete interviews with Mesa County citizens. A random sample of this size produces a statistical margin of error of plus or minus 5 percentage points, with 95% confidence.

#### **Sampling Frame**

Unlike Mesa County's 2003 Citizen Attitude Survey which included only listed telephone numbers in its random sample, the 2005 survey used a random sample consisting of both listed and random digit dialing (RDD) phone numbers. Research has clearly established that the use of RDD provides more representative coverage than samples of only listed numbers, since an RDD sample will additionally include unlisted numbers.

To meet these higher standards while also assessing comparability of the results across time, the sample used in 2005 consisted of both listed and RDD numbers of Mesa county households. Before proceeding with any other analysis, all items of the 2005 questionnaire were tested for statistically significant differences by type of sample. On all

but five items the differences observed between the listed and the RDD samples proved to be insignificant ( $p > 0.05$ ). With upwards of 60 such statistical tests having been performed, chance alone would lead to about 3 or 4 significant differences despite no true differences in the populations from which the samples were drawn. The significance tests therefore justify combining the RDD and listed samples when reporting results. For the five items where the differences between the listed and RDD samples were statistically significant, results for the listed sample are presented separately in Appendix 1, alongside the combined results

Telephone numbers where no adult was present, or that rang busy, were answered with answering machines, or produced no answer were reattempted up to eight times before removal from the sample. Initial refusals were called again in an attempt to secure interviews.

### **Qualifying questions**

Respondents to this survey, upon agreeing to participate, were asked the following three qualifying questions: 1) Is this a private residence in Mesa County, Colorado?; 2) Are you 18 or older?; and, 3) Do you or an immediate family member work for Mesa County? By design, all 404 respondents in the 2005 survey reside in Mesa County, are at least 18 years of age, and are not themselves employed by Mesa County or immediately related to a County employee.

## **Organization of this Report**

The report that follows presents the results from the 2005 in detail and where appropriate comparisons with results from the 2003 survey.

*Section 1* is dedicated to the demographic characteristics of the 2005 sample, presented alongside comparable earlier data. *Sections 2* through *5* present results from the current survey in graphs and tables of frequency counts and percentage distributions of responses, grouped thematically. *Section 6* is a comparison of selected 2003 and 2005 survey results, and *Section 7* presents cross-tabulations of some background variables with relevant items from the survey.

*Appendix 1* contains the raw frequency counts and the percentage distributions of responses to all items on the 2005 questionnaire, presented in the order and with the wording used during the telephone interviews. *Appendices 2-4* contain all responses given to the open-ended survey questions.

## **Presentation of Data**

Those questions exhibiting statistically significant differences between listed and RDD samples are presented in two tables: listed and RDD samples responses combined, and listed sample responses separately.

Missing data such as "Refused" or "Don't Know/No Opinion" are excluded from the percentage calculations in order to determine the 'valid percent', which is the proportion of those who offered a substantive response to a given question. Retention of missing responses—particularly if the number is high—can significantly distort response percentage calculations. An example in the current survey is "Ease of travel as a pedestrian," where the response *Average* totals 33.8% when non-responses (n = 55) are excluded. Retention of the 55 *Don't Know/No Opinion* responses for this question would yield 29.2% for the same answer.

In the report for the 2003 Citizen Attitude Survey for Mesa County, percentages presented include missing data. In order to accurately present longitudinal comparisons, 2003 data have, where appropriate, been recalculated to adjust for the missing data and determine valid percentages. Additionally, the 2003 report includes demographic data from the 2000 survey, percentages for which have also been recalculated to allow for a three-survey comparison of specific demographic data. These demographic data for previous surveys are presented alongside 2005 data in Section 1.

Specific tests of statistical significance were not performed when comparing the 2005 results to the 2003 report. With sample sizes of around 400 respondents for each survey (2003 = 392; 2005 = 404), differences of 7 percentage points or more generally would be expected to test as statistically significant, with 95% confidence. Therefore, items with this much change are arranged in two tables comparing 2003 and 2005 results in Section 6, following presentation of 2005 survey results in the preceding 5 sections. These tables are identical in format. In each table, positive responses are combined (e.g.: very good and good) for each question to yield a generally positive figure for comparison; presence or absence of improvement is noted; and the percentage point change from 2003 to 2005 is given in the final column.

Cross-tabulations were performed and are presented in a slightly different manner. All variables were first rendered dichotomous by collapsing the positive responses to survey questions into a single category (e.g. Very Good and Good = Good, etc.) and then cross tabulations were performed against the background variables of interest --respondent sex, age, length of residence in Mesa County, whether respondents reside within or outside of town or city limits, and area. Then tests of statistical significance of the differences observed were performed on all. Presented in Section 7 are the results for those that proved statistically significant ( $p < 0.05$ ). For the "area" variable, only those areas within Mesa County with a sample size equal to or greater than 30 are considered separately (Grand Junction, Fruita and Clifton), and all other regions are combined into the category *Other*.

## Section 1: Demographic Information

Demographic data were collected for respondent age, gender and length of residence in Mesa County. Where data from previous surveys are available, they are presented along with current results for comparison. With the exception of age, the demographic profile of Mesa County residents in the 2005 sample is generally similar to sample profiles of earlier surveys.

**AGE:** For the surveys conducted in 2000 and 2003, the demographic age group with the highest number of respondents is that of 65 or older (Table 1.1; Figure 1.1). For 2005, more respondents (26.4%) are within the 45-54 year old age group. This is an upward trend (11.3 percentage points) from 2000 to 2005 in response frequency for this age category, possibly suggesting a higher number of younger people in Mesa County than in earlier years. Generally, the age of respondents for 2005 is more evenly distributed than in 2003 or 2000.

**GENDER:** All surveys—2000, 2003 and 2005—have markedly more female than male respondents. The difference for 2005 between male and female respondents is 15 percentage points (Table 1.2; Figure 1.2). This is a common occurrence in telephone surveys, since women are generally more responsive to phone inquiries.

**LENGTH OF RESIDENCE IN MESA COUNTY:** For the current survey, the greatest proportion of respondents (40.0%) has been in Mesa County for at least 21 years, while the next most represented group (22.6%) is at the opposite end of the scale, having resided in Mesa County for 1 to 5 years (Table 1.3; Figure 1.3). This is also the case with both the 2000 and 2003 survey results. All three years for which this demographic information was collected show very similar distributions.

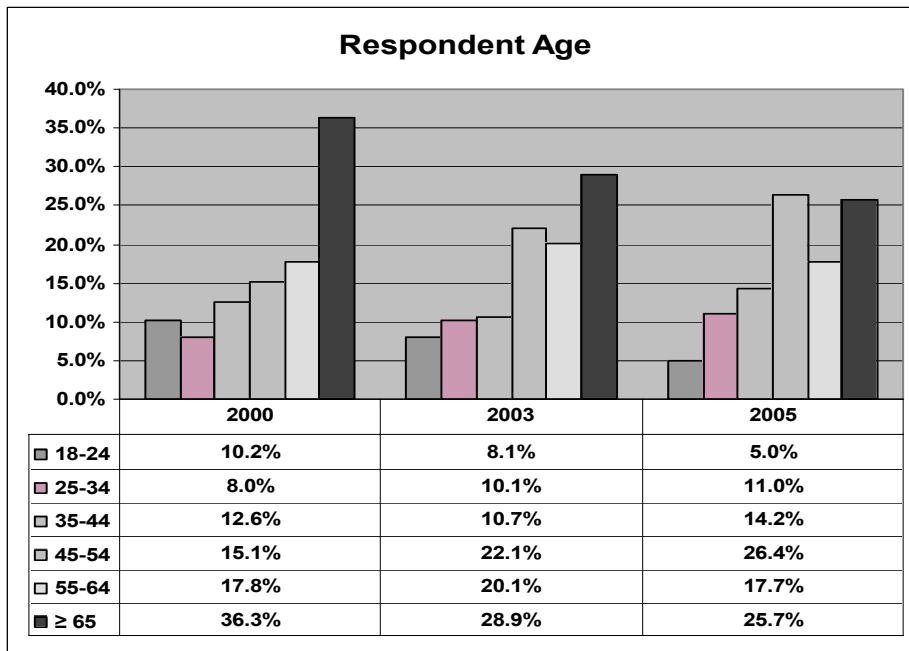
**RESIDE WITHIN LIMITS OF CITY OR TOWN:** The proportion of 2005 survey respondents who live within city or town limits is nearly identical to that for 2003 (63.3% and 62.4%, respectively; see Table 1.4; Figure 1.4). The profile of survey respondents for both years shows nearly two-thirds city- or town-dwellers.



**Table 1.1: Respondent Age**

	2000		2003		2005	
	Frequency	Valid Percent	Frequency	Valid Percent	Frequency	Valid Percent
18 to 24	33	10.2%	31	8.1%	20	5.0%
25 to 34	26	8.0%	39	10.1%	44	11.0%
35 to 44	41	12.6%	41	10.7%	57	14.2%
45 to 54	49	15.1%	85	22.1%	106	26.4%
55 to 64	58	17.8%	77	20.1%	71	17.7%
65 and older	118	36.3%	111	28.9%	103	25.7%
Total Valid	325	100%	384	100%	401	100.0%
(Refused)	2		7		3	
Total	327		391		404	

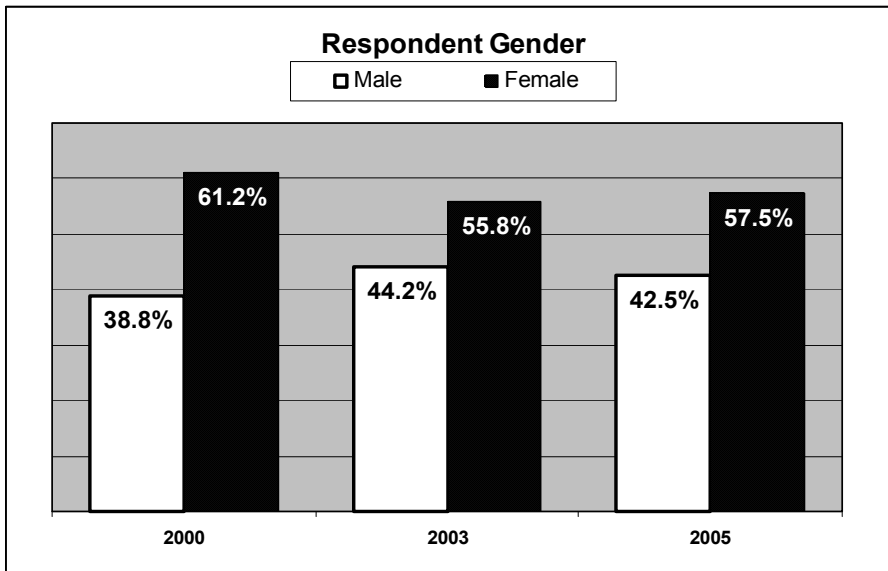
**Figure 1.1: Respondent Age**



**Table 1.2: Respondent Gender**

	2000		2003		2005	
	Frequency	Valid Percent	Frequency	Valid Percent	Frequency	Valid Percent
Male	127	38.8%	172	44.2%	171	42.5%
Female	200	61.2%	217	55.8%	231	57.5%
Total Valid	327	100.0%	389	100.0%	402	100.0%
(Can't Tell)					2	
Total					404	

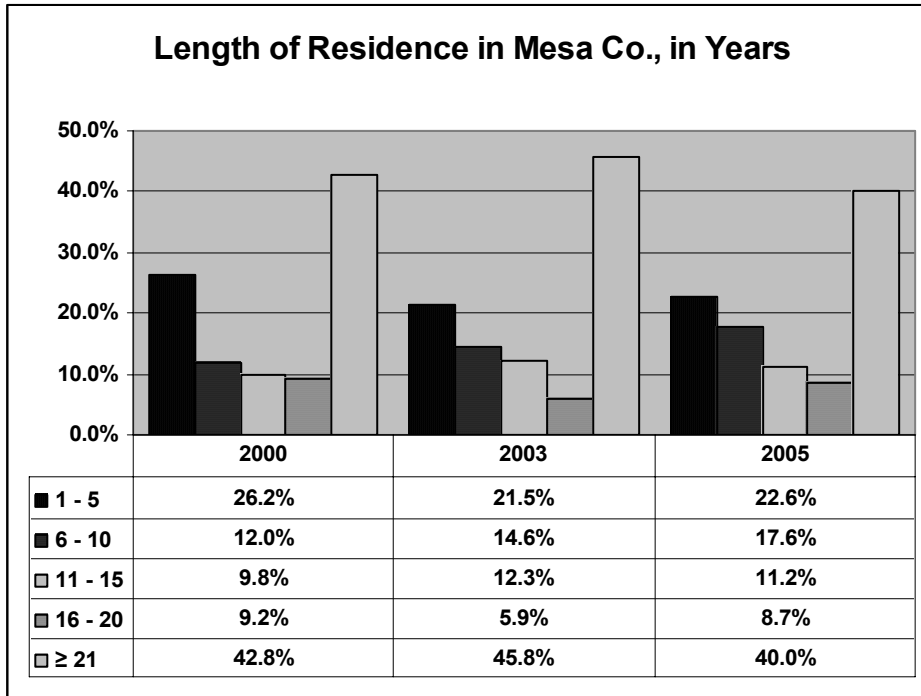
**Figure 1.2: Respondent Gender**



**Table 1.3: Respondent Length of Residence in Mesa County**

	2000		2003		2005	
	Frequency	Valid Percent	Frequency	Valid Percent	Frequency	Valid Percent
1 to 5 years	85	26.2%	84	21.5%	91	22.6%
6 to 10 years	39	12.0%	57	14.6%	71	17.6%
11 to 15 years	32	9.8%	48	12.3%	45	11.2%
16 to 20 years	30	9.2%	23	5.9%	35	8.7%
More than 21 years	139	42.8%	179	45.8%	161	40.0%
Total Valid	325	100.0%	391	100%	403	100.0%
(No Response)	2		1		1	
Total	327		392		404	

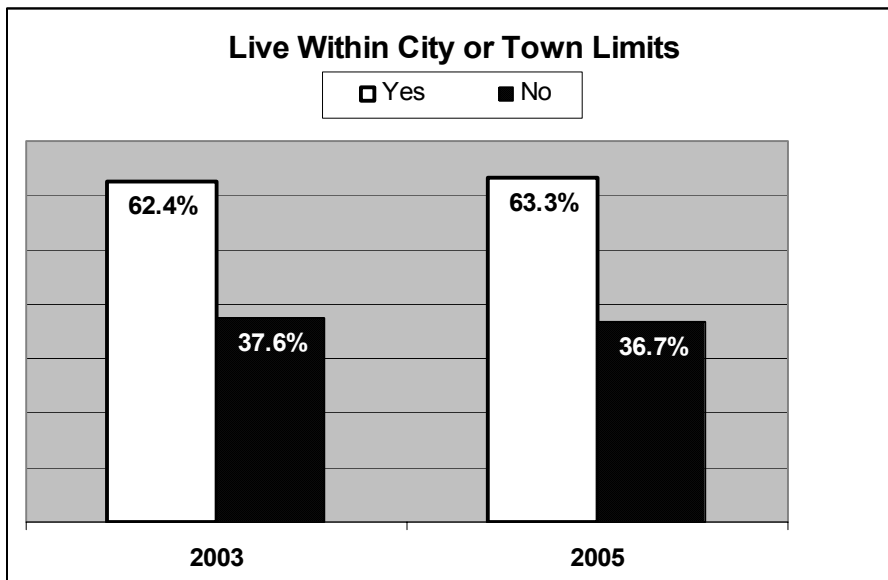
**Figure 1.3: Respondent Length of Residence in Mesa County**



**Table 1.4: Respondent Lives within Limits of City or Town**

	2003		2005	
	Frequency	Valid Percent	Frequency	Valid Percent
Yes	241	62.4%	255	63.3%
No	145	37.6%	148	36.7%
Total Valid	386	100.0%	403	100.0%
(Don't Know/No Response)	5		1	
Total	391		404	

**Figure 1.4: Respondent Lives within Limits of City or Town**



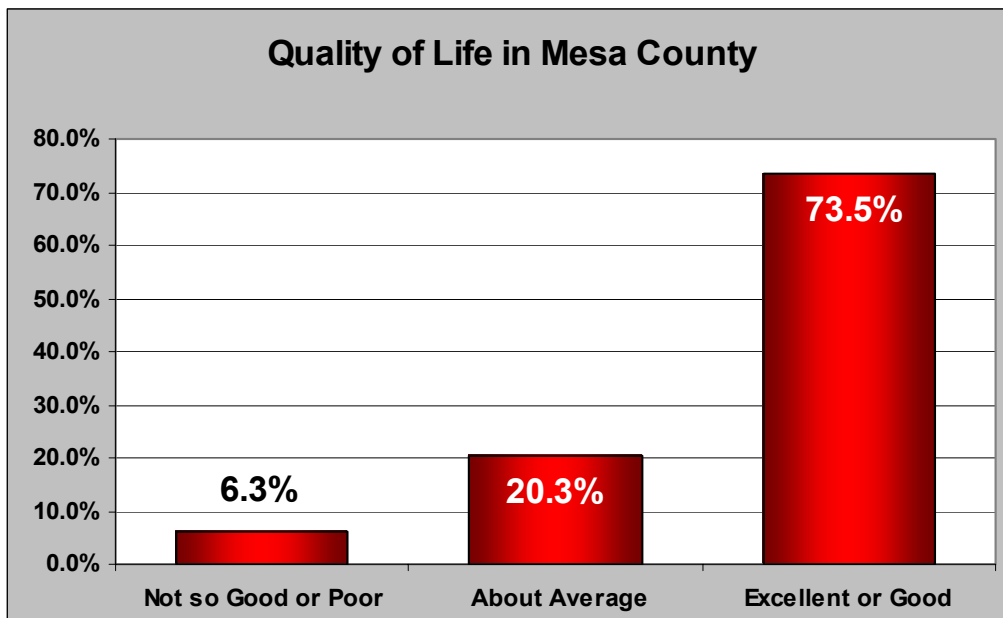
## Section 2: 2005 Quality of Life and Overall County Operations

Two questions were asked of survey respondents to gauge general perceptions of quality of life in Mesa County, and one question was asked regarding overall satisfaction with Mesa County government. The results of these general questions (survey questions 3, 4 & 5) are presented in the tables and graphs below. Survey question numbers appear in the upper left of the tables.

**Table 2.1: Overall quality of life in Mesa County is...**

Q3	Frequency	Valid Percent
Excellent	80	20.1%
Good	213	53.4%
About Average	81	20.3%
Not So Good	17	4.3%
Poor	8	2.0%
Total Valid	399	100.0%
(No Opinion/No Response)	5	
Total	404	

**Figure 2.1: Overall quality of life in Mesa County is...**

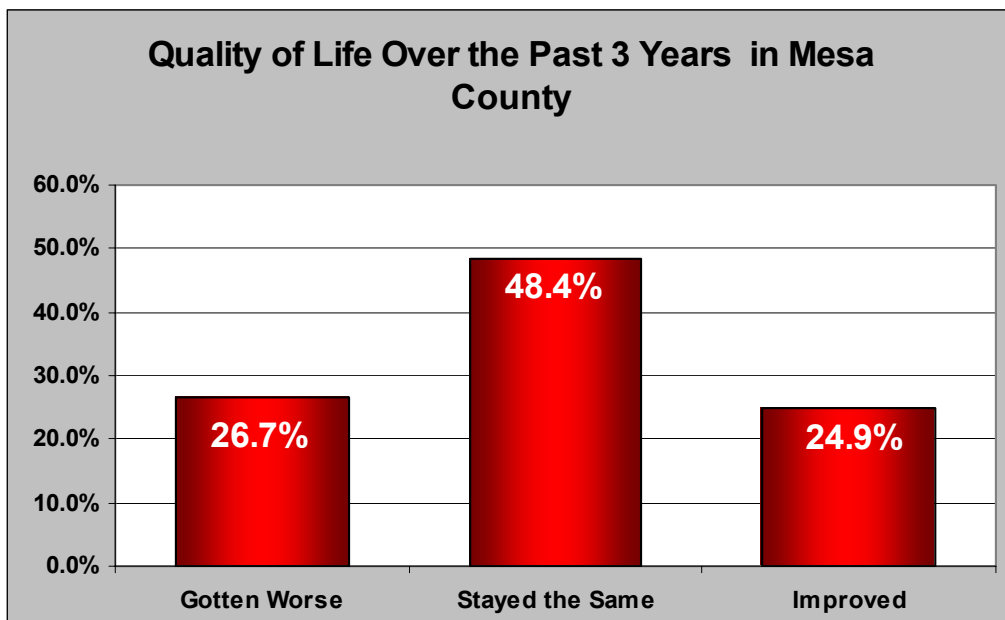


A large majority (73.5%) of survey respondents rated Mesa County quality of life as either excellent or good. 93.8% of those surveyed believe Mesa County quality of life is average or above average.

**Table 2.2: Quality of life over the past 3 years has...**

Q4	Frequency	Valid Percent
Improved	95	24.9%
Stayed the Same	185	48.4%
Gotten Worse	102	26.7%
Total Valid	382	100.0%
(No Opinion/No Response)	22	
Total	404	

**Figure 2.2: Quality of life over the past 3 years has...**

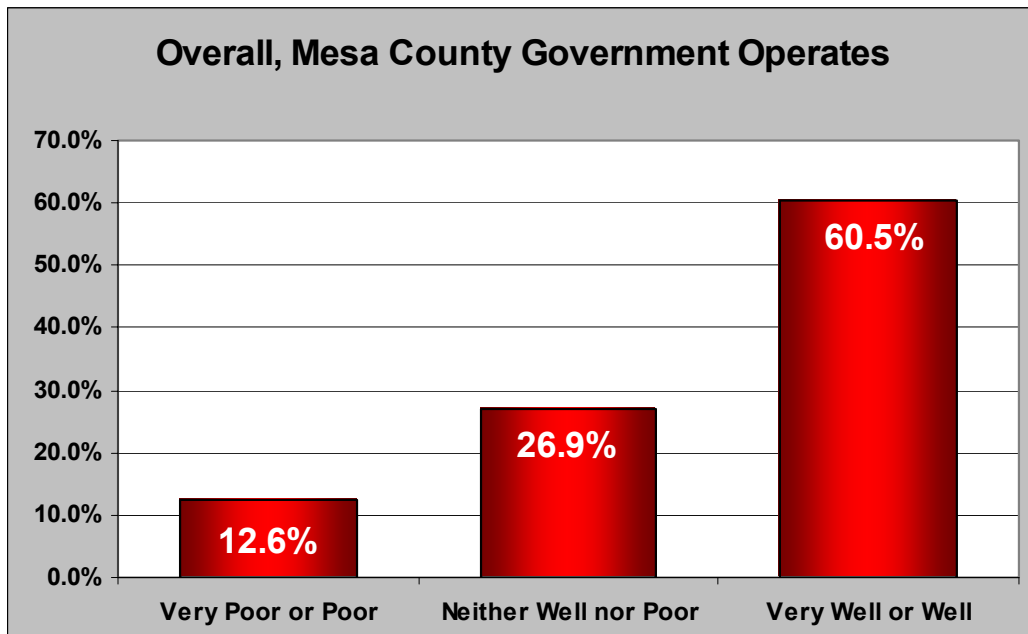


Nearly half (48.4%) of County residents believe the quality of life has stayed about the same for the past three years, while the remainder of respondents are about evenly split on whether quality of life has improved (24.9%) or gotten worse (26.7%).

**Table 2.3: Overall, Mesa County government operates...**

Q5	Frequency	Valid Percent
Very Well	34	8.8%
Well	200	51.7%
Neither Well Nor Poor	104	26.9%
Poor	40	10.3%
Very Poor	9	2.3%
Total Valid	387	100.0%
(Don't Know/No Response)	17	
Total	404	

**Figure 2.3: Overall, Mesa County government operates...**



Mesa County government operation rated very well or well for a majority (60.5%) of survey respondents.

### Section 3: County Services

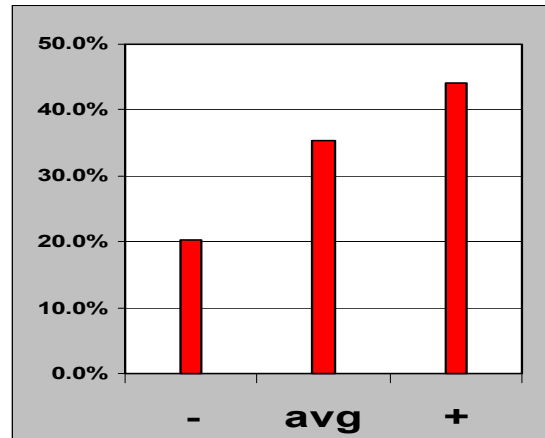
Survey respondents were asked to rate fourteen specific services provided by Mesa County on the following scale: *Very Good, Good, Average, Poor* or *Very Poor*. Respondents were also asked for their opinions about service accessibility, how well Mesa County employees represent and provide these services, and how well Mesa County government works with other local governments on a scale of *Strongly Agree, Agree, Neither Agree nor Disagree, Disagree, Strongly Disagree*. These items are presented in the following tables along with graphs indicating general respondent attitudes. Survey question numbers appear in the upper left of the tables.

In the graphs for the first set of questions (6A through 7), "-" is for answers Very Poor and Poor; "avg" for Average; and "+" for Very Good and Good. For the second set of questions (8A through 8F), "-" is for answers Disagree and Strongly Disagree; "neut." for Neither Agree nor Disagree; and "+" for Agree and Strongly Agree.

**Table 3.1: Road maintenance and repair is...**

Q6A	Frequency	Valid Percent
Very Good	22	5.5%
Good	155	38.7%
Average	142	35.4%
Poor	75	18.7%
Very Poor	7	1.7%
Total Valid	401	100.0%
(Don't Know/No Opinion)	3	
Total	404	

**Figure 3.1: Road maintenance and repair is...**



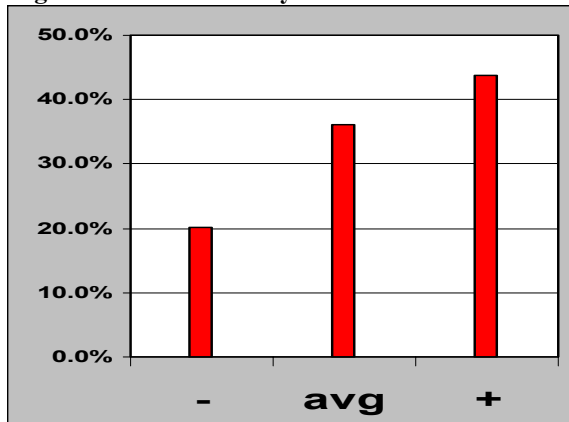
Those who think that road maintenance and repair is very good or good account for 44.2% of survey respondents. A large majority (79.6%) of respondents stated that this service is average or above.



**Table 3.2: Mesa County traffic control is...**

Q6B	Frequency	Valid Percent
Very Good	21	5.3%
Good	153	38.4%
Average	144	36.2%
Poor	64	16.1%
Very Poor	16	4.0%
Total Valid	398	100.0%
(Don't Know/No Opinion)	6	
Total	404	

**Figure 3.2: Mesa County traffic control is...**

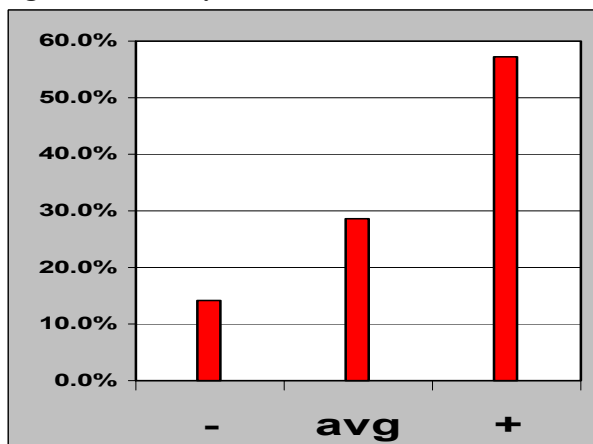


The percentage of respondents holding a favorable view of County traffic control is 43.7%, while 20.1% of residents believe that Mesa County traffic control rates as very poor or poor.

**Table 3.3: County animal control is...**

Q6C	Frequency	Valid Percent
Very Good	37	10.3%
Good	168	46.9%
Average	102	28.5%
Poor	38	10.6%
Very Poor	13	3.6%
Total Valid	358	100.0%
(Don't Know/No Opinion)	46	
Total	404	

**Figure 3.3: County animal control is...**

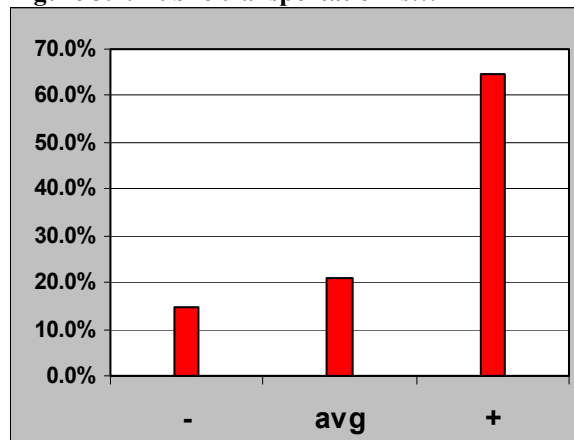


Over half (54.9%) of survey respondents stated that animal control as provided by the County is good or very good. A large majority (82.1%) give Mesa County a rating of average or above for this service.

**Table 3.4: Public transportation is...**

Q6D	Frequency	Valid Percent
Very Good	49	14.2%
Good	174	50.4%
Average	72	20.9%
Poor	43	12.5%
Very Poor	7	2.0%
Total Valid	345	100.0%
(Don't Know/No Opinion)	59	
Total	404	

**Figure 3.4: Public transportation is...**

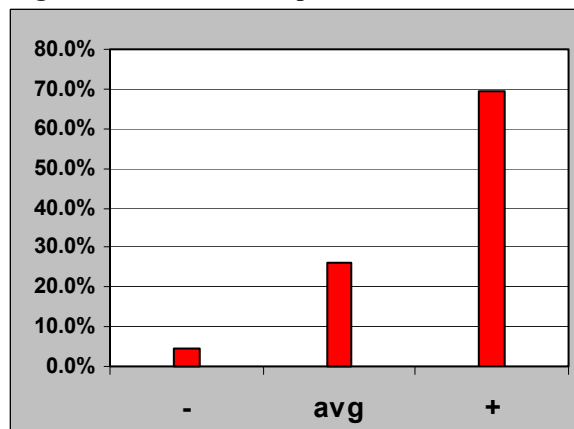


Satisfaction with public transportation is quite high, with a majority (64.6%) of survey respondents rating this service as very good or good, and 85.5% rating it average or above average.

**Table 3.5: Protection of public health is...**

Q6E	Frequency	Valid Percent
Very Good	62	16.4%
Good	201	53.0%
Average	99	26.1%
Poor	15	4.0%
Very Poor	2	.5%
Total Valid	379	100.0%
(Don't Know/No Opinion)	25	
Total	404	

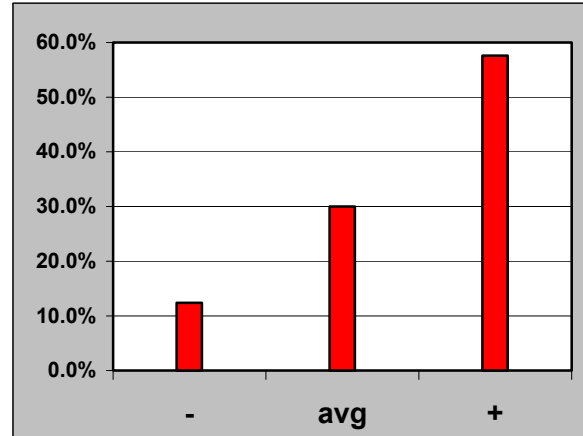
**Figure 3.5: Protection of public health is...**



Survey respondents were overwhelmingly satisfied with Mesa County’s protection of public health, with a large majority rating this service as average or above (95.5%), and 69.4% rating it very good or good.

**Table 3.5 / Figure 3.5: Mesa County economic assistance programs for children and adults are...**

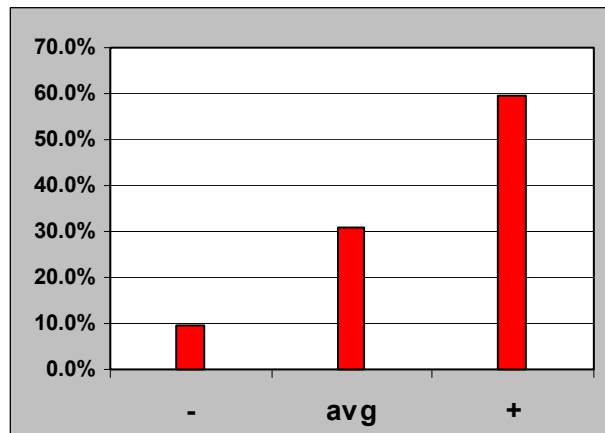
Q6F	Frequency	Valid Percent
Very Good	37	13.6%
Good	120	44.0%
Average	82	30.0%
Poor	26	9.5%
Very Poor	8	2.9%
Total Valid	273	100.0%
(Don't Know/No Opinion)	131	
Total	404	



Mesa County was rated very good or good by a majority (57.6%) of respondents for providing economic assistance for children and adults. 87.6% of survey respondents rated this service as average or above.

**Table 3.6 / Figure 3.6: Protective services for children and adults are...**

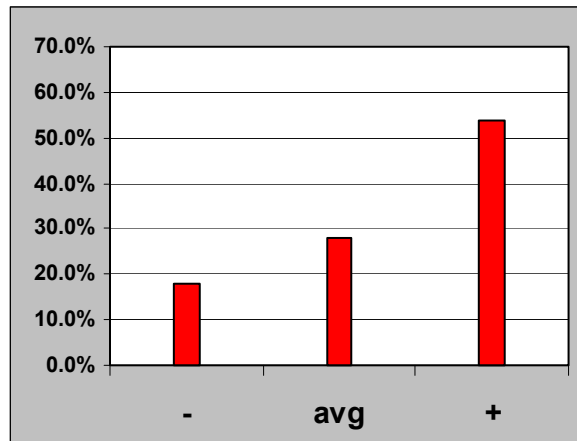
Q6G	Frequency	Valid Percent
Very Good	43	12.7%
Good	159	47.0%
Average	104	30.8%
Poor	26	7.7%
Very Poor	6	1.8%
Total Valid	338	100.0%
(Don't Know/No Opinion)	66	
Total	404	



Similar to economic assistance for children and adults was protective services for children and adults in the opinions of survey respondents. A majority rated this service as very good or good (59.7%), with 89.7% rating it as average or above.

**Table 3.7 / Figure 3.7: Employment services or assistance provided through the workforce center are...**

Q6H	Frequency	Valid Percent
Very Good	38	14.4%
Good	104	39.5%
Average	74	28.1%
Poor	32	12.2%
Very Poor	15	5.7%
Total Valid	263	100.0%
(Don't Know/No Opinion)	141	
Total	404	

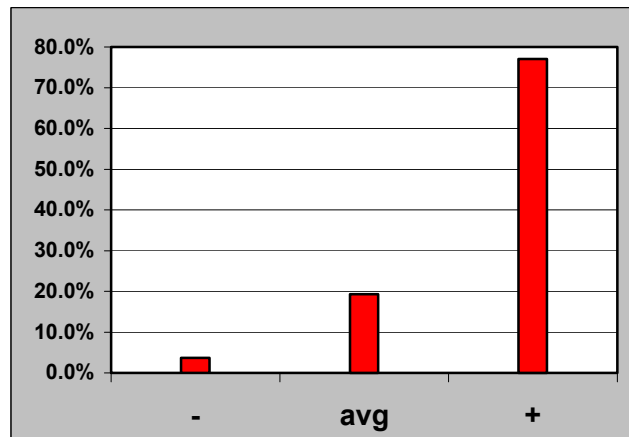


Employment services or assistance through the workforce center was rated very good or good by 53.9% of survey respondents. A large majority (82.0%) consider these services to be average or above.

**Table 3.8: Landfill operations are...**

Q6I	Frequency	Valid Percent
Very Good	65	19.9%
Good	186	57.1%
Average	63	19.3%
Poor	11	3.4%
Very Poor	1	.3%
Total Valid	326	100.0%
(Don't Know/No Opinion)	78	
Total	404	

**Figure 3.8: Landfill operations are....**

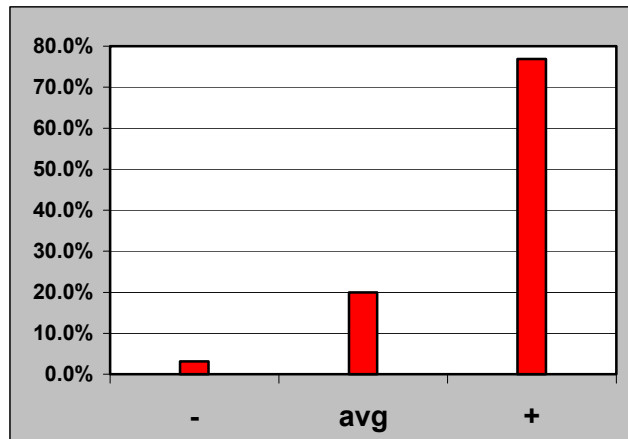


Landfill operations by Mesa County were rated as very good or good by 77.0% of survey respondents, with nearly all (96.3%) of them rating this service as average or above.

**Table 3.9: Motor vehicle registration is...**

Q6J	Frequency	Valid Percent
Very Good	68	17.4%
Good	232	59.5%
Average	78	20.0%
Poor	9	2.3%
Very Poor	3	.8%
Total Valid	390	100.0%
(Don't Know/No Opinion)	14	
Total	404	

**Figure 3.9: Motor vehicle registration is...**

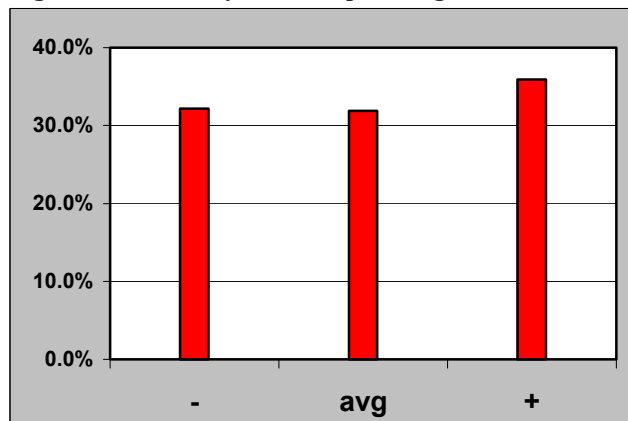


Nearly all survey respondents (96.9%) rated motor vehicle registration as average or above, with 76.9% of them giving a rating of very good or good.

**Table 3.10: County land use planning is...**

Q6K	Frequency	Valid Percent
Very Good	18	5.2%
Good	106	30.7%
Average	110	31.9%
Poor	87	25.2%
Very Poor	24	7.0%
Total Valid	345	100.0%
(Don't Know/No Opinion)	59	
Total	404	

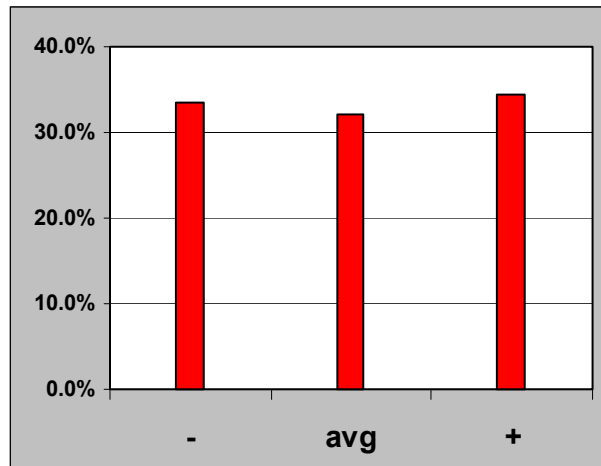
**Figure 3.10: County land use planning is...**



Land use planning received nearly equal levels of positive (35.9%), average (31.9%) and negative (32.2%) ratings, with slightly more survey respondents rating this service positively than otherwise. While 67.8% rated land use planning as average or above, nearly a third of respondents are somewhat or very unhappy with this service.

**Table 3.11 / Figure 3.11: Mesa County zoning enforcement is...**

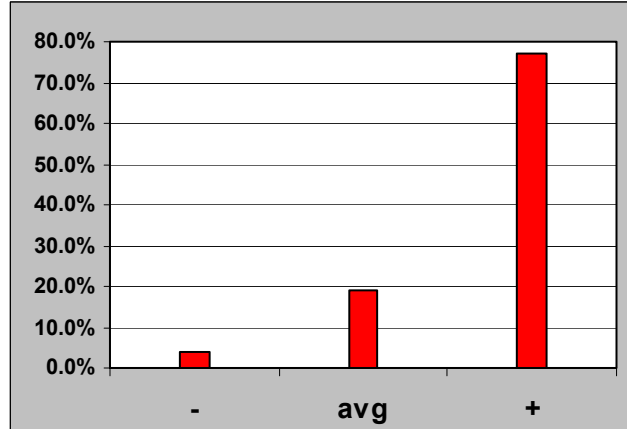
Q6L	Frequency	Valid Percent
Very Good	19	5.3%
Good	104	29.2%
Average	114	32.0%
Poor	90	25.3%
Very Poor	29	8.1%
Total Valid	356	100.0%
(Don't Know/No Opinion)	47	
(No Response)	1	
Total	404	



As with land use planning, zoning enforcement is generally level across the three categories of positive (34.5%), average (32.0%) and negative (33.4%). Over a third of respondents are somewhat or very unhappy with this service, while 66.5% rated zoning enforcement as average or above.

**Table 3.12 / Figure 3.12: Services offered through Tri-River Cooperative Extension programs are...**

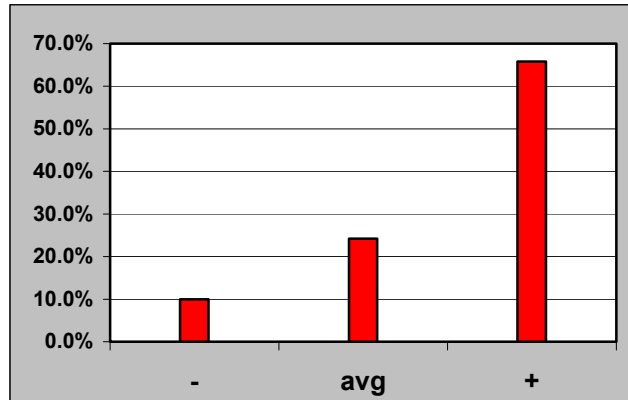
Q6M	Frequency	Valid Percent
Very Good	60	24.9%
Good	126	52.3%
Average	46	19.1%
Poor	8	3.3%
Very Poor	1	.4%
Total Valid	241	100.0%
(Don't Know/No Opinion)	163	
Total	404	



There is a high level of satisfaction among survey respondents with services offered through Tri-River Cooperative Extension programs, with 77.2% rating these services as very good or good. The vast majority (96.3%) considers these services to be at or above average.

**Table 3.13 / Figure 3.13: Operation of County fair grounds is...**

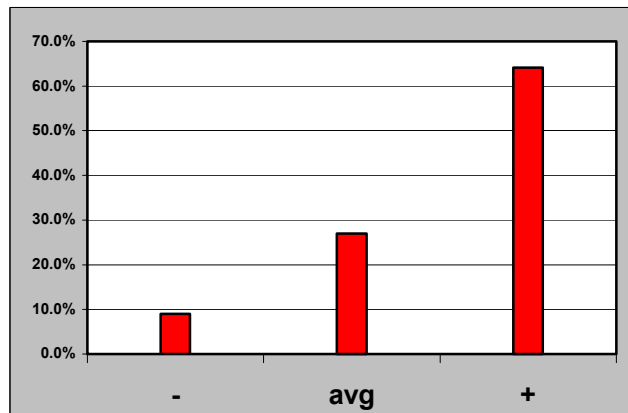
Q6N	Frequency	Valid Percent
Very Good	38	13.5%
Good	147	52.3%
Average	68	24.2%
Poor	23	8.2%
Very Poor	5	1.8%
Total Valid	281	100.0%
(Don't Know/No Opinion)	123	
Total	404	



County fairground operation by Mesa County received a high rating of satisfaction from survey respondents. 90.0% stated that fairground operations are average or above average, and 65.8% rated this service as very good or good.

**Table 3.14 / Figure 3.14: Programming provided on Mesa County cable channel 12 is...**

Q6O	Frequency	Valid Percent
Very Good	30	16.9%
Good	84	47.2%
Average	48	27.0%
Poor	11	6.2%
Very Poor	5	2.8%
Total Valid	178	100.0%
(Don't Know/No Opinion)	226	
Total	404	



A majority of 64.1% of survey respondents rate the programming on cable channel 12 as very good or good, while 91.1% rated this service as average or above average. Table 3.15 below details the popularity of various programs offered on cable channel 12.

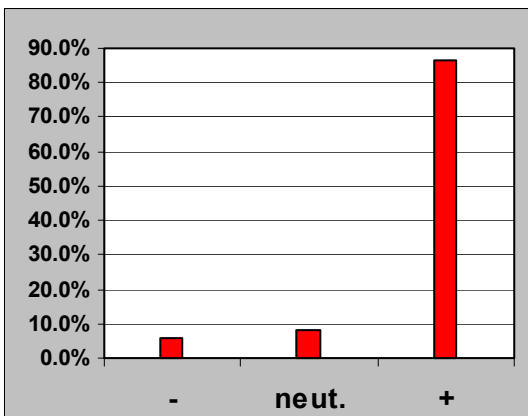
**Table 3.15: Mesa County cable channel 12 programs watched most often:**

Q7	Frequency	Valid Percent
Supertime Solutions	18	17.0%
Inside Mesa County	36	34.0%
Family Life	19	17.9%
Other	33	31.1%
Total Valid	106	100.0%
(Don't watch cable channel 12)	57	
(Don't Know/No Opinion )	15	
Not Asked	226	
Total	404	

**Table 3.16: Mesa County employees are courteous and helpful.**

Q8A	Frequency	Valid Percent
Strongly Agree	33	9.3%
Agree	275	77.2%
Neither Agree nor Disagree	28	7.9%
Disagree	11	3.1%
Strongly Disagree	9	2.5%
Total Valid	356	100.0%
(Don't Know/No Opinion)	47	
(No Response)	1	
Total	404	

**Figure 3.16: Mesa County employees are courteous and helpful.**



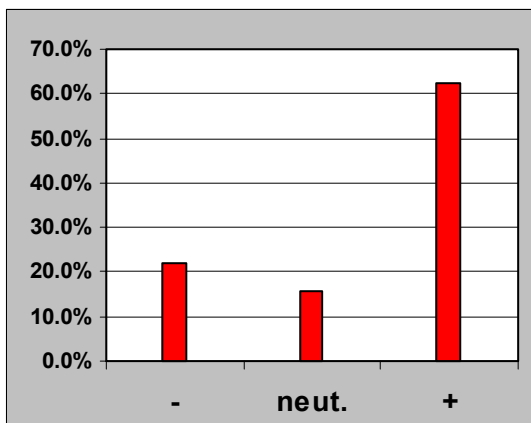
A large majority (86.5%) of respondents indicated that Mesa County employees are courteous and helpful. Very few (7.9%) respondents were neutral on this issue, and fewer still (5.6%) felt dissatisfied with County employee performance.



**Table 3.17: Services provided by the County are completed quickly and efficiently.**

Q8B	Frequency	Valid Percent
Strongly Agree	18	5.2%
Agree	196	57.1%
Neither Agree nor Disagree	54	15.7%
Disagree	53	15.5%
Strongly Disagree	22	6.4%
Total Valid	343	100.0%
(Don't Know/No Opinion)	61	
Total	404	

**Figure 3.17: Services provided by the County are completed quickly and efficiently.**

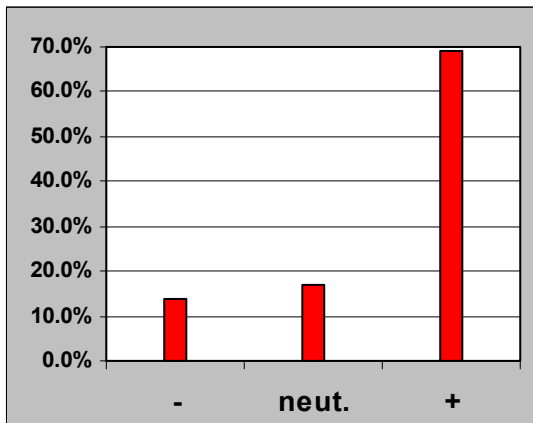


On the issue of Mesa County completing services in a quick and efficient manner, a majority (62.3%) of respondents indicated strong agreement or agreement. Slightly more (21.9%) respondents were dissatisfied than neutral (15.7%) with County performance on this issue.

**Table 3.18: Mesa County employees respond quickly to questions and concerns.**

Q8C	Frequency	Valid Percent
Strongly Agree	33	10.2%
Agree	190	59.0%
Neither Agree nor Disagree	55	17.1%
Disagree	31	9.6%
Strongly Disagree	13	4.0%
Total Valid	322	100.0%
(Don't Know/No Opinion)	80	
(No Response)	2	
Total	404	

**Figure 3.18: Mesa County employees respond quickly to questions and concerns.**

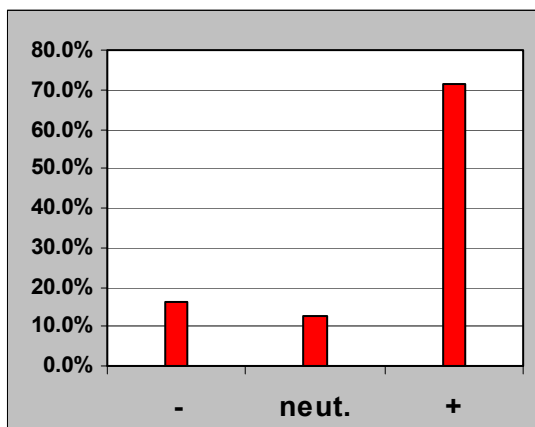


A majority (69.2%) of survey respondents felt that Mesa County employees were quick to respond to questions and concerns, while 17.1% were neutral, and 13.6% felt dissatisfied with County employee performance on this issue.

**Table 3.19: Mesa County employees seem well informed and skilled in their service areas.**

Q8D	Frequency	Valid Percent
Strongly Agree	34	10.1%
Agree	206	61.1%
Neither Agree nor Disagree	43	12.8%
Disagree	45	13.4%
Strongly Disagree	9	2.7%
Total Valid	337	100.0%
(Don't Know/No Opinion)	67	
Total	404	

**Figure 3.19: Mesa County employees seem well informed and skilled in their service areas.**

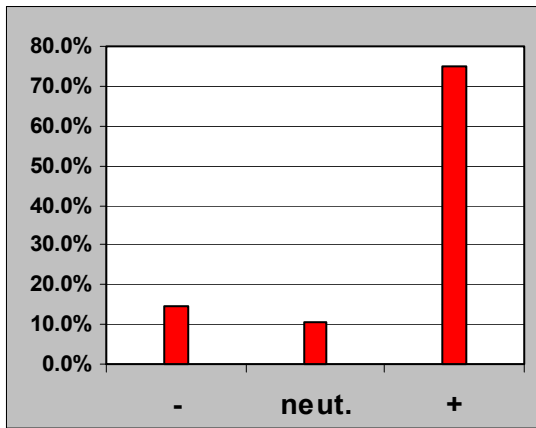


A large majority (71.2%) of respondents agreed that Mesa County employees are informed and skillful in their particular service areas, while 12.8% were neutral on this topic. 16.1% stated that they disagreed or strongly disagreed with this statement.

**Table 3.20: Mesa County services are easy to locate.**

Q8E	Frequency	Valid Percent
Strongly Agree	45	12.0%
Agree	236	62.8%
Neither Agree nor Disagree	40	10.6%
Disagree	52	13.8%
Strongly Disagree	3	.8%
Total Valid	376	100.0%
(Don't Know/No Opinion)	28	
Total	404	

**Table 3.20: Mesa County services are easy to locate.**

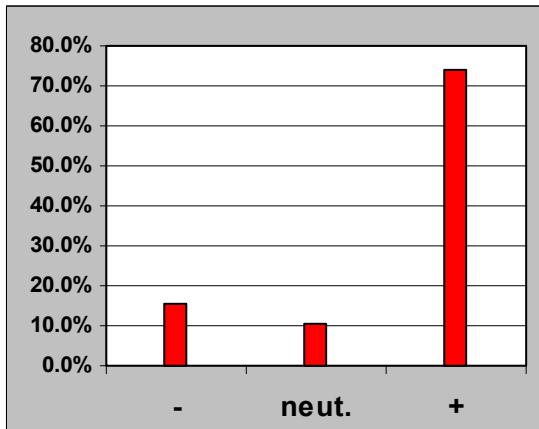


A large majority (74.8%) of survey respondents agreed or strongly agreed that services offered by Mesa County are easy to locate. Slightly more disagreed (14.6%) than were neutral (10.6%) with this statement.

**Table 3.21: Mesa County services are convenient to use.**

Q8F	Frequency	Valid Percent
Strongly Agree	32	8.9%
Agree	235	65.3%
Neither Agree nor Disagree	37	10.3%
Disagree	48	13.3%
Strongly Disagree	8	2.2%
Total Valid	360	100.0%
(Don't Know/No Opinion)	44	
Total	404	

**Figure 3.21: Mesa County services are convenient to use.**

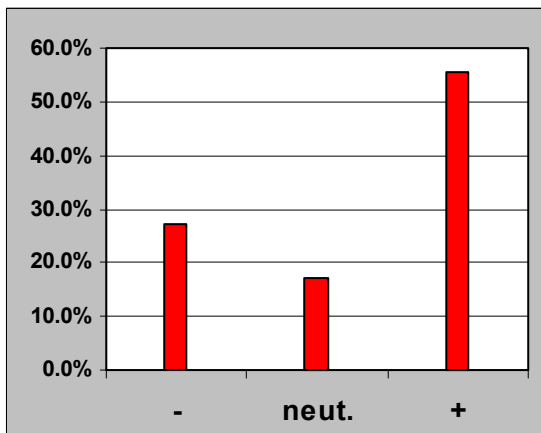


A large majority (74.2%) of respondents strongly agreed or agreed that services offered by Mesa County are convenient to use. Slightly more (15.5%) respondents were not satisfied with service convenience than were respondents who were neutral (10.3%).

**Table 3.22: Mesa County government and the other governments in the county do a good job of working together to get things done.**

Q8G	Frequency	Valid Percent
Strongly Agree	15	4.5%
Agree	169	51.2%
Neither Agree nor Disagree	56	17.0%
Disagree	66	20.0%
Strongly Disagree	24	7.3%
Total Valid	330	100.0%
(Don't Know/No Opinion)	73	
(No Response)	1	
Total	404	

**Figure 3.22: Mesa County government and the other governments in the county do a good job of working together to get things done.**



When asked if Mesa County government does a good job of working cooperatively with other governments, a majority (65.7%) of respondents strongly agreed or agreed. 17.0% indicated that they neither agreed nor disagreed, while 27.3% of survey respondents gave an unfavorable rating on this issue.

### Section 4: Conditions within Mesa County

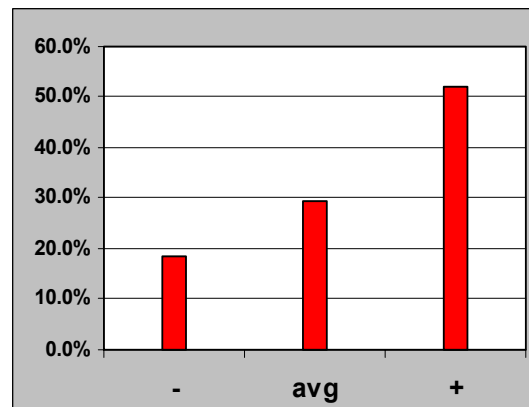
Survey respondents were asked their opinions on specific conditions within Mesa County. Several of these opinions are based on the following scale: *Very Good, Good, Average, Poor* or *Very Poor*. Three questions regarding safety, crime and confidence in Sheriff's Department effectiveness are treated individually in Section 4a, since they follow different formats.

Results for questions about conditions within Mesa County are presented in the following tables along with graphs indicating general respondent attitudes. Survey question numbers appear in the upper left of the tables. Graphs for this section (survey questions 9A through 9H) follow the following format: "-" is for answers Very Poor and Poor; "avg" for Average; and "+" for Very Good and Good.

**Table 4.1: Ease of travel as a motorist is...**

Q6A	Frequency	Valid Percent
Very Good	30	7.6%
Good	176	44.4%
Average	117	29.5%
Poor	61	15.4%
Very Poor	12	3.0%
Total Valid	396	100.0%
(Don't Know/ No Opinion)	8	
Total	404	

**Figure 4.1: Ease of travel as a motorist is...**

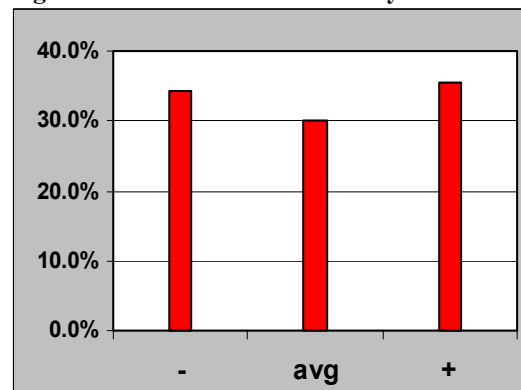


Ease of motor travel received a slight majority (52.0%) of positive ratings from survey respondents; 29.5% rated ease of motor travel as average. 18.4% believe motor travel in Mesa County to be very poor or poor.

**Table 4.2: Ease of travel as a bicyclist is...**

Q9B	Frequency	Valid Percent
Very Good	16	6.3%
Good	75	29.3%
Average	77	30.1%
Poor	72	28.1%
Very Poor	16	6.3%
Total Valid	256	100.0%
(Don't Know/ No Opinion)	148	
Total	404	

**Figure 4.2: Ease of travel as a bicyclist is...**

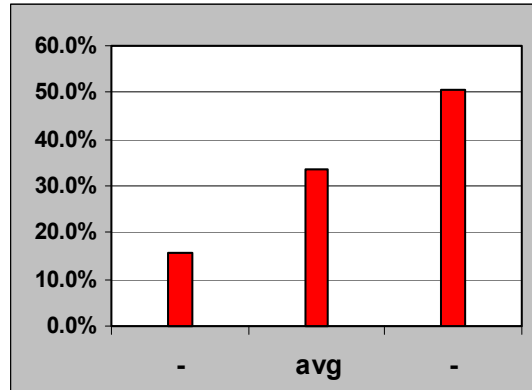


Ratings for ease of travel as a bicyclist were rather evenly spread over positive (35.6%), neutral (30.1%) and negative (34.4%) responses.

**Table 4.3: Ease of travel as a pedestrian is...**

Q9C	Frequency	Valid Percent
Very Good	22	6.3%
Good	155	44.4%
Average	118	33.8%
Poor	40	11.5%
Very Poor	14	4.0%
Total Valid	349	100.0%
(Don't Know/ No Opinion)	55	
Total	404	

**Figure 4.3: Ease of travel as a pedestrian is...**

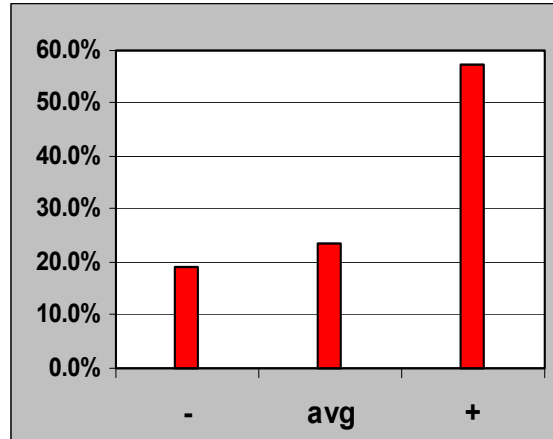


Ease of pedestrian travel received a slight majority (50.7%) of positive ratings, while 33.8% of respondents rated this as average. 15.5% believe ease of pedestrian rate very poorly or poorly.

**Table 4.4: Conservation of open space is...**

Q9D	Frequency	Valid Percent
Very Good	44	12.0%
Good	167	45.5%
Average	86	23.4%
Poor	52	14.2%
Very Poor	18	4.9%
Total Valid	367	100.0%
(Don't Know/ No Opinion)	36	
(No Response)	1	
Total	404	

**Figure 4.4: Conservation of open space is...**



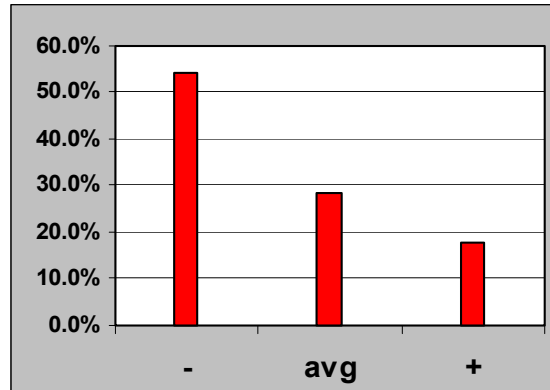
The issue of Mesa County's conservation of open received favorable ratings among a majority (57.5%) of survey respondents, with 80.9% rating this issue as average or above.



**Table 4.5: Job opportunities are...**

Q9E	Frequency	Valid Percent
Very Good	12	3.6%
Good	47	14.0%
Average	95	28.4%
Poor	127	37.9%
Very Poor	54	16.1%
Total Valid	335	100.0%
(Don't Know/ No Opinion)	69	
Total	404	

**Figure 4.5: Job opportunities are...**

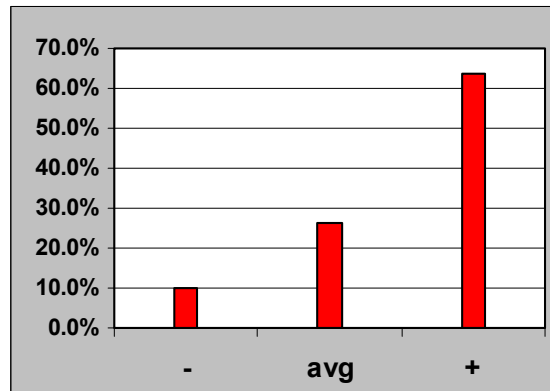


Job opportunities in Mesa County were rated negatively by a majority (54.0%) of survey respondents, who felt such opportunities rated very poor or poor. 28.4% felt that job opportunities are average, while only 17.6% of respondents feel that they are very good or good.

**Table 4.6: Mesa County air quality is...**

Q9F	Frequency	Valid Percent
Very Good	58	14.4%
Good	198	49.3%
Average	106	26.4%
Poor	34	8.5%
Very Poor	6	1.5%
Total Valid	402	100.0%
(Don't Know/ No Opinion)	2	
Total	404	

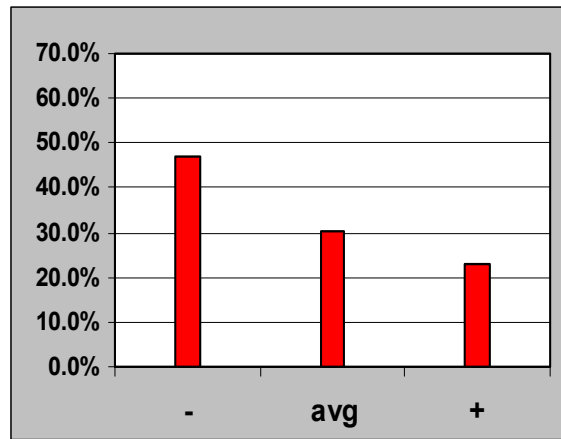
**Figure 4.6: Mesa County air quality is...**



Mesa County air quality was rated positively by a majority (63.7%) of respondents, while a great majority (90.1%) stated that air quality is average or above.

**Table 4.7 / Figure 4.7: Availability of affordable housing in Mesa County is....**

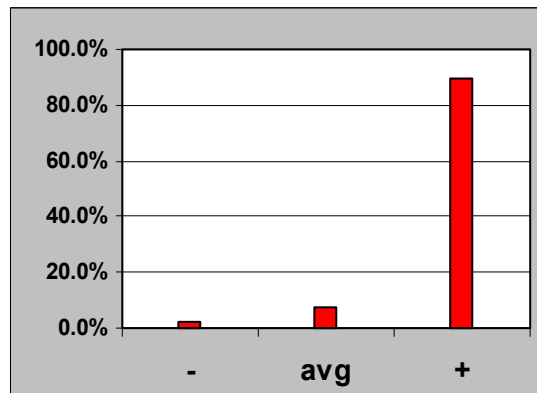
Q9G	Frequency	Valid Percent
Very Good	15	4.3%
Good	65	18.5%
Average	106	30.2%
Poor	112	31.9%
Very Poor	53	15.1%
Total Valid	351	100.0%
(Don't Know/No Opinion)	52	
(No Response)	1	
Total	404	



Availability of affordable housing was rated negatively by 47.0% of survey respondents, while only 22.8% stated that this issue rates as very good or good. Nearly a third of respondents (30.2%) rate availability of affordable housing in Mesa County as average.

**Table 4.8 / Figure 4.8: Opportunities for outdoor recreation are...**

Q9H	Frequency	Valid Percent
Very Good	211	53.1%
Good	146	36.8%
Average	31	7.8%
Poor	7	1.8%
Very Poor	2	.5%
Total Valid	397	100.0%
(Don't Know/No Opinion)	7	
Total	404	



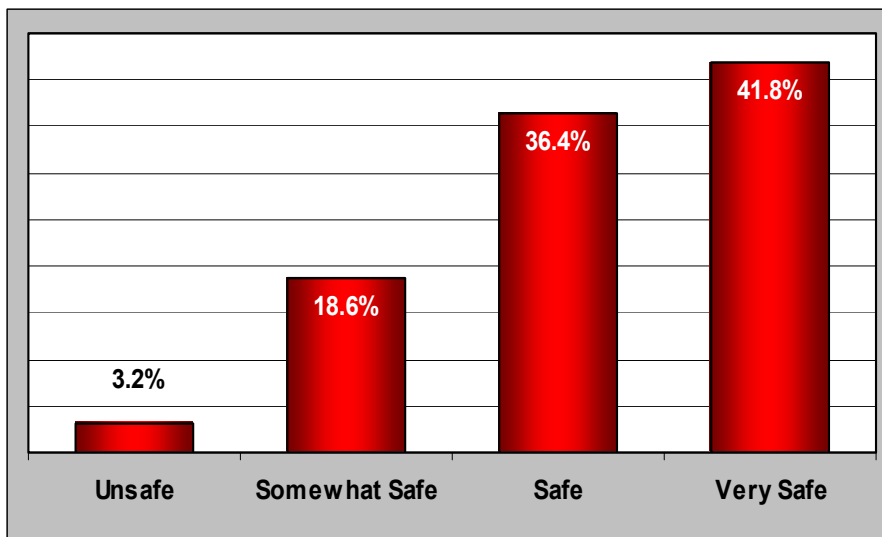
Opportunities for outdoor recreation rated very highly among survey respondents, with a large majority (89.9%) stating that such opportunities are very good or good, and 97.7% rating them as average or above.

## Section 4a: Safety and Crime

**Table 4.9: In their neighborhoods, respondents feel...**

Q10	Frequency	Valid Percent
Very Safe	169	41.8%
Safe	147	36.4%
Somewhat Safe	75	18.6%
Unsafe	13	3.2%
Total Valid	404	100.0%

**Figure 4.9: In their neighborhoods, respondents feel...**

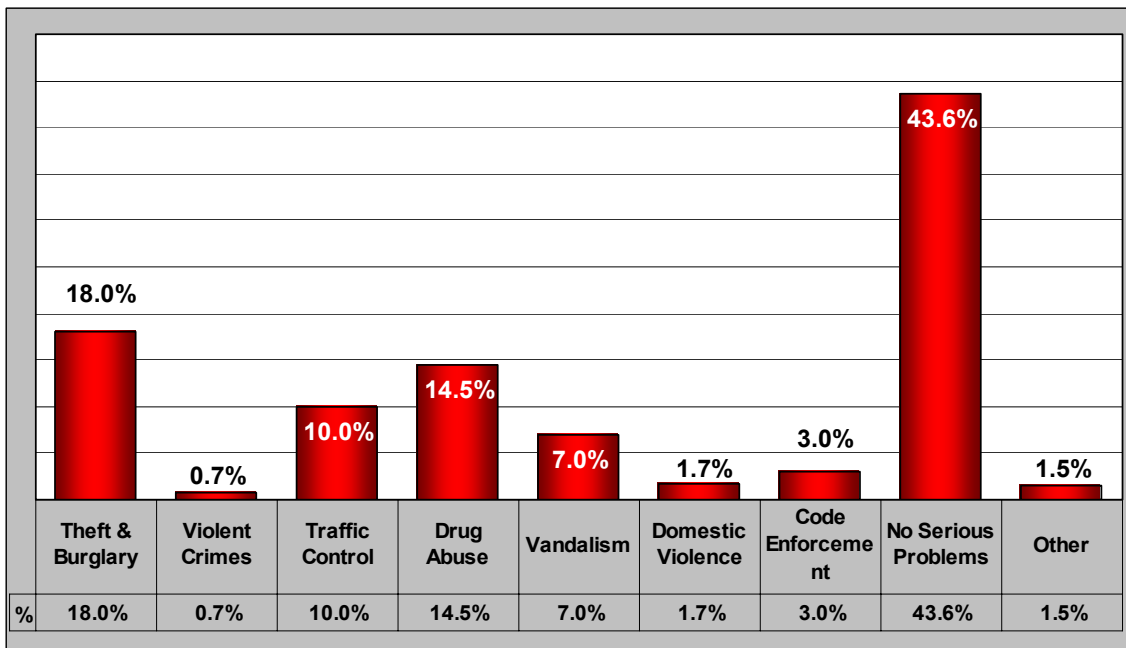


A large majority (78.2%) of respondents stated that they feel very safe or safe in their Mesa County neighborhoods. Very few (3.2%) respondents reported feeling unsafe, while 18.6% indicated they feel somewhat safe.

**Table 4.10: Most serious crime problem in respondent's neighborhood is...**

Q11	Frequency	Valid Percent
Theft and burglary	72	18.0%
Violent crimes	3	.7%
Traffic control	40	10.0%
Drug abuse	58	14.5%
Vandalism	28	7.0%
Domestic violence	7	1.7%
Code enforcement	12	3.0%
No serious crime problems in my neighborhood.	175	43.6%
Other	6	1.5%
Total Valid	401	100.0%
(Don't Know/No Opinion)	3	
Total	404	

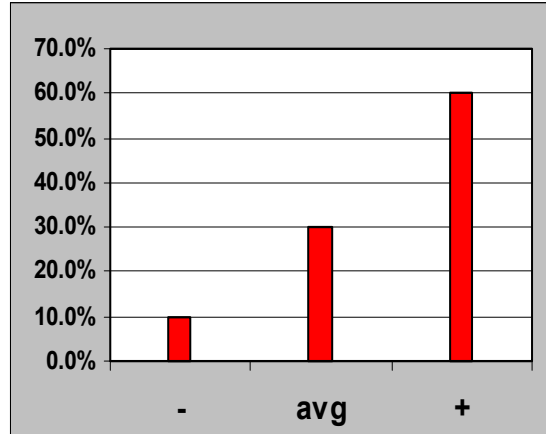
**Figure 4.10: Most serious crime problem in respondent's neighborhood is...**



When asked what they perceive to be the most serious crime problem in their neighborhood, 43.6% of respondents stated that there are no serious neighborhood crime problems. Of the neighborhood crime problems named as most serious by more than 10% of respondents, theft or burglary was named by 18%, and drug abuse by 14.5%. Traffic control was named by 10% of survey respondents, while all other crime categories were named by fewer than 10% of respondents.

**Table 4.11 / Figure 4.11: Level of confidence in the Sheriff's Department to provide effective emergency assistance is...**

Q12	Frequency	Valid Percent
Very High	91	23.3%
High	144	36.8%
Neither High nor Low	118	30.2%
Low	25	6.4%
Very Low	13	3.3%
Total Valid	391	100.0%
(Don't Know/ No Opinion)	12	
(No Response)	1	
Total	404	



A majority of 60.1% of survey respondents have a very high or high level of confidence in the ability of the Sheriff's Department to provide effective emergency assistance, with a large majority (90.3%) having a confidence level of average or above.

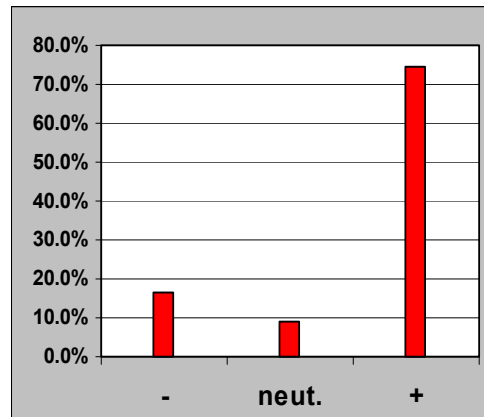
### Section 5: Mesa County Policy Issues and Policy Directions

Survey respondents were asked their opinions on specific policy issues and policy directions important to Mesa County. Results for policy questions are presented in the following tables along with graphs indicating general respondent attitudes. Survey question numbers appear in the upper left of the tables.

Graphs for these questions follow the following format: "-" is for answers Disagree and Strongly Disagree; "neut." for Neither Agree nor Disagree; and "+" for Agree and Strongly Agree. Items are treated individually where the rating scale varies from the above.

**Table 5.1 / Figure 5.1: The County should purchase land and maintain it as open space.**

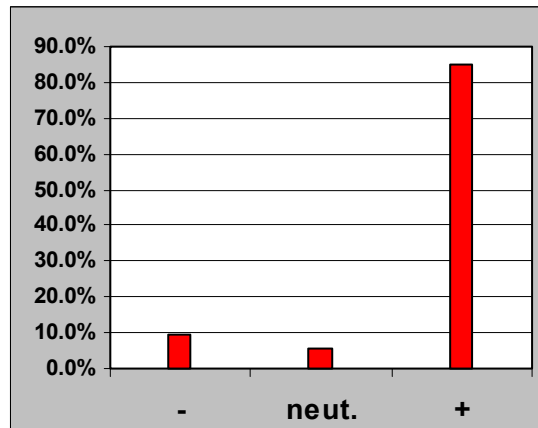
Q13A	Frequency	Valid Percent
Strongly Agree	80	21.6%
Agree	196	52.8%
Neither Agree nor Disagree	33	8.9%
Disagree	52	14.0%
Strongly Disagree	10	2.7%
Total Valid	371	100.0%
(Don't Know/No Opinion)	33	
Total	404	



On the issue of whether Mesa County should maintain open space through the purchase of land, 74.4% of respondents strongly agreed or agreed that it should. 16.7% strongly disagreed or disagreed, while 8.9% of respondents were neutral on this issue.

**Table 5.2 / Figure 5.2: The County should require that any development in Mesa County strictly adheres to land use plans.**

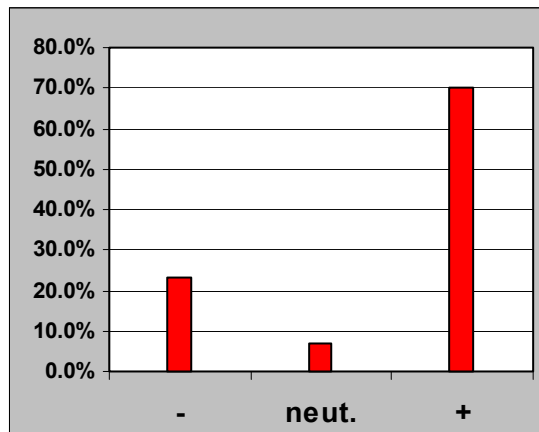
Q13B	Frequency	Valid Percent
Strongly Agree	100	27.2%
Agree	212	57.6%
Neither Agree nor Disagree	21	5.7%
Disagree	31	8.4%
Strongly Disagree	4	1.1%
Total Valid	368	100.0%
(Don't Know/No Opinion)	36	
Total	404	



A large majority (84.8%) of respondents either strongly agreed or agreed that Mesa County should require strict adherence to land use plans for any development.

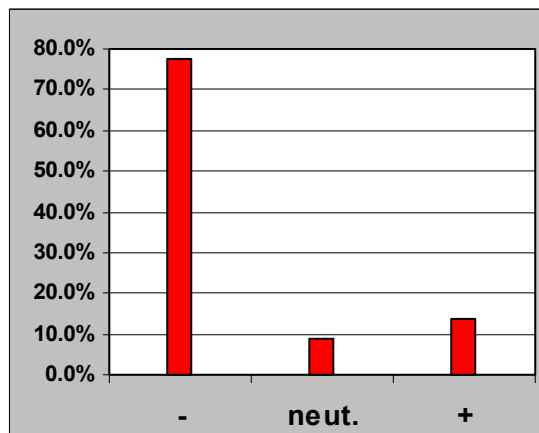
**Table 5.3 / Figure 5.3: The County should DECREASE the number of houses that can be built per acre in rural unincorporated areas of Mesa County.**

Q13C	Frequency	Valid Percent
Strongly Agree	95	25.5%
Agree	166	44.5%
Neither Agree nor Disagree	26	7.0%
Disagree	72	19.3%
Strongly Disagree	14	3.8%
Total Valid	373	100.0%
(Don't Know/No Opinion)	31	
Total	404	



**Table 5.4 / Figure 5.4: Mesa County should INCREASE the number of houses that can be built per acre in rural unincorporated Mesa County.**

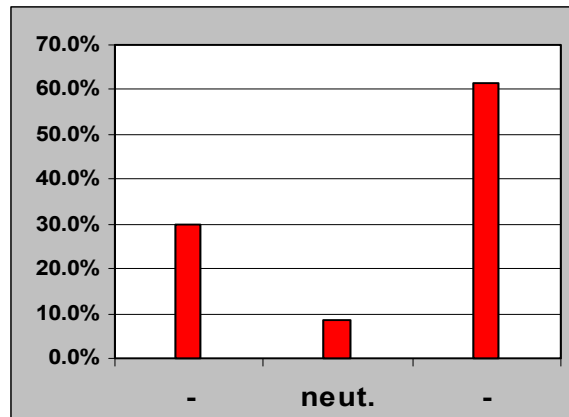
Q13D	Frequency	Valid Percent
Strongly Agree	12	3.3%
Agree	38	10.4%
Neither Agree nor Disagree	32	8.7%
Disagree	194	52.9%
Strongly Disagree	91	24.8%
Total Valid	367	100.0%
(Don't Know/No Opinion)	37	
Total	404	



Survey items 13C and 13D refer to the same issue: the number of houses that can be built per acre in rural, unincorporated Mesa County. In the first item (13C), respondents were asked their level of agreement with an increase in the number of houses allowed; in the second item (13D), they were asked their level of agreement with a decrease in the number of houses allowed. As one would expect, there is an inverse relationship to responses for these two items. 70.0% of respondents strongly agreed or agreed that Mesa County should decrease the number of houses allowed. Correspondingly, 77.7% strongly disagreed or disagreed that the number of houses allowed should increase. 23.1% of respondents strongly disagreed or disagreed that the number of houses allowed should decrease, while 13.7% strongly agreed or agreed that this number should increase.

**Table 5.5 / Figure 5.5: Mesa County should set specific architectural or building standards on the appearance of COMMERCIAL buildings in Mesa County.**

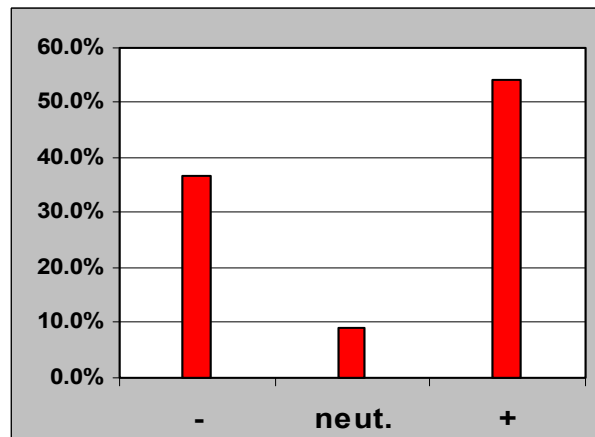
Q13E	Frequency	Valid Percent
Strongly Agree	43	11.6%
Agree	184	49.7%
Neither Agree nor Disagree	32	8.6%
Disagree	93	25.1%
Strongly Disagree	18	4.9%
Total Valid	370	100.0%
(Don't Know/No Opinion)	34	
Total	404	



On the issue of whether or not Mesa County should set specific architectural or building standards on the appearance of commercial buildings, a majority (61.3%) either strongly agreed or agreed. Many respondents (30.0%) either strongly disagreed or disagreed that the County should set such standards.

**Table 5.6 / Figure 5.6: Mesa County should use tax dollars to fund a purchase of development rights program to conserve open space.**

Q14A	Frequency	Valid Percent
Strongly Agree	36	9.8%
Agree	163	44.4%
Neither Agree nor Disagree	33	9.0%
Disagree	110	30.0%
Strongly Disagree	25	6.8%
Total Valid	367	100.0%
(Don't Know/No Opinion)	37	
Total	404	

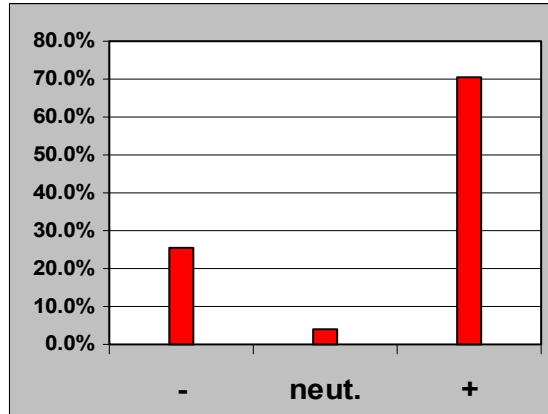


While a small majority (54.2%) of respondents agreed that Mesa County should use tax dollars to fund a purchase of development rights program to conserve open space, 36.8% of them strongly disagreed or disagreed. Only 9.0% of survey respondents were neutral on this issue.



**Table 5.7 / Figure 5.7: Mesa County should use lottery dollars to fund a purchase of development rights program to conserve open space.**

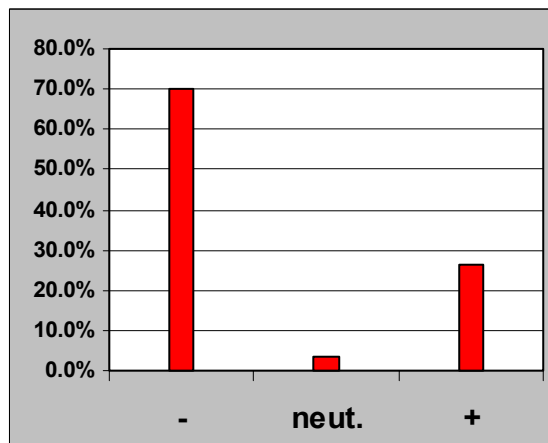
Q14B	Frequency	Valid Percent
Strongly Agree	61	16.2%
Agree	204	54.1%
Neither Agree nor Disagree	16	4.2%
Disagree	70	18.6%
Strongly Disagree	26	6.9%
Total Valid	377	100.0%
(Don't Know/No Opinion)	27	
Total	404	



A majority (70.3%) of survey respondents stated that lottery dollars should be used to fund purchase of development rights. Very few (4.2%) respondents were neutral on this issue, and 25.5% either strongly disagreed or disagreed that lottery dollars should fund this program.

**Table 5.8 / Figure 5.8: I would support a new tax specifically for growth management and purchase of development rights.**

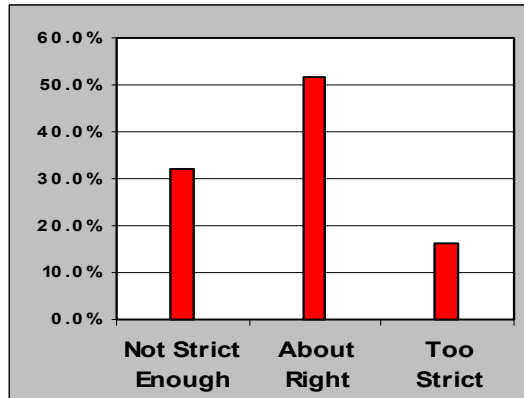
Q14C	Frequency	Valid Percent
Strongly Agree	16	4.2%
Agree	83	22.0%
Neither Agree nor Disagree	14	3.7%
Disagree	191	50.7%
Strongly Disagree	73	19.4%
Total Valid	377	100.0%
(Don't Know/No Opinion)	27	
Total	404	



A large majority (70.1%) of survey respondents strongly disagreed or disagreed that they would support a new tax for a purchase of development rights program. Again, there was very little neutrality on this issue (3.7%), and 26.2% either strongly agreed or agreed that they would support a new tax for this program.

**Table 5.9 / Figure 5.9: Do you believe that Mesa County regulations on new development are...**

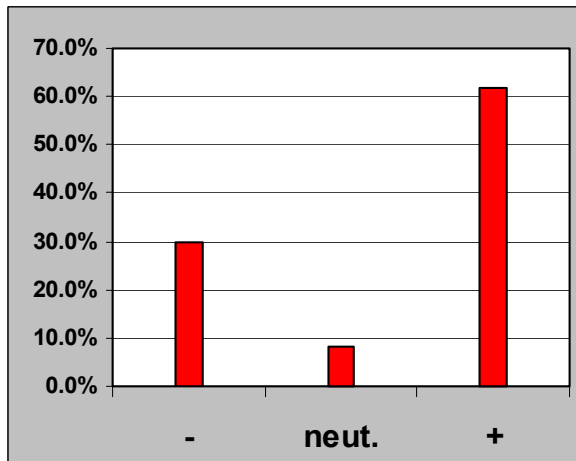
Q15	Frequency	Valid Percent
Too strict	50	16.1%
About right	161	51.8%
Not strict enough	100	32.2%
Total Valid	311	100.0%
(No opinion)	91	
(No response)	2	
Total	404	



A small majority (51.8%) of respondents stated that County regulations on new development are 'about right', and neither too strict nor not strict enough. More respondents (32.2%) believe that regulations are not strict enough than believe the regulations to be too strict (16.1%).

**Table 5.10 / Figure 5.10: Mesa County should use county funds to encourage new companies to locate here.**

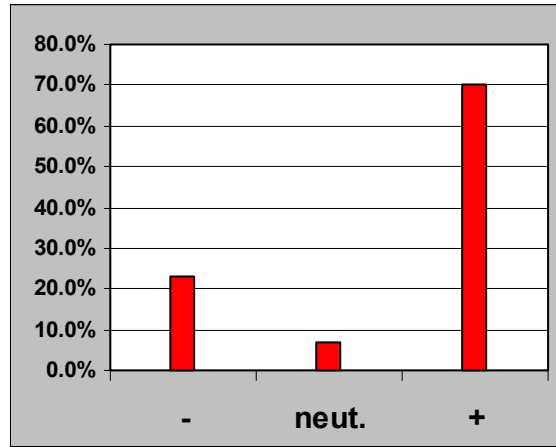
Q16A	Frequency	Valid Percent
Strongly Agree	60	15.3%
Agree	182	46.5%
Neither Agree nor Disagree	33	8.4%
Disagree	93	23.8%
Strongly Disagree	23	5.9%
Total Valid	391	100.0%
(Don't Know/No Opinion)	13	
Total	404	



A majority (61.8%) of respondents either strongly agreed or agreed that County funds should be used to encourage new companies to locate within Mesa County. While few (8.4%) were neutral on this issue, 29.7% either strongly disagreed or disagreed that County funds should be used for this purpose.

**Table 5.11 / Figure 5.11: Mesa County should use county funds to help businesses already located in Mesa County to expand.**

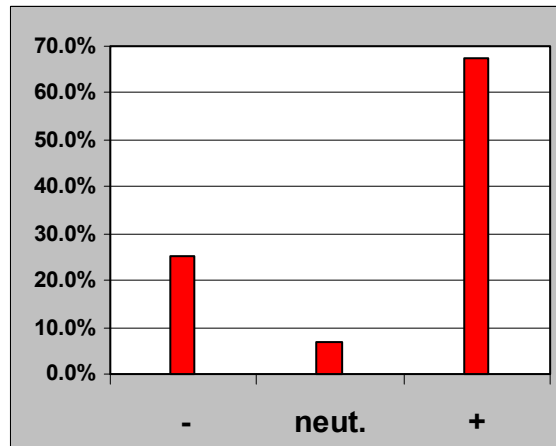
Q 16B	Frequency	Valid Percent
Strongly Agree	60	15.5%
Agree	211	54.5%
Neither Agree nor Disagree	27	7.0%
Disagree	80	20.7%
Strongly Disagree	9	2.3%
Total Valid	387	100.0%
(Don't Know/No Opinion)	17	
Total	404	



70.0% of survey respondents strongly agreed or agreed that Mesa County funds should be used to assist current County businesses to expand. Few (7.0%) were neutral on this issue, while 23.0% stated that they either strongly disagreed or disagreed that County funds should be used for this purpose.

**Table 5.12 / Figure 5.12: Mesa County should use county funds to subsidize the building of low and moderate income housing.**

Q16C	Frequency	Valid Percent
Strongly Agree	52	13.6%
Agree	207	54.0%
Neither Agree nor Disagree	27	7.0%
Disagree	82	21.4%
Strongly Disagree	15	3.9%
Total Valid	383	100.0%
(Don't Know/No Opinion)	21	
Total	404	



A majority (67.6%) of survey respondents either strongly agree or agree that County funds should be used to subsidize the building of low and moderate income housing. 25.3% of survey respondents either strongly disagreed or disagreed that County funds should be used for this purpose, while only 7.0% of respondents were neutral on this issue.

## Section 6: Comparison of 2005 Survey Results with the 2003 Survey

The 2005 survey instrument was based closely on that used in 2003, making direct comparisons possible for most items. Although tests of statistical significance were not performed, the sample sizes of around 400 respondents for each survey mean that differences of 7 percentage points or more generally would be expected to test as statistically significant, with 95% confidence.

All ten items showing at least this much change are presented in this section, arranged in two tables. In each table, positive responses are combined for each question to yield a generally positive figure for comparison; presence or absence of improvement is noted; and the percentage point change from 2003 to 2005 is given in the final column.

**Table 6.1**

<b>Service or County Issue</b>	<i>Very Good or Good</i> <b>2003</b>	<i>Very Good or Good</i> <b>2005</b>	<b>Improvement</b>	<b>Percentage Point Difference</b>
Conservation of open space.	<b>45.0%</b>	<b>57.5%</b>	<b>YES</b>	<b>+12.5</b>
Protective services for children and adults.	<b>48.9%</b>	<b>59.7%</b>	<b>YES</b>	<b>+10.8</b>
Land use planning.	<b>28.0%</b>	<b>35.9%</b>	<b>YES</b>	<b>+7.9</b>
Economic assistance programs for children and adults.	<b>50.0%</b>	<b>57.6%</b>	<b>YES</b>	<b>+7.6</b>
Employment services or assistance through the workforce center.	<b>46.5%</b>	<b>53.9%</b>	<b>YES</b>	<b>+7.4</b>
Public transportation.	<b>72.4%</b>	<b>64.6%</b>	<b>NO</b>	<b>-7.8</b>
Availability of affordable housing.	<b>33.4%</b>	<b>22.8%</b>	<b>NO</b>	<b>-10.6</b>

Table 6.1 includes seven items for which the two positive responses being combined are “good” and “very good.” Five of these seven items regarding Mesa County services or conditions showed substantial improvement from 2003 to 2005, with the responses on ‘conservation of open space’ and ‘protective services for children and adults’ each improving by more than 10 percentage-points. Two items, ‘public transportation’ and ‘availability of affordable housing’ received substantially lower ratings in 2005 than they did in 2003.

**Table 6.2**

<b>Service Delivery</b>	<i>Strongly Agree or Agree</i>	<i>Strongly Agree or Agree</i>	Improvement	Percentage Point Difference
	<b>2003</b>	<b>2005</b>		
Mesa County employees respond quickly to questions and concerns.	<b>54.1%</b>	<b>69.2%</b>	<b>YES</b>	<b>+15.1</b>
Services provided by the County are completed quickly and efficiently.	<b>48.0%</b>	<b>62.3%</b>	<b>YES</b>	<b>+14.3</b>
Mesa County employees seem well informed and skilled in their service areas.	<b>62.2%</b>	<b>71.2%</b>	<b>YES</b>	<b>+9.0</b>

Table 6.2 presents the remaining three items showing change of at least 7 percentage points; for these, the positive responses are “agree” and “strongly agree.” All three of these items relating to service delivery showed improvement from 2003 to 2005. There are much higher levels of satisfaction among survey respondents with the speed and efficiency of services, and with two items regarding County employees: how quickly employees respond to questions and concerns, and how well informed and skilled employees are in their service areas.

## Section 7: Cross-tabulations

Analyses were conducted to look for relationships between various background characteristics of the respondents (sex, age, length of residence in Mesa County, whether respondents reside within or outside of town or city limits, specific area or residence) and other items in the survey. This section presents the results of all cross-tabulations for which the applicable test of statistical significance gives at least 95% confidence that the findings from the 2005 sample can be generalized to the population of Mesa County households. In addition, in Appendix 5, some non-significant cross-tabulations are also presented, and noted as such. These results are provided at the specific request of Mesa County officials.

As in the preceding section, results in this section have been simplified by combining positive responses to form a dichotomy (generally positive responses versus all other valid responses). Where both variables in a cross-tabulation are rank-ordered or dichotomous, the chi-square test for linear trend was performed; otherwise, the overall Pearson chi-square test was used. Unless indicated to the contrary in the tables below, the results are statistically significant ( $p < .05$ ) based on the trend test.

**Table 7.1: Significant differences observed by Sex.**

	Sex	
	Male	Female
Q6G. Protective services for children and adults are very good or good.	68.6%	54.1%
Q8A. Strongly agree or agree that Mesa County employees are courteous and helpful.	91.9%	82.6%
Q8C. Strongly agree or agree that Mesa County employees respond quickly to questions, concerns.	75.4%	65.2%
Q8D. Strongly agree or agree that Mesa County employees seem well informed and skilled in their areas.	78.2%	65.7%
Q8G. Strongly agree or agree that Mesa County government and other governments work well together.	64.0%	50.0%
Q9E. Job opportunities are very good or good.	18.0%	17.5%
Q9G. Availability of affordable housing is very good or good.	29.9%	17.8%
Q9H. Opportunities for outdoor recreation are very good or good.	94.1%	87.1%
Q10. Feel very safe or safe in neighborhood.	84.8%	73.6%
Q13C. Strongly agree or agree that the County should decrease the number of houses allowed per acre in unincorporated Mesa County.	60.6%	76.8%
Q16A. Strongly agree or agree that Mesa County should use county funds to encourage new companies to locate here.	68.1%	57.4%
Q16C. Strongly agree or agree that Mesa County should use county funds to subsidize the building of low and moderate income housing.	58.2%	74.8%

Table 7.1 shows the 12 significant relationships involving the respondent's gender. Males gave more positive responses than females on all but two of these 12 variables higher than female respondents. Women were more inclined than men to decrease the number of houses allowed per acre in unincorporated Mesa County, and to use County funds to subsidize the construction of low and middle income housing

**Table 7.2: Significant differences observed by Age.**

	Age					
	18-24	25-34	35-44	45-54	55-64	65 & up
Q3. Overall quality of life in Mesa County is excellent or good.	45.0%	75.0%	75.4%	73.3%	73.9%	78.4%
Q5. Overall, Mesa County government operates very well or well.	63.2%	59.5%	46.3%	54.4%	53.7%	79.0%
Q6E. Protection of public health is very good or good.	58.8%	65.9%	62.3%	64.4%	70.1%	83.0%
Q6M. Services offered through Tri-River extension programs are very good or good.	72.7%	62.1%	80.0%	72.7%	81.6%	85.5%
Q8A. Strongly agree or agree that Mesa County employees are courteous and helpful.	78.9%	87.8%	85.7%	79.8%	90.2%	91.5%
Q14C. Strongly agree or agree to support a new tax for growth management and purchase of development rights.	36.8%	37.5%	35.2%	27.9%	20.9%	16.5%
Q16A. Strongly agree or agree that County funds should be used to encourage new companies to locate in Mesa County.	68.4%	62.8%	64.9%	69.2%	59.4%	53.6%
Q16B. Strongly agree or agree that Mesa County should use county funds to help businesses already located in Mesa County to expand.	84.2%	81.8%	74.5%	75.0%	66.2%	55.8%

As shown in Table 7.2, three variables show a significant decline in ratings as age increases. Support for a new tax for growth management and purchase of development rights declines rather steadily as age increases, as does agreement with County funds being used to encourage new companies to locate in Mesa County. The greatest decline as age increases is a nearly 30 percentage-point drop from the youngest to oldest age categories on the issue of whether County funds should be used to help existing businesses expand. For five variables, ratings generally rise as age increases: overall quality of life; County government operates very well or well; protection of public health; services through Tri-River extension programs; and whether County employees are helpful and courteous.

**Table 7.3: Significant differences observed by length of residence in Mesa County.**

	Length of County Residence, in years				
	1-5	6-10	11-15	16-20	21 & up
Q1. Lives within limits of a city or town.	81.3%	64.8%	62.2%	60.0%	53.4%
Q4. Over the past 3 years, quality of life in Mesa County has improved.	33.8%	28.6%	31.8%	17.6%	18.8%
Q6B. Traffic Control is very good or good.	57.8%	46.5%	33.3%	33.3%	39.9%
Q6K. Land use planning is very good or good.	47.3%	38.3%	26.8%	20.6%	35.0%
Q8F. Strongly agree or agree that Mesa County services are convenient to use.	79.2%	75.0%	76.7%	86.7%	68.2%
Q8G. Strongly agree or agree that Mesa County government and other governments work well together.	59.7%	65.0%	46.4%	50.0%	54.3%
Q9A. Ease of travel as a motorist is very good or good.	60.2%	60.9%	47.7%	50.0%	45.0%
Q9D. Conservation of open space is very good or good.	70.9%	69.7%	35.9%	54.3%	51.7%
Q9F. Air quality is very good or good.	75.8%	68.6%	55.6%	60.0%	57.5%
Q9G. Availability of affordable housing is very good or good.	32.5%	24.6%	28.6%	10.3%	17.7%
Q13D. Strongly agree or agree that Mesa County should increase the number of houses allowed per rural acre in unincorporated Mesa County.	18.8%	13.2%	9.5%	25.0%	9.6%
Q14C. Strongly agree or agree to support a new tax for growth management and purchase of development rights.	32.5%	26.1%	31.7%	25.0%	21.7%
Q16A. Strongly agree or agree that the County should use county funds to help businesses already located in Mesa County to expand.	69.3%	64.3%	70.5%	63.6%	53.8%

All 13 variables differing significantly by length of residence in Mesa County (Table 7.3) show a general decline in ratings as length of residence increases. The declines are not always perfectly consistent, sometimes showing a marked dip among the 11 to 15 year residents, and/or an upturn among the most long-term residents. (The upturn may reflect age differences, since as shown in the preceding table, older respondents are more positive on several items.) Overall, though, it is fair to say that longer-term residents tend to be less positive about Mesa County than their short-term neighbors.



**Table 7.4: Significant differences observed by type of residence (within limits of city or town, or not).**

	Lives within limits of city or town.	
	Yes	No
Q4. Over the past 3 years, quality of life in Mesa County has improved.	28.3%	19.1%
Q6D. Public transportation is very good or good.	69.5%	56.2%
Q6K. Land use planning is very good or good.	39.2%	30.8%
Q8B. Strongly agree or agree that services provided by Mesa County are completed quickly and efficiently.	66.2%	56.1%
Q8C. Strongly agree or agree that Mesa County employees respond quickly to questions and concerns.	72.7%	63.8%
Q8F. Strongly agree or agree that County services are convenient to use.	77.2%	69.5%
Q8G. Strongly agree or agree that Mesa County other governments in the county do a good job of working together to get things done.	69.5%	56.2%
Q13E. Strongly agree or agree that Mesa County should set specific architectural or building standards on the appearance of commercial buildings.	68.7%	49.6%
Q6D. Public Transportation is very good or good.	69.5%	56.2%
Q10. Feel very safe or safe in neighborhood.	74.5%	85.1%

As shown in Table 7.4, ratings were higher for respondents who live within than outside the limits of a city or town for nine out of the ten significant survey items. The one survey item rated higher among those outside of city or town limits was feeling very safe or safe within one's neighborhood.

Table 7.5 provides details on the relationships between city or non-city residence and perceptions of crime severity. (Since the types of crime are not intrinsically rank-ordered, the overall chi-square test was used to establish statistical significance for this table.) Both types of residents chose 'no serious crime problem' more often than any other response. For those who chose a specific crime or crime category as being most serious, 'theft and burglary' was rated highest and 'drug abuse' second-highest for both resident types. 'Traffic control' was rated on a par with 'drug abuse' for those living outside of city or town limits.

**Table 7.5: Significant differences in most serious crime by type of residence.**

Sig. Overall	Lives within limits of city or town			
	Yes		No	
	Count	%	Count	%
Theft and burglary	51	20.2%	21	14.3%
Violent crimes	3	1.2%	0	.0%
Traffic control	25	9.9%	15	10.2%
Drug abuse	42	16.6%	15	10.2%
Vandalism	22	8.7%	6	4.1%
Domestic violence	3	1.2%	4	2.7%
Code enforcement	6	2.4%	6	4.1%
No serious crime problems	100	39.5%	75	51.0%
Other	1	.4%	5	3.4%

Another aspect of place of residence concerns particular named locales. Table 7.6 provides a breakdown of the locales identified in the survey. For statistical purposes, only those areas with a sample size equal to or greater than 30 (Grand Junction, Fruita and Clifton) are considered separately for the tables in this section; all other regions are combined into the category *Other*. Like the types of crime, these areas are not intrinsically rank-ordered, and therefore the overall chi-square test is used to determine significance.

**Table 7.6: Area of residence.**

	Frequency	Valid Percent
Clifton	39	9.7%
Collbran	6	1.2%
DeBeque	4	1.0%
Fruita	33	8.2%
Glade Park	7	1.7%
Grand Junction	214	53.2%
Loma	4	1.0%
Mack	4	1.0%
Mesa	4	1.0%
Molina	2	.5%
Orchard Mesa	14	3.5%
Palisade	19	4.7%
Redlands	23	5.7%
Whitewater	3	.7%
Unincorporated	17	4.2%
Other	9	2.5%
Total Valid	402	100.0%
Don't Know/No Answer	2	
Total	404	

Table 7.7 shows that residents of all areas except Clifton rate ‘theft and burglary’ as the most serious crime problem. Clifton residents rate ‘drug abuse’ as the most serious area problem, with ‘theft and burglary’ second. Clifton residents also stand out in that relatively few (17.9%) report no serious crime problems, compared to well over a third of Grand Junction residents (39.2%), nearly a majority of those in Fruita (48.5%), and approaching two-thirds of those in other areas (60.0%).

**Table 7.7: Significant differences in most serious crime by Area.**

Sig. Overall	Area							
	Grand Junction		Fruita		Clifton		Other	
	Count	%	Count	%	Count	%	Count	%
Theft and burglary	41	19.3%	7	21.2%	8	20.5%	16	13.9%
Violent crimes	3	1.4%	0	.0%	0	.0%	0	.0%
Traffic control	26	12.3%	5	15.2%	3	7.7%	5	4.3%
Drug abuse	34	16.0%	2	6.1%	12	30.8%	10	8.7%
Vandalism	15	7.1%	1	3.0%	5	12.8%	7	6.1%
Domestic violence	4	1.9%	0	.0%	2	5.1%	1	.9%
Code enforcement	6	2.8%	1	3.0%	1	2.6%	3	2.6%
No serious crime problems	83	39.2%	16	48.5%	7	17.9%	69	60.0%
Other	0	.0%	1	3.0%	1	2.6%	4	3.5%

Table 7.8 shows that residents of Grand Junction are the most content with the strictness of regulations on new development. Fruita has the largest percentage (30.8%) of County residents who feel new development regulations are too strict, while Clifton residents are the most likely (41.4%) to rate such regulations as not strict enough.

**Table 7.8: Differences in perceptions of strictness of Mesa County regulations by Area.**

	Area							
	Grand Junction		Fruita		Clifton		Other	
	Count	%	Count	%	Count	%	Count	%
Too strict	20	12.2%	8	30.8%	5	17.2%	17	18.7%
About right	99	60.4%	11	42.3%	12	41.4%	39	42.9%
Not strict enough	45	27.4%	7	26.9%	12	41.4%	35	38.5%

**Table 7.9: Significant differences observed by Area.**

Sig. Overall	Area			
	Grand Junction	Fruita	Clifton	Other
Q5. Overall, Mesa County government operates very well or well.	65.7%	65.7%	56.4%	51.9%
Q9H. Opportunities for outdoor recreation are very good or good.	89.0%	94.0%	86.8%	92.2%
Q10. Feel very safe or safe within one's neighborhood.	78.1%	90.9%	61.5%	80.1%
Q13E. Strongly agree or agree that Mesa County should set specific architectural or building standards on the appearance of commercial buildings.	70.1%	53.1%	54.3%	50.4%

Generally consistent with these results, Table 7.9 shows that the area with the highest percentage of those who feel very safe or safe within their neighborhoods is Fruita, while the lowest rating for this item is from Clifton. All areas rate opportunities for outdoor recreation highly, with the highest rating coming from Fruita. More respondents from Grand Junction agree that Mesa County should set specific architectural or building standards on the appearance of commercial buildings than respondents from other areas. Grand Junction and Fruita residents rate Mesa County government operation higher than those in other areas.

This concludes discussion of the statistically significant relationships found in the cross-tabulations. In addition, at the request of Mesa County officials, several other cross-tabulations are presented in Appendix 5. For these cross-tabulations, SPSS output tables are used and no comment is provided. Additionally, area frequencies are displayed with all original named locales.

## APPENDIX 1

# Mesa County 2005 Citizen Attitude Survey

**Respondents = 404**

**Hello, my name is [First Name]. I'm calling on behalf of Mesa County Administration and I'm NOT soliciting anything. Your phone number was randomly drawn for an opinion poll about quality of life in Mesa County. The survey only takes about 10 minutes. WOULD YOU BE ABLE TO PARTICIPATE?**

Only if asked: The survey is sponsored by the Mesa County Administration. The information collected will help them plan for the future.

**First I need to confirm. Is this a private residence in Mesa County, Colorado?**

If needed: Private household means a residence where one or more individuals or families live. It could be a house, an apartment, or a mobile home, but not a business where nobody lives.

[If Yes] **That's great! All your answers will be kept completely confidential.**

**Also, I need to ask if I am speaking with someone 18 or older.**

[If Yes] **You don't have to answer any questions you don't want to, and you can end the interview at any time.**

**And one more thing. Do you or an immediate family member work for Mesa County?**

**1. [If No] Here is the first question. Do you live within the limits of a city or town?**

	Frequency	Valid Percent
Yes	255	63.3%
No	148	36.7%
Total Valid	403	100.0%
(Don't Know/No Response)	1	
Total	404	

**2. Because your phone number was randomly selected by a computer there is no way for me to know where I am calling. Would you tell me the city, town or specific area within which you live?**

	Frequency	Valid Percent
(Clifton)	39	9.7%
(Collbran)	6	1.2%
(DeBeque)	4	1.0%
(Fruita)	33	8.2%
(Glade Park)	7	1.7%
(Grand Junction)	214	53.2%
(Loma)	4	1.0%
(Mack)	4	1.0%
(Mesa)	4	1.0%
(Molina)	2	.5%
(Orchard Mesa)	14	3.5%
(Palisade)	19	4.7%
(Redlands)	23	5.7%
(Whitewater)	3	.7%
(Unincorporated)	17	4.2%
(Other)	9	2.5%
Total Valid	402	100.0%
(Don't Know/No Answer)	2	
Total	404	

➤ See Appendix II for complete text listings.

**3. Taking all things into consideration, please rate your perception of the overall quality of life in Mesa County. Would you say it is...**

	Frequency	Valid Percent
Excellent	80	20.1%
Good	213	53.4%
About Average	81	20.3%
Not So Good	17	4.3%
Poor	8	2.0%
Total Valid	399	100.0%
(No Opinion/No Response)	5	
Total	404	

**4. Over the past three years, do you feel that the quality of life in Mesa County has ...?**

	Frequency	Valid Percent
Improved	95	24.9%
Stayed the Same	185	48.4%
Gotten Worse	102	26.7%
Total Valid	382	100.0%
(No Opinion/No Response)	22	
Total	404	

**5. In your opinion, how well does Mesa County government operate overall? Would you say...**

	Frequency	Valid Percent
Very Well	34	8.8%
Well	200	51.7%
Neither Well Nor Poor	104	26.9%
Poor	40	10.3%
Very Poor	9	2.3%
Total Valid	387	100.0%
(Don't Know/No Response)	17	
Total	404	

**6. Please rate the quality of the following services provided by Mesa County Government. Please rate them as Very Good, Good, Average, Poor or Very Poor.****6A. Road maintenance and repair.**

	Frequency	Valid Percent
Very Good	22	5.5%
Good	155	38.7%
Average	142	35.4%
Poor	75	18.7%
Very Poor	7	1.7%
Total Valid	401	100.0%
(Don't Know/No Opinion)	3	
Total	404	

**6B. Traffic control.**

	Frequency	Valid Percent
Very Good	21	5.3%
Good	153	38.4%
Average	144	36.2%
Poor	64	16.1%
Very Poor	16	4.0%
Total Valid	398	100.0%
(Don't Know/No Opinion)	6	
Total	404	

**6C. Animal control.**

	Frequency	Valid Percent
Very Good	37	10.3%
Good	168	46.9%
Average	102	28.5%
Poor	38	10.6%
Very Poor	13	3.6%
Total Valid	358	100.0%
(Don't Know/No Opinion)	46	
Total	404	

**6C. (Listed sample only)**

	Frequency	Valid Percent
Very Good	11	6.0%
Good	90	48.9%
Average	50	27.2%
Poor	25	13.6%
Very Poor	8	4.3%
Valid Total	184	100.0%
(Don't Know/No Opinion)	26	
Total Listed	210	



**6D. Public transportation.**

	Frequency	Valid Percent
Very Good	49	14.2%
Good	174	50.4%
Average	72	20.9%
Poor	43	12.5%
Very Poor	7	2.0%
Total Valid	345	100.0%
(Don't Know/No Opinion)	59	
Total	404	

**6E. Protection of public health.**

	Frequency	Valid Percent
Very Good	62	16.4%
Good	201	53.0%
Average	99	26.1%
Poor	15	4.0%
Very Poor	2	.5%
Total Valid	379	100.0%
(Don't Know/No Opinion)	25	
Total	404	

**6F. Economic assistance programs for children and adults.**

	Frequency	Valid Percent
Very Good	37	13.6%
Good	120	44.0%
Average	82	30.0%
Poor	26	9.5%
Very Poor	8	2.9%
Total Valid	273	100.0%
(Don't Know/No Opinion)	131	
Total	404	

**6F. (Listed sample only)**

	Frequency	Valid Percent
Very Good	13	8.7%
Good	66	44.0%
Average	47	31.3%
Poor	17	11.3%
Very Poor	7	4.7%
Total Valid	150	100.0%
(Don't Know/No Opinion)	60	
Total	210	

**6G. Protective services for children and adults.**

	Frequency	Valid Percent
Very Good	43	12.7%
Good	159	47.0%
Average	104	30.8%
Poor	26	7.7%
Very Poor	6	1.8%
Total Valid	338	100.0%
(Don't Know/No Opinion)	66	
Total	404	

**6H. Employment services or assistance through the workforce center.**

	Frequency	Valid Percent
Very Good	38	14.4%
Good	104	39.5%
Average	74	28.1%
Poor	32	12.2%
Very Poor	15	5.7%
Total Valid	263	100.0%
(Don't Know/No Opinion)	141	
Total	404	

**6I. Landfill operations.**

	Frequency	Valid Percent
Very Good	65	19.9%
Good	186	57.1%
Average	63	19.3%
Poor	11	3.4%
Very Poor	1	.3%
Total Valid	326	100.0%
(Don't Know/No Opinion)	78	
Total	404	

**6J. Motor vehicle registration.**

	Frequency	Valid Percent
Very Good	68	17.4%
Good	232	59.5%
Average	78	20.0%
Poor	9	2.3%
Very Poor	3	.8%
Total Valid	390	100.0%
(Don't Know/No Opinion)	14	
Total	404	

**6K. Land use planning. How good a job does the Mesa County Government do regarding land use planning?**

	Frequency	Valid Percent
Very Good	18	5.2%
Good	106	30.7%
Average	110	31.9%
Poor	87	25.2%
Very Poor	24	7.0%
Total Valid	345	100.0%
(Don't Know/No Opinion)	59	
Total	404	

**6L. Zoning enforcement (such as junk control, inoperable cars, and other land use complaints).**

	Frequency	Valid Percent
Very Good	19	5.3%
Good	104	29.2%
Average	114	32.0%
Poor	90	25.3%
Very Poor	29	8.1%
Total Valid	356	100.0%
(Don't Know/No Opinion)	47	
(No Response)	1	
Total	404	

**6M. Services offered through Tri-River Cooperative Extension programs.**

	Frequency	Valid Percent
Very Good	60	24.9%
Good	126	52.3%
Average	46	19.1%
Poor	8	3.3%
Very Poor	1	.4%
Total Valid	241	100.0%
(Don't Know/No Opinion)	163	
Total	404	

**6N. Operation of County fair grounds.**

	Frequency	Valid Percent
Very Good	38	13.5%
Good	147	52.3%
Average	68	24.2%
Poor	23	8.2%
Very Poor	5	1.8%
Total Valid	281	100.0%
(Don't Know/No Opinion)	123	
Total	404	

**60. Programming provided on Mesa County cable channel 12.**

	Frequency	Valid Percent
Very Good	30	16.9%
Good	84	47.2%
Average	48	27.0%
Poor	11	6.2%
Very Poor	5	2.8%
Total Valid	178	100.0%
(Don't Know/No Opinion)	226	
Total	404	

➤ Go to question 8.

**7. Which program on Mesa County cable channel 12 do you watch most often?**

	Frequency	Valid Percent
Supertime Solutions	18	11.0%
Inside Mesa County	36	22.1%
Family Life	19	11.7%
Other	33	20.2%
Don't watch cable channel 12	57	35.0%
Total Valid	163	100.0%
(Don't Know/No Opinion)	15	
(Not Asked)	226	
Total	404	

➤ See Appendix II for complete text listings.

**8. After I read the following statements please indicate whether you Strongly Agree, Agree, Neither Agree nor Disagree, Disagree, Strongly Disagree, or Have No Opinion.****8A. "Mesa County employees are courteous and helpful."**

	Frequency	Valid Percent
Strongly Agree	33	9.3%
Agree	275	77.2%
Neither Agree nor Disagree	28	7.9%
Disagree	11	3.1%
Strongly Disagree	9	2.5%
Total Valid	356	100.0%
(Don't Know/No Opinion)	47	
(No Response)	1	
Total	404	

**8B. "Services provided by the County are completed quickly and efficiently."  
Do you...?"**

	Frequency	Valid Percent
Strongly Agree	18	5.2%
Agree	196	57.1%
Neither Agree nor Disagree	54	15.7%
Disagree	53	15.5%
Strongly Disagree	22	6.4%
Total Valid	343	100.0%
(Don't Know/No Opinion)	61	
Total	404	

**8C. What about: "Mesa County employees respond quickly to questions and concerns"?"**

	Frequency	Valid Percent
Strongly Agree	33	10.2%
Agree	190	59.0%
Neither Agree nor Disagree	55	17.1%
Disagree	31	9.6%
Strongly Disagree	13	4.0%
Total Valid	322	100.0%
(Don't Know/No Opinion)	80	
(No Response)	2	
Total	404	

**8D. "Mesa County employees seem well informed and skilled in their service areas."**

	Frequency	Valid Percent
Strongly Agree	34	10.1%
Agree	206	61.1%
Neither Agree nor Disagree	43	12.8%
Disagree	45	13.4%
Strongly Disagree	9	2.7%
Total Valid	337	100.0%
(Don't Know/No Opinion)	67	
Total	404	

**8E. "Mesa County services are easy to locate."**

	Frequency	Valid Percent
Strongly Agree	45	12.0%
Agree	236	62.8%
Neither Agree nor Disagree	40	10.6%
Disagree	52	13.8%
Strongly Disagree	3	.8%
Total Valid	376	100.0%
(Don't Know/No Opinion)	28	
Total	404	

**8F. "Mesa County services are convenient to use."**

	Frequency	Valid Percent
Strongly Agree	32	8.9%
Agree	235	65.3%
Neither Agree nor Disagree	37	10.3%
Disagree	48	13.3%
Strongly Disagree	8	2.2%
Total Valid	360	100.0%
(Don't Know/No Opinion)	44	
Total	404	

**8G. "Mesa County government and the other governments in the county do a good job of working together to get things done."**

	Frequency	Valid Percent
Strongly Agree	15	4.5%
Agree	169	51.2%
Neither Agree nor Disagree	56	17.0%
Disagree	66	20.0%
Strongly Disagree	24	7.3%
Total Valid	330	100.0%
(Don't Know/No Opinion)	73	
(No Response)	1	
Total	404	

**9. Next, I'd like your opinion on specific conditions here in Mesa County. Please rate each of the following conditions as Very Good, Good, Average, Poor, Very Poor or if you have No Opinion.**

**9A. The first one is: Ease of travel as a motorist.**

	Frequency	Valid Percent
Very Good	30	7.6%
Good	176	44.4%
Average	117	29.5%
Poor	61	15.4%
Very Poor	12	3.0%
Total Valid	396	100.0%
(Don't Know/No Opinion)	8	
Total	404	

**9B. What about: Ease of travel as a bicyclist. Is it...?**

	Frequency	Valid Percent
Very Good	16	6.3%
Good	75	29.3%
Average	77	30.1%
Poor	72	28.1%
Very Poor	16	6.3%
Total Valid	256	100.0%
(Don't Know/No Opinion)	148	
Total	404	

**9C. Ease of travel as a pedestrian.**

	Frequency	Valid Percent
Very Good	22	6.3%
Good	155	44.4%
Average	118	33.8%
Poor	40	11.5%
Very Poor	14	4.0%
Total Valid	349	100.0%
(Don't Know/No Opinion)	55	
Total	404	



**9D. Conservation of open space.**

	Frequency	Valid Percent
Very Good	44	12.0%
Good	167	45.5%
Average	86	23.4%
Poor	52	14.2%
Very Poor	18	4.9%
Total Valid	367	100.0%
(Don't Know/No Opinion)	36	
(No Response)	1	
Total	404	

**9E. Job opportunities.**

	Frequency	Valid Percent
Very Good	12	3.6%
Good	47	14.0%
Average	95	28.4%
Poor	127	37.9%
Very Poor	54	16.1%
Total Valid	335	100.0%
(Don't Know/No Opinion)	69	
Total	404	

**9F. Air quality.**

	Frequency	Valid Percent
Very Good	58	14.4%
Good	198	49.3%
Average	106	26.4%
Poor	34	8.5%
Very Poor	6	1.5%
Total Valid	402	100.0%
(Don't Know/No Opinion)	2	
Total	404	

**9G. Availability of affordable housing.**

	Frequency	Valid Percent
Very Good	15	4.3%
Good	65	18.5%
Average	106	30.2%
Poor	112	31.9%
Very Poor	53	15.1%
Total Valid	351	100.0%
(Don't Know/No Opinion)	52	
(No Response)	1	
Total	404	

**9H. Opportunities for outdoor recreation.**

	Frequency	Valid Percent
Very Good	211	53.1%
Good	146	36.8%
Average	31	7.8%
Poor	7	1.8%
Very Poor	2	.5%
Total Valid	397	100.0%
(Don't Know/No Opinion)	7	
Total	404	

**10. Now we turn to a set of questions about crime. How safe do you feel in your neighborhood? Would you say you feel...?**

	Frequency	Valid Percent
Very Safe	169	41.8%
Safe	147	36.4%
Somewhat Safe	75	18.6%
Unsafe	13	3.2%
Total Valid	404	100.0%

**11. Which (if any) do you perceive as the most serious crime problem in your neighborhood?**

	Frequency	Valid Percent
Theft and burglary	72	18.0%
Violent crimes	3	.7%
Traffic control	40	10.0%
Drug abuse	58	14.5%
Vandalism	28	7.0%
Domestic violence	7	1.7%
Code enforcement	12	3.0%
No serious crime problems in my neighborhood.	175	43.6%
Other	6	1.5%
Total Valid	401	100.0%
(Don't Know/No Opinion)	3	
Total	404	

**12. If you or a loved one needed emergency assistance from the Sheriff's Department, what is your level of confidence in their ability to provide effective assistance? Is it...?**

	Frequency	Valid Percent
Very High	91	23.3%
High	144	36.8%
Neither High nor Low	118	30.2%
Low	25	6.4%
Very Low	13	3.3%
Total Valid	391	100.0%
(Don't Know/No Opinion)	12	
(No Response)	1	
Total	404	

**13. The following set of questions will tell Mesa County officials how you feel about specific policy issues and policy directions. To what extent do you agree with the following statements about growth management in Mesa County?**

**Please indicate if you Strongly Agree, Agree, Neither Agree nor Disagree, Disagree, Strongly Disagree, or Have No Opinion.**

**13A. "The County should purchase land and maintain it as open space."**

	Frequency	Valid Percent
Strongly Agree	80	21.6%
Agree	196	52.8%
Neither Agree nor Disagree	33	8.9%
Disagree	52	14.0%
Strongly Disagree	10	2.7%
Total Valid	371	100.0%
(Don't Know/No Opinion)	33	
Total	404	

**13A. (Listed sample only)**

	Frequency	Valid Percent
(Strongly Agree)	38	19.3%
(Agree)	115	58.4%
(Neither Agree nor Disagree)	12	6.1%
(Disagree)	25	12.7%
(Strongly Disagree)	7	3.6%
Total Valid	197	100.0%
(Don't Know/No Opinion)	13	
Total Listed	210	

**13B. "The County should require that any development in Mesa County strictly adheres to land use plans."**

	Frequency	Valid Percent
Strongly Agree	100	27.2%
Agree	212	57.6%
Neither Agree nor Disagree	21	5.7%
Disagree	31	8.4%
Strongly Disagree	4	1.1%
Total Valid	368	100.0%
(Don't Know/No Opinion)	36	
Total	404	

**13C. "The County should DECREASE the number of houses that can be built per acre in rural unincorporated areas of Mesa County."**

	Frequency	Valid Percent
Strongly Agree	95	25.5%
Agree	166	44.5%
Neither Agree nor Disagree	26	7.0%
Disagree	72	19.3%
Strongly Disagree	14	3.8%
Total Valid	373	100.0%
(Don't Know/No Opinion)	31	
Total	404	

**13D. "Mesa County should INCREASE the number of houses that can be built per acre in rural unincorporated Mesa County."**

	Frequency	Valid Percent
Strongly Agree	12	3.3%
Agree	38	10.4%
Neither Agree nor Disagree	32	8.7%
Disagree	194	52.9%
Strongly Disagree	91	24.8%
Total Valid	367	100.0%
(Don't Know/No Opinion)	37	
Total	404	

**13E. "Mesa County should set specific architectural or building standards on the appearance of COMMERCIAL buildings in Mesa County."**

	Frequency	Valid Percent
Strongly Agree	43	11.6%
Agree	184	49.7%
Neither Agree nor Disagree	32	8.6%
Disagree	93	25.1%
Strongly Disagree	18	4.9%
Total Valid	370	100.0%
(Don't Know/No Opinion)	34	
Total	404	

**14. Rather than purchasing land for open space, the County can purchase development rights. When the County purchases development rights, the land owner agrees not to develop his or her land. The land remains private property and the landowner may use it for agricultural or other compatible uses.**

**I will read another set of statements. Again, please tell me whether you Strongly Agree, Agree, Neither Agree nor Disagree, Disagree, Strongly Disagree, or Have No Opinion.**

**14A. "Mesa County should use tax dollars to fund a 'purchase of development rights' program to conserve open space."**

	Frequency	Valid Percent
Strongly Agree	36	9.8%
Agree	163	44.4%
Neither Agree nor Disagree	33	9.0%
Disagree	110	30.0%
Strongly Disagree	25	6.8%
Total Valid	367	100.0%
(Don't Know/No Opinion)	37	
Total	404	

**14B. "Mesa County should use lottery dollars to fund a 'purchase of development rights' program to conserve open space." Do you...?**

	Frequency	Valid Percent
Strongly Agree	61	16.2%
Agree	204	54.1%
Neither Agree nor Disagree	16	4.2%
Disagree	70	18.6%
Strongly Disagree	26	6.9%
Total Valid	377	100.0%
(Don't Know/No Opinion)	27	
Total	404	

**14C. How about the statement: "I would support a new tax specifically for growth management and purchase of development rights"?**

	Frequency	Valid Percent
Strongly Agree	16	4.2%
Agree	83	22.0%
Neither Agree nor Disagree	14	3.7%
Disagree	191	50.7%
Strongly Disagree	73	19.4%
Total Valid	377	100.0%
(Don't Know/No Opinion)	27	
Total	404	

**15. And do you believe that Mesa County regulations on new development are...?**

	Frequency	Valid Percent
Too strict	50	16.1%
About right	161	51.8%
Not strict enough	100	32.2%
Total Valid	311	100.0%
(No opinion)	91	
(No response)	2	
Total	404	

**Back to community and economic development in Mesa County. To what extent do you agree with the following statements?**

**16A. "Mesa County should use county funds to encourage new companies to locate here." Do you...?**

	Frequency	Valid Percent
Strongly Agree	60	15.3%
Agree	182	46.5%
Neither Agree nor Disagree	33	8.4%
Disagree	93	23.8%
Strongly Disagree	23	5.9%
Total Valid	391	100.0%
(Don't Know/No Opinion)	13	
Total	404	

**16A. (Listed sample only)**

	Frequency	Valid Percent
Strongly Agree	30	15.0%
Agree	103	51.5%
Neither Agree nor Disagree	21	10.5%
Disagree	37	18.5%
Strongly Disagree	9	4.5%
Total Valid	200	100.0%
(Don't Know/No Opinion)	10	
Total Listed	210	

**16B. "Mesa County should use county funds to help businesses already located in Mesa County to expand."**

	Frequency	Valid Percent
Strongly Agree	60	15.5%
Agree	211	54.5%
Neither Agree nor Disagree	27	7.0%
Disagree	80	20.7%
Strongly Disagree	9	2.3%
Total Valid	387	100.0%
(Don't Know/No Opinion)	17	
Total	404	

**16C. "Mesa County should use county funds to subsidize the building of low and moderate income housing."**

	Frequency	Valid Percent
Strongly Agree	52	13.6%
Agree	207	54.0%
Neither Agree nor Disagree	27	7.0%
Disagree	82	21.4%
Strongly Disagree	15	3.9%
Total Valid	383	100.0%
(Don't Know/No Opinion)	21	
Total	404	



**The last questions are about you. The answers to these questions will help us classify the results we obtain and will only be used when combined with the hundreds of other interviews conducted for this survey.**

**17. Approximately how long have you lived in Mesa County?**

	Frequency	Valid Percent
1 to 5 years	91	22.6%
6 to 10 years	71	17.6%
11 to 15 years	45	11.2%
16 to 20 years	35	8.7%
More than 21 years	161	40.0%
Total Valid	403	100.0%
(No Response)	1	
Total	404	

**18. In which of the following categories is your age?**

	Frequency	Valid Percent
18 to 24	20	5.0%
25 to 34	44	11.0%
35 to 44	57	14.2%
45 to 54	106	26.4%
55 to 64	71	17.7%
65 and older	103	25.7%
Total Valid	401	100.0%
(Refused)	3	
Total	404	

**19. This is the end of the survey. Do you have any comments that you would like to make at this time?**

- See Appendix III for complete text listings.

**20. Respondent's Sex.** (Code without asking.)

	Frequency	Valid Percent
Male	171	42.5%
Female	231	57.5%
Total Valid	402	100.0%
(Can't Tell)	2	
Total	404	

**20.** (Listed sample only)

	Frequency	Valid Percent
Male	101	48.1
Female	109	51.9
Total Listed	210	100.0

**21. Respondent's Zip code.**

	Frequency	Valid Percent
81501	26	6.4%
81502	0	0.0%
81503	167	41.3%
81504	75	18.6%
81505	15	3.7%
81506	21	5.2%
81520	20	5.0%
81521	35	8.7%
81522	0	0.0%
81523	6	1.5%
81524	2	.5%
81525	2	.5%
81526	20	5.0%
81527	2	.5%
81624	6	1.5%
81630	3	.7%
81643	3	.7%
81646	1	.2%
Total	404	100.0%

## APPENDIX 2

**2. Because your phone number was randomly selected by a computer there is no way for me to know where I am calling. Would you tell me the city, town or specific area within which you live? [If Other]**

- Appleton (2)
- Fruitvale (3)
- Northside
- Ridges
- Seminal Court

### APPENDIX 3

#### 7. Which program on Mesa County cable channel 12 do you watch most often?

[If Other]

- Charlie Brown-Clean Teeth.
- City Council meetings. (6)
- City meetings and the west Nile virus show.
- Community events.
- County commissioners.
- C-Span.
- Division of wildlife one.
- Haven't watched any of the programs very much.
- Hunter's safety.
- I watch a little bit of everything.
- Just watch occasionally.
- Land use planning.
- News hour with Jim Lehrer.
- News. (2)
- Not sure.
- Our Town.
- People come in from the community for interviews and debates.
- Satellite.
- School Rundown.
- Shows of hearing and things of that nature.
- Temperature.
- The planning and zoning.
- Usually all.
- Whatever is on.

## APPENDIX 4

### **19. This is the end of the survey. Do you have any comments that you would like to make at this time?**

#### **Problems/Suggestions**

- 3 strong opinions: 1. Air quality bad; 2. Major need for parking for college population, or move entire college to Fruita; 3. Too many community county services, need to consolidate.
- As far as the animal control goes they should get rid of the policy where you have to deal with the 1st incident yourself. What are they there for then??
- Bus system: they aren't utilizing it properly-run every half hour in morning, once an hour in the day, half hour at night. They should run them until midnight so people going to the mall or something can get around.
- Companies only stay when tax incentives are good.
- County and the city find ways to manipulate each other in order to get what they want.
- County Commissioners are too willing to change zoning or land use plans.
- Disagrees strongly with eminent domain. Should only be used for highway/ water use (public issues). Shouldn't be used when annexing for tax purposes in order to get more money, etc.
- Disappointed in the road maintenance while things are being worked on. All over town it is bad, make a better effort to make things smoother.
- Employment: salaries- they should be addressed- they are kept extremely low, the county should make an effort to help employees in Mesa County to have a better standard of living.
- Get rid of that yellow building on North Avenue.
- Growth regulations in unincorporated areas need to be strengthened, and more assistance to small communities is needed.
- I believe that the lights should be truly timed so that someone can't just drive up to them and set them off. Especially 5th street, 4th street the last light, the highway to the mall, on North Avenue, and main street.
- I don't understand how land value is going up and the county isn't pursuing new job opportunities. Mesa County has too much authority in developing and it should be more private.
- I have a tough time with BLM lands and those types of things around the area.
- I think overall there are quality of life improvements due to conveniences, but there is decrease because of population growth. So I think that it is a catch-22.

- I think the crime in this town is out of control. City council hampers development; I don't know why they don't do something to help out the businesses here.
- I think the world is changing increasingly in speed and I hope the county government can keep up with the speed, and I think the survey is one element of that.
- I think they should have a watch-dog committee to make sure funds are allocated the ways they should be.
- I think they should not charge for local state parks within the city.
- I think we need to get the drug problem under control and more jobs. Wages should be higher and we need to clean up our parks and recreation.
- I wish they didn't make the valley grow as much as they have. We don't need these outsiders.
- I would like to see the county take a much stronger stand on their land use policies. To be a little tougher on development. Otherwise you are shortchanging your community.
- I'd like to see the people that are spending the taxpayers' money stick to their budget better.
- I'm sad about the Sun Strand leaving. Maybe they could put a new youth center in.
- It would be nice if the results would be posted in the paper so we could see what the population in Mesa County thinks.
- It would be nice to see a library and recreation center built in the community.
- Land planner should manage, engineers should have no control.
- Like to see an increase in wages. The wages are especially low compared to the cost of living.
- Like to see more job availability and higher paying jobs. Work with companies to decrease outsourcing.
- Mesa County is in a real state of turmoil. Roundabouts take precedent over important issues. Traffic is just eating us up-there is no good north/south or east/west corridors.
- Money should go to the school and not on parks and animals; help the people who live there make a decent wage.
- More activities for young kids and young adults to do.
- Most concerned with low wages, lack of jobs, no middle class citizens, lack of affordable housing.
- Need good jobs and good people.
- Need more specific questions on the survey; questions are too general.
- Need to build a Civic Center such as Rapid City did.
- No young children but Mesa County should develop something like a Boys and Girls Town.
- Outside business incentives by nature are discriminatory toward businesses already here and shouldn't occur.

- Plan for growth rather than react to it.
- Poor folks need a whole lot more attention, need more jobs and health care, and a lot more respect.
- Recently passed a new law for a building permit that's outrageous. Prices have risen too far. Transportation fee? Very wrong...
- Sheriffs' office does not seem helpful when calling.
- Should have asked about Mesa State College. Try to make it a university to help the county.
- Should stop high density subdivisions in rural areas, in other words stick to code.
- Shouldn't have to get a permit for maintenance to improve things in a house, building, etc.
- Tax money should be put into care for domestic violence victims. And the police department should be more conscious of rape.
- The building and planning departments are far too anal, picky and strict. But the customer relations are very good, especially for the building department, health, planning, etc.
- The city has too much control over buildings (in Grand Junction). They have too much control. They make you put in landscaping and trees, it is unaffordable; the county is the same way.
- The county doesn't use its funds properly, whether they are from the people, lottery, or federal.
- The county needs to be reasonable in the review periods for development. They should put in a time limit to adhere to in reviewing proposals. The county should be a little more proactive in conservation of open space.
- The county should do more research before they start handing out our tax money. It would make it more productive.
- The county should look into recycling more. It would cost less if they recycled more.
- The county should start encouraging businesses to pay their employees more money. There are a lot of young people who can't find jobs in Mesa County and they leave the area.
- The growth is going very strong and maybe too fast.
- The growth is so fast and it is just city people. The people moving in want it to change into a city and that is not right.
- The juvenile and law enforcement system is pretty bad. The justice system really sucks, it's not fair. They pick and choose. It's all a money system.
- The lack of jobs and companies leaving the area, and the jobs that are there do not pay anything. They are poverty level jobs. The pay comes nowhere near the cost of living in Mesa County.
- The only thing that county needs is to bring businesses in that pay more so that people can afford to live in Mesa County.

- The pay rate at which employment is around here does not seem to coincide with the housing. They do not pay enough around here. The pay rate is surprisingly very low in accordance to housing prices.
- The primary concerns should be to protect natural resources like land air and water quality. Be careful with the interpretation of the survey not to support personal initiatives. Look into the future and make good decisions.
- The roads need to be cleaned up after accidents so people don't have to drive through the broken glass and pieces of metal left on the road.
- The roads need to be opened up to reduce the "road rage" that exists right now. The city is growing rapidly and if actions aren't taken soon there will a problem.
- The survey questions are loaded so you answer a certain way. I had trouble answering them, for example the question about open space needed to be defined better. Use open-ended. Use Colorado colleges for surveying.
- The traffic lights changing needs to be updated due to the rapid growth in traffic volume.
- The utilities are outrageous here!
- The wages are low, and it is hard to find a company that has benefits, for those who need health care and too be able to earn a decent living.
- There are too many different categories of responses for the answers. This survey may be too complicated to handle the over phone.
- There is parochial vision of Mesa County development, there is lack of planning. Planning needs to accommodate a vision in general to manage land use and activities better.
- There is too much housing in the county for the amount of water there is. Industry needs to be brought in. The housing price is out of line for the wages.
- There should be a question about the library bill. The county wants a new library but the building proposed is ugly and that is why it keeps failing. This is a result of a failure of leadership from the library.
- They need to do a better job of planning roads and schools.
- They need to do something about economic development in terms of jobs. We're losing our talented young people. The salaries for professional people are too low.
- They need to make some kind of recreation center. Law enforcement looks down on people who live in certain areas and they need to not judge so quickly.
- They need to totally revamp the department of social services, every department.
- They used tax money for that and I think they should be working on that because the money has already been allocated for that.
- Think there should have been something about education in the survey, because education is a very important issue.
- Thinks land use should be legislated rather than have a policy board and be done with considerable input from county residents.



- Traffic development and planning is years behind. Ideas may be good but we are always playing catch up and we never deal with the present.
- Traffic problem.
- Traffic problems- not wider streets, more intense development- a neighborhood.
- Try to not waste the county tax money; don't just give it away on frivolous aspects. Don't support people's personal hobbies; let them do that on their own.
- Underage drinking is a problem.
- Very concerned about what they are allowing to be built. Not careful enough in what they are allowing in the zoning. Some things they are allowing should not be there.
- We don't have the job base we need.
- We have uncontrolled growth. Our infrastructure is suffering. It is a hassle to go anywhere.
- We need better paying jobs because the housing is way out of line. We only have minimum wage paying jobs. I was making more money twenty years ago than I am today.
- We need new blood in the political system. Non-Mesa County natives. Natives lead to a conflict of interest, alliances.
- We need to have professionals in positions of expanding growth instead of volunteer work. And pay them so that they can deal with the new growth problems that come up and so that they won't be influenced by their peers.
- We're moving because you will not pay for a new library. You mean Mesa County Administration.
- Why did you go out of state to get the survey done instead of staying in state?
- Wish the planning department and government would follow the plans they set down, and that more tax dollars went to road maintenance.
- Would like to see diversity in the architectural style.
- Would like to see five commissioners instead of three.
- Would like to see the county enforce the lighting ordinance and the new addressing up in Glade Park. Would like to see the lights off at 10 like they are supposed to be.
- Would like to stress Code Enforcement - it is a weak spot in Mesa County.
- Young people should take better advantage of outdoor recreation opportunities.

### **Compliments**

- Building department is very professional. Sheriff's Department is very professional.
- Customer relations are very good, especially for the building department, health, planning, etc.
- Generally, it's a great place to live.

- Good to see the County going out and checking the quality of their services.
- I like Mesa County a lot.
- I like Mesa County, I like how it works. I like its school system. They are progressing and moving ahead. I am very satisfied with my county.
- I lived here for 90 yrs. and I love it.
- I think I live in a good area.
- I'm glad they are doing this, it was very interesting.
- I'm glad they are finding out what people think.
- I'm very happy with the new fire department in the Redlands.
- It was a pleasure being able to participate in something that will better my community.
- Mesa County has had a wake up call in the last four or five years. The people running the county seem to be turning around the past trends, helping to conserve open space.
- No, it's a great place to live.
- One of the best things the county is doing is the purchase of development rights.
- The county is doing a good job.
- The government is doing the best it can with the circumstances it has. They can work towards an amicable solution.
- This is a good idea to get opinions from the people.
- This was a good survey.

### **Other**

- Commissioners and officials use these results to help out our community.
- I hope the survey results will help out and not be wasted time.
- I hope this survey goes on to do something good.
- I like living outside the city limits.
- I'll be interested in the results from this survey.
- People that have worked on the canyon lands and now they are going to call it McGinnis Canyon Lands and that is right.
- The money spent for infrastructure.
- They have had plans to put a bridge across from Grand Junction over into Orchard Mesa.
- Town where kids and teenagers should be able to go.

## APPENDIX 5

## Cross-tabulations by Area.

Table A.1: Crosstabs (insig.) of Area by Zoning Enforcement.

	1. (Very Good)	2. (Good)	3. (Average)	4. (Poor)	5. (Very Poor)	Total
01. (Clifton)	1	6	16	8	4	35
	2.9%	17.1%	45.7%	22.9%	11.4%	100.0%
02. (Collbran)	0	3	2	0	0	5
	.0%	60.0%	40.0%	.0%	.0%	100.0%
03. (DeBeque)	1	1	2	0	0	4
	25.0%	25.0%	50.0%	.0%	.0%	100.0%
04. (Fruita)	3	9	9	9	1	31
	9.7%	29.0%	29.0%	29.0%	3.2%	100.0%
06. (Glade Park)	0	1	2	3	1	7
	.0%	14.3%	28.6%	42.9%	14.3%	100.0%
07. (Grand Junction)	12	64	54	42	14	186
	6.5%	34.4%	29.0%	22.6%	7.5%	100.0%
08. (Loma)	0	1	0	3	0	4
	.0%	25.0%	.0%	75.0%	.0%	100.0%
09. (Mack)	0	1	0	2	0	3
	.0%	33.3%	.0%	66.7%	.0%	100.0%
10. (Mesa)	0	1	1	2	0	4
	.0%	25.0%	25.0%	50.0%	.0%	100.0%
11. (Molina)	0	2	0	0	0	2
	.0%	100.0%	.0%	.0%	.0%	100.0%
12. (Orchard Mesa)	0	2	7	3	1	13
	.0%	15.4%	53.8%	23.1%	7.7%	100.0%
13. (Palisade)	1	7	3	3	2	16
	6.3%	43.8%	18.8%	18.8%	12.5%	100.0%
14. (Redlands)	0	4	9	7	1	21
	.0%	19.0%	42.9%	33.3%	4.8%	100.0%
15. (Whitewater)	0	0	0	1	1	2
	.0%	.0%	.0%	50.0%	50.0%	100.0%
16. (Unincorporated)	1	1	6	5	1	14
	7.1%	7.1%	42.9%	35.7%	7.1%	100.0%
17. (Other)	0	1	3	1	2	7
	.0%	14.3%	42.9%	14.3%	28.6%	100.0%
Total	19	104	114	89	28	354
	5.4%	29.4%	32.2%	25.1%	7.9%	100.0%

**Table A.2: Crosstabs (insig.) of Area by Confidence in Sheriff's Department in emergency.**

	1. Very High	2. High	3. Neither	4. Low	5. Very Low	Total
01. (Clifton)	16	8	11	2	2	39
	41.0%	20.5%	28.2%	5.1%	5.1%	100.0%
02. (Collbran)	1	1	1	1	2	6
	16.7%	16.7%	16.7%	16.7%	33.3%	100.0%
03. (DeBeque)	1	1	2	0	0	4
	25.0%	25.0%	50.0%	.0%	.0%	100.0%
04. (Fruita)	10	12	9	2	0	33
	30.3%	36.4%	27.3%	6.1%	.0%	100.0%
06. (Glade Park)	0	2	5	0	0	7
	.0%	28.6%	71.4%	.0%	.0%	100.0%
07. (Grand Junction)	44	79	62	13	4	202
	21.8%	39.1%	30.7%	6.4%	2.0%	100.0%
08. (Loma)	1	1	1	0	1	4
	25.0%	25.0%	25.0%	.0%	25.0%	100.0%
09. (Mack)	0	2	0	0	2	4
	.0%	50.0%	.0%	.0%	50.0%	100.0%
10. (Mesa)	1	2	1	0	0	4
	25.0%	50.0%	25.0%	.0%	.0%	100.0%
11. (Molina)	1	1	0	0	0	2
	50.0%	50.0%	.0%	.0%	.0%	100.0%
12. (Orchard Mesa)	4	6	3	1	0	14
	28.6%	42.9%	21.4%	7.1%	.0%	100.0%
13. (Palisade)	3	8	6	1	1	19
	15.8%	42.1%	31.6%	5.3%	5.3%	100.0%
14. (Redlands)	3	10	7	2	1	23
	13.0%	43.5%	30.4%	8.7%	4.3%	100.0%
15. (Whitewater)	0	0	1	2	0	3
	.0%	.0%	33.3%	66.7%	.0%	100.0%
16. (Unincorporated)	4	7	4	1	0	16
	25.0%	43.8%	25.0%	6.3%	.0%	100.0%
17. (Other)	2	4	3	0	0	9
	22.2%	44.4%	33.3%	.0%	.0%	100.0%
<b>Total</b>	<b>91</b>	<b>144</b>	<b>116</b>	<b>25</b>	<b>13</b>	<b>389</b>
	23.4%	37.0%	29.8%	6.4%	3.3%	100.0%

**Table A.3: Crosstabs (insig.) of Area by "The County should purchase land and maintain it as open space."**

	1. (Strongly Agree)	2. (Agree)	3. (Neither Agree nor Disagree)	4. (Disagree)	5. (Strongly Disagree)	Total
01. (Clifton)	7	22	3	4	0	36
	19.4%	61.1%	8.3%	11.1%	.0%	100.0%
02. (Collbran)	1	4	0	0	0	5
	20.0%	80.0%	.0%	.0%	.0%	100.0%
03. (DeBeque)	2	0	1	1	0	4
	50.0%	.0%	25.0%	25.0%	.0%	100.0%
04. (Fruita)	3	17	5	5	2	32
	9.4%	53.1%	15.6%	15.6%	6.3%	100.0%
06. (Glade Park)	1	1	0	4	1	7
	14.3%	14.3%	.0%	57.1%	14.3%	100.0%
07. (Grand Junction)	41	109	18	24	5	197
	20.8%	55.3%	9.1%	12.2%	2.5%	100.0%
08. (Loma)	2	0	0	1	1	4
	50.0%	.0%	.0%	25.0%	25.0%	100.0%
09. (Mack)	0	3	0	0	0	3
	.0%	100.0%	.0%	.0%	.0%	100.0%
10. (Mesa)	1	2	1	0	0	4
	25.0%	50.0%	25.0%	.0%	.0%	100.0%
11. (Molina)	1	1	0	0	0	2
	50.0%	50.0%	.0%	.0%	.0%	100.0%
12. (Orchard Mesa)	3	3	2	3	0	11
	27.3%	27.3%	18.2%	27.3%	.0%	100.0%
13. (Palisade)	3	9	0	3	0	15
	20.0%	60.0%	.0%	20.0%	.0%	100.0%
14. (Redlands)	9	12	1	0	0	22
	40.9%	54.5%	4.5%	.0%	.0%	100.0%
15. (Whitewater)	0	1	0	1	0	2
	.0%	50.0%	.0%	50.0%	.0%	100.0%
16. (Unincorporated)	4	5	2	5	0	16
	25.0%	31.3%	12.5%	31.3%	.0%	100.0%
17. (Other)	2	6	0	1	0	9
	22.2%	66.7%	.0%	11.1%	.0%	100.0%
Total	80	195	33	52	9	369
	21.7%	52.8%	8.9%	14.1%	2.4%	100.0%

**Table A.4: Crosstabs (insig.) of Area by "The County should require that any development strictly adheres to land use plans."**

	1. (Strongly Agree)	2. (Agree)	3. (Neither Agree nor Disagree)	4. (Disagree)	5. (Strongly Disagree)	Total
01. (Clifton)	10	20	2	1	0	33
	30.3%	60.6%	6.1%	3.0%	.0%	100.0%
02. (Collbran)	1	3	0	1	0	5
	20.0%	60.0%	.0%	20.0%	.0%	100.0%
03. (DeBeque)	2	0	0	1	0	3
	66.7%	.0%	.0%	33.3%	.0%	100.0%
04. (Fruita)	8	13	3	5	0	29
	27.6%	44.8%	10.3%	17.2%	.0%	100.0%
06. (Glade Park)	1	4	0	1	0	6
	16.7%	66.7%	.0%	16.7%	.0%	100.0%
07. (Grand Junction)	48	124	10	17	2	201
	23.9%	61.7%	5.0%	8.5%	1.0%	100.0%
08. (Loma)	0	3	0	0	1	4
	.0%	75.0%	.0%	.0%	25.0%	100.0%
09. (Mack)	1	1	1	0	0	3
	33.3%	33.3%	33.3%	.0%	.0%	100.0%
10. (Mesa)	1	3	0	0	0	4
	25.0%	75.0%	.0%	.0%	.0%	100.0%
11. (Molina)	1	0	0	0	0	1
	100.0%	.0%	.0%	.0%	.0%	100.0%
12. (Orchard Mesa)	9	2	2	0	0	13
	69.2%	15.4%	15.4%	.0%	.0%	100.0%
13. (Palisade)	4	10	3	1	1	19
	21.1%	52.6%	15.8%	5.3%	5.3%	100.0%
14. (Redlands)	9	12	0	1	0	22
	40.9%	54.5%	.0%	4.5%	.0%	100.0%
15. (Whitewater)	0	2	0	0	0	2
	.0%	100.0%	.0%	.0%	.0%	100.0%
16. (Unincorporated)	4	8	0	2	0	14
	28.6%	57.1%	.0%	14.3%	.0%	100.0%
17. (Other)	1	7	0	0	0	8
	12.5%	87.5%	.0%	.0%	.0%	100.0%
Total	100	212	21	30	4	367
	27.2%	57.8%	5.7%	8.2%	1.1%	100.0%

**Table A.5: Crosstabs (insig.) of Area by " Mesa Co. should DECREASE the number of houses that can be built per acre in rural unincorporated Mesa County."**

	1. (Strongly Agree)	2. (Agree)	3. (Neither Agree nor Disagree)	4. (Disagree)	5. (Strongly Disagree)	Total
01. (Clifton)	14	15	1	5	1	36
	38.9%	41.7%	2.8%	13.9%	2.8%	100.0%
02. (Collbran)	1	4	0	0	0	5
	20.0%	80.0%	.0%	.0%	.0%	100.0%
03. (DeBeque)	2	1	0	1	0	4
	50.0%	25.0%	.0%	25.0%	.0%	100.0%
04. (Fruita)	4	15	3	6	1	29
	13.8%	51.7%	10.3%	20.7%	3.4%	100.0%
06. (Glade Park)	1	2	0	3	1	7
	14.3%	28.6%	.0%	42.9%	14.3%	100.0%
07. (Grand Junction)	52	89	19	38	4	202
	25.7%	44.1%	9.4%	18.8%	2.0%	100.0%
08. (Loma)	0	1	0	0	2	3
	.0%	33.3%	.0%	.0%	66.7%	100.0%
09. (Mack)	1	3	0	0	0	4
	25.0%	75.0%	.0%	.0%	.0%	100.0%
10. (Mesa)	1	1	0	1	1	4
	25.0%	25.0%	.0%	25.0%	25.0%	100.0%
11. (Molina)	1	0	0	0	0	1
	100.0%	.0%	.0%	.0%	.0%	100.0%
12. (Orchard Mesa)	5	6	0	1	0	12
	41.7%	50.0%	.0%	8.3%	.0%	100.0%
13. (Palisade)	3	7	1	5	2	18
	16.7%	38.9%	5.6%	27.8%	11.1%	100.0%
14. (Redlands)	4	11	1	6	0	22
	18.2%	50.0%	4.5%	27.3%	.0%	100.0%
15. (Whitewater)	1	1	0	0	0	2
	50.0%	50.0%	.0%	.0%	.0%	100.0%
16. (Unincorporated)	3	6	1	3	1	14
	21.4%	42.9%	7.1%	21.4%	7.1%	100.0%
17. (Other)	2	3	0	3	0	8
	25.0%	37.5%	.0%	37.5%	.0%	100.0%
Total	95	165	26	72	13	371
	25.6%	44.5%	7.0%	19.4%	3.5%	100.0%

**Table A.6: Crosstabs (insig.) of Area by " Mesa County should INCREASE the number of houses that can be built per acre in rural unincorporated Mesa County."**

	1. (Strongly Agree)	2. (Agree)	3. (Neither Agree nor Disagree)	4. (Disagree)	5. (Strongly Disagree)	Total
01. (Clifton)	1	4	2	14	13	34
	2.9%	11.8%	5.9%	41.2%	38.2%	100.0%
02. (Collbran)	0	1	0	4	0	5
	.0%	20.0%	.0%	80.0%	.0%	100.0%
03. (DeBeque)	1	0	0	2	1	4
	25.0%	.0%	.0%	50.0%	25.0%	100.0%
04. (Fruita)	2	3	3	16	4	28
	7.1%	10.7%	10.7%	57.1%	14.3%	100.0%
06. (Glade Park)	0	0	0	3	2	5
	.0%	.0%	.0%	60.0%	40.0%	100.0%
07. (Grand Junction)	4	21	23	104	48	200
	2.0%	10.5%	11.5%	52.0%	24.0%	100.0%
08. (Loma)	1	1	0	1	0	3
	33.3%	33.3%	.0%	33.3%	.0%	100.0%
09. (Mack)	0	0	0	3	1	4
	.0%	.0%	.0%	75.0%	25.0%	100.0%
10. (Mesa)	1	0	0	2	1	4
	25.0%	.0%	.0%	50.0%	25.0%	100.0%
11. (Molina)	0	0	0	0	1	1
	.0%	.0%	.0%	.0%	100.0%	100.0%
12. (Orchard Mesa)	0	0	1	7	5	13
	.0%	.0%	7.7%	53.8%	38.5%	100.0%
13. (Palisade)	1	3	1	11	2	18
	5.6%	16.7%	5.6%	61.1%	11.1%	100.0%
14. (Redlands)	0	3	1	12	5	21
	.0%	14.3%	4.8%	57.1%	23.8%	100.0%
15. (Whitewater)	0	0	0	1	1	2
	.0%	.0%	.0%	50.0%	50.0%	100.0%
16. (Unincorporated)	1	0	1	9	4	15
	6.7%	.0%	6.7%	60.0%	26.7%	100.0%
17. (Other)	0	2	0	4	2	8
	.0%	25.0%	.0%	50.0%	25.0%	100.0%
Total	12	38	32	193	90	365
	3.3%	10.4%	8.8%	52.9%	24.7%	100.0%



**Table A.7: Crosstabs (insig.) of Area by "Mesa County should use tax dollars to fund a 'purchase of development rights' program to conserve open space."**

	1. (Strongly Agree)	2. (Agree)	3. (Neither Agree nor Disagree)	4. (Disagree)	5. (Strongly Disagree)	Total
01. (Clifton)	3	16	4	8	3	34
	8.8%	47.1%	11.8%	23.5%	8.8%	100.0%
02. (Collbran)	1	0	0	3	1	5
	20.0%	.0%	.0%	60.0%	20.0%	100.0%
03. (DeBeque)	1	0	1	2	0	4
	25.0%	.0%	25.0%	50.0%	.0%	100.0%
04. (Fruita)	3	14	1	12	2	32
	9.4%	43.8%	3.1%	37.5%	6.3%	100.0%
06. (Glade Park)	0	3	1	2	1	7
	.0%	42.9%	14.3%	28.6%	14.3%	100.0%
07. (Grand Junction)	17	87	18	53	16	191
	8.9%	45.5%	9.4%	27.7%	8.4%	100.0%
08. (Loma)	0	2	0	1	1	4
	.0%	50.0%	.0%	25.0%	25.0%	100.0%
09. (Mack)	0	1	0	3	0	4
	.0%	25.0%	.0%	75.0%	.0%	100.0%
10. (Mesa)	1	1	1	1	0	4
	25.0%	25.0%	25.0%	25.0%	.0%	100.0%
11. (Molina)	1	1	0	0	0	2
	50.0%	50.0%	.0%	.0%	.0%	100.0%
12. (Orchard Mesa)	0	6	2	5	0	13
	.0%	46.2%	15.4%	38.5%	.0%	100.0%
13. (Palisade)	3	7	2	7	0	19
	15.8%	36.8%	10.5%	36.8%	.0%	100.0%
14. (Redlands)	4	12	0	5	0	21
	19.0%	57.1%	.0%	23.8%	.0%	100.0%
15. (Whitewater)	0	2	0	0	0	2
	.0%	100.0%	.0%	.0%	.0%	100.0%
16. (Unincorporated)	2	6	1	7	0	16
	12.5%	37.5%	6.3%	43.8%	.0%	100.0%
17. (Other)	0	4	2	1	0	7
	.0%	57.1%	28.6%	14.3%	.0%	100.0%
Total	36	162	33	110	24	365
	9.9%	44.4%	9.0%	30.1%	6.6%	100.0%

**Cross-tabulations by Sex.**

**Table A.8: Crosstabs (insig.) of Sex by "Most serious crime problem in your neighborhood."**

	1 Male	2 Female	Total
01. Theft and burglary	34	37	71
	20.0%	16.2%	17.8%
02. Violent crimes	2	1	3
	1.2%	.4%	.8%
03. Traffic control	19	21	40
	11.2%	9.2%	10.0%
04. Drug abuse	23	35	58
	13.5%	15.3%	14.5%
05. Vandalism	9	19	28
	5.3%	8.3%	7.0%
06. Domestic violence	4	3	7
	2.4%	1.3%	1.8%
07. Code enforcement	7	5	12
	4.1%	2.2%	3.0%
08. There are no serious crime problems in my neighborhood.	69	105	174
	40.6%	45.9%	43.6%
09. Other	3	3	6
	1.8%	1.3%	1.5%
Total	170	229	399
	100.0%	100.0%	100.0%

**Table A.9: Crosstabs (insig.) of Sex by "Confidence in Sheriff's Department in emergency."**

	1 Male	2 Female	Total
1. Very High	37	54	91
	22.3%	24.2%	23.4%
2. High	64	80	144
	38.6%	35.9%	37.0%
3. Neither High nor Low	57	60	117
	34.3%	26.9%	30.1%
4. Low	7	17	24
	4.2%	7.6%	6.2%
5. Very Low	1	12	13
	.6%	5.4%	3.3%
Total	166	223	389
	100.0%	100.0%	100.0%



