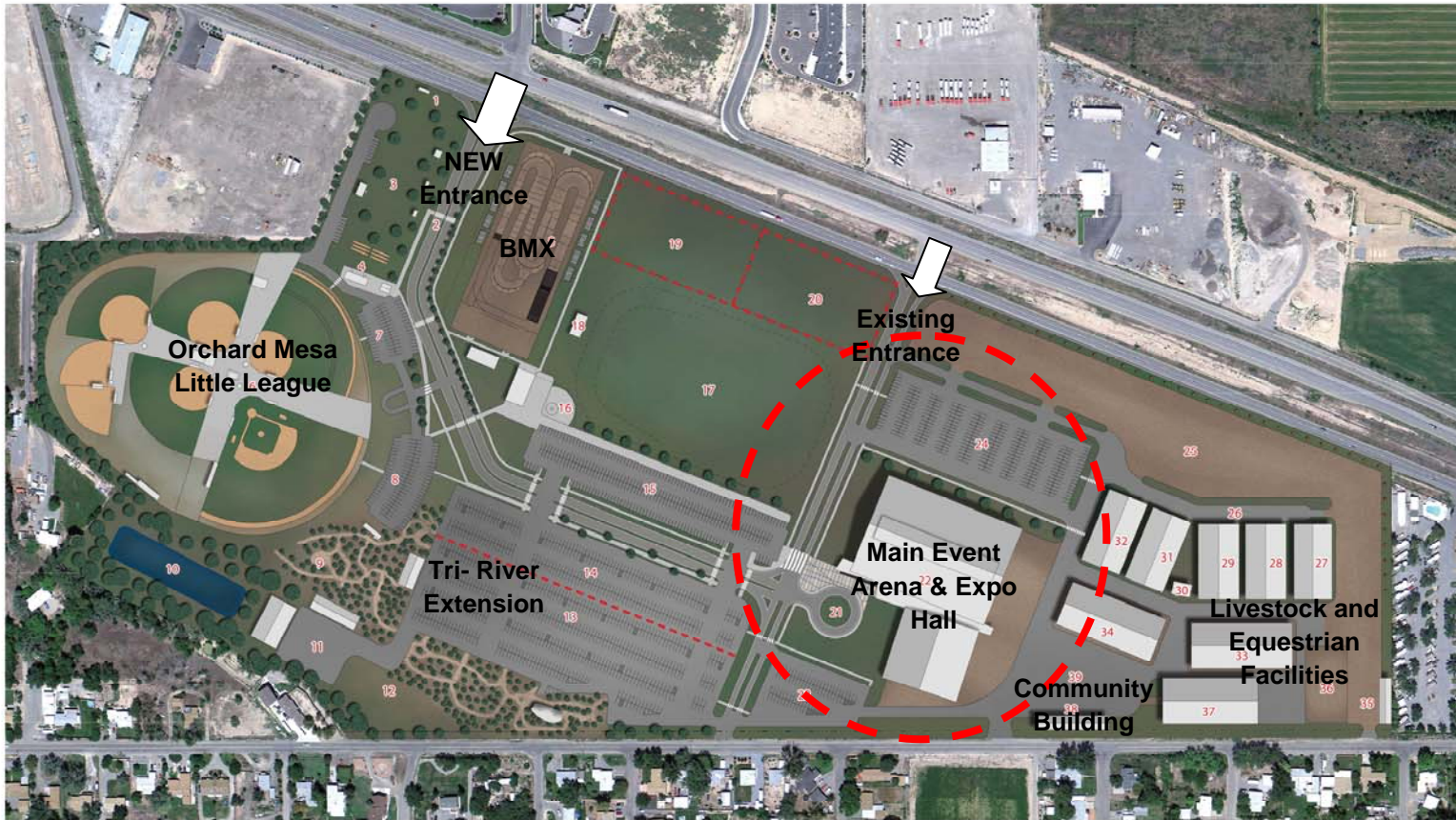




Phase 3



- 1 LED MARQUEE BOARD
- 2 PARK ENTRANCE SIGN
- 3 LION'S PARK
- 4 HORSESHOE PITS
- 5 BMX TRACK
- 6 ORCHARD MESA LITTLE LEAGUE BALLPARK
- 7 NEW BALLPARK PARKING I (62 spaces)
- 8 NEW BALLPARK PARKING II (94 spaces)
- 9 CSU EXTENSION & ARBORETUM
- 10 IRRIGATION POND
- 11 MAINTENANCE YARD
- 12 DOG PARK
- 13 EXISTING PARKING (599 spaces)
- 14 NEW PARKING (220 spaces)
- 15 NEW PARKING (281 spaces)
- 16 VETERAN'S MEMORIAL PARK
- 17 GREENSPACE/MULTI-USE FESTIVAL GROUND
- 18 STAGE
- 19 COMMERCIAL PARCEL A (2.16 ac.)
- 20 COMMERCIAL PARCEL B (2.18 ac.)
- 21 EVENT CENTER DROP OFF
- 22 EVENT CENTER
- 23 EVENT CENTER PARKING (84 spaces)
- 24 NEW PARKING (276 spaces)
- 25 TRAILER PARKING
- 26 LOAD/UNLOAD LANE
- 27 EXISTING BARN (75 stalls)
- 28 NEW BARN I (90 stalls)
- 29 NEW BARN II (90 stalls)
- 30 SHOW OFFICE
- 31 NEW BARN III (90 stalls)
- 32 NEW BARN IV (90 stalls)
- 33 EXISTING COVERED ARENA (120' x 265')
- 34 NEW COVERED ARENA (120' x 265')
- 35 STORAGE BUILDING
- 36 EXISTING OUTDOOR WARM-UP ARENA
- 37 EXISTING LIVESTOCK PAVILION
- 38 EXISTING COMMUNITY BUILDING
- 39 RV SPACES (78 spaces)

POPULOUS™



Phase 3 Development: Center of Property

Includes a multi-use Main Event Arena: 5,000 seats, dirt floor for livestock and motorsports shows, which can be packed and covered to host concerts and family shows. This facility will replace the current grandstands complex. Also included in this phase is a 30,000 SF Expo Hall with concrete floors and roll-up doors, as well as additional stall opportunities. Development anticipated to occur if/when funding strategies are secured.