

**MESA
COUNTY**

2014

Proposed Budget

October 14, 2013

Today's Agenda

- Budget Process/Guidance
- Revenues
- Expenditures
- Fund Balances
- Capital Investment
- Alignment with Strategic Plan
- Next Steps

Budget Process

- June Strategic Plan
- July Budget Tool to Offices/Departments
- Aug Budgets Due
- Aug/Sept Meetings with Offices/Departments
- Sept Admin Develops, BOCC Reviews Proposed Budget
- **Oct 14 Admin Presents Proposed Budget**
- Oct/Nov BOCC Hears Appeals
- Nov BOCC Finalizes Budget
- Dec 9 2014 Budget Adopted

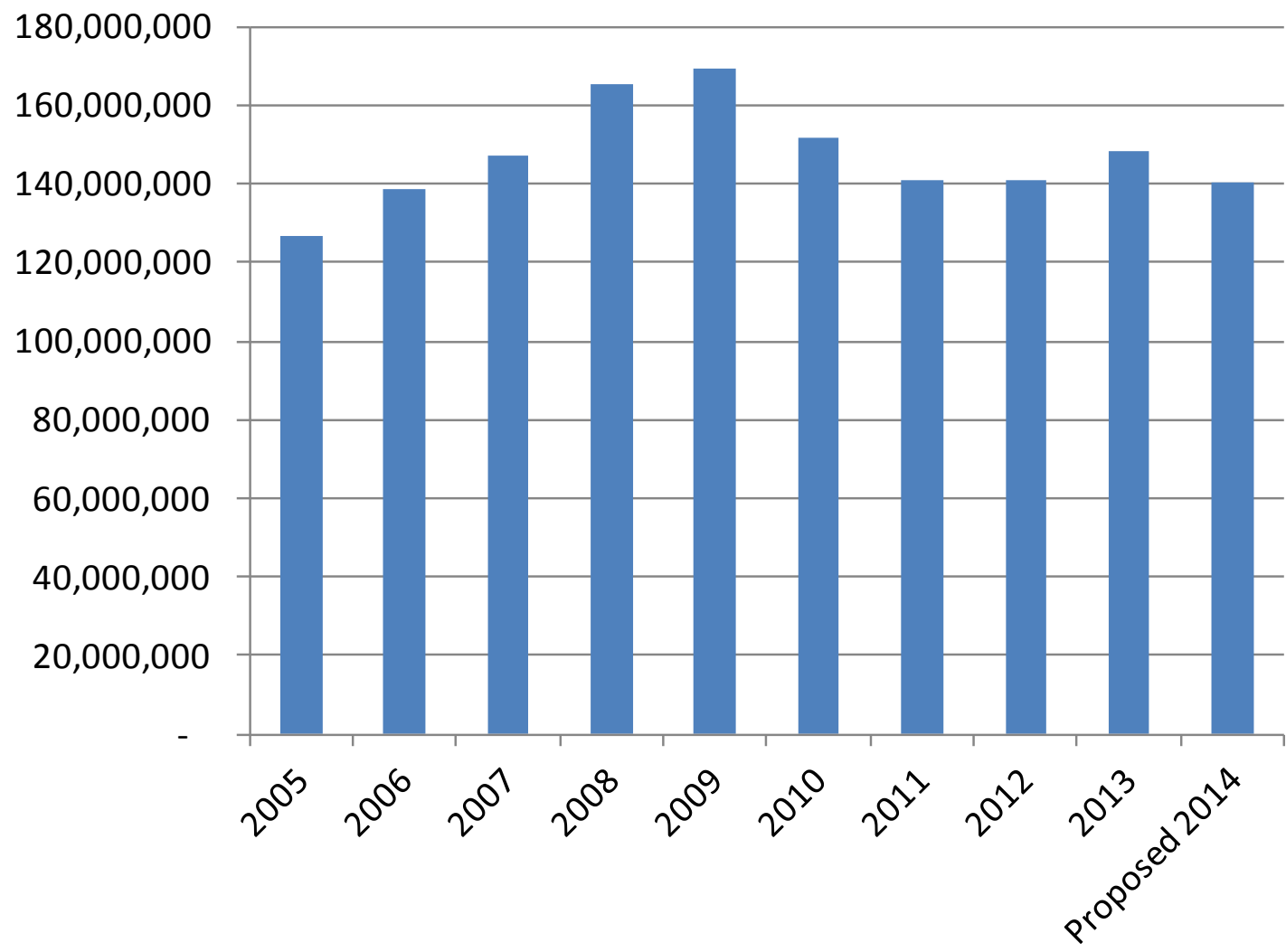
Budget Drivers

- Strategic Plan
- Fund Balance Direction
- Office/Department Priorities
- Projected Revenues
- Citizen Survey

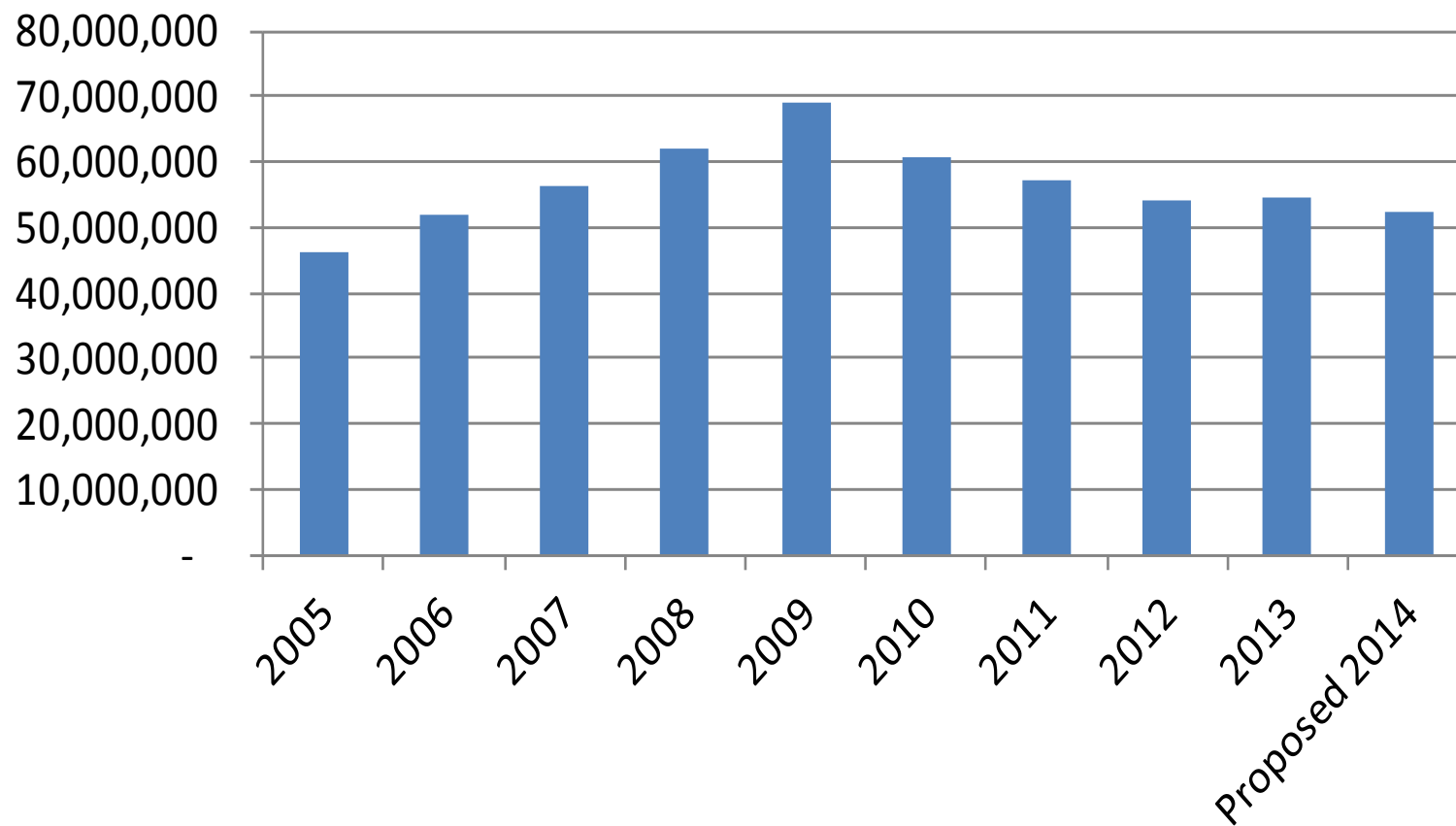
Revenue

- Total County Revenue is Projected to be \$140,249,530
 - 2013 Adopted Budget \$148,128,396
- General Fund Revenue is Projected to be \$52,495,082
 - 2013 Adopted Budget \$54,637,180

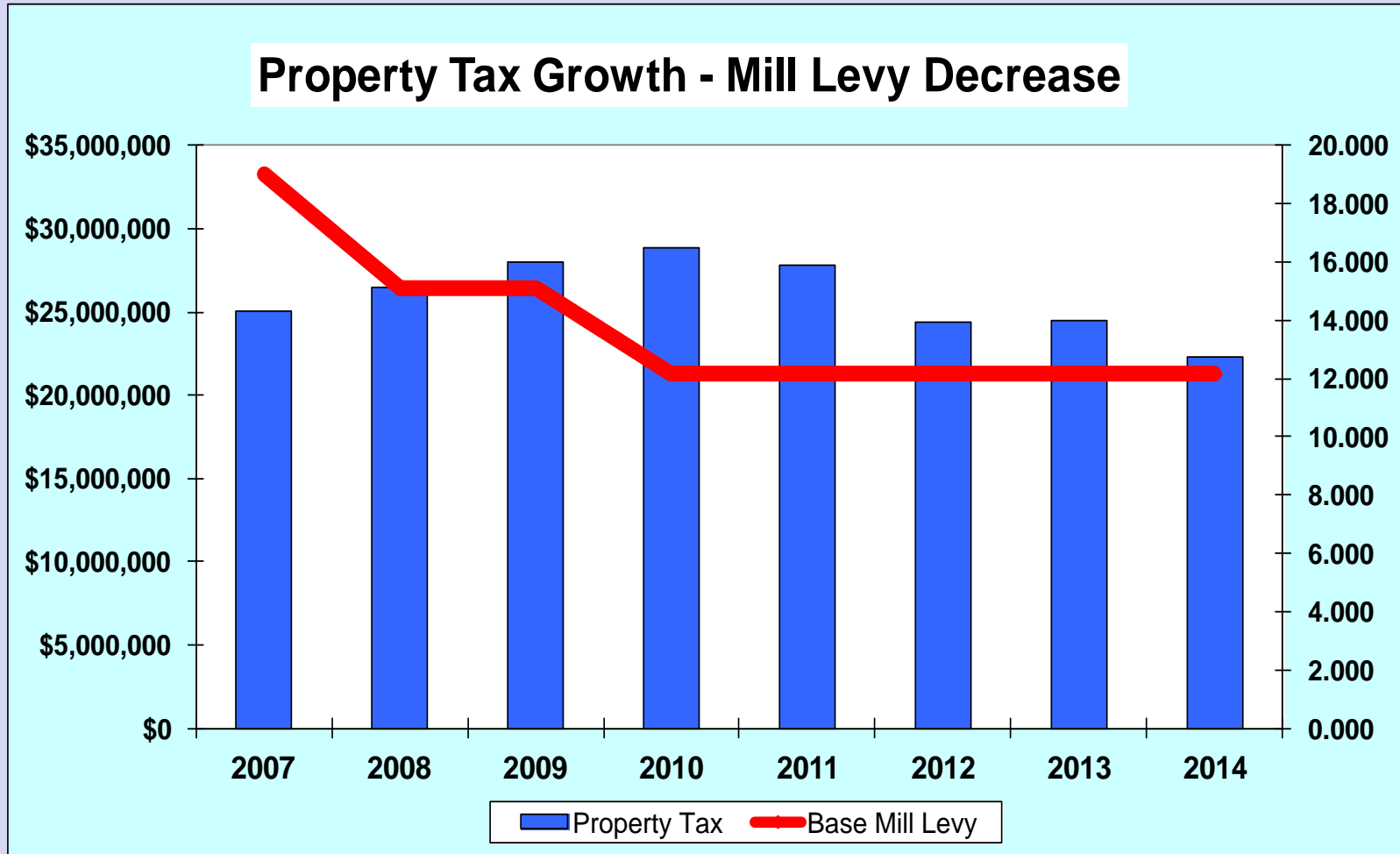
Adopted Revenue Budgets



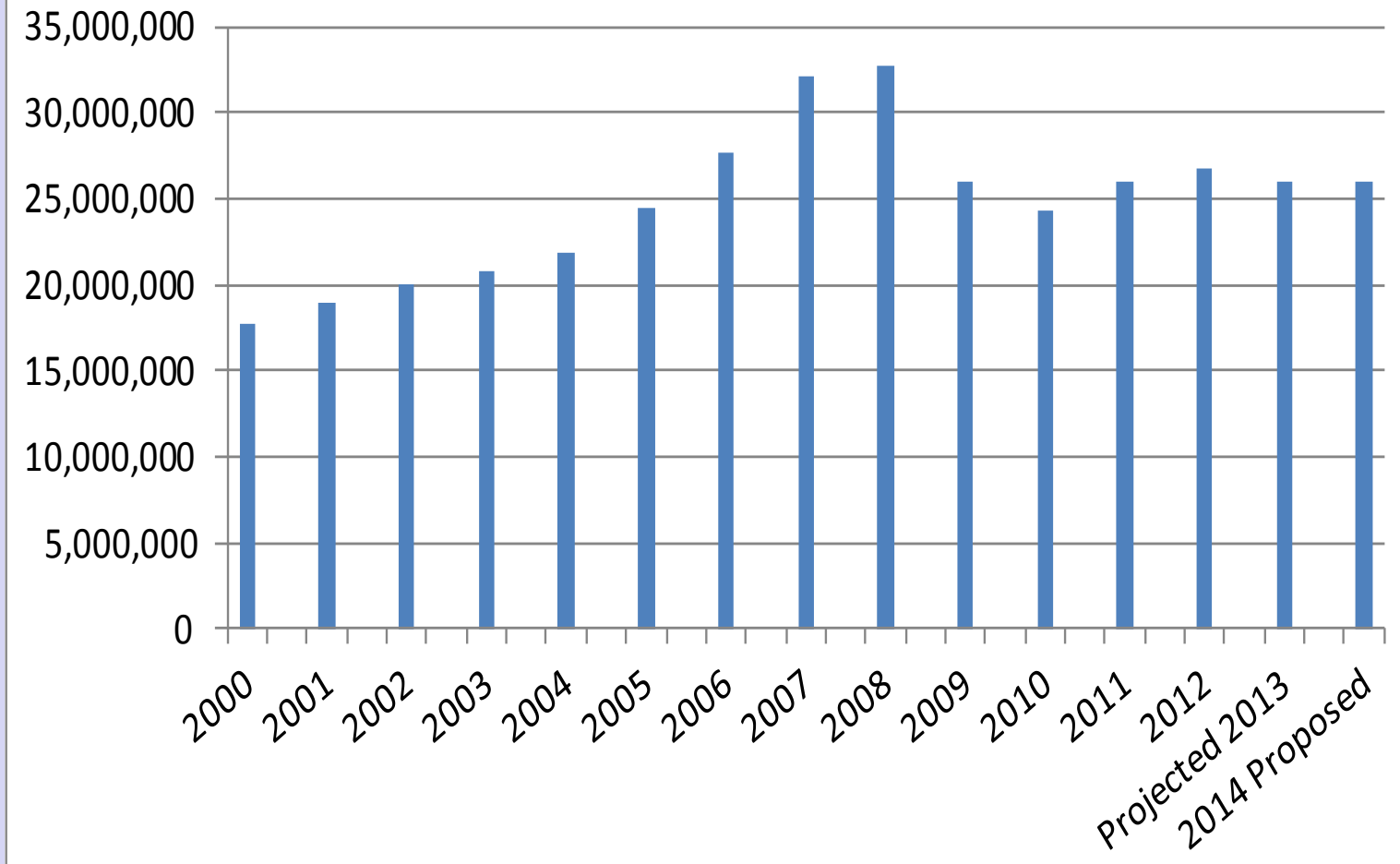
General Fund Revenue Budgets



Property Tax



Total County Sales Tax

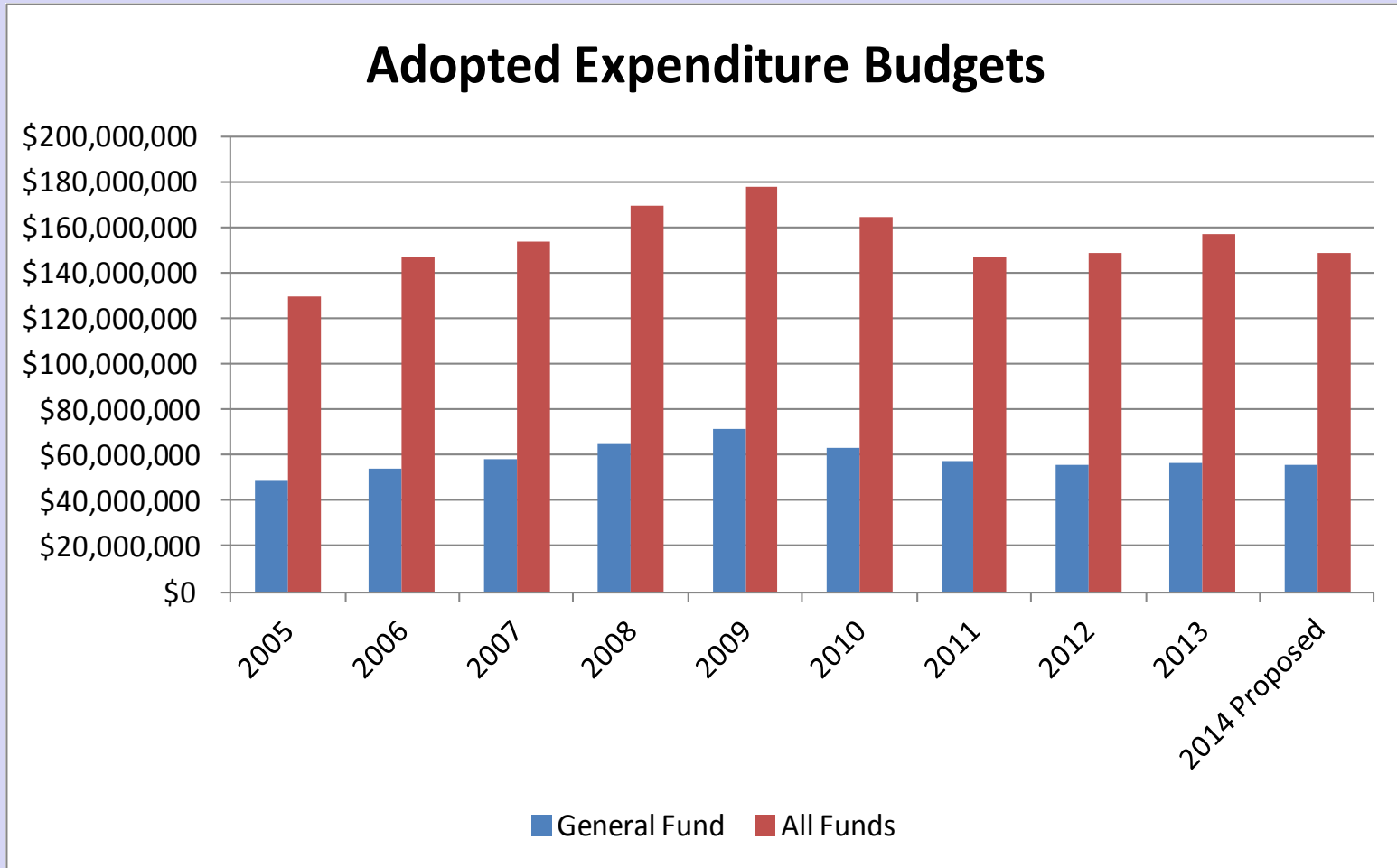


Expenditures

- Overall budget: \$148,549,327
 - 2013 \$157,357,396

- General Fund Budget \$55,461,282
 - 2013 \$56,178,745

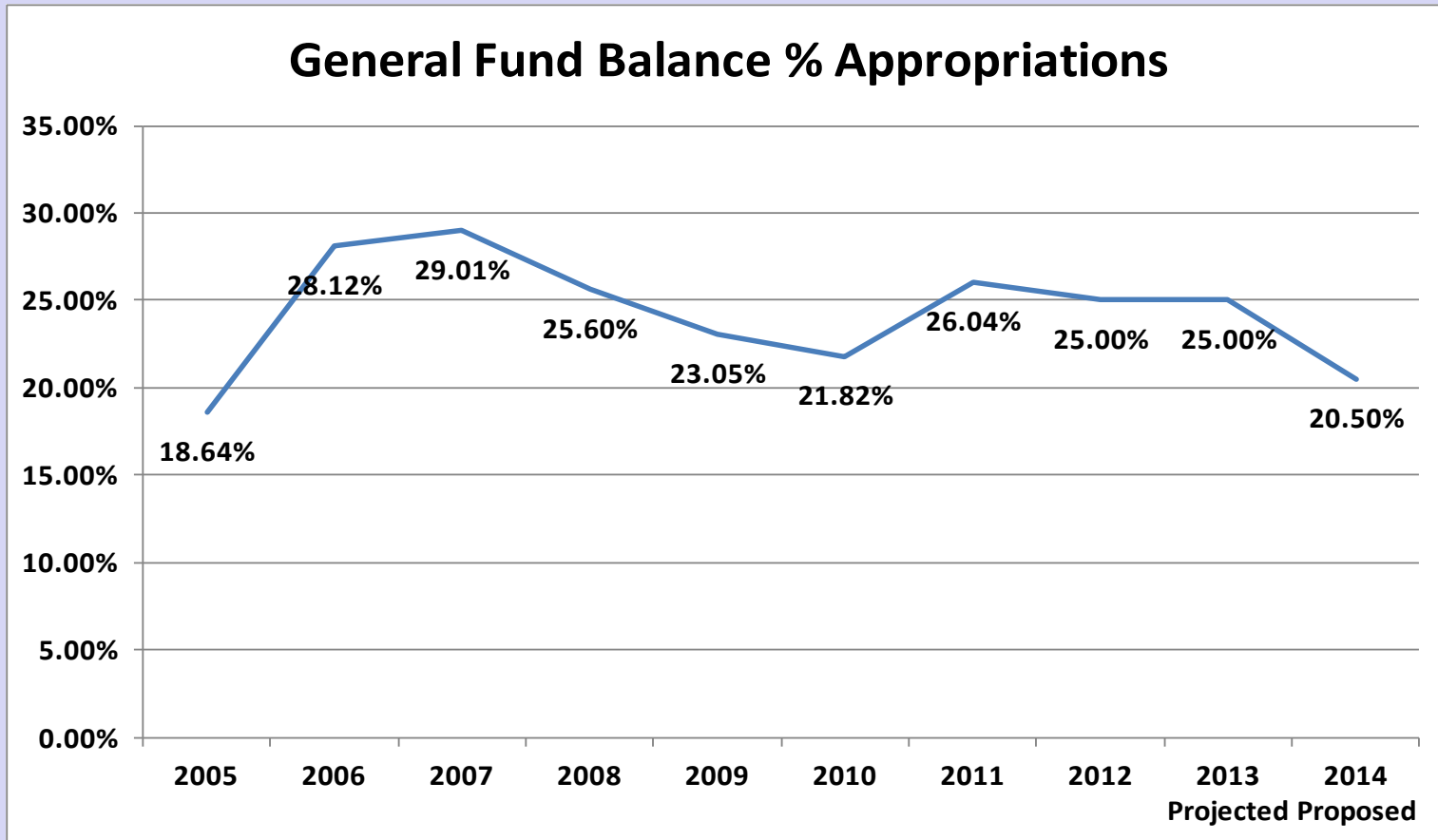
Expenditure History



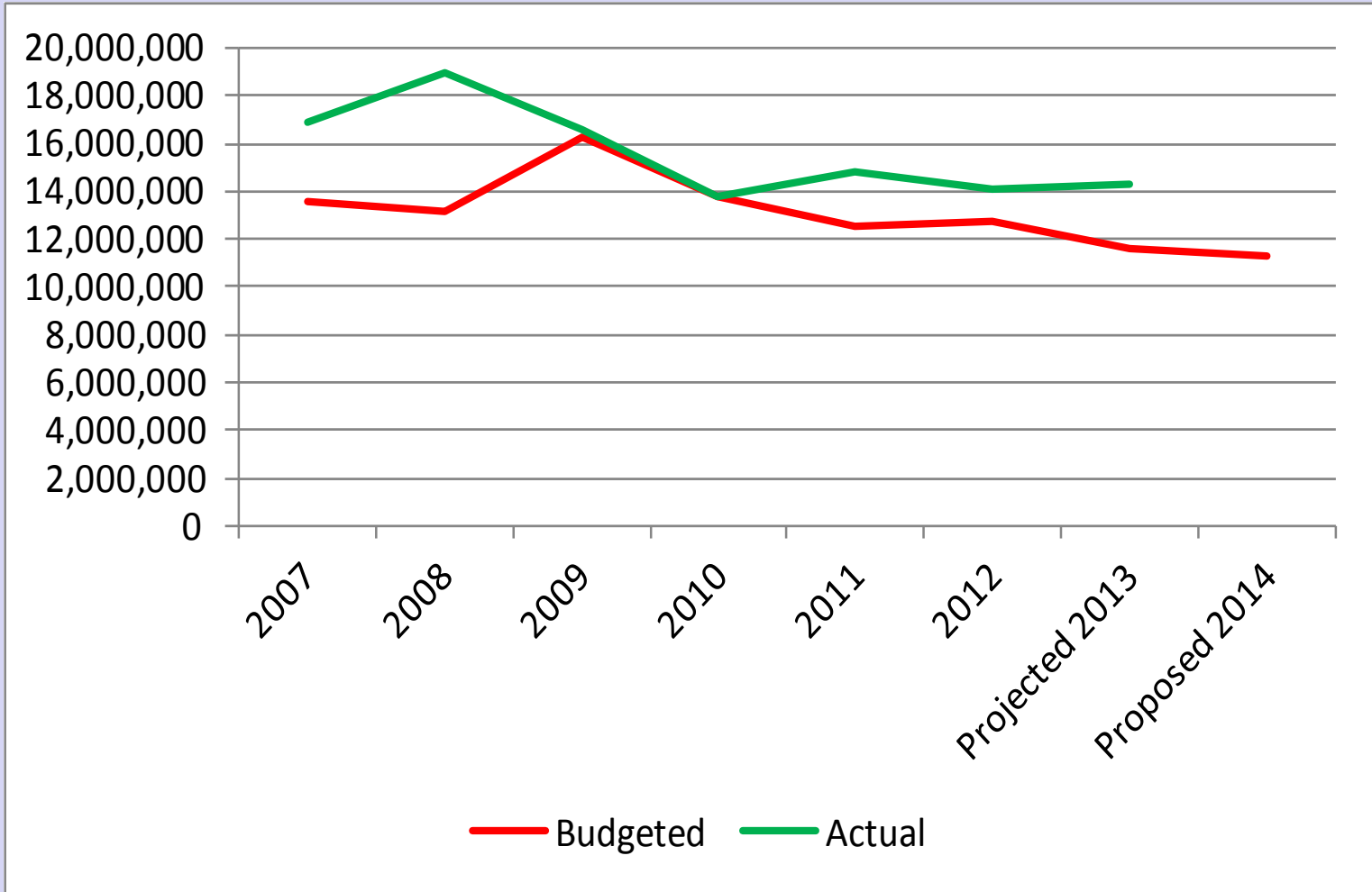
Fund Balance

	2014 Projected Beginning Fund Balance	Revenues & Transfers In	Appropriations & Transfers Out	2014 Budgeted Ending Fund Balance	% of Fund Balance to Appropriations
Total County	\$36,905,482	\$140,249,530	148,549,327	\$28,605,686	19.26%
General Fund	\$14,334,719	\$52,495,082	\$55,461,282	\$11,368,518	20.50%

General Fund Balance



Budget to Actual Comparison



- Capital Investment
 - Revenue \$28,572,324
 - 2013 \$35,223,945
 - Expenditures \$30,331,075
 - 2013 \$39,846,264
 - Economic Development Opportunities

- Transportation
 - Bridges \$4.4 million
 - Road Safety/Improvement \$12.7 million
- Technology Investment
 - Election Equipment \$400,000
 - Sheriff Evidence Software \$100,000
 - Criminal Justice Treatment Software \$300,000
- Facilities
 - Fairgrounds \$1.6 million
 - Support for Colorado Mesa University \$300,000
 - Riverfront Trail \$4.8 million
 - GVT West Transfer Facility \$2.5 million

Organization Priorities

- Health insurance
- Compensation/Benefits
- Position Requests (FTE's)

Strategic Plan

- **Success Statements:**
 - Positive sense of community safety
 - Efficient delivery of services
 - Healthy and conservative fund balance
 - Infrastructure Investments
 - Economic prosperity
 - Highly motivated employees that feel valued



Thank You