

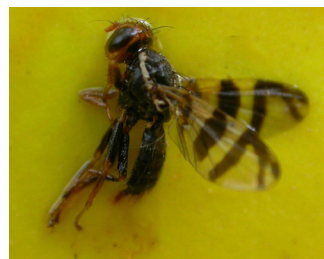


## Western Cherry Fruit Fly (*Rhagoletis indifferens*)

Diane Alston, Entomologist • Marion Murray, IPM Project Leader

### Do You Know?

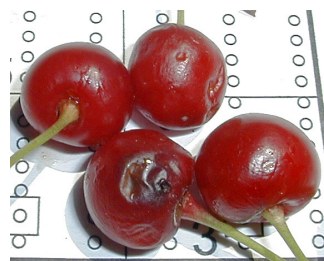
- Western cherry fruit fly is the primary insect pest of sweet and tart cherries in Utah.
- Damage occurs from the larva developing inside fruit.
- Females lay eggs under the skin of fruit, so target adult flies for control.
- Insecticides are currently the most effective control method.
- Attract-and-kill (bait plus insecticide) can be effective for control in commercial and home cherry trees.
- Use of ground barriers (mulch, fabrics) can reduce pupation and fly emergence.
- Post-harvest sanitation can reduce populations.



**Figure 1.** Adult fly caught on trap.



**Figure 2.** Larvae feeding inside a cherry fruit.<sup>1</sup>



**Figure 3.** Damaged cherries with larval exit holes.



**Figure 4.** Cherry fruits are not susceptible to attack until they have a blush of salmon color.<sup>1</sup>

The western cherry fruit fly (Order Diptera, Family Tephritidae) is the most important pest of sweet and tart cherries in Utah. Once the skin of fruits becomes soft enough to penetrate, adult females (Fig. 1) insert eggs with their ovipositor, and larvae develop inside the fruits (Fig. 2). The result is "wormy" fruit that is unmarketable. It is difficult to determine whether a fruit is infested until the larva exits through a hole that it chews (Fig. 3) or the fruit is cut open to reveal the larva inside. For processed cherries, detection of one larva by the processor can result in rejection of the entire crop from that orchard and/or farm. Therefore, the best management strategy is to prevent fruit infestation.

Adult flies will migrate only short distances (< 40 m) if host fruit is available. This causes infestations to be spotty in a region; however, once established in an orchard, the western cherry fruit fly can spread rapidly and require annual control. Protective insecticide sprays are currently the major tactic for preventing infestation. An "attract-and-kill" technology where adult flies are enticed to feed on a sticky bait droplet containing an ultra low concentration of insecticide, has proven effective in Utah orchards.

There is one generation per year; however, adults can emerge from the soil over a period of 3 months or more. Cherry fruits are susceptible to infestation from when they first ripen to a salmon-blush color (Fig. 4) until they become too soft or fall from the tree.

### HOSTS

Sweet, tart, and wild species of cherries

### LIFE HISTORY

#### Pupa – Overwintering Stage

- **Size:** about  $\frac{3}{16}$  inch (5 mm) long
- **Color:** light to dark brown and shaped like a large grain of wheat
- **Where:** overwinters in the soil of the orchard floor, 1 - 4 inches (2.5 - 10 cm) deep
- Rate of pupal development and adult emergence affected by soil temperature and moisture

#### Adult – Monitoring Stage

- **Size:** about  $\frac{1}{5}$  inch (5 mm) long
- **Color:** black body with white bands on abdomen (posterior body region); wings are transparent with a distinctive pattern of dark bands (Figs. 1 and 7)

- **When:** adults begin emerging from soil in late May to early June (Fig. 5 and Table 1) depending on soil temperature and moisture, and continue to emerge throughout the summer and into early fall
- After emerging, females require about 5 - 7 days (190 degree-days) to become sexually mature, after which they can begin laying eggs
- Females lay eggs under the skin of fruit without leaving visible marks, over a period of about 30 days

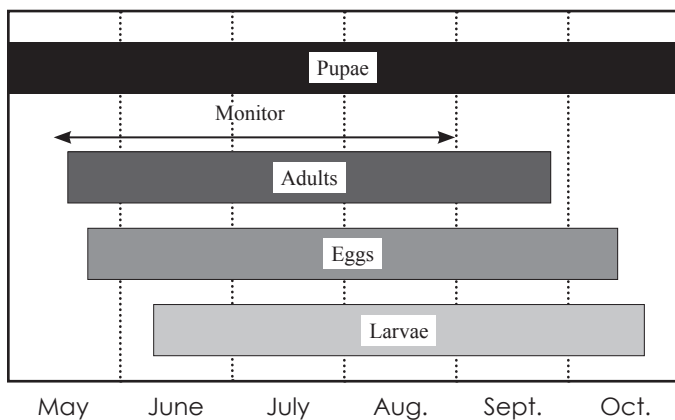
## Egg

- **Size:** about  $\frac{1}{30}$  inch (0.8 mm) long
- **Color and shape:** yellowish and elongated with a stalk at one end
- **Where:** deposited beneath the skin of cherry fruits
- Eggs hatch in 5 - 8 days

## Larva – Damaging Stage

- **Size:** mature larvae are about  $\frac{5}{16}$  inch (8 mm) long
- **Color and shape:** creamy white, legless maggot; tapered at the head and rounded at the tail (Fig. 2)
- **Where:** lives and feeds in the fruit
- After approximately 14 - 21 days, full-grown larvae exit from the fruit, drop to the ground, burrow into the soil, and pupate

**Figure 5.** Life history of western cherry fruit fly. There is one generation per year.



## HOST INJURY

Larvae feed within the fruit on the flesh, rendering the fruit unmarketable (Fig. 2). There is no noticeable evidence on the outside of a fruit indicating infestation until after larvae emerge through exit holes (Fig. 3). Large populations can infest a high percentage of the fruit on a tree. Peak emergence of adults and infestation of fruit occurs from mid-June to mid-July.

## TIMING CONTROL

Insecticide treatments should be timed to prevent adult mating and/or female fruit flies from laying eggs in

developing fruit. There are three methods to determine proper timing of sprays. Method 1 should be used in combination with Methods 2 or 3.

## Method 1: Fruit Maturity

Cherry fruits are not susceptible to egg-laying by adult females until they ripen to a salmon-blush in color (Fig. 4). Green fruits will not be attacked. Consider the maturity of the ripest fruit in an orchard, not the average.

## Method 2: Adult Trapping

Adult flies do not use sexual pheromones, but are attracted to certain colors and odors. Yellow sticky panel traps (Pherocon AM®) with an external bait of ammonium carbonate (AC) are a moderately effective monitoring tool (Fig. 6); unbaited traps should not be used. Place traps in cherry orchards before the first fly is expected [750-800 degree-days ( $DD_{41}$ )], or by mid-May (Tables 1 and 2). Apply the first insecticide treatment 5 - 7 days (190 DD) after first catch (females require 5 - 7 days for ovaries to mature after emergence).



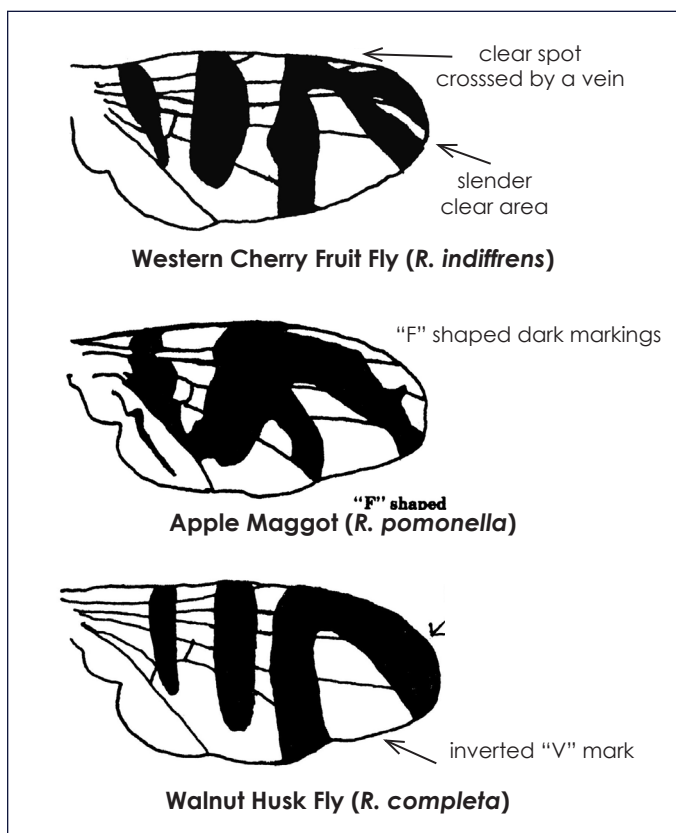
**Figure 6.** Yellow sticky trap with external bait of ammonium carbonate.

## Trap Placement and Servicing

- Place AC-baited Pherocon AM® traps on the southern side of trees (flies emerge first and are more active on the warmer side of trees).
- Place traps at least 6 ft high, preferably in the upper  $\frac{1}{3}$  of the tree canopy.
- Remove fruit, leaves, and twigs within 6 inches of the trap.
- A minimum of two traps should be placed in each orchard. Research conducted in Utah commercial cherry orchards  $\geq 10$  acres in size has shown that one to two traps per acre catches significantly more flies than four traps per orchard. Differences in fly activity on orchard borders versus interiors can be determined by placing traps in representative locations. Suspected "hot spots" within an orchard should be monitored separately.
- Maintain and check traps weekly throughout the fruit development period. Change traps every 3 - 4 weeks or when they become covered with debris.
- Refill or replace AC bait containers as needed.
- Keep a record of trap catches for each location within an orchard and for each orchard. This information can be used to determine first fly emergence, timing of first cover spray, relative fly activity across orchards, and help in evaluating success of your fruit fly management program.

- More than one species of fruit fly may be caught on traps. Inspect the banding pattern on wings to determine the species (Fig. 7).

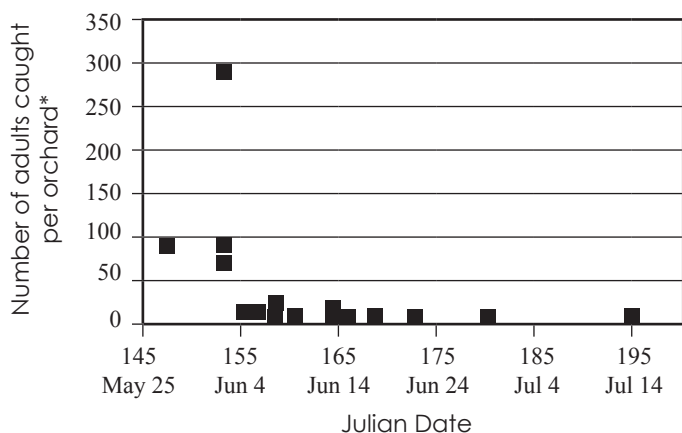
**Figure 7.** Illustration of fruit fly wing banding patterns.



### Method 3: Degree-Day Model

Use 1060 DD as a guideline (41° F lower threshold for development, Tables 2 and 3) to initiate cover sprays if you don't have fly trapping information. This timing corresponds to 3 percent fly emergence and 1 percent of females with mature ovaries. In order to use a DD

**Figure 8.** Relationship between fruit fly density and date of first adult emergence.



\*Total adults caught from first catch to ~ July 31; missing data point: JD 151 (May 31), 1600 adults

**Table 1.** Date of first catch of western cherry fruit fly in northern Utah from 1998-2007\*.

Year	Date of first catch
1998	June 2
1999	May 30
2000	May 25
2001	May 26
2002	May 27
2003	May 26
2004	May 16
2005	May 22
2006	May 22
2007	May 12

\*Flies were monitored with yellow sticky traps (Pherocon AM®) plus external ammonium carbonate bait.

**Table 2.** Major events in western cherry fruit fly management. Timing of events is based on degree-day accumulations\* and first activity of adults.

Degree-Days (DD)	Management Event
750-800	Place traps in orchards
900-950	First adult flies expected on traps; Treat 5-7 days or 190 DD after first fly is caught if cherries have developed a salmon-colored blush; otherwise wait for fruit to turn color
1060	3% of flies emerged, 1% of flies sexually mature; If you don't have trap catch information, use 1060 DD and fruit maturity guidelines (above) to time the first spray. Re-apply cover sprays based on insecticide protection interval and anticipated harvest date of crop.

\*The western cherry fruit fly model is based on a 41° F lower threshold and no upper threshold for development. Begin accumulating DD after temperatures exceed 41° F, on Jan. 1.

method, daily air temperature data must be available. Table 3 is a look-up table that can be used if you have access to maximum and minimum temperatures in or near your orchards. The Utah Integrated Pest Management (IPM) Project provides DD information for representative orchards in northern Utah on their Web page ([www.utahpests.usu.edu/ipm/html/advisories/treefruit/](http://www.utahpests.usu.edu/ipm/html/advisories/treefruit/)).

Also consider the history of fruit fly populations and fruit infestation in an orchard to help guide initiation of insecticide sprays. First adult emergence will tend to be earlier in orchards with higher fruit fly densities (Fig. 8).

**Table 3.** Degree Day Look-Up for Western Cherry Fruit Fly\*

Lower threshold: 41° F      Upper threshold: None

		Minimum Temperature																						
		15	18	21	24	27	30	33	36	39	42	45	48	51	54	57	60	63	66	69	72	75	78	81
Maximum Temperature	40	0	0	0	0	0	0	0	0	0														
	43	0	0	0	0	0	0	0	0	1	2													
	46	1	1	1	1	1	1	1	2	2	3	5												
	49	2	2	2	2	2	2	3	3	3	5	6	8											
	52	3	3	3	3	3	4	4	4	5	6	8	9	11										
	55	4	4	4	4	4	5	5	6	6	8	9	11	12	14									
	58	5	5	5	5	6	6	6	7	8	9	11	12	14	15	17								
	61	6	6	6	7	7	7	8	8	9	11	12	14	15	17	18	20							
	64	7	7	8	8	8	9	9	10	11	12	14	15	17	18	20	21	23						
	67	8	9	9	9	10	10	11	11	12	14	15	17	18	20	21	23	24	26					
	70	10	10	10	11	11	12	12	13	14	15	17	18	20	21	23	24	26	27	29				
	73	11	11	11	12	12	13	14	14	15	17	18	20	21	23	24	26	27	29	30	32			
	76	12	12	13	13	14	14	15	16	17	18	20	21	23	24	26	27	29	30	32	33	35		
	79	13	14	14	15	15	16	16	17	18	20	21	23	24	26	27	29	30	32	33	35	36	38	
	82	15	15	16	16	17	17	18	19	20	21	23	24	26	27	29	30	32	33	35	36	38	39	41
	85	16	16	17	17	18	19	19	20	21	23	24	26	27	29	30	32	33	35	36	38	39	41	41
88	17	18	18	19	19	20	21	22	23	24	26	27	29	30	32	33	35	36	38	39	41	42	44	
91	19	19	20	20	21	22	22	23	24	26	27	29	30	32	33	35	36	38	39	41	42	44	45	
94	20	21	21	22	22	23	24	25	26	27	29	30	32	33	35	36	38	39	41	42	44	45	47	
97	21	22	22	23	24	24	25	26	27	29	30	32	33	35	36	38	39	41	42	44	45	47	48	
100	23	23	24	24	25	26	27	28	29	30	32	33	35	36	38	39	41	42	44	45	47	48	50	
103	24	25	25	26	27	27	28	29	30	32	33	35	36	38	39	41	42	44	45	47	48	50	51	
106	26	26	27	27	28	29	30	31	32	33	35	36	38	39	41	42	44	45	47	48	50	51	53	
109	27	28	28	29	29	30	31	32	33	35	36	38	39	41	42	44	45	47	48	50	51	53	54	
112	28	29	30	30	31	32	33	34	35	36	38	39	41	42	44	45	47	48	50	51	53	54	56	
115	30	30	31	32	32	33	34	35	36	38	39	41	42	44	45	47	48	50	51	53	54	56	57	

To find the total degree days for a day, locate the low and high temperatures and follow the rows to where they intersect. For temperatures between those listed, use the nearest shown.

\*Adapted from: Beers, E.H, J. F. Brunner, M. J. Willett, and G. M. Warner. 1993. **Orchard Pest Management: A Resource Book for the Pacific Northwest**. Good Fruit Grower. 276 pp.



## MANAGEMENT

### Insecticides

Insecticide sprays targeting the adult are the primary tactic for controlling this pest. Larvae of the fruit fly develop within the fruit where they are protected from most insecticides. Recent research on penetration of insecticides into fruit has shown that some of the neonicotinoid insecticides (e.g., Provado) move through the skin and can kill insect eggs and larvae within the fruit. The main target for control is still prevention of females laying eggs in fruit.

The zero-tolerance level of fruit flies in processed cherries has made perfect control a necessity. Home growers can help the commercial cherry industry by maintaining fruit fly control in backyard orchards. Once control treatments begin based on timing information described above, maintain protection of fruit through harvest. Reapply insecticides based on the protection interval stated on the label. It is best to rotate the type of insecticide applied between applications to reduce development of resistance and negative effects on beneficial insects and mites. For example, insecticides such as carbaryl, malathion, and the synthetic pyrethroids are especially toxic to predatory mites.

### Recommended Insecticides\*

For home and commercial orchards:

- spinosad (GF-120, Success<sup>H</sup>, Entrust<sup>H</sup>) – reapply every 7 days
- carbaryl (Sevin<sup>H</sup>) – reapply every 7 days
- malathion (Malathion<sup>H</sup>) – best when used just before harvest as it lasts approximately 3 days
- esfenvalerate (Asana<sup>H</sup>, Ortho<sup>H</sup>)
- permethrin (Ambush<sup>R</sup>, Pounce<sup>R</sup>, Ortho<sup>H</sup>)

For commercial orchards only:

- imidacloprid (Provado) – reapply every 14 days
- azinphosmethyl (Guthion<sup>R</sup>) – reapply every 14 days (scheduled for phase-out by 2012 by the U.S. Environmental Protection Agency)
- phosmet (Imidan) – reapply every 14 days; do not use on sweet cherry
- diazinon (Diazinon) – reapply every 10-14 days
- synthetic pyrethroids – reapply every 7-10 days
  - cyfluthrin (Baythroid<sup>R</sup>)
  - lambda-cyhalothrin (Warrior<sup>R</sup>)

\*All brand names are registered trademarks. Examples of brands may not be all-inclusive, but are meant to provide examples of insecticides registered on cherry trees in Utah. The availability of insecticides is changing rapidly. Always check the label for registered uses, application and safety information, and protection and pre-harvest intervals.

<sup>R</sup> Restricted use products that require an applicator license.

<sup>H</sup>Insecticide products that may be available for use on home fruit trees.

No insecticides are currently registered for soil application for control of cherry fruit fly. Preliminary research has shown some efficacy of entomopathogenic nematodes against larvae in the soil.

### Attract-and-Kill Technology

GF-120 is a mixture of an adult attractant and an ultra low concentration of spinosad insecticide. In commercial orchards it is applied with an ATV-mounted, electric-pump sprayer (Fig. 9). In home cherry trees, it can be applied with a hand-pump sprayer. Full coverage of foliage and fruit is not required as adults are enticed to feed on small droplets of sticky bait and insecticide. Research in Utah orchards has shown it to be as effective as most traditional insecticides where populations are low. It is not rain-fast and must be reapplied at least every 7 days.

It is critical to keep an adequate number of bait-insecticide droplets available to kill adults soon after they emerge and before they mate and/or females lay eggs. Currently it is only sold in larger volumes; larger than is practical for most home orchards.



**Figure 9.** Application of GF-120 attract-and-kill product with a 4-wheeler-mounted sprayer.<sup>1</sup>

## Cultural Controls

### Ground Cover and Mulches

Ground covers and mulches around the base of trees can prevent larvae from burrowing into the soil to complete development into the pupal stage. Successful vegetation covers include grasses and other plants with extensive, dense root systems (e.g., clover) that physically impede fruit fly larvae. Landscape fabric can prevent larval burrowing and emergence of adults from pupae in the soil (Fig. 10). Mulches of other dense materials may also interfere with their life cycle.

## Sanitation

Maintaining a “clean” orchard wherein the fruit fly population is kept at low levels from one year to the next is important because high populations are more difficult to control, even with insecticides. In years when the crop is not harvested or not all fruit is removed from trees, fruit fly populations can increase and cause greater pest pressure the following year. Therefore, it is important to remove dropped fruit from the orchard floor as it may contain larvae. In addition, remove any nearby abandoned or wild cherry trees to prevent them from serving as unmanaged hosts that contribute to the local fruit fly population.

## Biological Control

There are some natural enemies that will attack fruit fly life stages, such as parasitic wasps that lay eggs on larvae within fruit, but control has not been shown to be significant. Birds and rodents take a larger toll on fruit fly larvae, but they generally also consume the fruit and so



**Figure 10.** Landscape fabric under the trees can prevent larvae from burrowing into the soil to pupate.

are not considered beneficial. Chicken and other fowl have been shown to eat fruit fly larvae and pupae in the soil and may provide some benefit.

---

<sup>1</sup>Images courtesy of Washington State University Extension

**Precautionary Statement:** All pesticides have benefits and risks, however following the label will maximize the benefits and reduce risks. Pay attention to the directions for use and follow precautionary statements. Pesticide labels are considered legal documents containing instructions and limitations. Inconsistent use of the product or disregarding the label is a violation of both federal and state laws. The pesticide applicator is legally responsible for proper use.

Utah State University is committed to providing an environment free from harassment and other forms of illegal discrimination based on race, color, religion, sex, national origin, age (40 and older), disability, and veteran's status. USU's policy also prohibits discrimination on the basis of sexual orientation in employment and academic related practices and decisions. USU employees and students cannot, because of race, color, religion, sex, national origin, age, disability, or veteran's status, refuse to hire; discharge; promote; demote; terminate; discriminate in compensation; or discriminate regarding terms, privileges, or conditions of employment, against any person otherwise qualified. Employees and students also cannot discriminate in the classroom, residence halls, or in on/off campus, USU-sponsored events and activities. This publication is issued in furtherance of Cooperative Extension work. Acts of May 8 and June 30, 1914, in cooperation with the U.S. Department of Agriculture, Vice President for Extension and Agriculture, Utah State University.